

CERTIFICATE OF LOCATION OF GOVERNMENT CORNER

County of Anoka State of Minnesota

EAST QTR. Corner of Sec. 1 Township 31 Range 22

I hereby certify that on the 15 day of AUGUST, 1979, I found the described corner which was evidenced by WASHINGTON COUNTY MONUMENT

and I further certify that to perpetuate the location of said corner, I did, at the exact location thereof, place a permanent marker consisting of WASHINGTON COUNTY CAST IRON MONUMENT

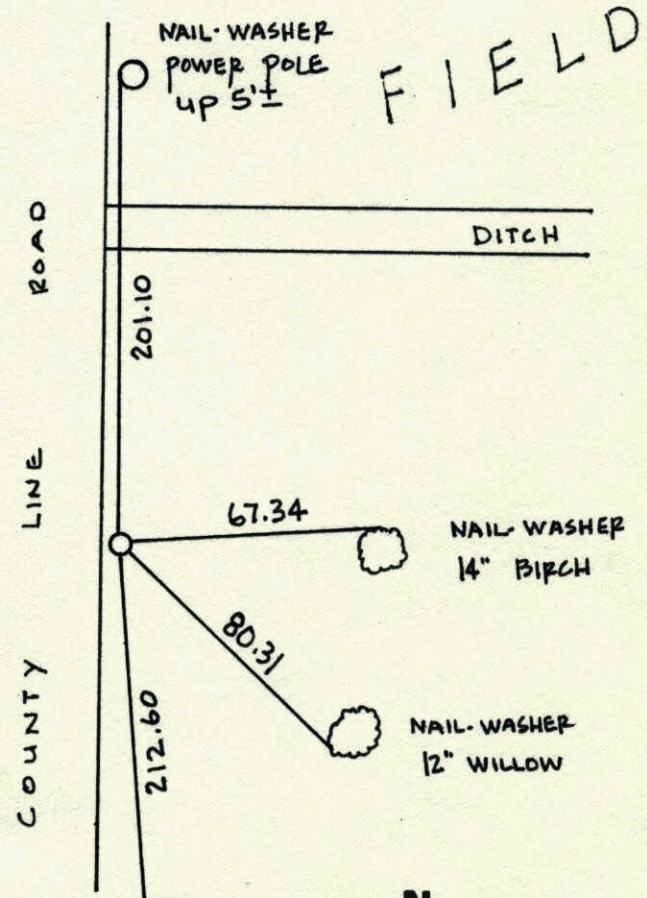
which reference or witness monuments are located in the manner following:

N.A.D.	1983	Co-ordinates
County Project	Co-ordinates	
Northing	<u>161466.5995</u>	
Easting	<u>563618.4567</u>	
State Plane Co-ordinates		
Y	_____	
X	_____	
Date _____		

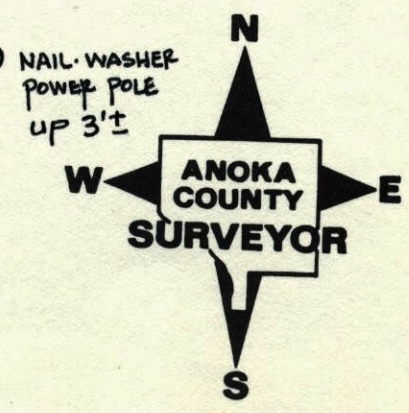
#6

FIELD

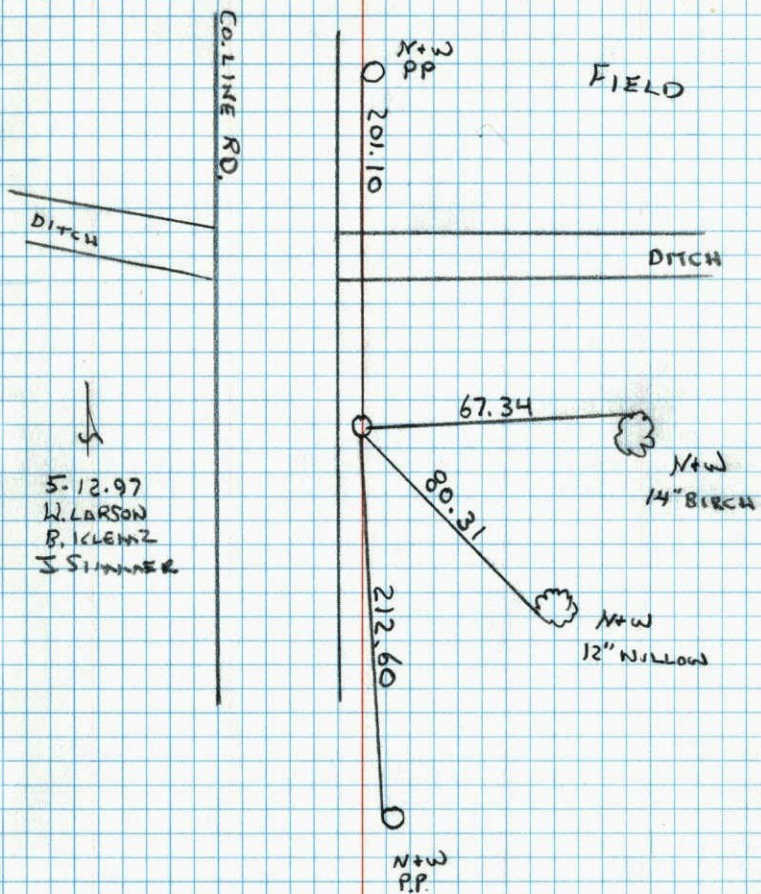
#6 { 161466.5995
563618.4567



Revised date	Revised date	Revised date
<u>3-16-87</u>		
<u>10-17-96</u>		
<u>5-12-97</u>		
<u>2-25-98</u>		



EAST 1/4 COR. SECTION 1 T31 R22
 RETIED WASHINGTON CO. MONUMENT

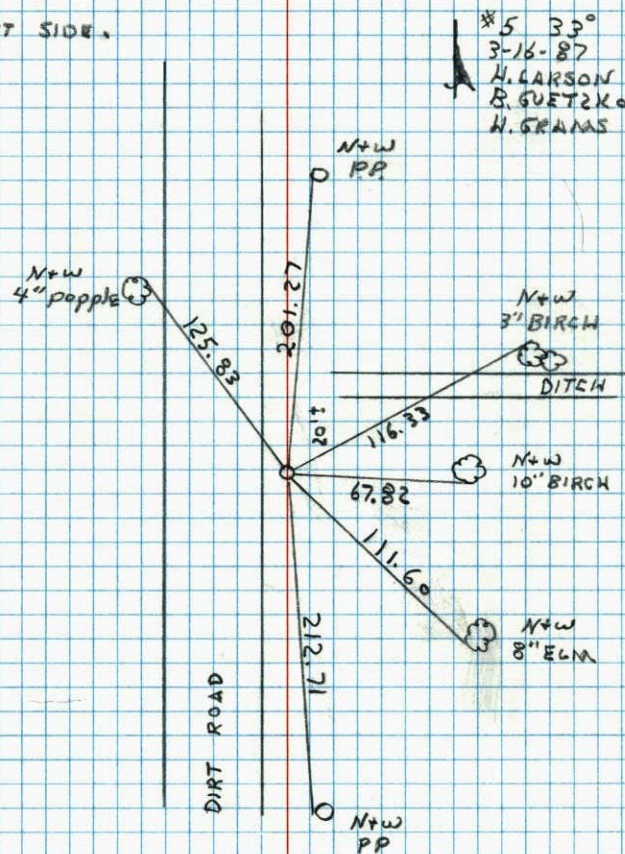


NO. 448

TELETYPE

E 1/4 COR. SEC. 1 T31 R22

FOUND MON. LEANING, WASHINGTON CO. STRAIGHTENED
 WE RETIED. S.I. DOWN .5' SIGN POST ON
 EAST SIDE.

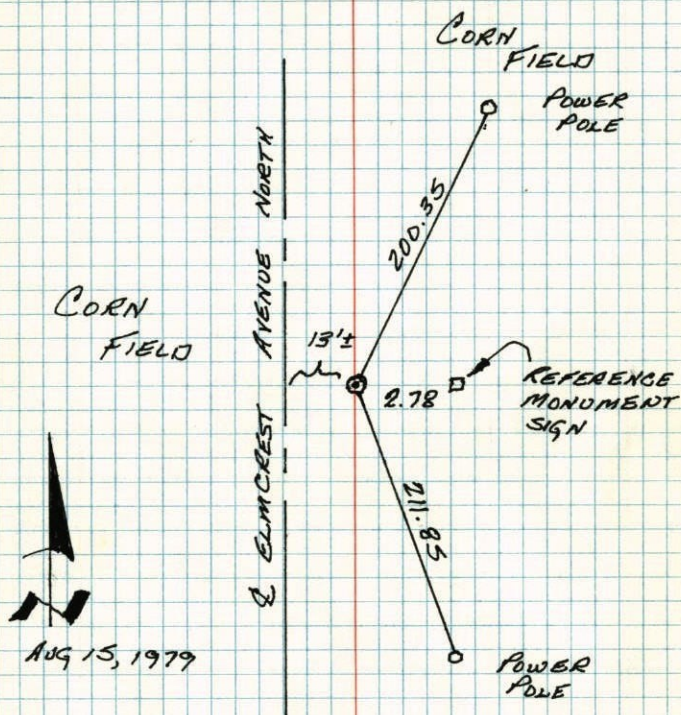


NO. 448

TELETYPE

E 1/4 CORNER SECTION 1-T31-R22

SET A WASHINGTON COUNTY CAST IRON MONUMENT.
POSITION ESTABLISHED ON LINE BETWEEN NW & SW
CORNERS AND ON PROPORTIONATE DISTANCE. CAST
IRON MONUMENT IS FLUSH WITH GROUND LEVEL.
TIES ARE NAIL AND DISK STAMPED "WASHINGTON
COUNTY SURVEYOR."



AUG 15, 1979

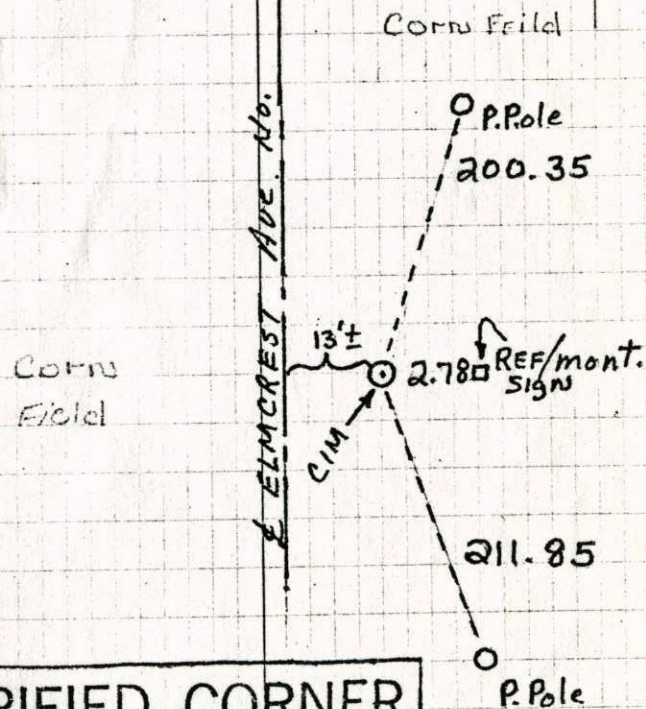
OFFICE OF
PAUL A JOHNSON
WASHINGTON CO.
SURVEYOR

B Houli
D. Orthmeyer
M. Miller

8-15-79

E 1/4 COR. SEC. 6, T31, R21

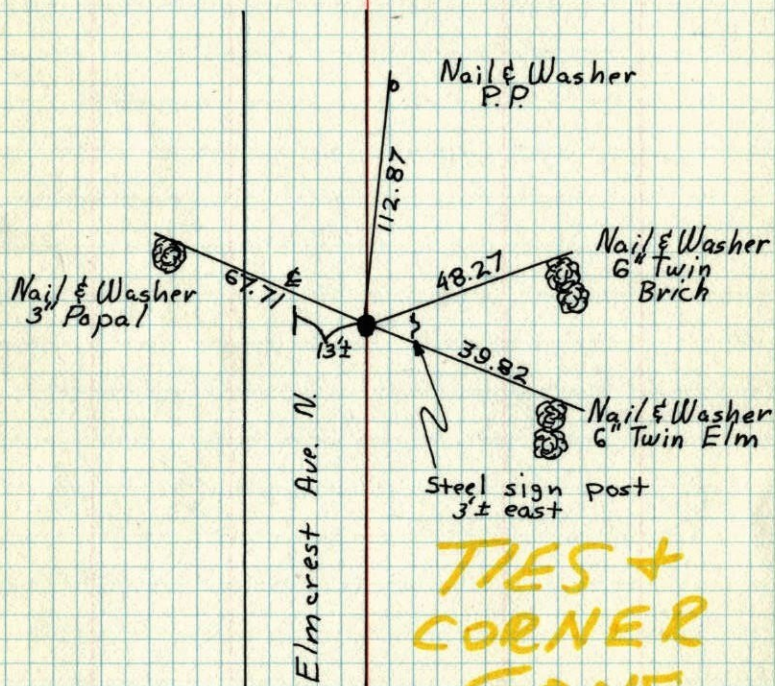
Set A Washington County Cast Iron
Monument - Position established
on line between NW & SW corners
and on proportionate distance.
CIM is flush with ground level.
Ties are N & D stamped Washington
Co. Surveyor.



VERIFIED CORNER
Paul A. Johnson
WASHINGTON COUNTY SURVEYOR

E $\frac{1}{4}$ Cor. Sec. 1 T31 R22Found and tied Washington Co. east
iron monument.

N
 April 9, 1974
 H. Larson
 J. Boettcher
 D. Farmer



**TIES +
 CORNER
 GONE
 8-3-79**

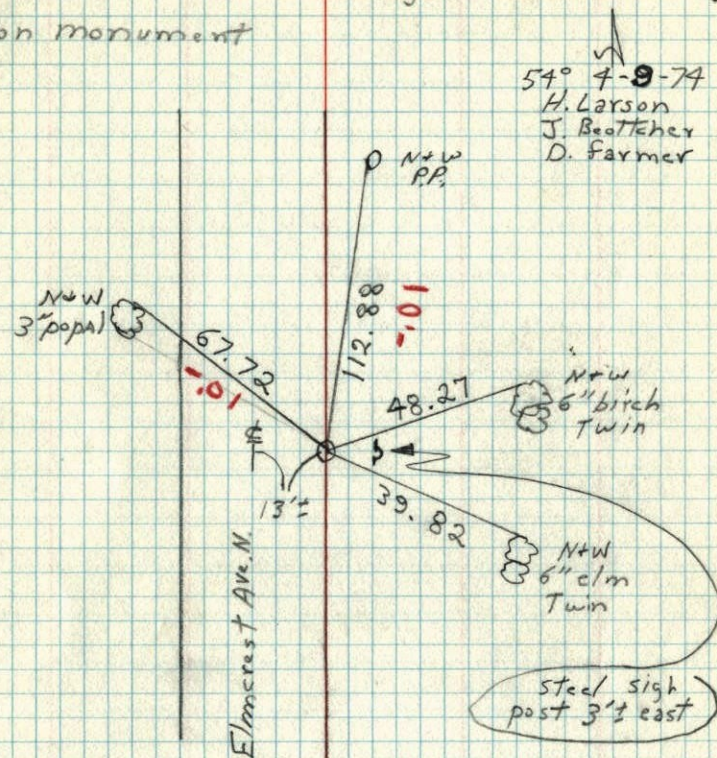
TEMPERATURE CORRECTED
 AND HORIZONTALLY
 TAPED MEASUREMENTS

ROLAND W. ANDERSON
 COUNTY SURVEYOR
 ANOKA COUNTY, MINNESOTA

1974

E $\frac{1}{4}$ Cor. Sec. 1 T31 R22Found and Tied Washington Co. east
Iron monument

54° 4-9-74
 H. Larson
 J. Boettcher
 D. Farmer



Steel sign
 post 3' east