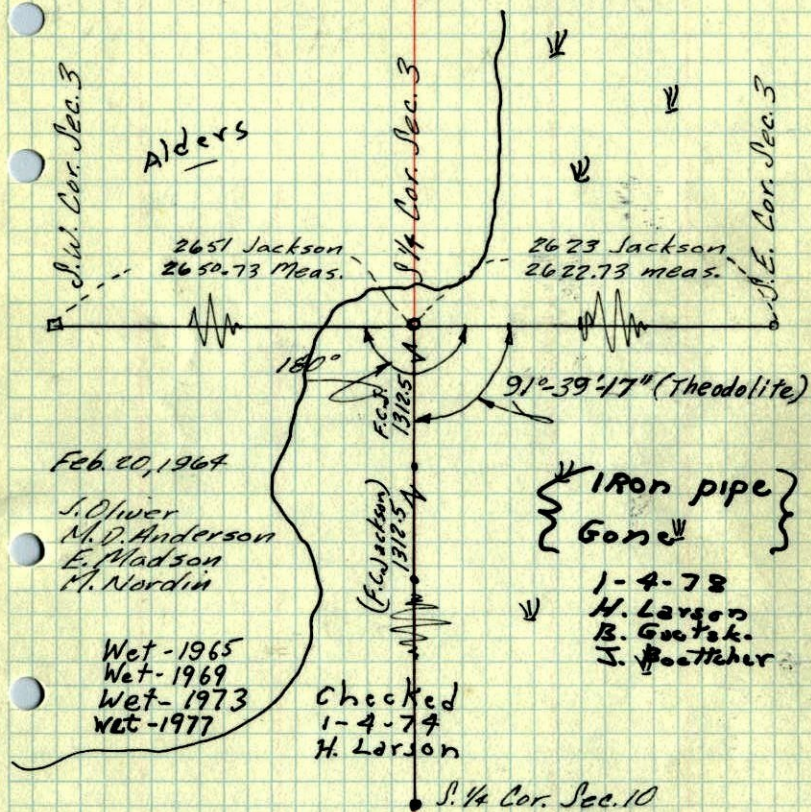


S $\frac{1}{4}$ Cor. Sec. 3-31-22

Could not find cor. set by Jackson in 1950

Set corner from Re-survey

Set 1 inch x 42 foot iron pipe in
Swamp; 4.5 feet of pipe is
above water level



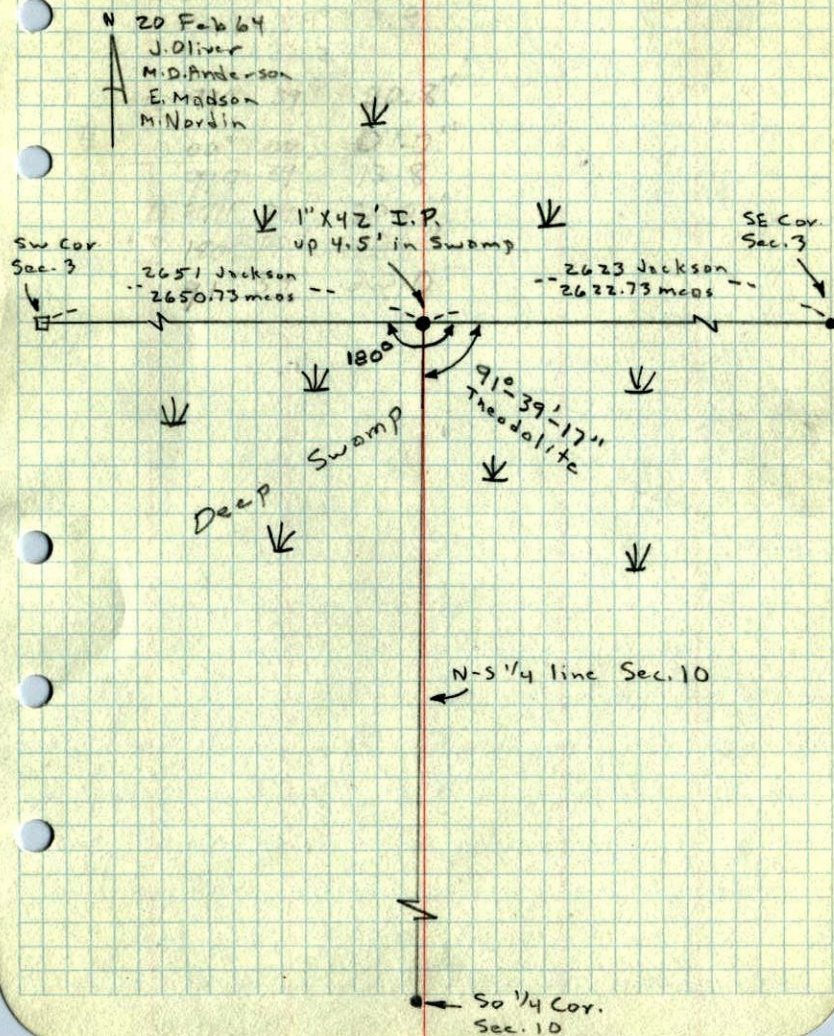
ROLAND W. ANDERSON
COUNTY SURVEYOR
ANOKA COUNTY, MINNESOTA

TEMPERATURE CORRECTED
AND HORIZONTALLY
TAPED MEASUREMENTS

1964

S $\frac{1}{4}$ Cor. Sec. 3, T 31, R 22

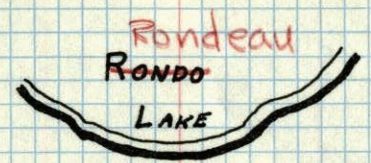
Could not find 3' long I.P. Set by Jackson
in 1950. Reran mile and set on line at proration
over Jackson's Distances (See notes on file) Set
1" x 42' Iron Pipe in Swamp - hit clay at 34'
below Ice and drove pipe down another 3.5'
so that 4.5' of pipe shows above Ice.



1961 13

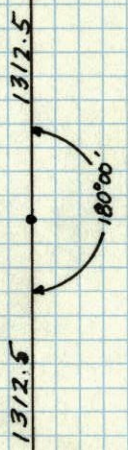
S¹/₄ Sec. 3, T31, R22

1st IP 3' LONG in MARSH
3/10/50 JACKSON



I.P. 2.5 W E
6.7' N of true
CORNER.

Could not find
11 May 1961
POF



Gen. Sec. 10