

CERTIFICATE OF LOCATION OF GOVERNMENT CORNER

County of Anoka

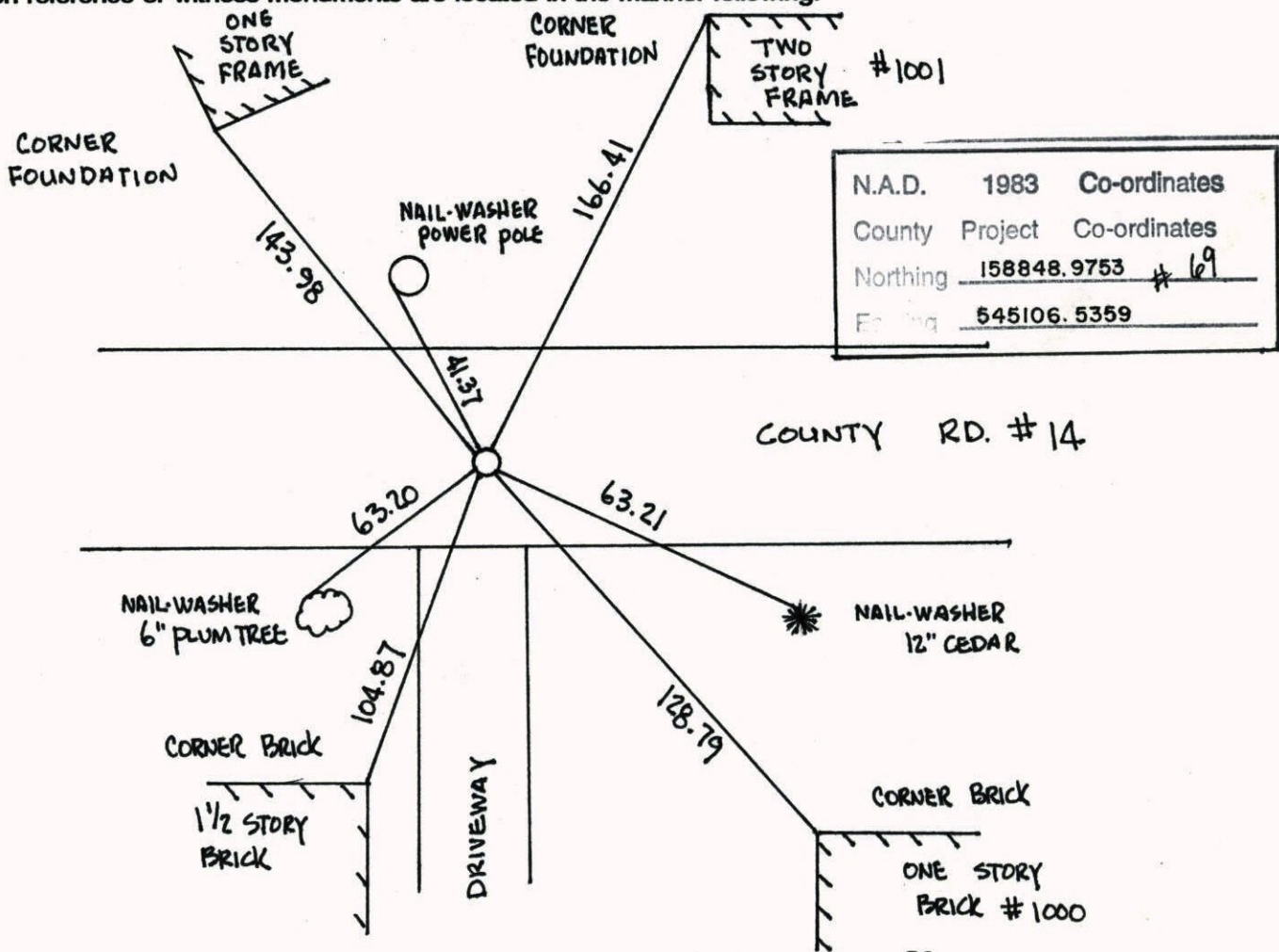
State of Minnesota

SOUTH $\frac{1}{4}$ Corner of Sec. 4 Township 31 Range 22

I hereby certify that on the 5TH day of FEBRUARY, 19 64, I found the described corner which was evidenced by AREA RESURVEY

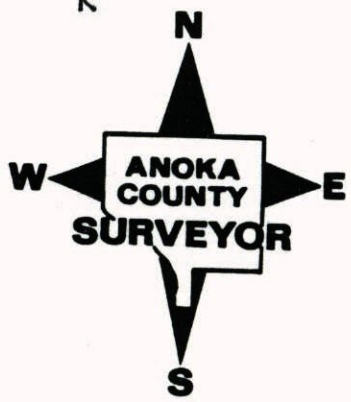
and I further certify that to perpetuate the location of said corner, I did, at the exact location thereof, place a permanent marker consisting of CAST IRON MONUMENT

which reference or witness monuments are located in the manner following:



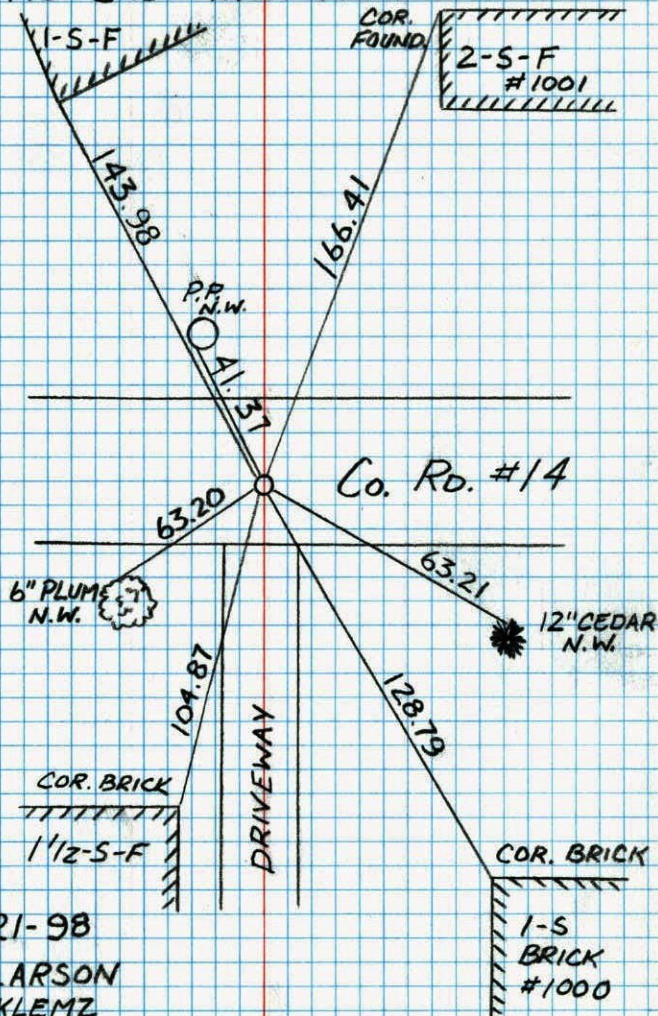
N.A.D.	1983	Co-ordinates
County	Project	Co-ordinates
Northing	158848.9753	# 69
Easting	545106.5359	

Revised date	Revised date	Revised date
9-1-87		
6-28-91		
6-17-96		
1-21-98		



SOUTH 1/4 S.4 T31 R22

RETIE CAST IRON MON.



1-21-98
H. LARSON
B. KLEMZ
J. SIMMER

NO. 448

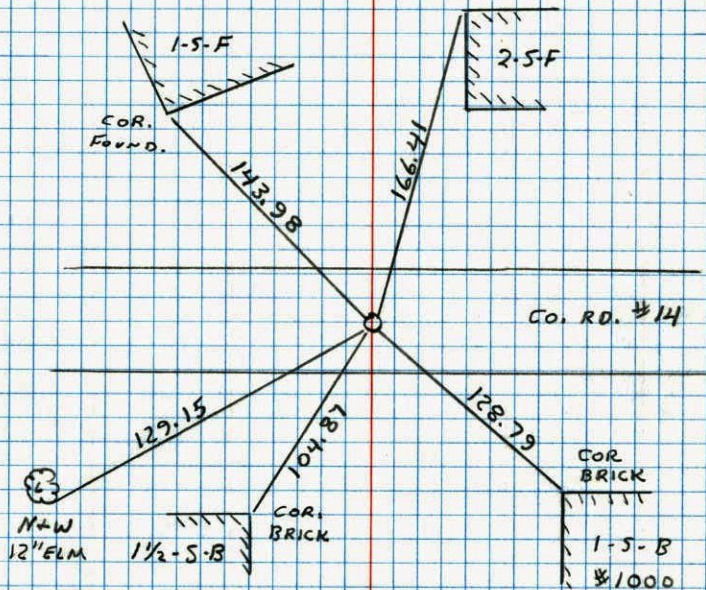
TELETYPE

SOUTH 1/4 COR. SECTION 4 T31 R22

REPLACED AFTER CONSTRUCTION.

G.I. FLUSH PKs 2.00' N + E

9-1-87
D. ROSS
D. VOGEL

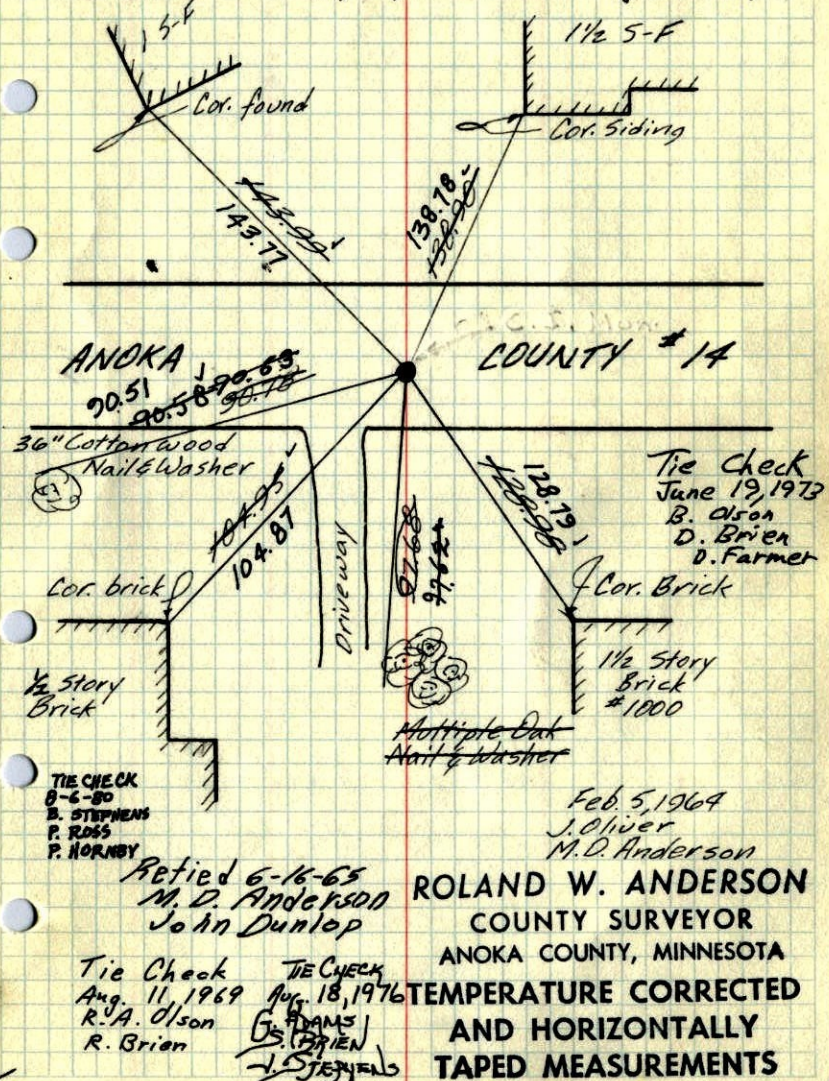


NO. 448

TELETYPE

S. 1/4 Cor. Sec. 4-31-22

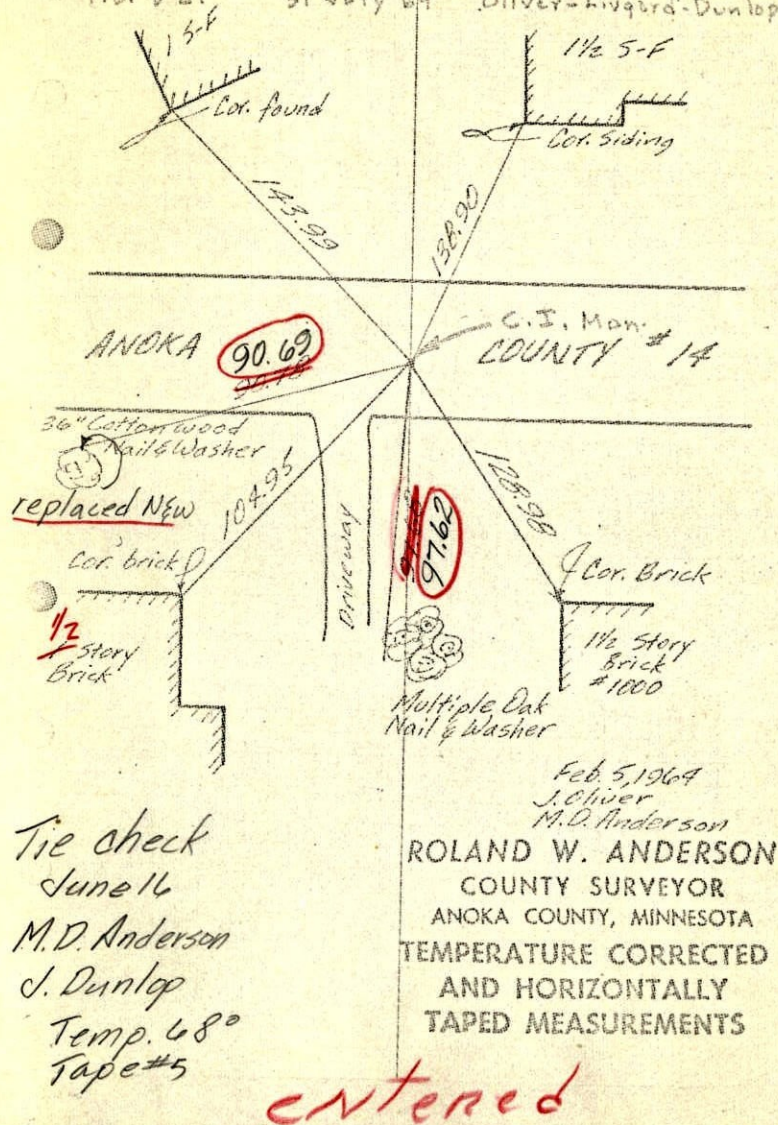
Set Cor. 1/2 way & on line between
sec. corners from re-survey
Set Cast Iron Monument Plush. PK Nails 2.00'
North + East. July 31, 1964 Oliver-Livgard-Dunlop



S. 1/4 Cor. Sec. 4-31-22

1964 18

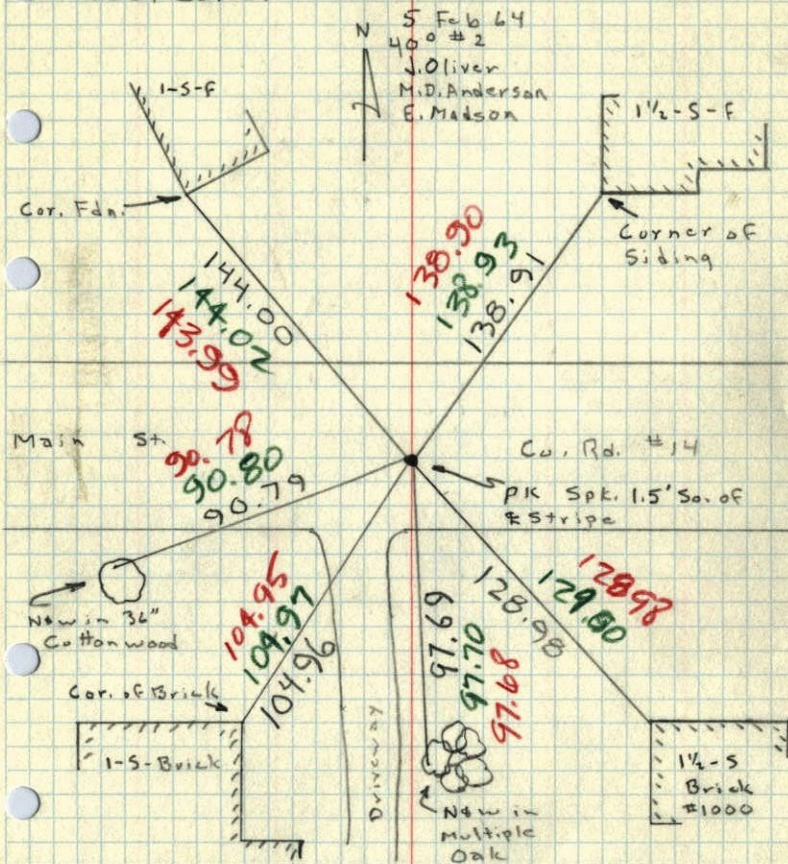
Set Cor. 1/2 way & on line between
sec. corners from re-survey
Set Cast Iron Monument with PK Spikes 2'
No. & E. 31 July 64 Oliver-Livgard-Dunlop



1964

So 1/4 Cor. Sec. 4, T31, R22

Set PK Spk. 1/2 way and on line between
Sec. Cor's.



TEMP. CORR.
TAPE CORR.