

CERTIFICATE OF LOCATION OF GOVERNMENT CORNER

County of Anoka

State of Minnesota

Southwest Corner of Sec. 5 Township 31 Range 22

On the 20th day of May, 1963, the described corner was evidenced by area resurvey

and to perpetuate the location of said corner, at the exact location thereof, a permanent marker was placed consisting of a cast iron monument

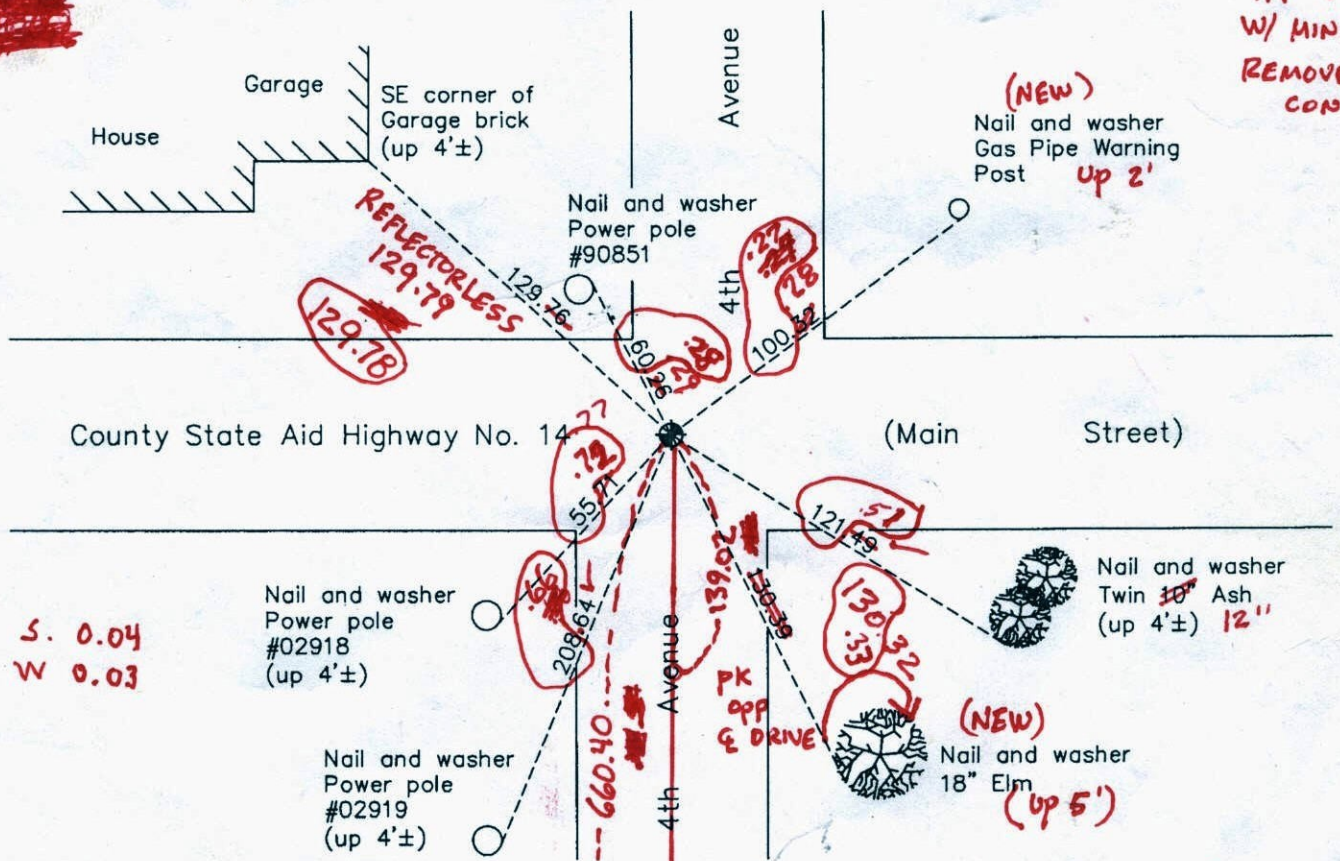
**9-17-12 JS SH
SET C.I.M + RETIED GIRCLE DIST'S
ARE FINAL**

AND on the ___ day of July, 2010, said permanent marker was found flush with the surface and the ties were updated

Updated reference ties are as shown below.

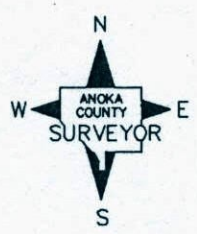
7-2-12
JS SH BK SS
TT + SWING
W/ MINI PRISM
REMOVED FOR
CONST.

~~M
R~~



S. 0.04
W 0.03

S. 0.04
W. 0.03



Revision Date
12/27/10

N.A.D. 1983 Coordinates
(1996 Adjustment)

County Project Coordinates	
Northing	158917.0585 02923
Easting	537208.3552
Date	1/21/98

PK
@ ♀

I hereby certify that this United States public land survey monument record is correct and complete to the best of my knowledge and belief.

Larry D. Hoium Date 12/27/10
 Larry D. Hoium, Anoka County Surveyor
 Minnesota License Number 18165

VRS LOCATION BEFORE REMOVAL 3DQ=0.04

N: 158916.9998
E: 537208.3195

CERTIFICATE OF LOCATION OF GOVERNMENT CORNER

County of Anoka

State of Minnesota

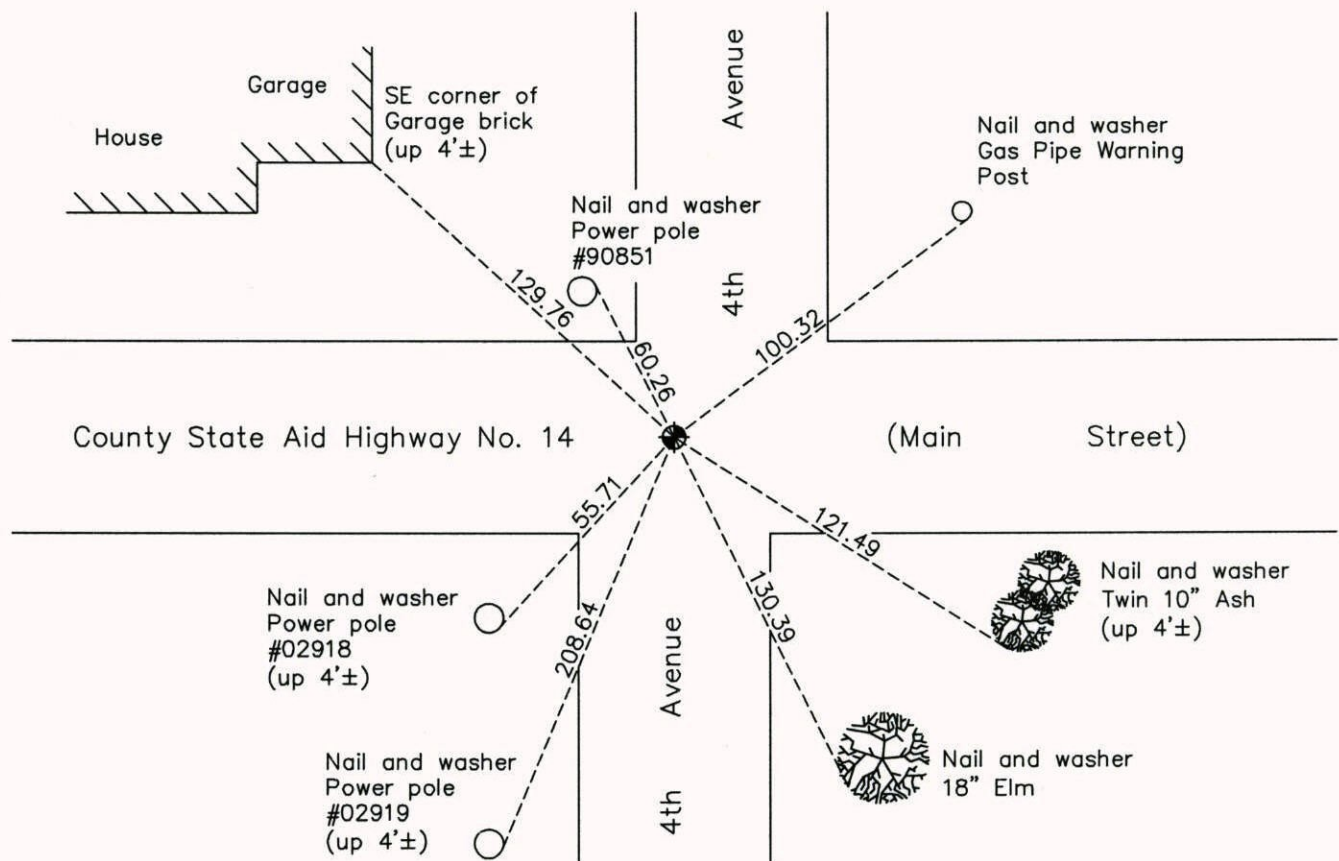
Southwest Corner of Sec. 5 Township 31 Range 22

On the 20th day of May, 1963, the described corner was evidenced by area resurvey

and to perpetuate the location of said corner, at the exact location thereof, a permanent marker was placed consisting of a cast iron monument

AND on the ___ day of July, 2010, said permanent marker was found flush with the surface and the ties were updated

Updated reference ties are as shown below.



N

ANOKA COUNTY SURVEYOR

S

Revision Date

12/27/10

N.A.D. 1983 Coordinates
(1996 Adjustment)

County Project Coordinates	
Northing	158917.0585
Easting	537208.3552
Date	1/21/98

I hereby certify that this United States public land survey monument record is correct and complete to the best of my knowledge and belief.

Larry D. Hoium Date 12/27/10

Larry D. Hoium, Anoka County Surveyor

Minnesota License Number 18165

CERTIFICATE OF LOCATION OF GOVERNMENT CORNER

County of Anoka

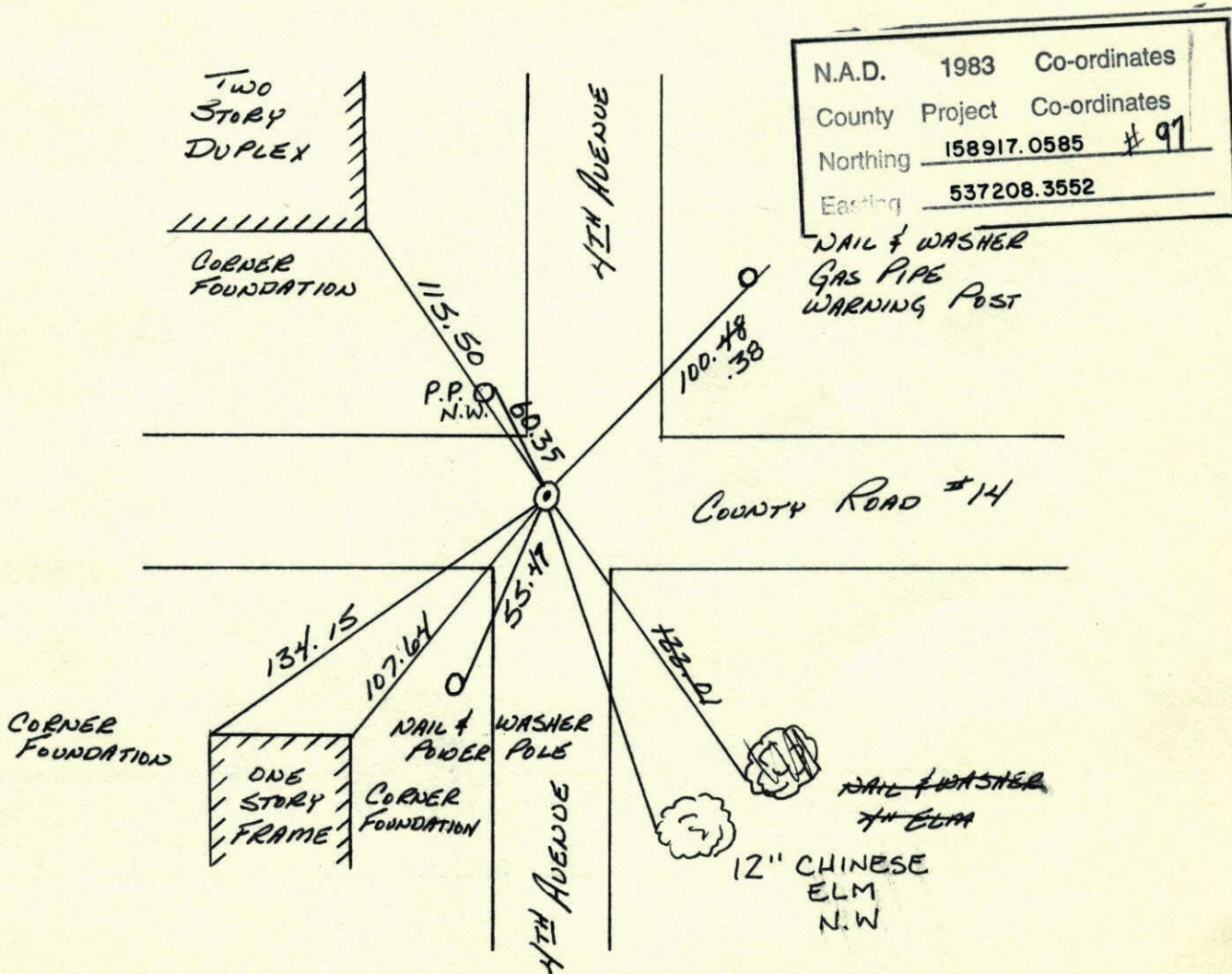
State of Minnesota

SOUTHWEST Corner of Sec. 5 Township 31 Range 22

I hereby certify that on the 20 day of MAY, 1963, I found the described corner which was evidenced by AREA RESURVEY

and I further certify that to perpetuate the location of said corner, I did, at the exact location thereof, place a permanent marker consisting of CAST IRON MONUMENT

which reference or witness monuments are located in the manner following:



N.A.D.	1983	Co-ordinates
County	Project	Co-ordinates
Northing	158917.0585	# 91
Easting	537208.3552	

Revised date
LARSON
6-28-91
6-17-96
1-21-98

By
9-2-87

Minnesota State Plane Coordinates
South Zone

Y _____ X _____

County Surveyor _____

Date _____

Registered Land Surveyor No. _____

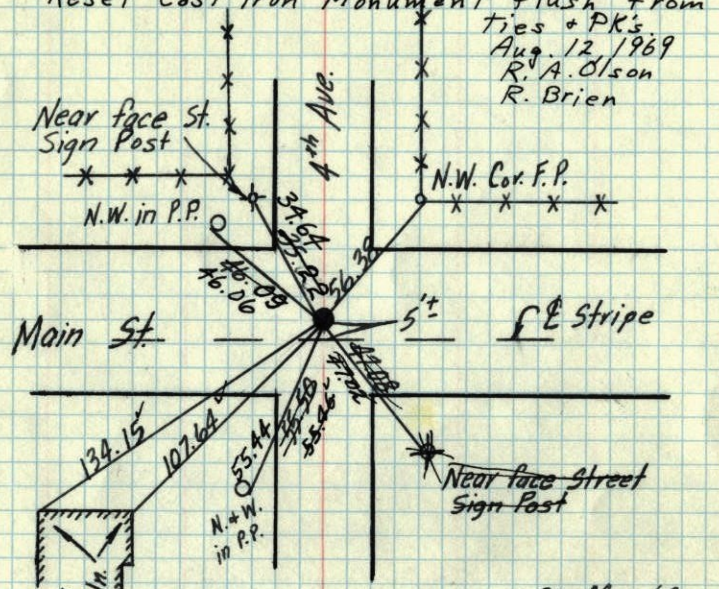
1963³²

SW Cor. Sec. 5, T.31, R. 22

Set Cast Iron Monument from Resurvey

PK Spks 2' North and 2' East

Reset Cast Iron Monument flush from ties + PK's
Aug. 12, 1969
R. A. Olson
R. Brien



Tie Check
June 15, 1973
B. Olson
D. Brien
D. Farmer

20 May 63
J. Oliver
M. Anderson

TEMPERATURE CORRECTED
AND HORIZONTALLY
TAPED MEASUREMENTS

ROLAND W. ANDERSON
COUNTY SURVEYOR
ANOKA COUNTY, MINNESOTA

Retied 6-16-65
M.D. Anderson
John Dunlop

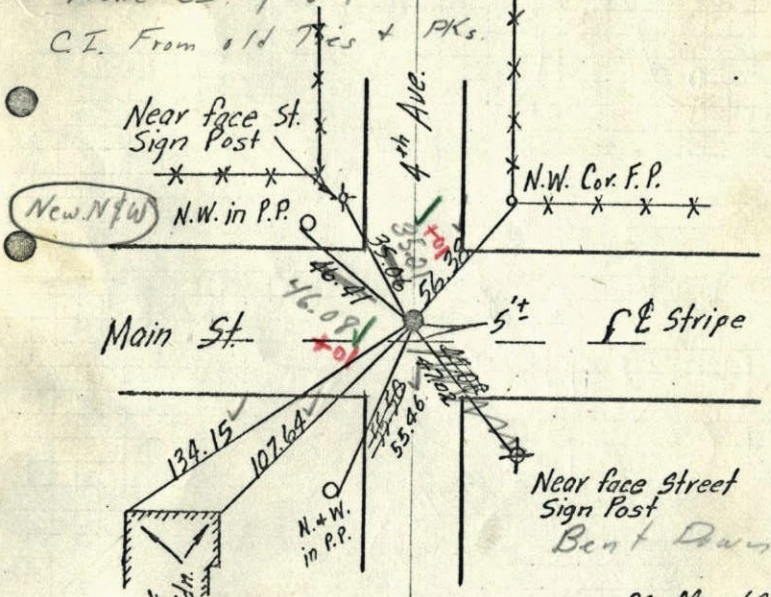
32

SW Cor. Sec. 5, T.31, R. 22 1969

Set Cast Iron Monument from Resurvey

PK Spks 2' North and 2' East

Found CI up 1/2" & Broken off. Reset
C.I. From old Ties + PK's.



20 May 63
J. Oliver
M. Anderson

TEMPERATURE CORRECTED
AND HORIZONTALLY
TAPED MEASUREMENTS

ROLAND W. ANDERSON
COUNTY SURVEYOR
ANOKA COUNTY, MINNESOTA

Retied 6-16-65
M.D. Anderson
John Dunlop

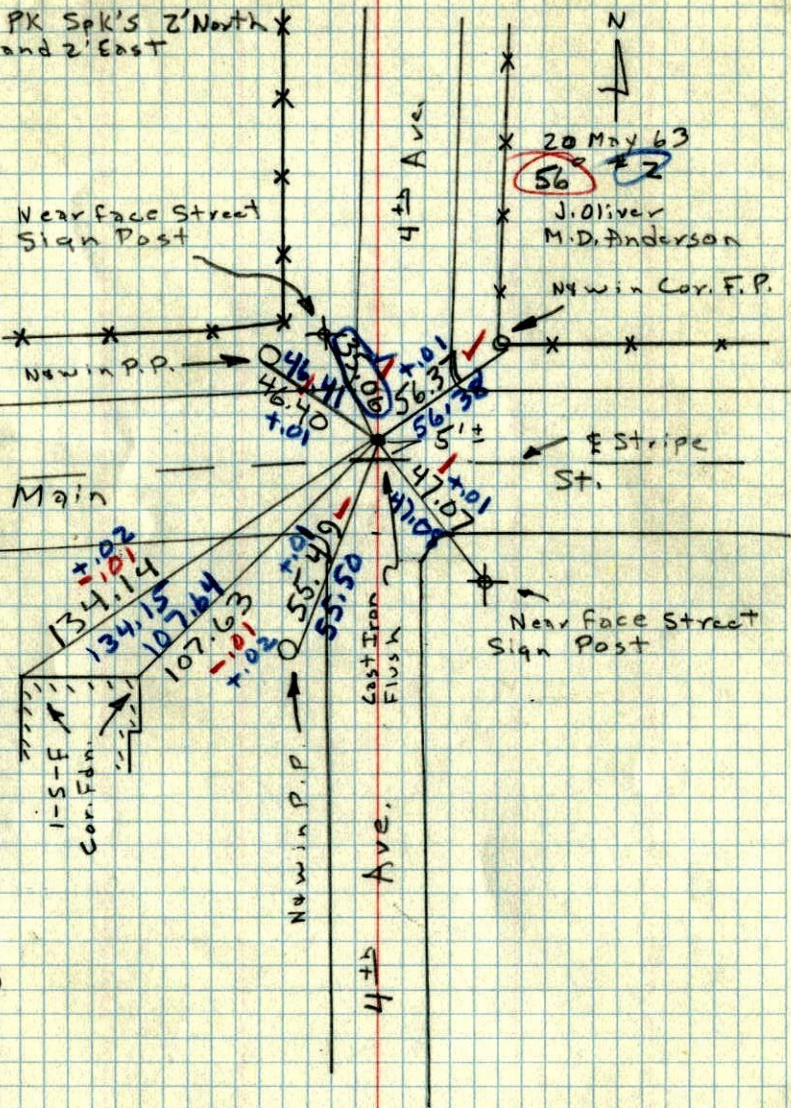
8-12-69
Tape #5 ✓
90° ✓
R.A. Olson
R. Brien

1963

SW Cor. Sec. 5, T31, R22

Set Cast Iron Monument from Resurvey.

PK Spk's 2' North
and 2' East



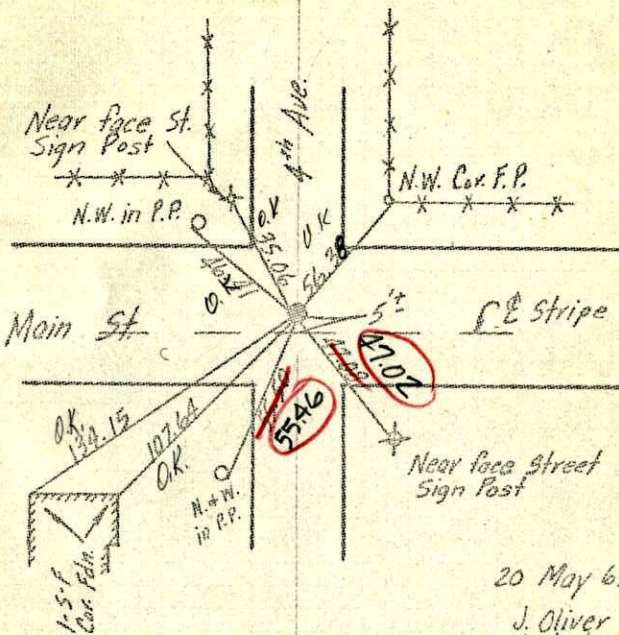
NO DATE

21

SW Cor. Sec. 5, T31, R22

Set Cast Iron Monument from Resurvey

PK Spk's 2' North and 2' East



20 May 63

J. Oliver
M. Anderson

Tie check
M.D. Anderson
J. Dunlop
720
#5

TEMPERATURE CORRECTED
AND HORIZONTALLY
TAPED MEASUREMENTS

ROLAND W. ANDERSON
COUNTY SURVEYOR
ANOKA COUNTY, MINNESOTA