

# CERTIFICATE OF LOCATION OF GOVERNMENT CORNER

County of Anoka

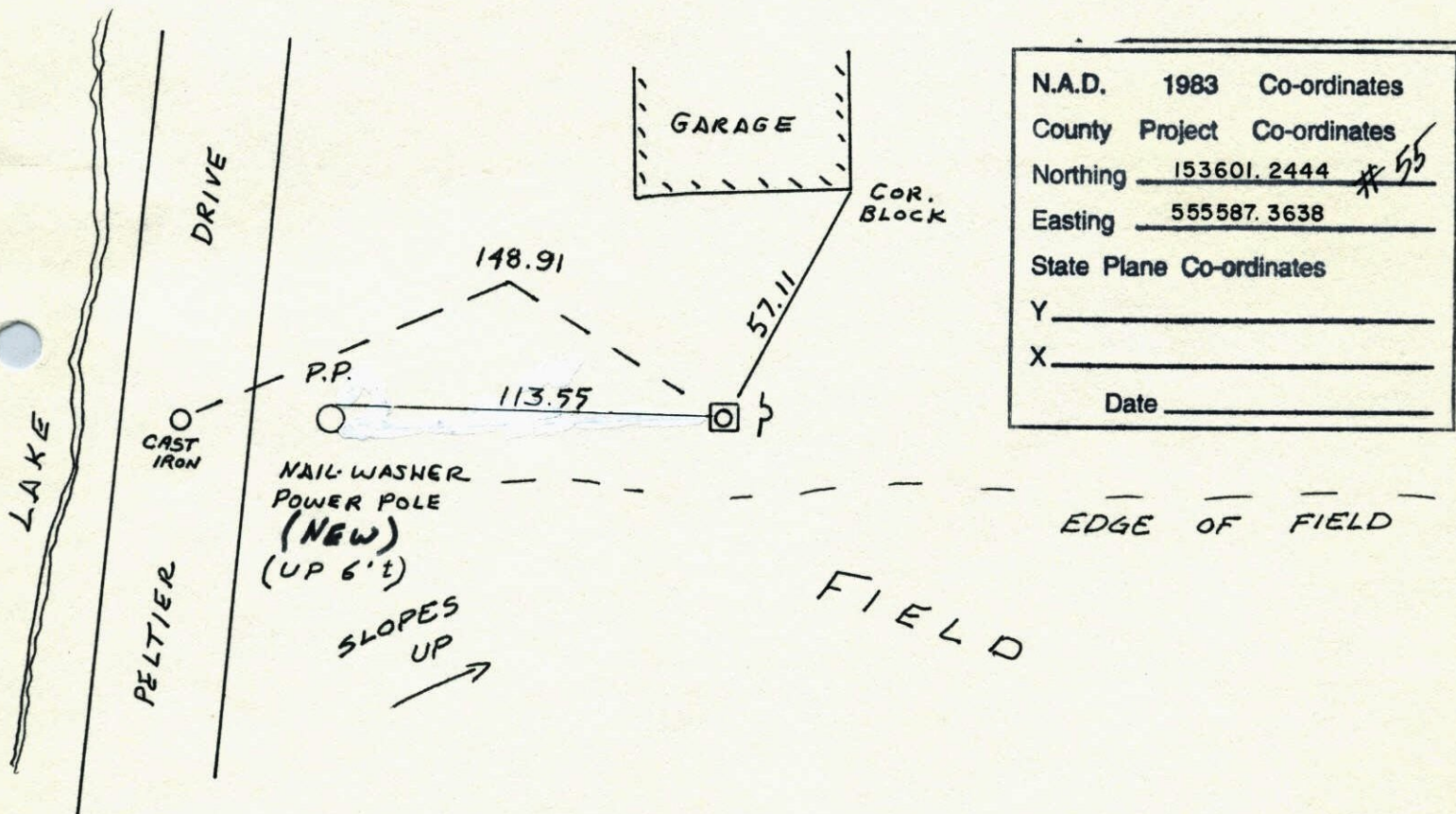
State of Minnesota

NORTH 1/4 Corner of Sec. 14 Township 31 Range 22

I hereby certify that on the 13<sup>TH</sup> day of JAN., 1964, I found the described corner which was evidenced by 4" X 4" CONCRETE

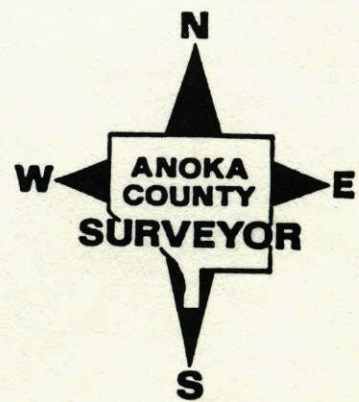
and I further certify that to perpetuate the location of said corner, I did, at the exact location thereof, place a permanent marker consisting of CAST IRON MONUMENT ON TOP OF CONCRETE SIGN AND POST ON EAST SIDE

which reference or witness monuments are located in the manner following:



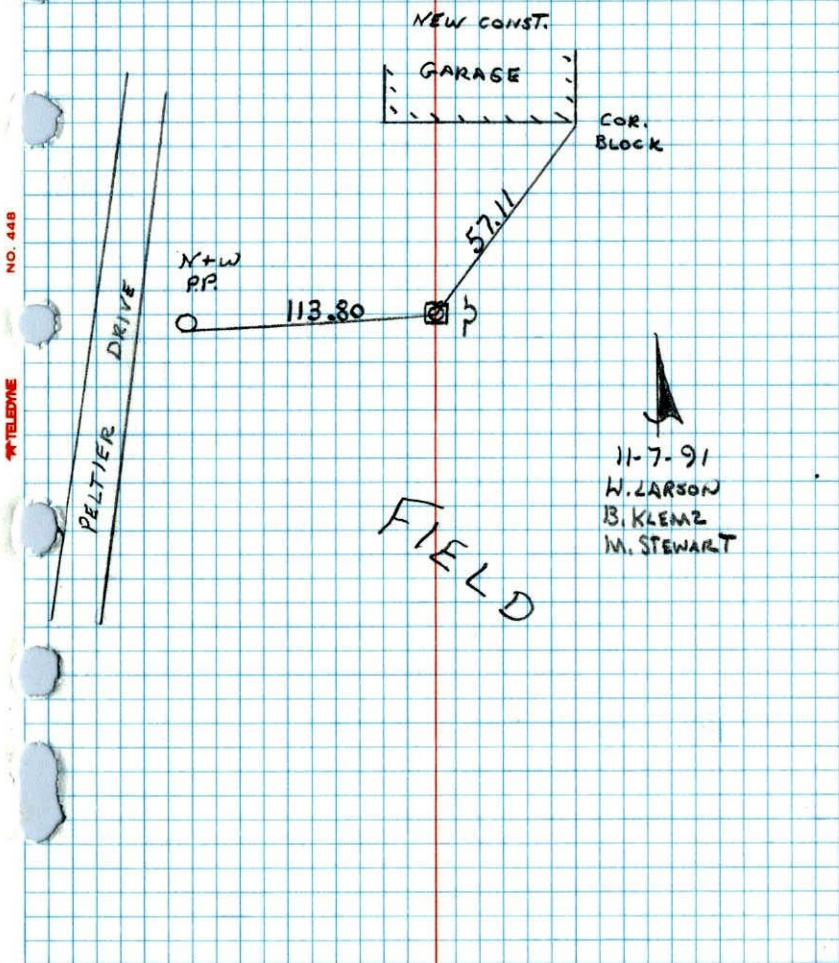
N.A.D.	1983	Co-ordinates
County	Project	Co-ordinates
Northing	<u>153601.2444</u>	<i>55</i>
Easting	<u>555587.3638</u>	
State Plane Co-ordinates		
Y	_____	
X	_____	
Date	_____	

Revised date	Revised date	Revised date
1-13-64	7-22-86	
7-9-65	11-7-91 WL	
8-4-69	REPLACED 6-10-92 *	
7-2-73	6-18-96	
8-16-76	2-23-98	
7-29-80		
5-26-83		





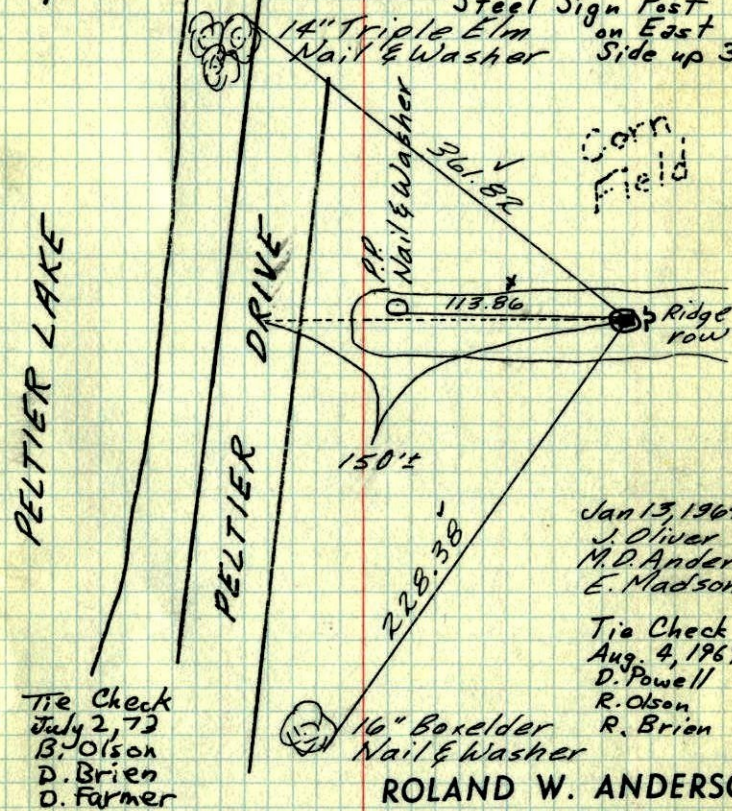
N<sup>1</sup>/<sub>4</sub> CORNER SECTION 14 T31 R22  
 REPLACED CAST IRON MONUMENT ON  
 TOP OF CONCRETE SIGN AND POST ON  
 EAST SIDE



N<sup>1</sup>/<sub>4</sub> Cor. Sec. 14-31-22

found 4"x4" Concrete Monument  
 Monument up 0.2'

Iron pipe on west up 1.5'  
 Replaced With Cast Iron Mob. 7-2-73.  
 14" Triple Elm Steel Sign Post  
 Nail & Washer on East Side up 3 1/2'



ROLAND W. ANDERSON  
 COUNTY SURVEYOR  
 ANOKA COUNTY, MINNESOTA

TEMPERATURE CORRECTED  
 AND HORIZONTALLY  
 TAPED MEASUREMENTS

Tie Check  
 July 2, 73  
 B. Olson  
 D. Brien  
 D. Farmer

Retied 7-9-65  
 M.D. Anderson  
 John Dunlop  
 Tie Check  
 Aug 13, 1976  
 G. Adams  
 S. Brien  
 J. Stephens



1969 46

N. 1/4 Cor. Sec. 14-31-22

found 4"x4" Concrete Monument  
Monument up 0.2'

Iron pipe on west up 1.5'

Steel sign post on E. side  
up 3'

14" Triple Elm  
Nail & Washer

Could not check

Corn Field

PELTIER LAKE

PELTIER DRIVE

14" Triple Elm  
Nail & Washer

113.86

150'±

228.38

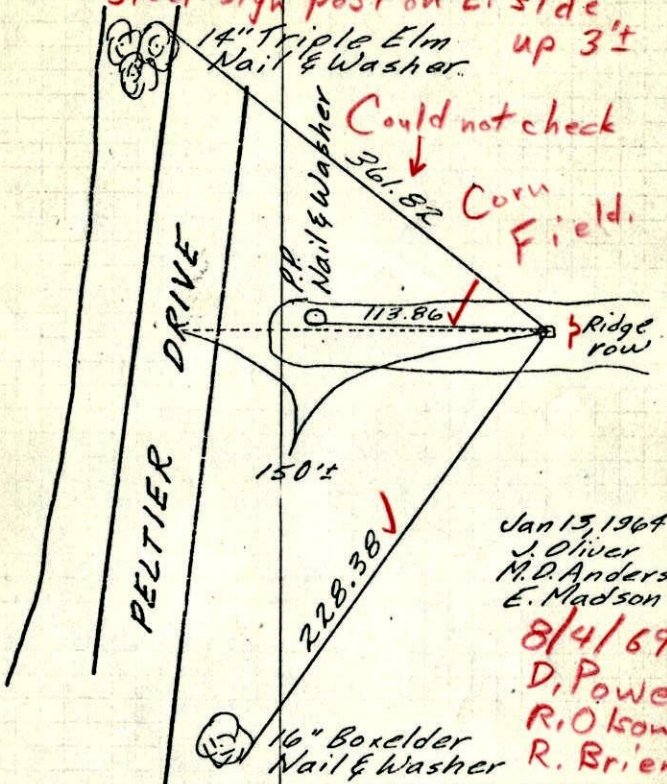
Jan 13, 1964  
J. Oliver  
M.D. Anderson  
E. Madson

8/4/69  
D. Powell  
R. Olson  
R. Brien

ROLAND W. ANDERSON  
COUNTY SURVEYOR  
ANOKA COUNTY, MINNESOTA

TEMPERATURE CORRECTED  
AND HORIZONTALLY  
TAPED MEASUREMENTS

Retied 7-9-65  
M.D. Anderson  
John Dunlap



1964

N. 1/4 Cor. Sec. 14, T31, R22

found 4" Sq. Concrete Monument up 0.2'

1/2" I.P. up 1.5' on W. Side.

13 Jan 64  
150 #2  
J. Oliver  
M.D. Anderson  
E. Madson

Lake

Drive

New in 14" Triple Elm  
361.98  
361.86

New in P.P.  
113.86  
113.89  
113.87

Conc. Mon on Ridge Row

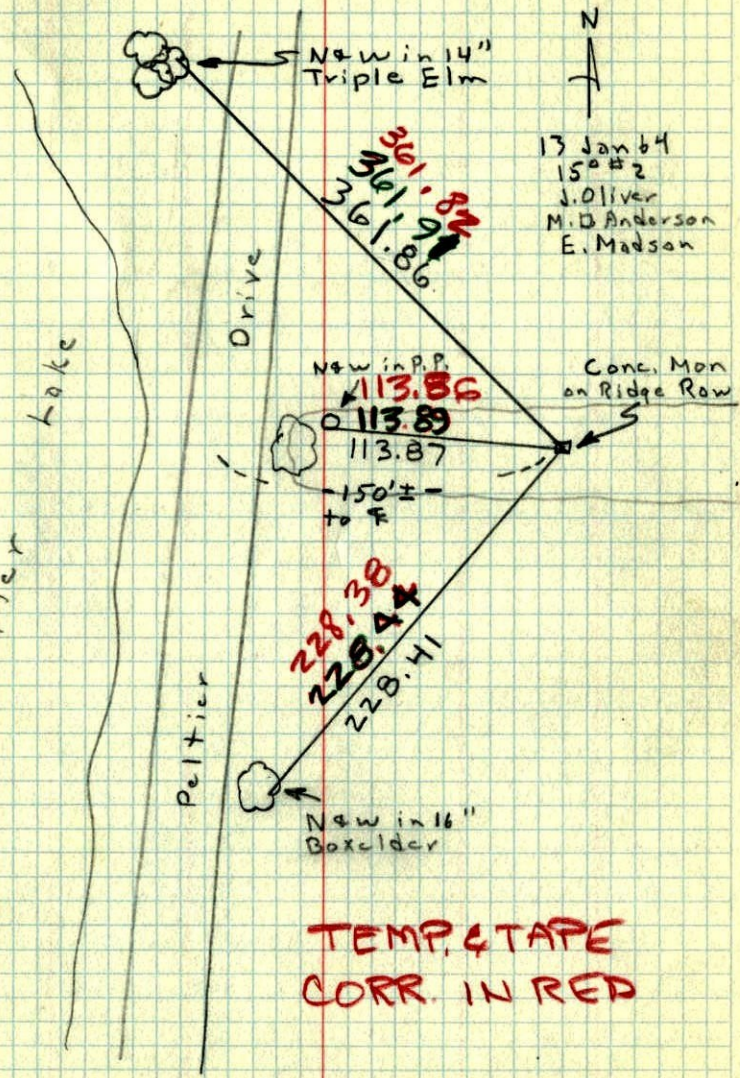
228.38  
228.44  
228.41

New in 16" Boxelder

TEMP. & TAPE  
CORR. IN RED

Peltier

Peltier





North  
~~South~~ <sup>14</sup> 1/4 Cor. Sec. ~~X~~ T 31-R22

found Concrete Mon. at Surface  
along field line

F.R.K. B.L.S. 6469

Nail & Washer  
in PP O 113.55 □ Measured 2629.76  
6' Above ground →  
- 170' to -  
Water Dept. Mon.

F.R. KVIDEA  
6469