

CERTIFICATE OF LOCATION OF GOVERNMENT CORNER

County of Anoka

State of Minnesota

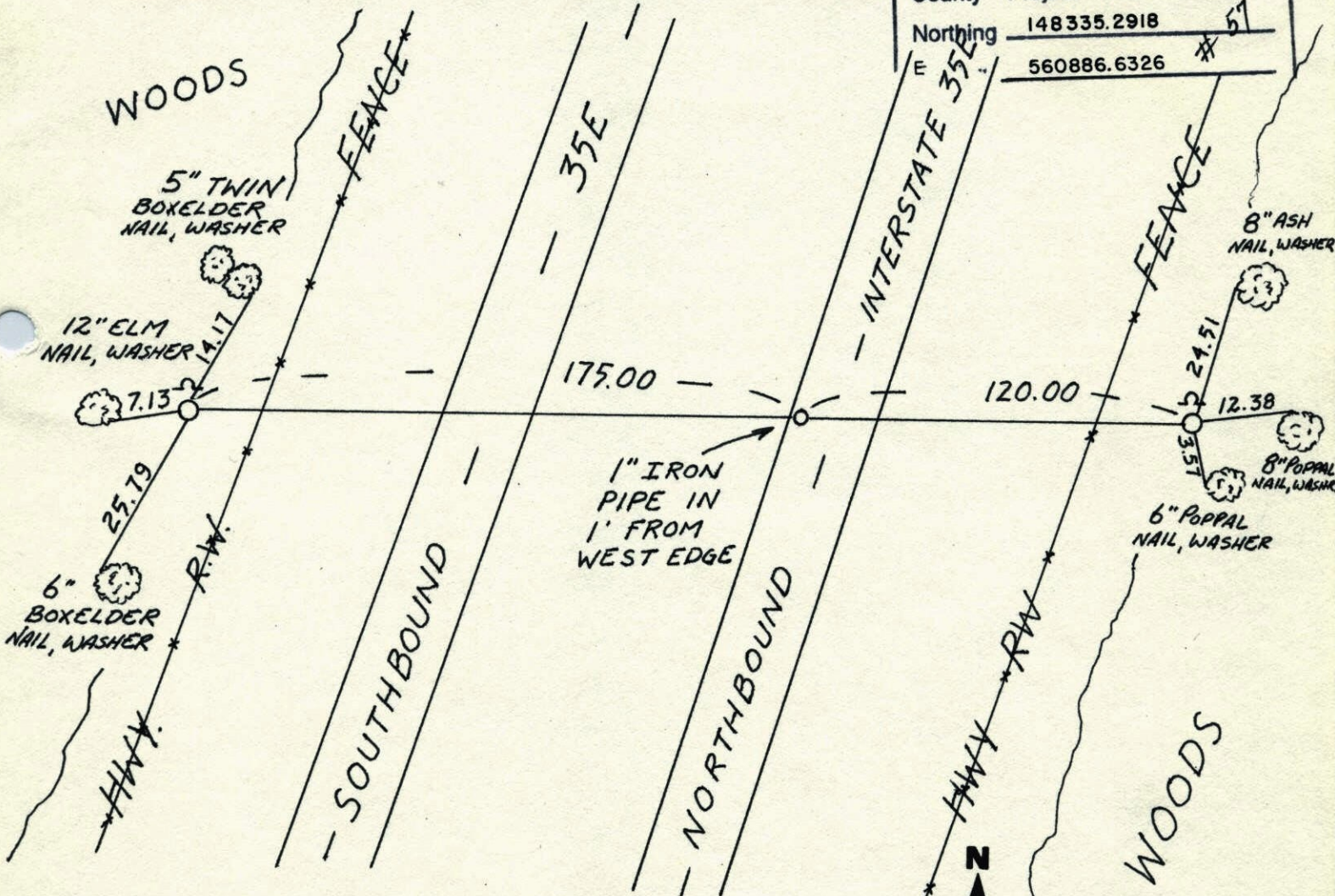
SOUTH QTR Corner of Sec. 13 Township 31 Range 22

I hereby certify that on the 23 day of SEPT., 19 75, I found the described corner which was evidenced by AREA RESURVEY

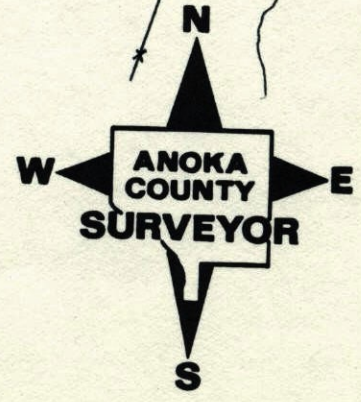
and I further certify that to perpetuate the location of said corner, I did, at the exact location thereof, place a permanent marker consisting of CAST IRON MON(S) SIGN POSTS
ON NORTH SIDE OF WITNESSES

which reference or witness monuments are located in the manner following:

N.A.D.	1983	Co-ordinates
County	Project	Co-ordinates
Northing	148335.2918	# 51
Easting	560886.6326	#



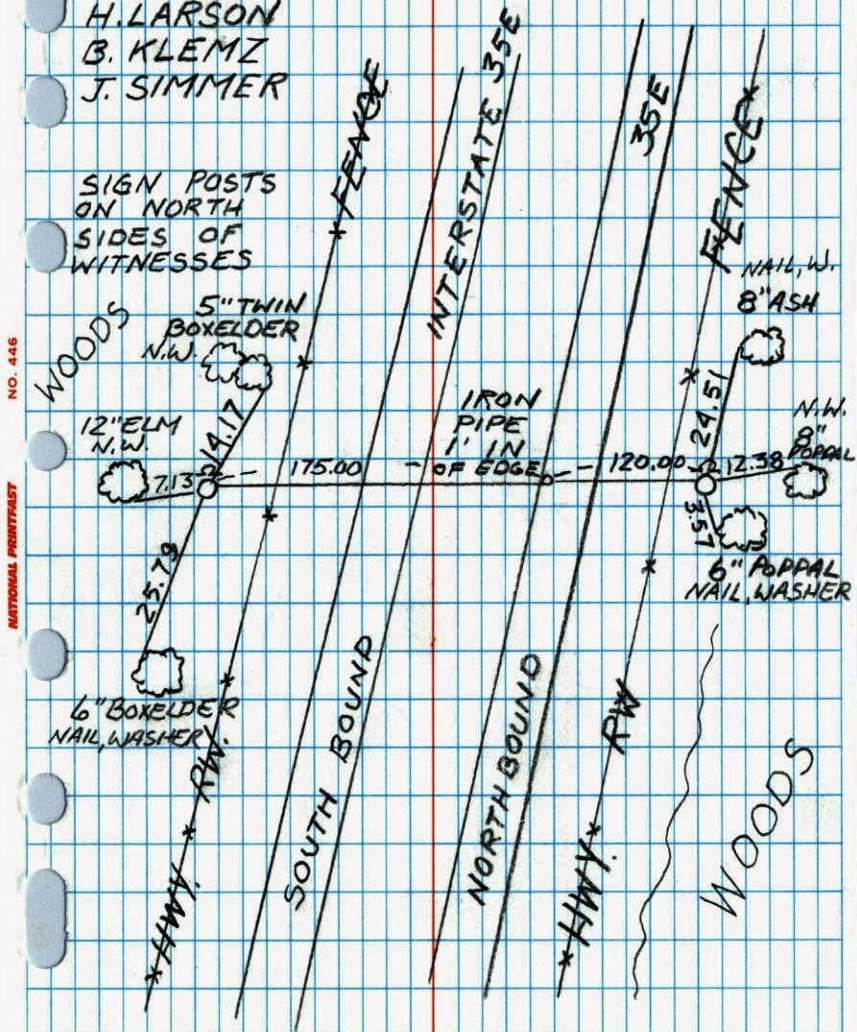
Revised date	Revised date	Revised date
7-15-96		
3-26-98		



SOUTH QTR. SEC 13 T31 R22

3-26-98
H. LARSON
B. KLEMZ
J. SIMMER

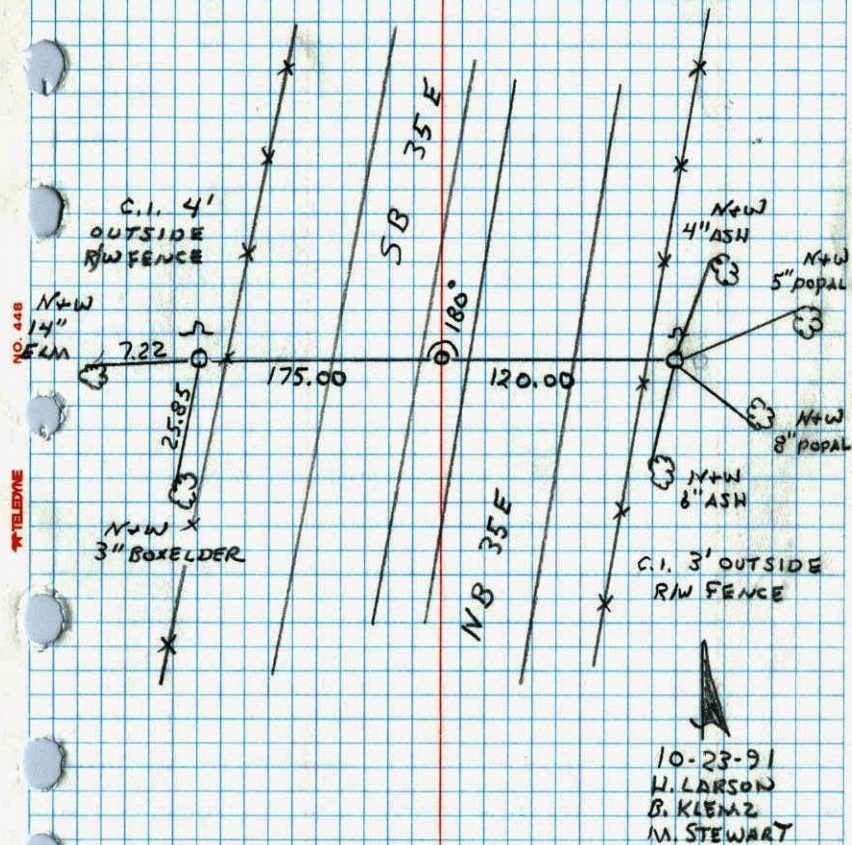
SIGN POSTS
ON NORTH
SIDES OF
WITNESSES



NATIONAL FOREST
NO. 446

S 1/4 COR. SECTION 13 T31 R22

RETIRED CAST IRON MONUMENTS
SIGNS & POSTS ON NORTH SIDES



NATIONAL FOREST
NO. 446

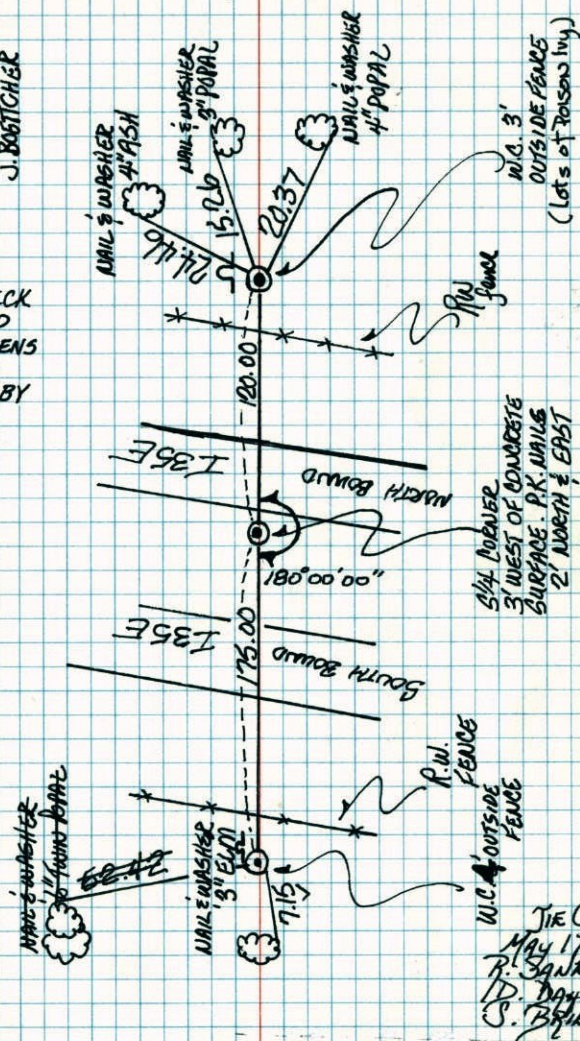
10-23-91
H. LARSON
B. KLEMZ
M. STEWART

S 1/4 CORNER SEC. 13 T.31 R.22

SET EAST IRON MONUMENTS FROM AREA RESURVEY
 EAST IRONS SET FLUSH, SIGN & POSTS ON NO. SIDE

9-23-75
 H. LARSON
 B. GUBTEZKO
 J. BOSTTCHER

TIE CHECK
 7-28-80
 B. STEPHENS
 P. ROSS
 P. HORNBY



1/4 CORNER
 3' WEST OF CONCRETE
 SURFACE. PK. NAILS
 2' NORTH & EAST

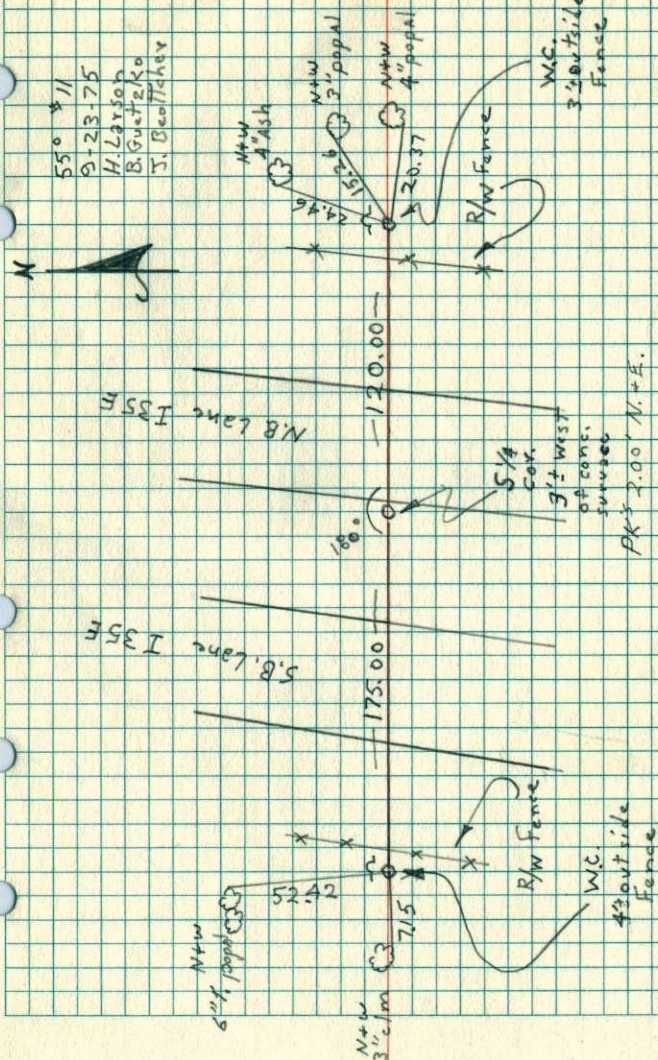
TIE CHECK
 MAY 17 1977
 R. SANNERUP
 D. BROWN
 S. BRIEN

TEMPERATURE CORRECTED ROLAND W. ANDERSON
 AND HORIZONTALLY COUNTY SURVEYOR
 TAPED MEASUREMENTS ANOKA COUNTY, MINNESOTA

S 1/4 Cor. Sec. 13 T.31 R.22

Set east iron monuments from
 area resurvey, east irons flush
 with sign & posts on north sides of W.C.

55° 4' 11
 9-23-75
 H. Larson
 B. Gubtezko
 J. Bosttcher



1/4 COR.
 3' WEST
 OF CONCR.
 SURFACE
 PK. 2.00' N. + E.