

# CERTIFICATE OF LOCATION OF GOVERNMENT CORNER

County of Anoka

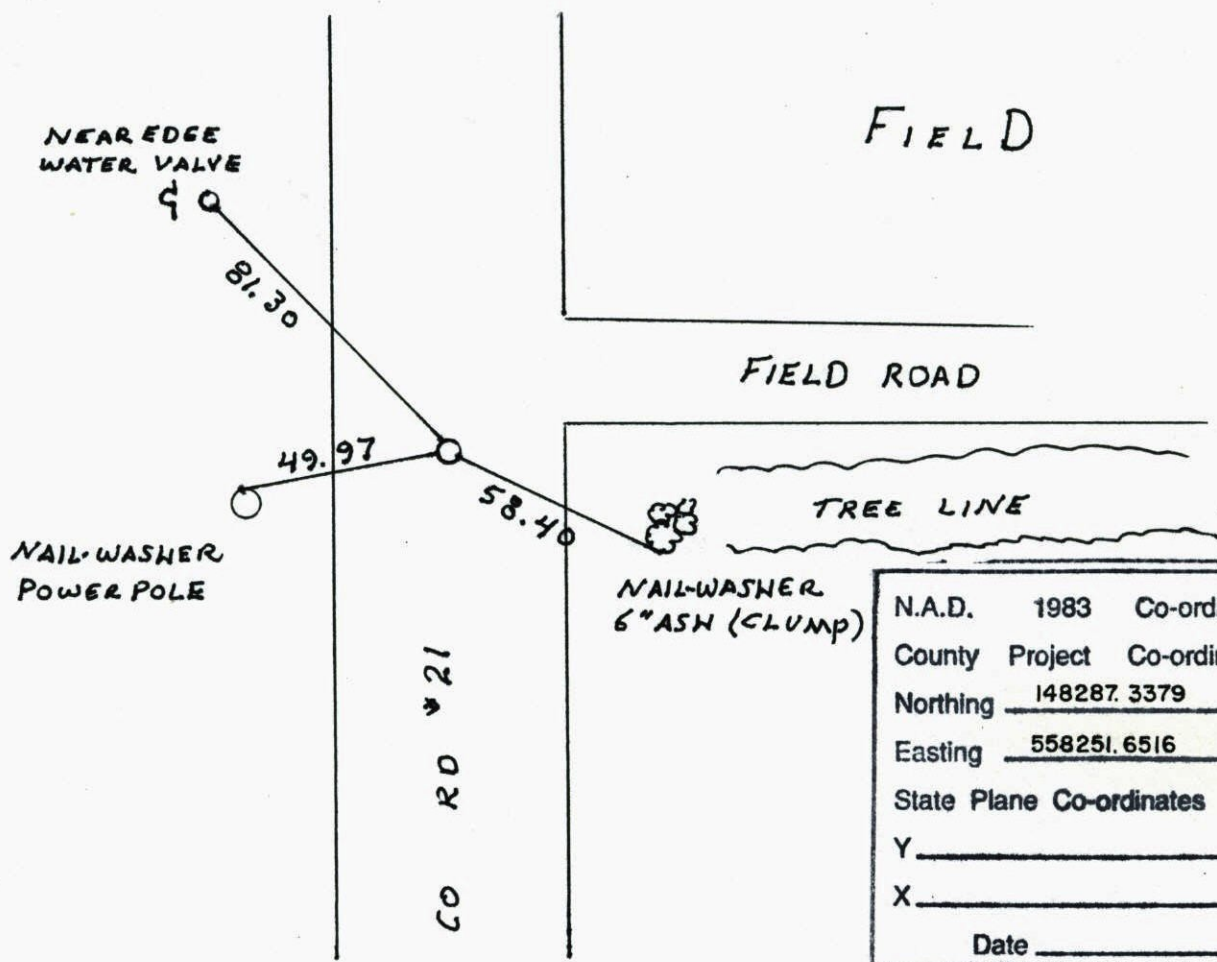
State of Minnesota

SOUTHEAST Corner of Sec. 14 Township 31 Range 22

I hereby certify that on the 23 day of MARCH, 19 62, I found the described corner which was evidenced by CONCRETE MONUMENT

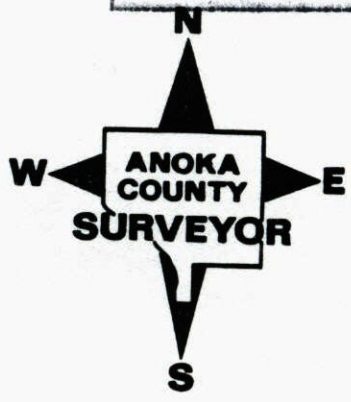
and I further certify that to perpetuate the location of said corner, I did, at the exact location thereof, place a permanent marker consisting of CAST IRON MONUMENT ON TOP OF CONCRETE

which reference or witness monuments are located in the manner following:



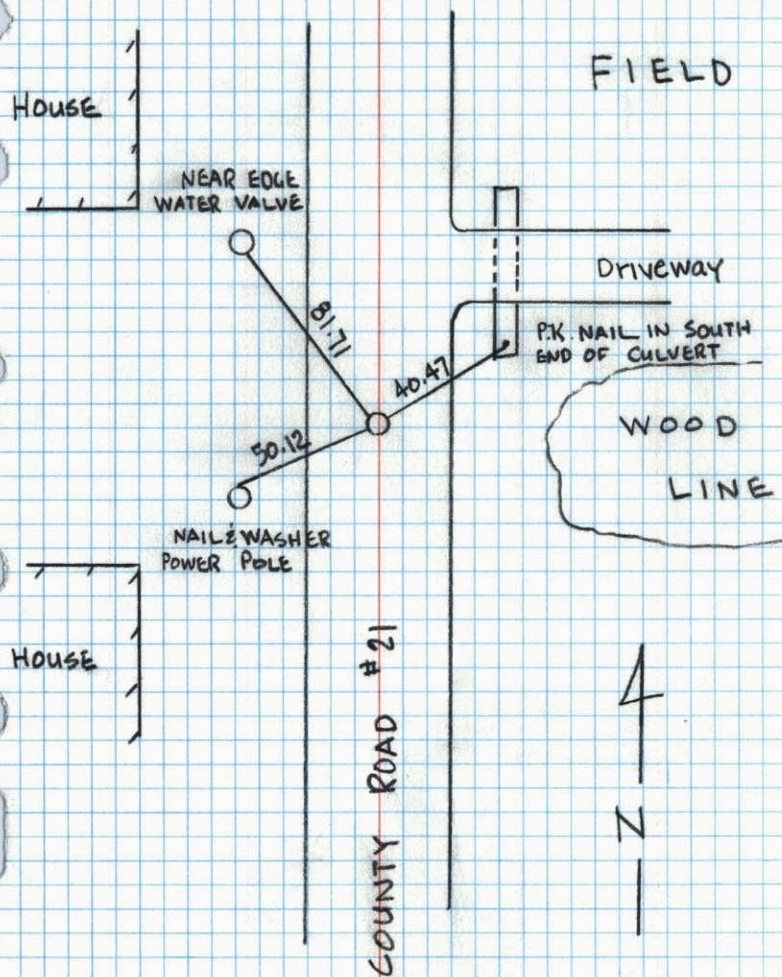
N.A.D.	1983	Co-ordinates
County	Project	Co-ordinates
Northing	148287.3379	# 78
Easting	558251.6516	# 78
State Plane Co-ordinates		
Y	_____	
X	_____	
Date	_____	

Revised date	Revised date	Revised date
7-7-86		
8-30-91		
6-18-96		
7-20-98		



SOUTHEAST COR. SEC. 14 TWN 31 R 22

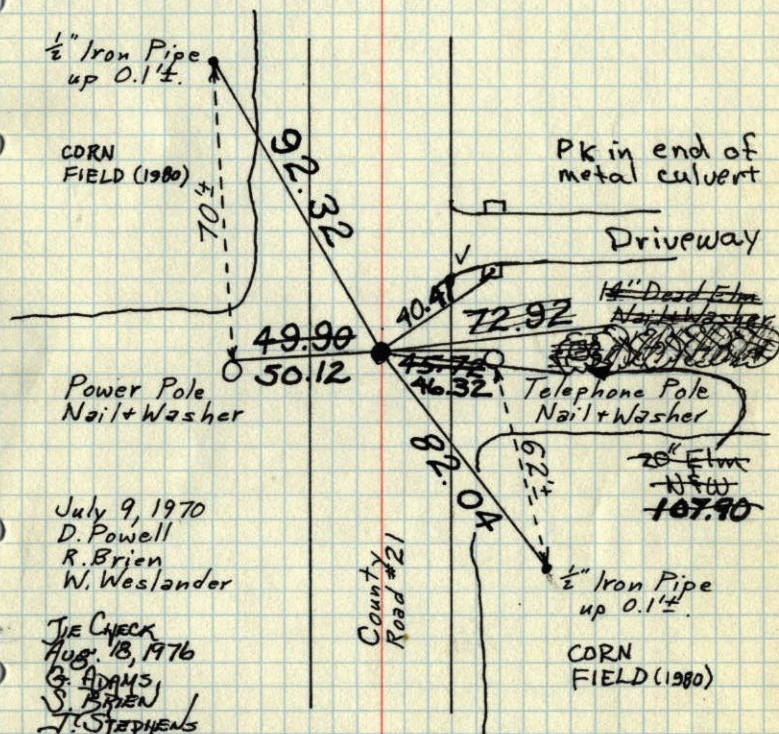
CHECKED AND RETIED CAST IRON MONUMENT

J.A. E. J.D.  
6-18-96

SE Cor. Sec. 14-T31-R22

Broken Concrete Mon. with Cast Iron Mon.  
on top removed by construction.

P.K. nail in place

July 9, 1970  
D. Powell  
R. Brien  
W. WeslanderTIE CHECK  
AUG. 18, 1976  
G. ADAMS  
S. BRIEN  
T. STEPHENSTIE CHECK (1/2" I.P.'s)  
7-25-80 GONE  
B. STEPHENS  
P. ROSS  
P. HORNBYTEMPERATURE CORRECTED  
AND HORIZONTALLY  
TAPED MEASUREMENTSROLAND W. ANDERSON  
COUNTY SURVEYOR  
ANOKA COUNTY, MINNESOTA

S.E. COR. SEC. 14-31-22

1970<sup>69</sup>

found ~~Gone~~ Monument top broken off  
down 0.2'

Set  $\frac{1}{2}$ " iron pipe on North face  
Set Cast Iron Monument flush on top  
of broken concrete.

PK nails 2.00'  
North + East.  
8/5/69

$\frac{1}{2}$  I.P. up 0.1'

Gone

12" Elm  
Nail & Washer

757.58

Tree line

P.P.  
Nail & Washer

49.98

49.90

COUNTY

T.P. Nail & Washer

end tree has  
14" been cut down  
70" Elm (Dead)  
Nail & Washer

T.P. N+W

Tree line

82.02<sup>+01</sup>

62<sup>±</sup>

$\frac{1}{2}$  I.P. up 0.1'

T.P. Nail & Washer

Removed  
C.I. Min.  
7/9/70  
D. Powell  
R. Brien  
W. Westlander  
#10-84

Retied 6-22-65  
M.P. Anderson  
John Dunlop

March 23, 1962

J.O. Oliver

M.D. Anderson

TEMPERATURE CORRECTED  
AND HORIZONTALLY  
TAPED MEASUREMENTS

Tie Check  
Aug. 5, 1969  
D. Powell  
R. Olson  
R. Brien

ROLAND W. ANDERSON  
COUNTY SURVEYOR  
ANOKA COUNTY, MINNESOTA

S.E. COR. SEC. 14-31-22

1969<sup>69</sup>

found ~~Gone~~ Monument top broken off  
down 0.2'

Set  $\frac{1}{2}$ " iron pipe on North face  
Set Cast Iron Monument flush on top  
of broken concrete.

PK nails 2.00'  
North + East.  
8/5/69

T.P. Nail & Washer

Gone

12" Elm  
Nail & Washer

757.58

Tree line

P.P.  
Nail & Washer

49.98

77.30

COUNTY

end tree has  
14" been cut down  
70" Elm (Dead)  
Nail & Washer

Tree line

T.P. Nail & Washer

March 23, 1962

J.O. Oliver

M.D. Anderson

TEMPERATURE CORRECTED  
AND HORIZONTALLY  
TAPED MEASUREMENTS

Tie Check  
Aug. 5, 1969  
D. Powell  
R. Olson  
R. Brien

Retied 6-22-65  
M.P. Anderson  
John Dunlop

ROLAND W. ANDERSON  
COUNTY SURVEYOR  
ANOKA COUNTY, MINNESOTA

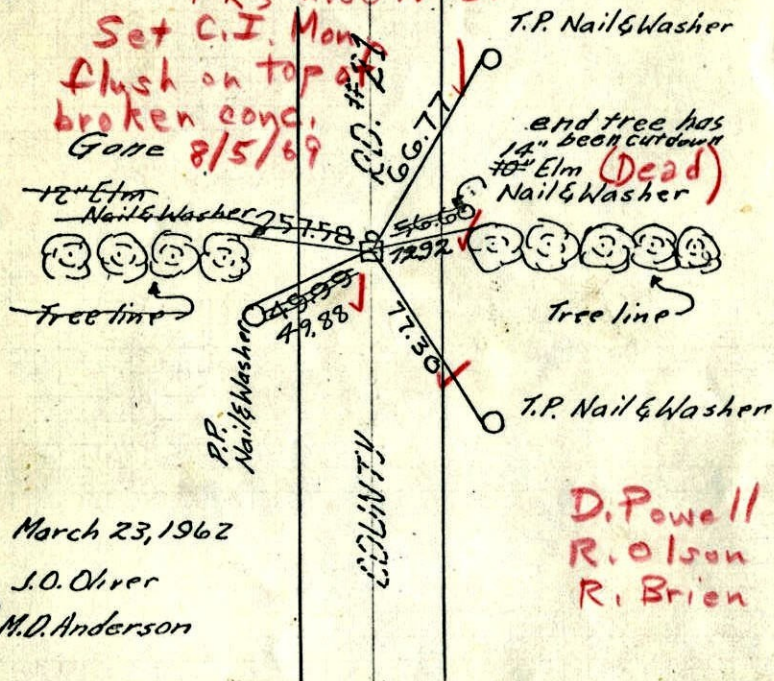
S.E. COR. Sec. 14-31-22 **1969** 69

found Conc. Monument top broken off  
down 0.2'

Set 1/2" iron pipe on North face

PK's 2.00' N+E.

Set C.I. Mon.  
flush on top of  
broken conc.  
Gone 8/5/69



March 23, 1962

J.O. Oliver

M.D. Anderson

TEMPERATURE CORRECTED  
AND HORIZONTALLY  
TAPED MEASUREMENTS

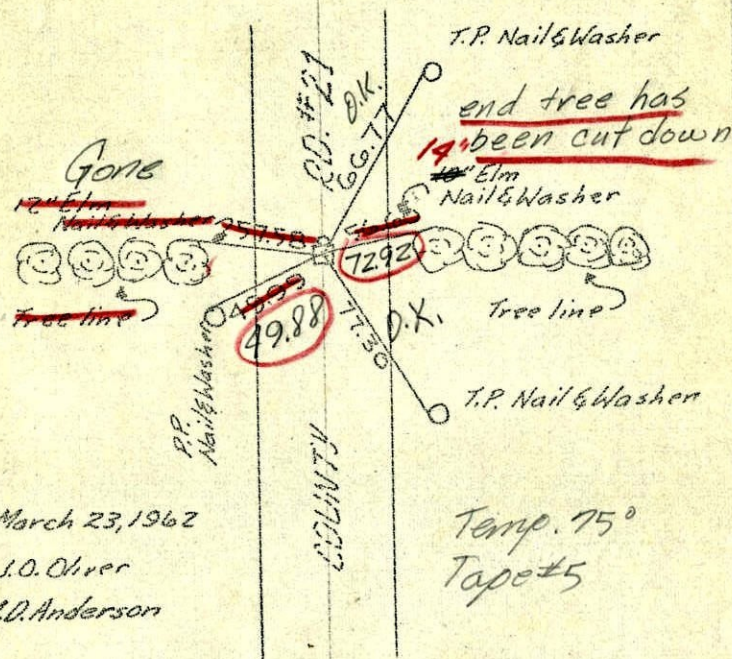
Retied 6-22-65  
M.P. Anderson  
John Dunlop

ROLAND W. ANDERSON  
COUNTY SURVEYOR  
ANOKA COUNTY, MINNESOTA

S.E. COR. Sec. 14-31-22 **1965** 42

found Conc. Monument top broken off  
down 0.2'

Set 1/2" iron pipe on North face



March 23, 1962

J.O. Oliver

M.D. Anderson

Temp. 75°  
Tape #5

TEMPERATURE CORRECTED  
AND HORIZONTALLY  
TAPED MEASUREMENTS

Tie check  
June 22, 1965  
M.D. Anderson  
J. Dunlop

ROLAND W. ANDERSON  
COUNTY SURVEYOR  
ANOKA COUNTY, MINNESOTA

