

CERTIFICATE OF LOCATION OF GOVERNMENT CORNER

County of Anoka

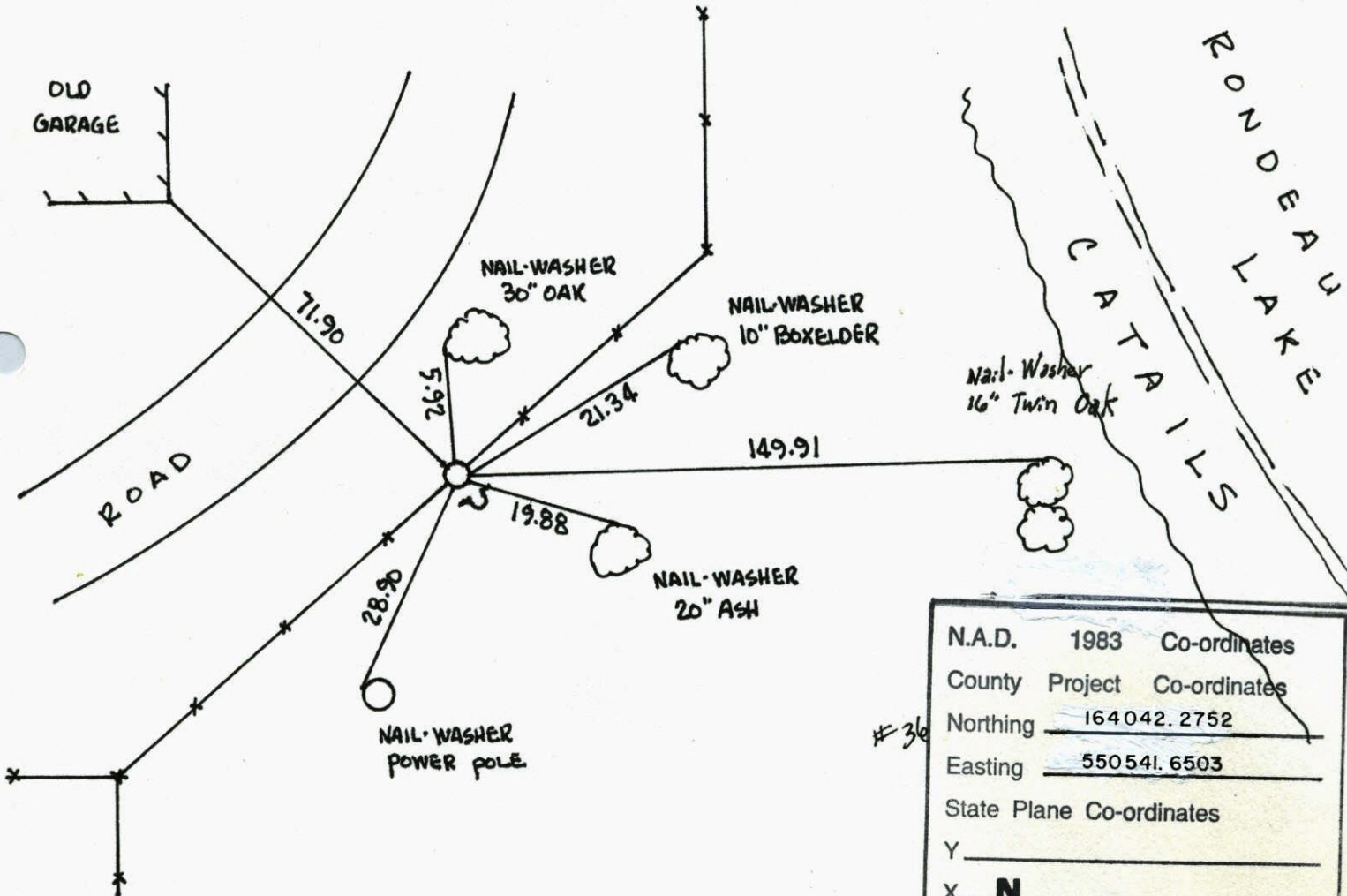
State of Minnesota

NORTH 1/4 Corner of Sec. 3 Township 31 Range 22

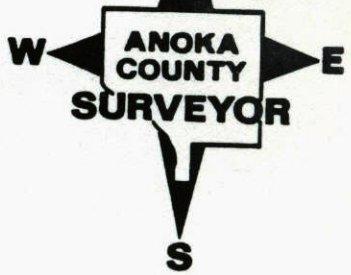
I hereby certify that on the day of MAY , 19 63, I found the described corner which was evidenced by 3/4" IRON PIPE INSIDE 3" IRON PIPE

and I further certify that to perpetuate the location of said corner, I did, at the exact location thereof, place a permanent marker consisting of CAST IRON MONUMENT
 SIGN & POST ON S.E. SIDE

which reference or witness monuments are located in the manner following:

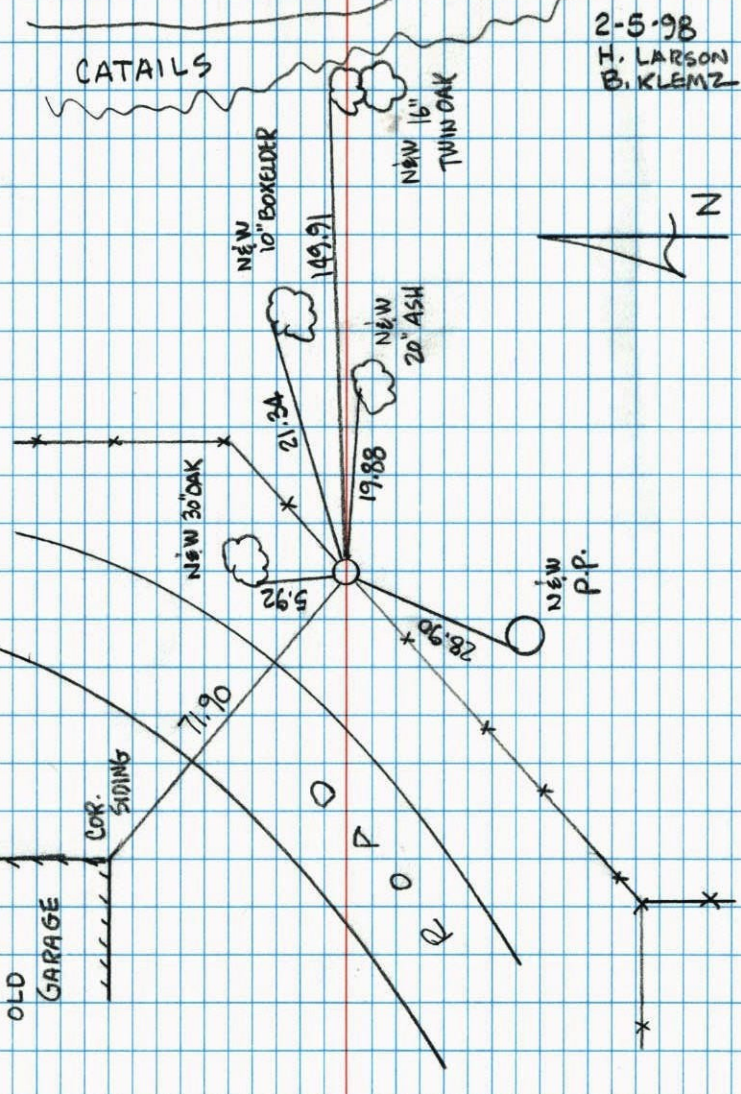


N.A.D.	1983	Co-ordinates
County	Project	Co-ordinates
Northing		<u>164042.2752</u>
Easting		<u>550541.6503</u>
State Plane Co-ordinates		
Y		_____
X		<u>N</u> _____
Date _____		



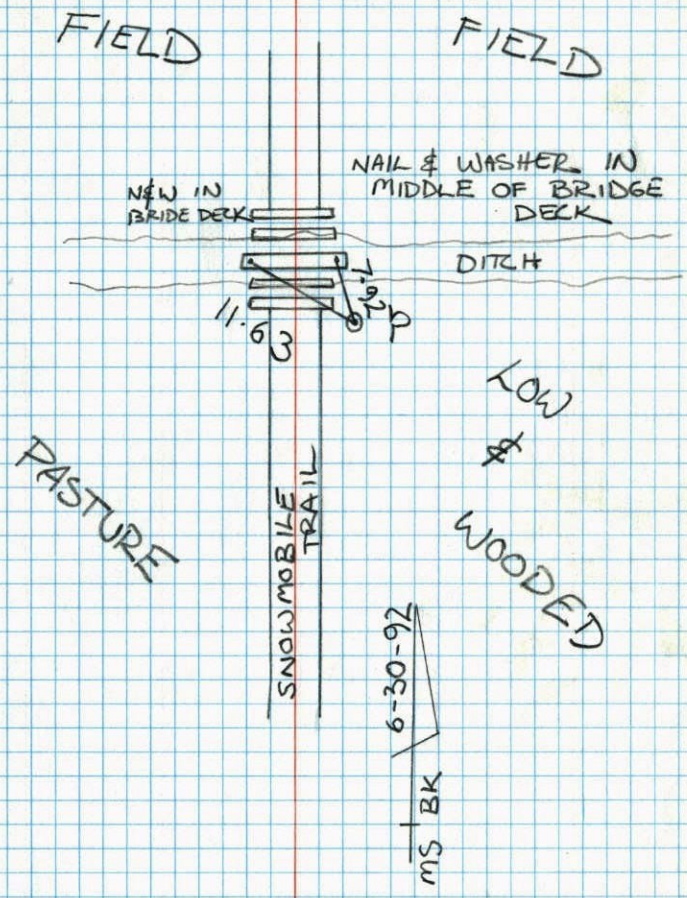
Revised date	Revised date	Revised date
<u>6-18-65</u>	<u>6-12-96</u>	
<u>8-11-69</u>	<u>2-5-98</u>	
<u>7-6-73</u>		
<u>5-13-77</u>		
<u>7-18-86</u>		
<u>3-6-89</u>		
<u>6-27-91</u>		

NORTH 1/4 COR SEC 3 T 31 R 22
RETIED CAST IRON MONUMENT
SIGN & POST ON S.E. SIDE



2-5-98
H. LARSON
B. KLEMMZ

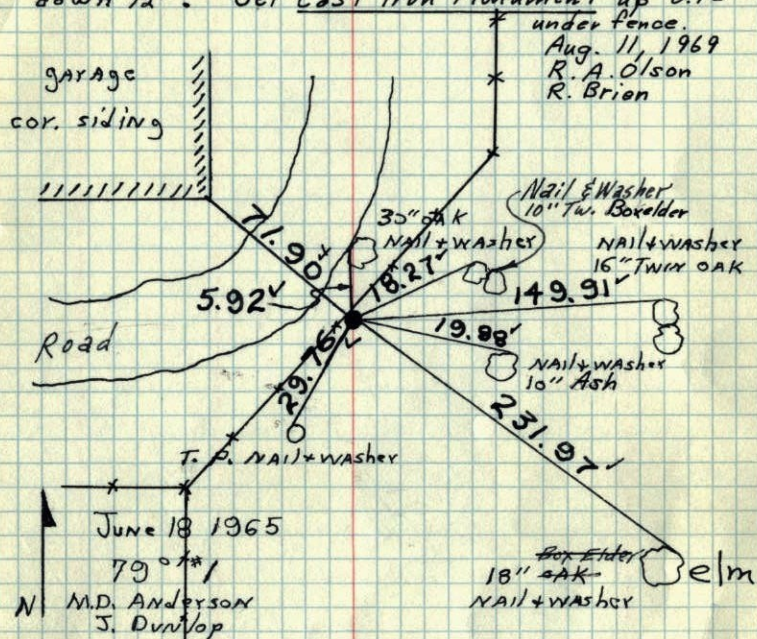
RETIE OF NORTHWEST COR S3 T 31 R 22
CAST IRON MONUMENT
SIGN & POST ON EAST SIDE



MS BK
6-30-92

N¹/₄ Cor. Sec. 3 T31 R22

Retied cor. from our own ties of May 1963

Tied after construction 2 1/2" (3") iron pipe
down 1/2". Set Cast Iron Monument up 0.1' under fence.

TIE CHECK
MAY 15, 1977
B. SPANNERUD
D. DAHA
S. BRIEN

TIE CHECK
8-1-80
B. STEPHENS
P. ROSS
P. HORNEY

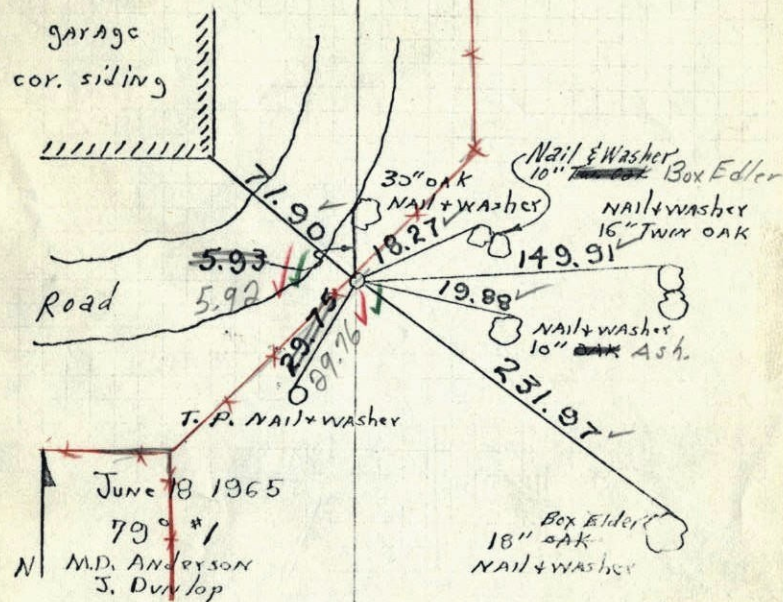
Tie Check
July 6, 1973
B. Olson
D. Brien
D. Farmer

TEMPERATURE CORRECTED
AND HORIZONTALLY
TAPED MEASUREMENTS

ROLAND W. ANDERSON
COUNTY SURVEYOR
ANOKA COUNTY, MINNESOTA

N¹/₄ Cor. Sec. 3 T31 R22

Retied cor. from our own ties of May 1963

Tied after construction 2 1/2" (3") iron pipe
down 1/2".

Set C.I. up 1' under Fence.

8-11-69
Tape #5 ✓
Temp 80 ✓
R. A. Olson
R. Brien

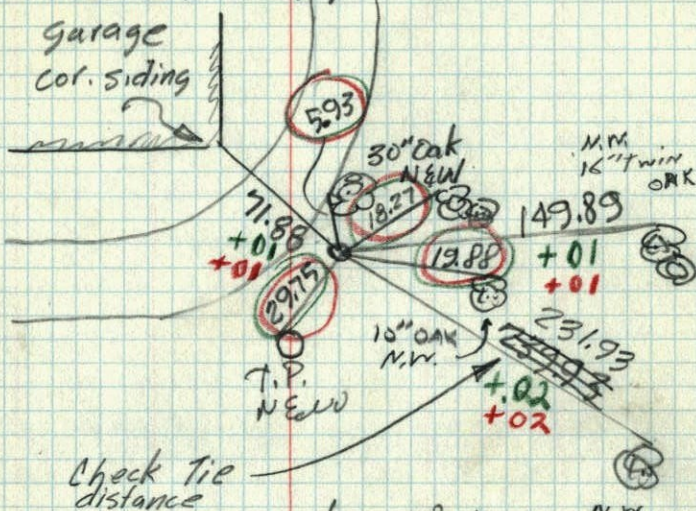
TEMPERATURE CORRECTED
AND HORIZONTALLY
TAPED MEASUREMENTS

ROLAND W. ANDERSON
COUNTY SURVEYOR
ANOKA COUNTY, MINNESOTA

1965
N 1/4 Cor. Sec. 3-T31-R22

Retied cor from our own ties
of May 1963

Tied after construction
2 1/2" (3") iron pipe down 1/2'



June 18, 1965

M.D. Anderson

J. Dunlop

Temp. 79°

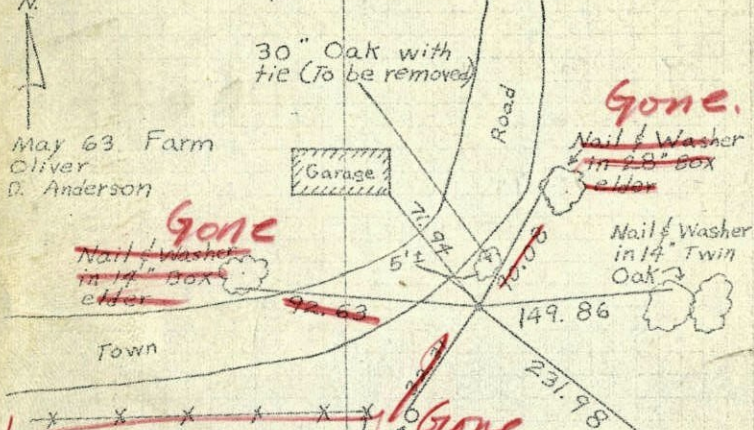
Tape #1

N.W.
18" B.E.

1965
N 1/4 Cor. Sec. 3, T31, R22

Found 3" Iron Pipe Flush 4' South of Oak
Witness tree (Corner and tree described
by Occupant of farm just N.W. of Corner
as being used by many Surveyors) Corner
will be removed by Township road construction.

3/4" Pinched Iron pipe inside 3" Pipe.



found I.P. from
ties ~ fits ties
good

TEMPERATURE-CORRECTED
AND HORIZONTALLY
TAPED MEASUREMENTS

New Ties
taken

June 18, 1965

Road Const. fini.

M.D.A. ~ J.D.

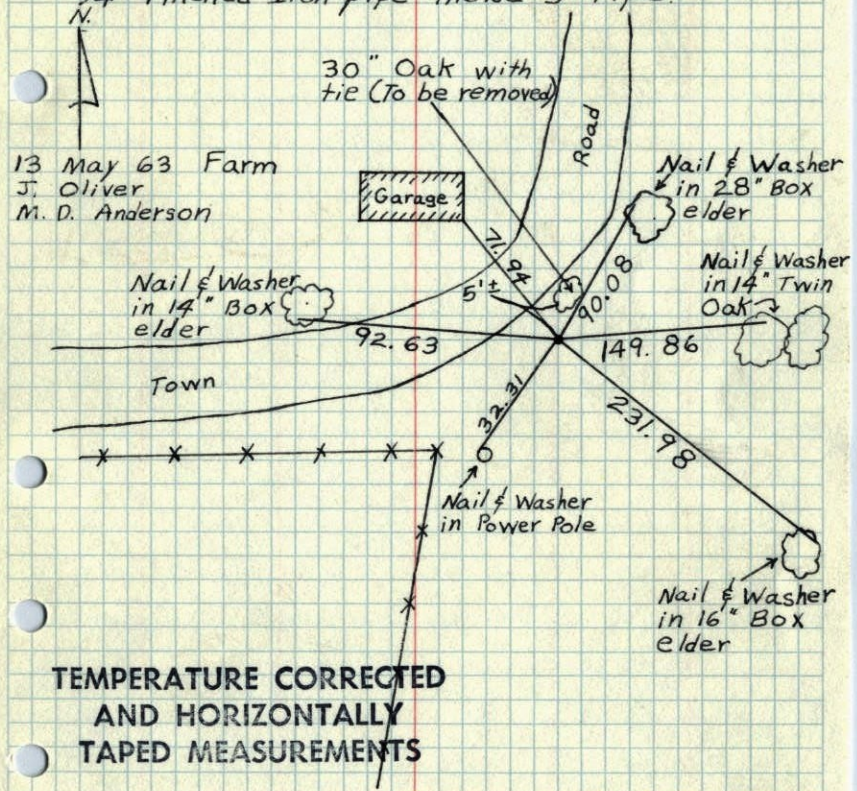
ROLAND W. ANDERSON
COUNTY SURVEYOR
ANOKA COUNTY, MINNESOTA

1963

1/4 Cor. Sec. 3, T31, R22

Found 3" Iron Pipe Flush 4' South of Oak Witness tree (Corner and tree described by Occupant of farm just N.W. of Corner as being used by many Surveyors) Corner will be removed by Township road Construction.

3/4" Pinched Iron pipe inside 3" Pipe.



TEMPERATURE CORRECTED
AND HORIZONTALLY
TAPED MEASUREMENTS

ROLAND W. ANDERSON
COUNTY SURVEYOR
ANOKA COUNTY, MINNESOTA

1963

1/4 Cor. Sec. 3, T31, R22

Found 3" I.P. Flush 4' So. of Oak Witness tree (Corner and Tree described by occupant of farm just NW of corner as being used by many Surveyors)

Corner will be removed by Twp. road Const. 3/4" P.I.P. inside 3" Pipe.

