

CERTIFICATE OF LOCATION OF GOVERNMENT CORNER

County of Anoka

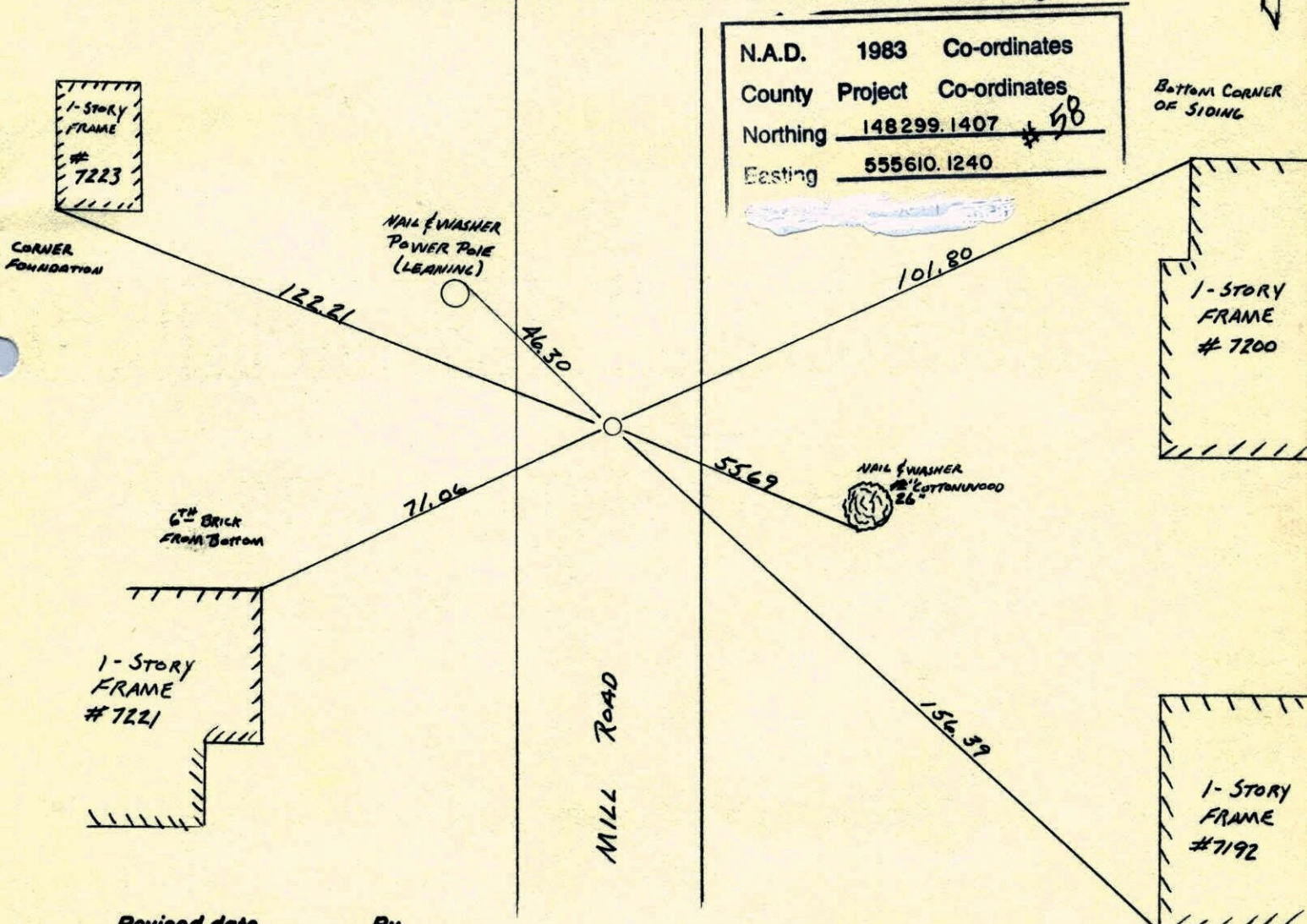
State of Minnesota

SOUTH QUARTER Corner of Sec. 14 Township 31 Range 22

I hereby certify that on the 23rd day of MARCH, 1962, I found the described corner which was evidenced by CONCRETE

and I further certify that to perpetuate the location of said corner, I did, at the exact location thereof, place a permanent marker consisting of CAST IRON MONUMENT

which reference or witness monuments are located in the manner following:



N.A.D.	1983	Co-ordinates
County	Project	Co-ordinates
Northing	148299.1407	* 98
Easting	555610.1240	

Revised date
10-7-86
8-30-91
6-18-96
2-25-98

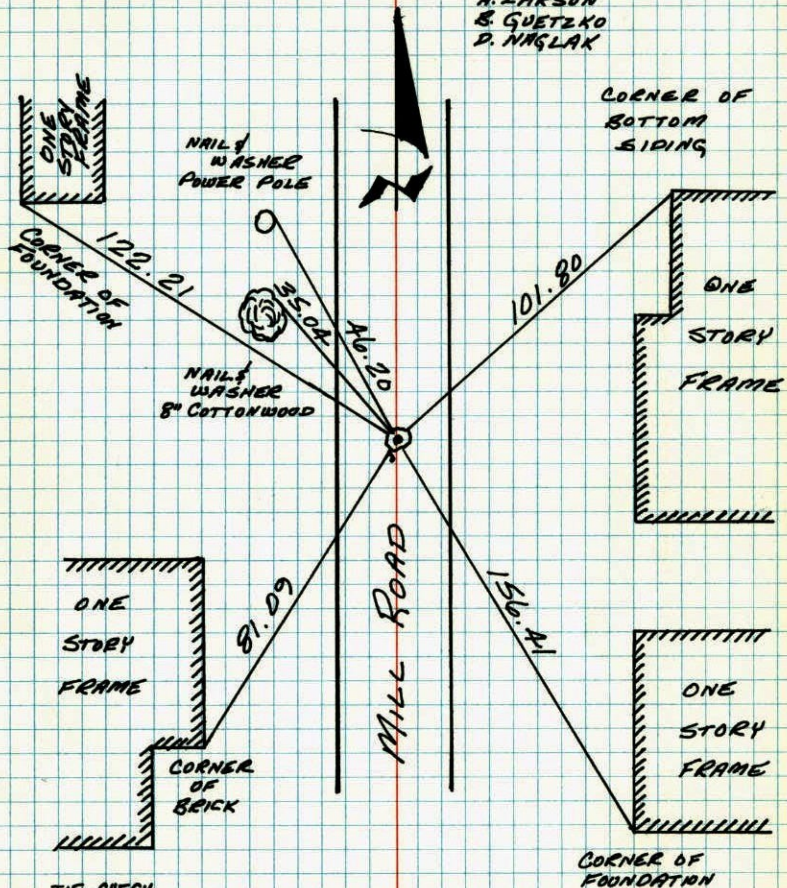
By
H. LARSON

RESET AFTER CONSTRUCTION

Minnesota State Plane Coordinates
 South Zone
 Y _____ X _____
 _____ , _____
 County Surveyor Date
 Registered Land Surveyor No. _____

S¹/₄ CORNER SECTION 14-T31-R22

RAISED CAST IRON MONUMENT SET IN 1969 AFTER
ROAD CONSTRUCTION. CAST IRON FLUSH WITH
PK'S 2.00' NORTH AND EAST. 25 APR 80
H. LARSON
B. GUETZKO
D. NAGLAK



TIE CHECK
7-30-80
J. STEPHENS
P. ROSS
P. HORNBY

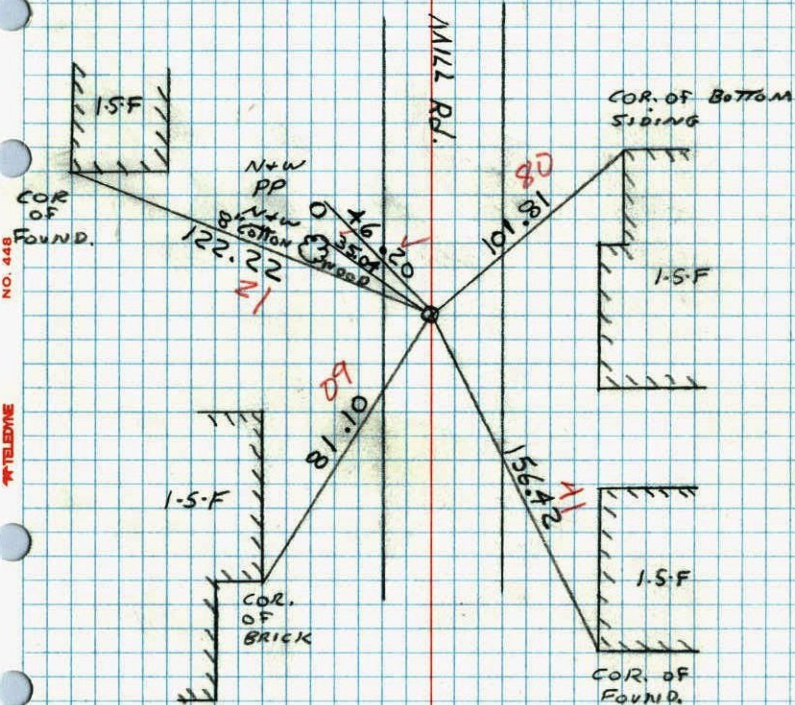
TEMPERATURE CORRECTED
AND HORIZONTALLY
TAPED MEASUREMENTS

ROLAND W. ANDERSON
COUNTY SURVEYOR
ANOKA COUNTY, MINNESOTA

S¹/₄ COR. SECTION 14 T31R22

RAISED CAST IRON MONUMENT SET IN
1969 AFTER ROAD CONSTRUCTION
C.I. FLUSH WITH PK'S 2.00' N. + E.

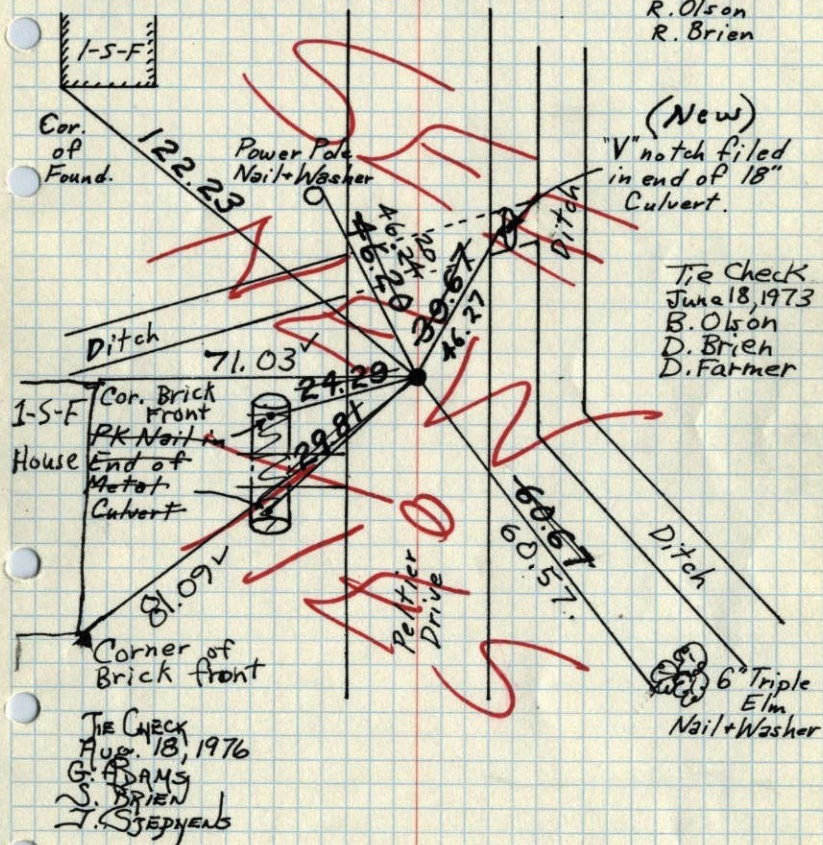
200' ±
4-25-80
H. LARSON
B. GUETZKO
D. NAGLAK



1/4 Cor. Sec. 14-T31-R22

Set Cast Iron Monument down 0.4'± on top
of broken Concrete Monument.

Replaced Cast Iron Aft. Const. August 5, 1969
5-25-78 H. Larson, B. Guetzko D. Powell
R. Olson
R. Brien



TEMPERATURE CORRECTED
AND HORIZONTALLY
TAPED MEASUREMENTS

ROLAND W. ANDERSON
COUNTY SURVEYOR
ANOKA COUNTY, MINNESOTA

(New)
"V" notch filed
in end of 18"
Culvert.

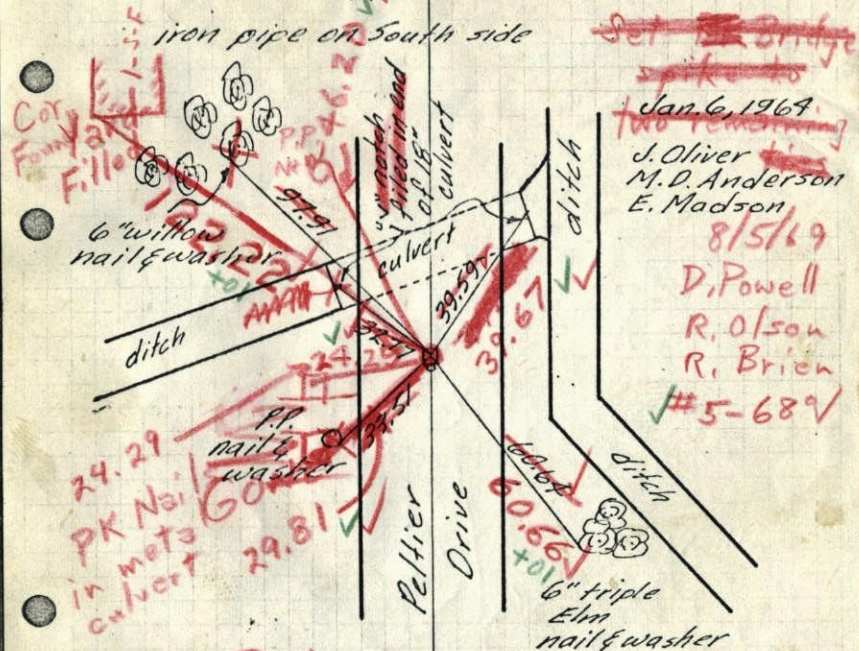
Tie Check
June 18, 1973
B. Olson
D. Brien
D. Farmer

TIE CHECK
AUG. 18, 1976
G. ADAMS
S. BRIEN
J. STEPHENS

1/4 Cor. Sec. 14-T31-R22

Retied Conc. monument because
of Ditch Construction

Conc. monument down 0.5'± with top
broken off



Set C.I. Mon. down 0.4'±
on top of Conc. Mon.

TEMPERATURE CORRECTED
AND HORIZONTALLY
TAPED MEASUREMENTS

Retied 7-9-65
M. D. Anderson
J. Dunlap

ROLAND W. ANDERSON
COUNTY SURVEYOR
ANOKA COUNTY, MINNESOTA

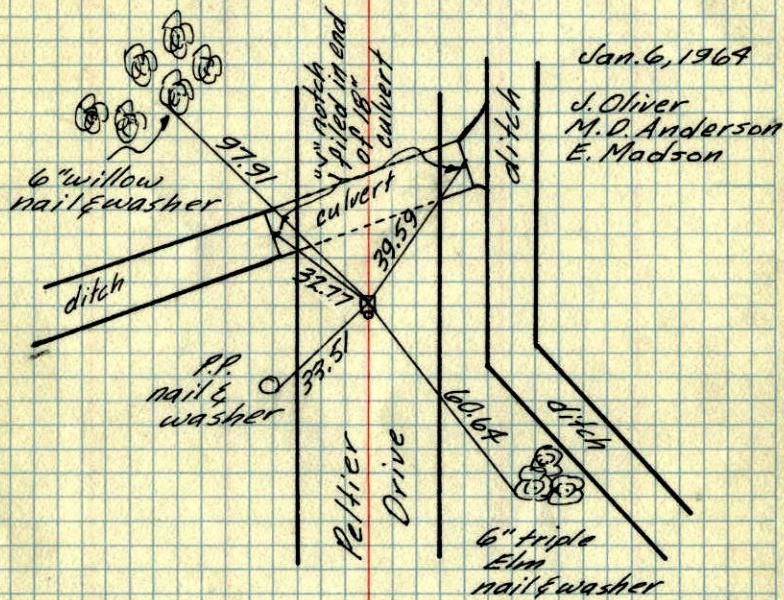
1969
Set Bridge
spikes
Jan 6, 1969
two remaining
J. Oliver
M. D. Anderson
E. Madson
8/5/69
D. Powell
R. Olson
R. Brien
#5-68V

1965 70
S 1/4 Cor. Sec. 14-T31-R22

Retied Conc. monument because of Ditch Construction

Conc. monument down 0.5' with top broken off

iron pipe on South side



TEMPERATURE CORRECTED
AND HORIZONTALLY
TAPED MEASUREMENTS

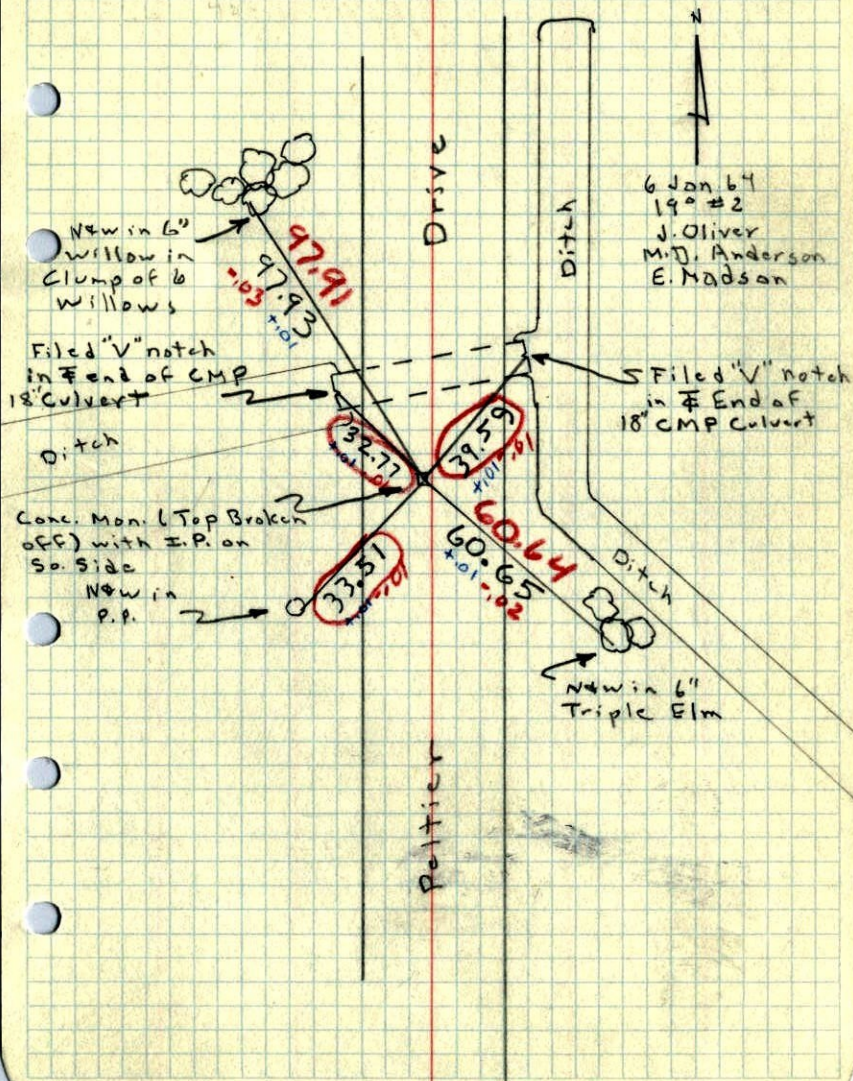
Retied 7-9-65
M.D. Anderson
J. Dunlop

ROLAND W. ANDERSON
COUNTY SURVEYOR
ANOKA COUNTY, MINNESOTA

1964
So 1/4 Cor. Sec. 14, T31, R22

ook Additional Ties to Conc. Mon

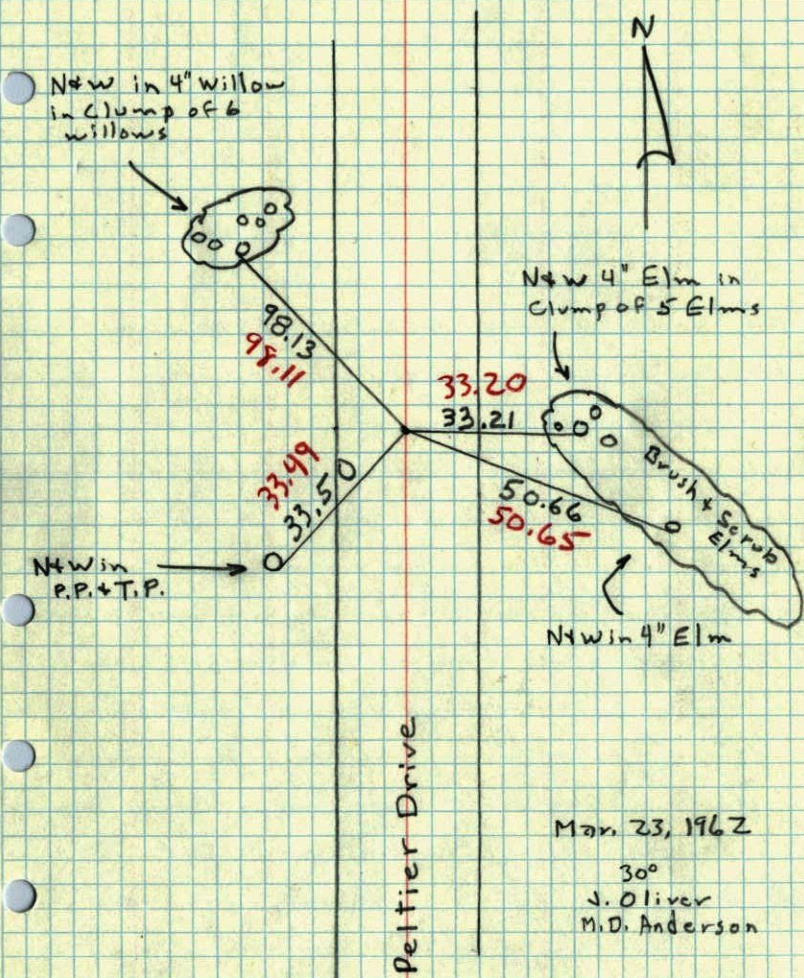
(down 0.5') because of Ditch Construction



S 1/4 Cor. Sec. 14, T31, R22

1962

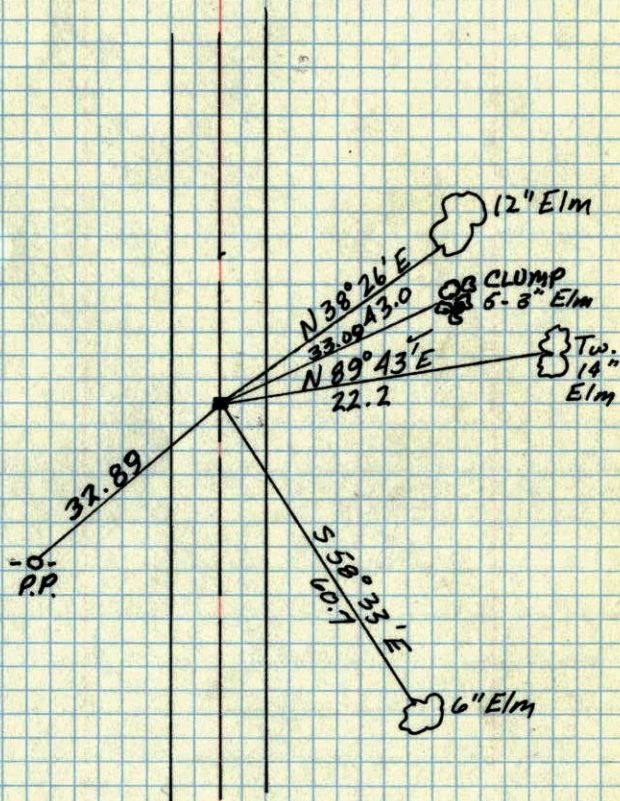
Found Conc. Mon. with Top Broken off, down
6" and 3/4" I.P. on So. Side Mon.



S 1/4 SEC. 14, T31, R22

1945

Conc. Mon. Down 6"
(Iron)-Carley



Minor W. Carley
Dec 21, 1967

Oct 9, 1945
CARTWRIGHT