

CERTIFICATE OF LOCATION OF GOVERNMENT CORNER

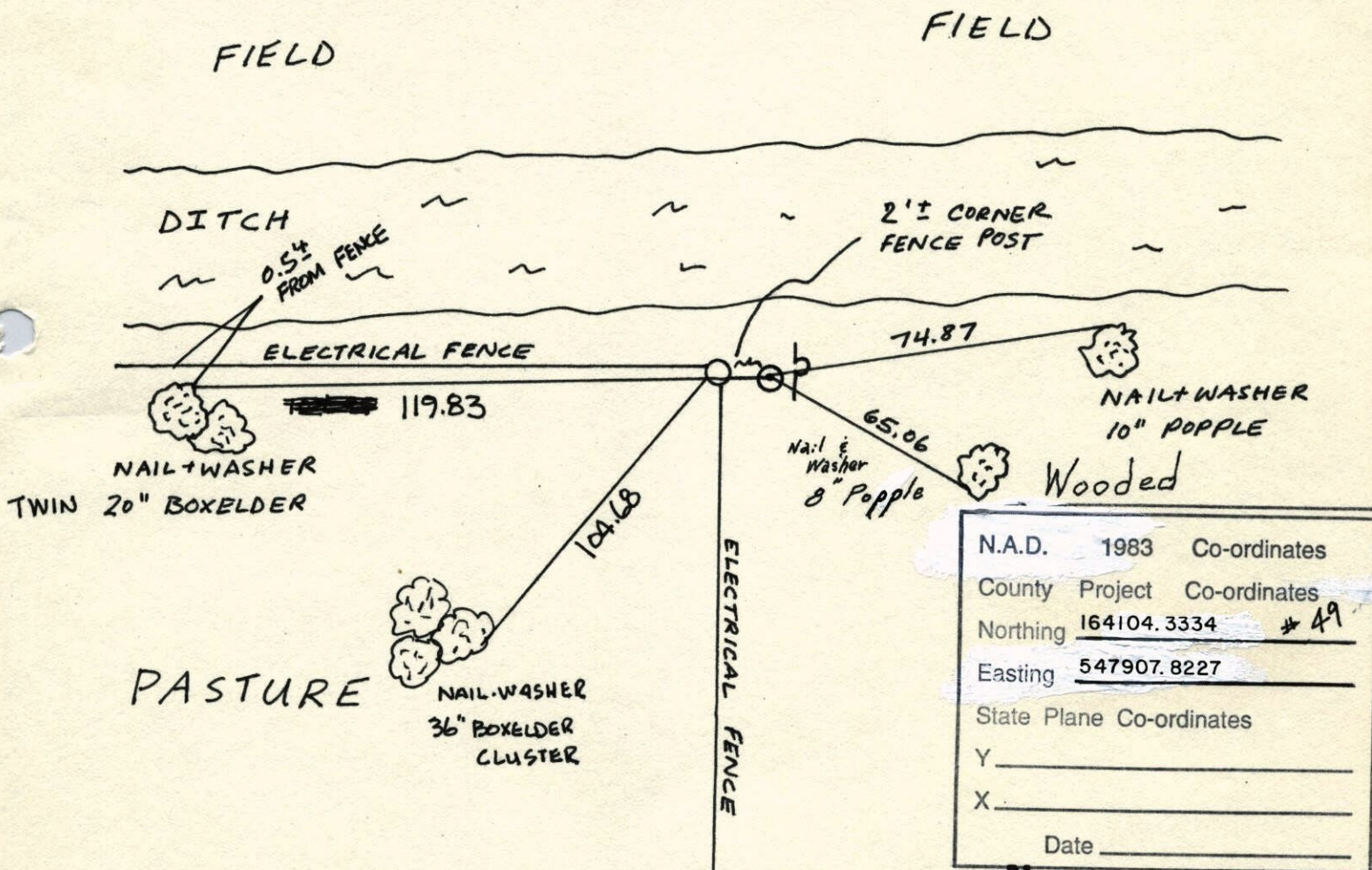
County of Anoka State of Minnesota

NORTHWEST Corner of Sec. 3 Township 31 Range 22

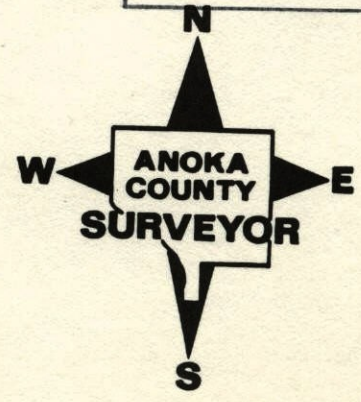
I hereby certify that on the 3 day of FEBRUARY, 19 64, I found the described corner which was evidenced by 1/2 IRON PIPE

and I further certify that to perpetuate the location of said corner, I did, at the exact location thereof, place a permanent marker consisting of CAST IRON MONUMENT SIGN + POST
EAST SIDE

which reference or witness monuments are located in the manner following:



N.A.D.	1983	Co-ordinates
County	Project	Co-ordinates
Northing	164104.3334	# 49
Easting	547907.8227	
State Plane Co-ordinates		
Y	_____	
X	_____	
Date	_____	



Revised date	Revised date	Revised date
6-30-92		
11-17-92		
6/20-96		
2-5-98		

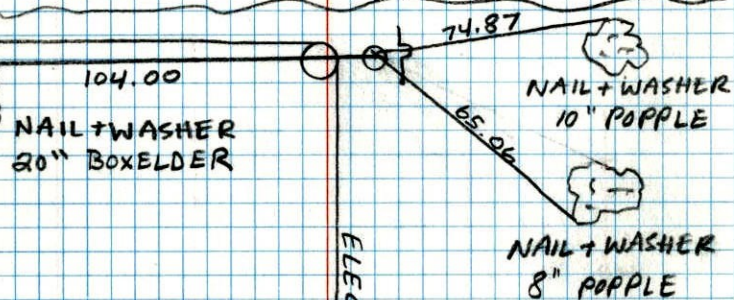
NW Sec. 3 TW. 31 R. 22

CAST IRON MONUMENT RETIED
SIGN + POST EAST SIDE

FIELD

FIELD

DITCH



PASTURE

ELECTRICAL FENCE

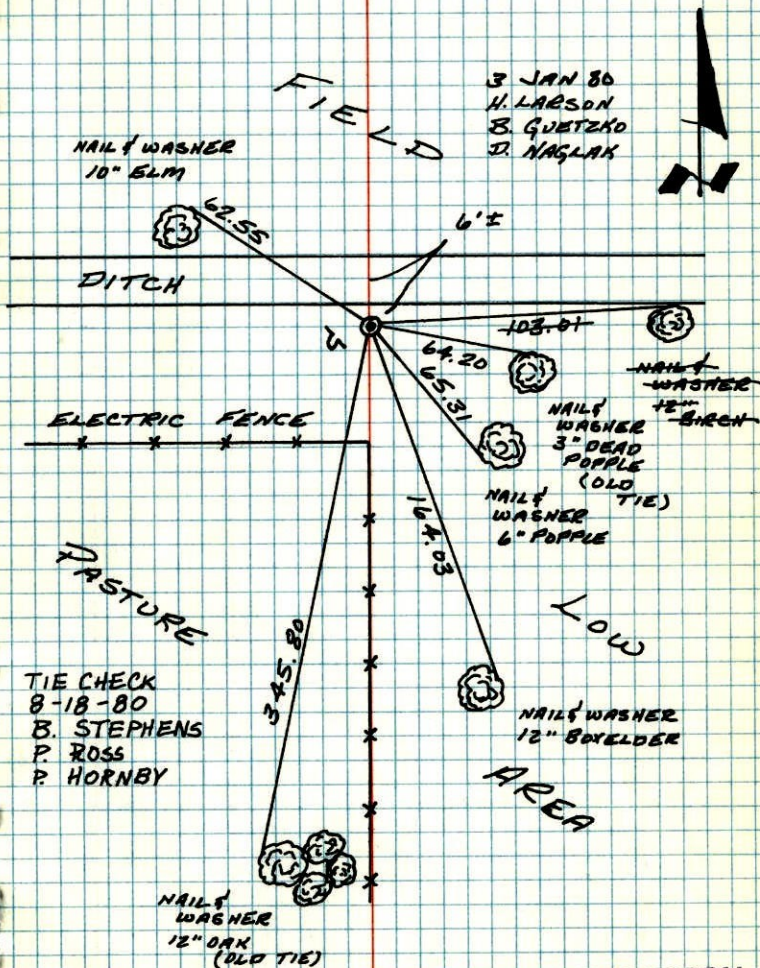
WOODED

N

JASON ANDERSON
JONATHAN DOLL

6-20-96

N.W. CORNER SECTION 3 - T31 - R22

RETIED CAST IRON MONUMENT SET IN 1969.
CAST IRON FLUSH WITH SIGN AND POST ON S.W.
SIDE.TIE CHECK
8-18-80
B. STEPHENS
P. ROSS
P. HORNBYTEMPERATURE CORRECTED
AND HORIZONTALLY
TAPED MEASUREMENTSROLAND W. ANDERSON
COUNTY SURVEYOR
ANOKA COUNTY, MINNESOTA

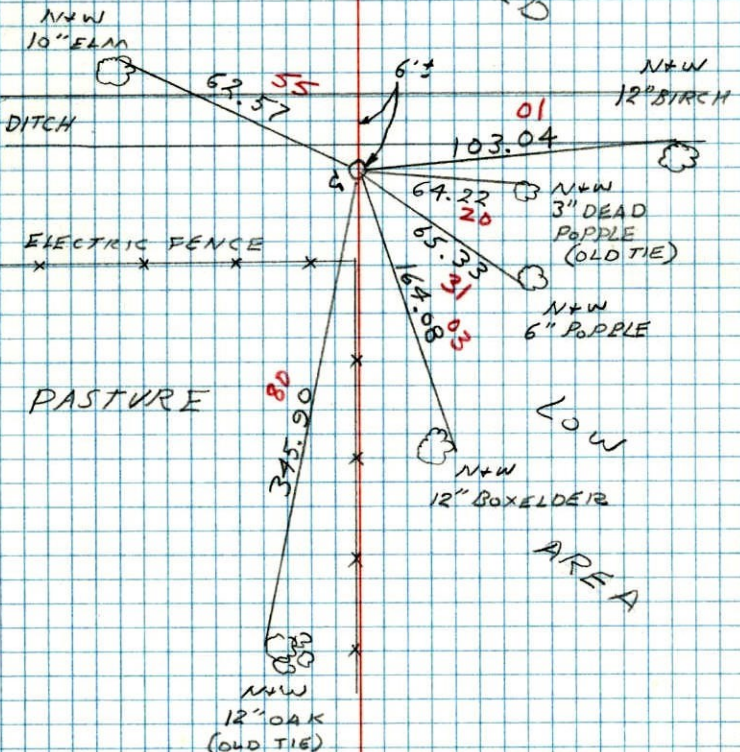
N.W. COR. SECTION 3 T31 R22

RETIRED CAST IRON MONUMENT SET
IN 1969. CAST IRON FLUSH WITH
SIGN AND POST ON SW SIDE

FIELD

FIELD

1-3-80
#1 20°
W. LARSON
B. GUTZKO
D. INAGLAK



N.W. Cor. Sec. 3, T.31, R.22

Found $\frac{3}{4}$ " iron pipe (pinched top)
down 0.1' along side burned off
wood post.
Set Cast Iron Monument up 0.1'±.
Steel post up 4.0'± on SW side.
8/12/69

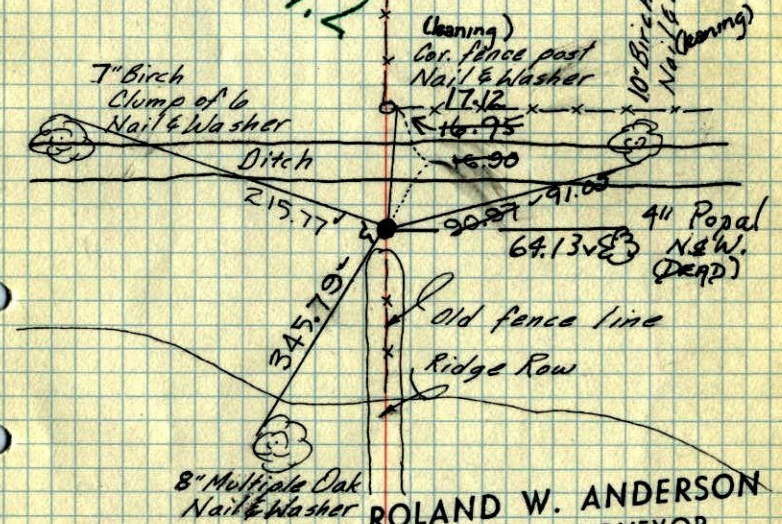
Feb. 3, 1964

J. Oliver
E. Madson
M. Nordin

Tie Check
Aug. 12, 1969
R. A. Olson
R. Brien

Tie Check
July 13, 1973
B. Olson
D. Brien
D. Farmer

SEE
NEW
TIES
H.L.S.



Wet - 1965

TIE CHECK
MAY 13, 1977
R. SAJNERUD
D. Brien
S. Brien

ROLAND W. ANDERSON
COUNTY SURVEYOR
ANOKA COUNTY, MINNESOTA

TEMPERATURE CORRECTED
AND HORIZONTALLY
TAPED MEASUREMENTS

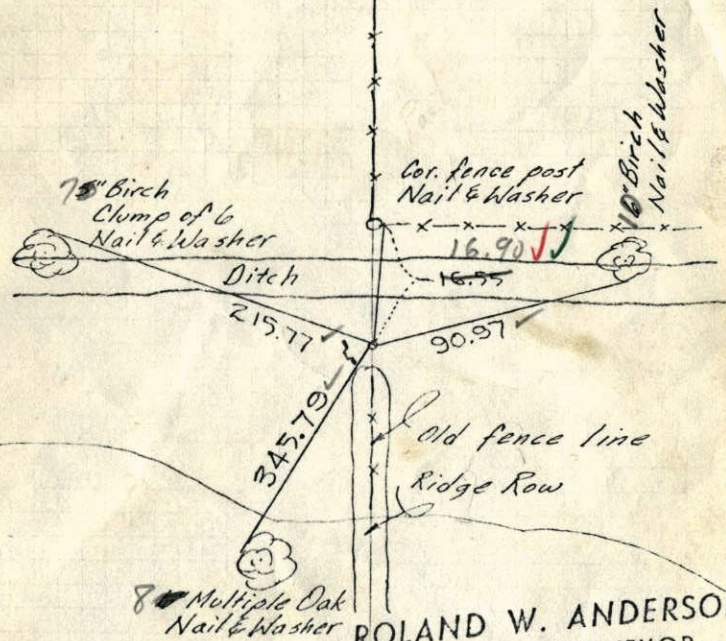
1969
N.W. Cor. Sec. 3, T.31, R.22

Found 3/4" Iron pipe (pinched top)
down 0.1' along side burned off
wood post.

Set C.I. up 0.1' with Steel Post up 4.0'

Feb. 5, 1964

J. Oliver
E. Madson
M. Nordin



ROLAND W. ANDERSON
COUNTY SURVEYOR
ANOKA COUNTY, MINNESOTA

TEMPERATURE CORRECTED
AND HORIZONTALLY
TAPED MEASUREMENTS

Wet - 1965

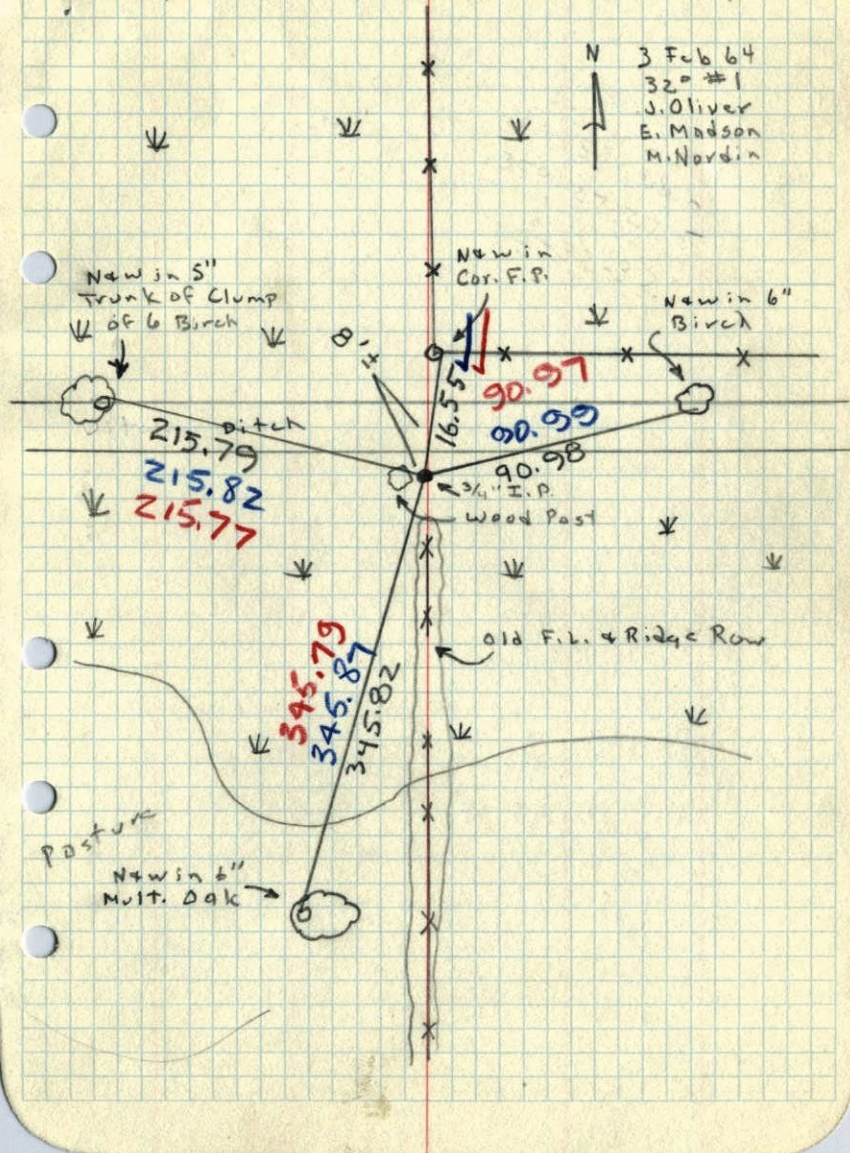
8-10-69
Tape #5 ✓
90° ✓

NW

345-82
Cor. Sec. 3, T.31, R.22

Found old 3/4" Pinched Iron Pipe down 0.1'
along East Side of Burned off wood post.

N 3 Feb 64
320 #1
J. Oliver
E. Madson
M. Nordin



Pasture