

CERTIFICATE OF LOCATION OF GOVERNMENT CORNER

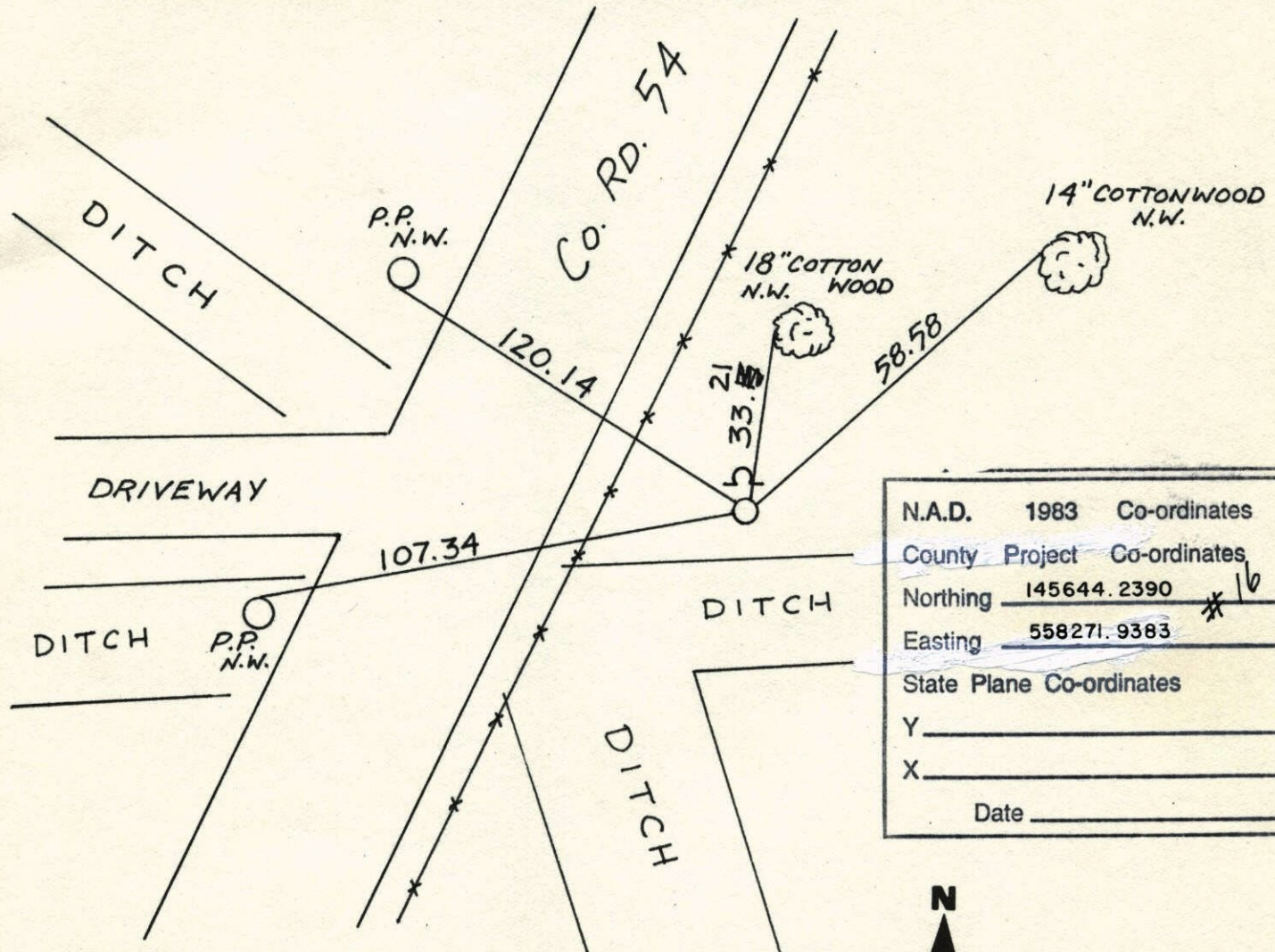
County of Anoka State of Minnesota

EAST QTR. Corner of Sec. 23 Township 31 Range 22

I hereby certify that on the 26 day of SEPT., 19 72, I found the described corner which was evidenced by CONCRETE MON.

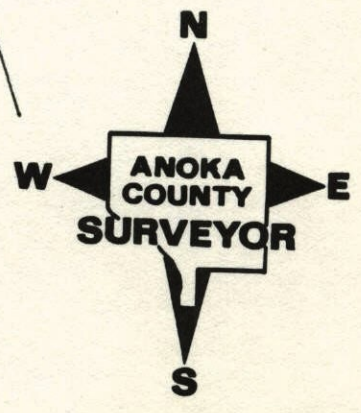
and I further certify that to perpetuate the location of said corner, I did, at the exact location thereof, place a permanent marker consisting of CAST IRON SIGN AND POST ON NORTH SIDE

which reference or witness monuments are located in the manner following:



N.A.D.	1983	Co-ordinates
County	Project	Co-ordinates
Northing	145644.2390	* 16
Easting	558271.9383	
State Plane Co-ordinates		
Y	_____	
X	_____	
Date	_____	

Revised date	Revised date	Revised date
8-30-91		
10-26-94		
6-24-96		
2-3-98		



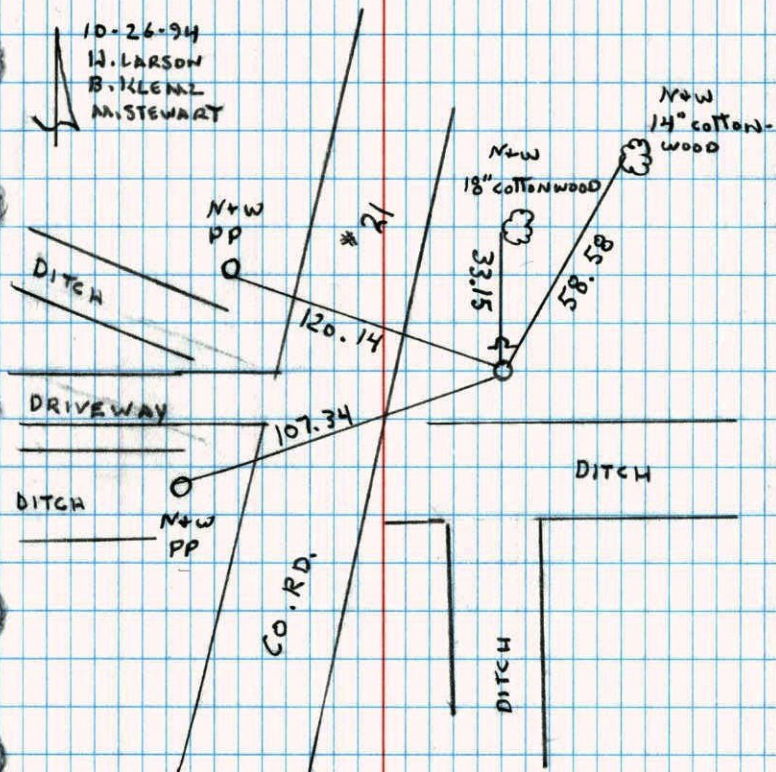
E 1/4 CORNER SECTION 23 T31 R22

RESET CAST IRON AFTER DITCH CONSTRUCTION

SET FROM CONST. TIES

SIGN + POST ON NORTH SIDE

10-26-94
H. LARSON
B. KLEMM
M. STEWART



NO. 446

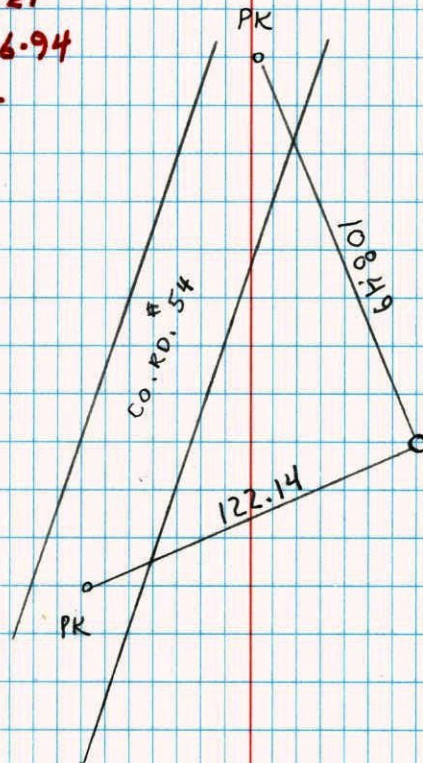
TELEPHONE

CONSTRUCTION TIES

E 1/4 COR. SECTION 23 T31 R22

TIED AND REMOVED FOR CONSTRUCTION

RESET
10-26-94
HL



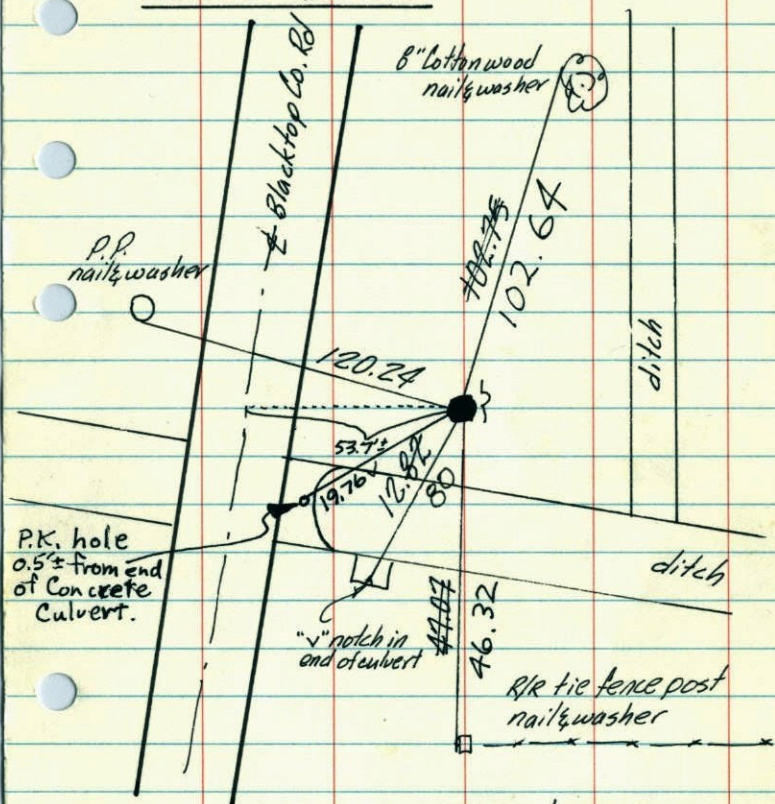
NO. 446

TELEPHONE

9-9-94
H. LARSON
B. KLEMM
M. STEWART

E. 1/4 Cor. Sec. 23-T31-R22

Conc. Monument steel post on E. side
 CAST IRON MONUMENT



TIE CHECK
 Aug. 18, 1976
 G. ADAMS
 S. BIRN
 J. STEPHENS

Sept. 26, 1972
 M.D. Anderson +
 H.J. Larson +

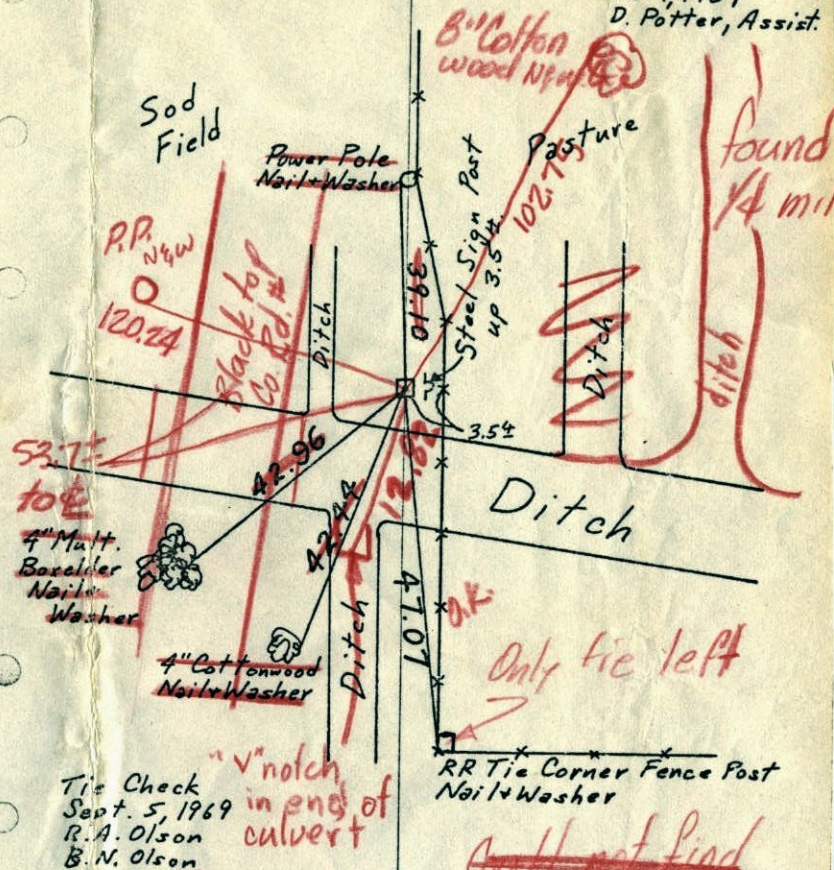
TEMPERATURE CORRECTED
 AND HORIZONTALLY
 TAPED MEASUREMENTS
 ROLAND W. ANDERSON
 COUNTY SURVEYOR
 ANOKA COUNTY, MINNESOTA

REDRAW 1972 90

E. 1/4 Cor. Sec. 23-T31-R22

Concrete Monument up 0.4'

Oct. 1959
 D. Potter, Assist.



Tie Check
 Sept. 5, 1969
 R.A. Olson
 B.N. Olson

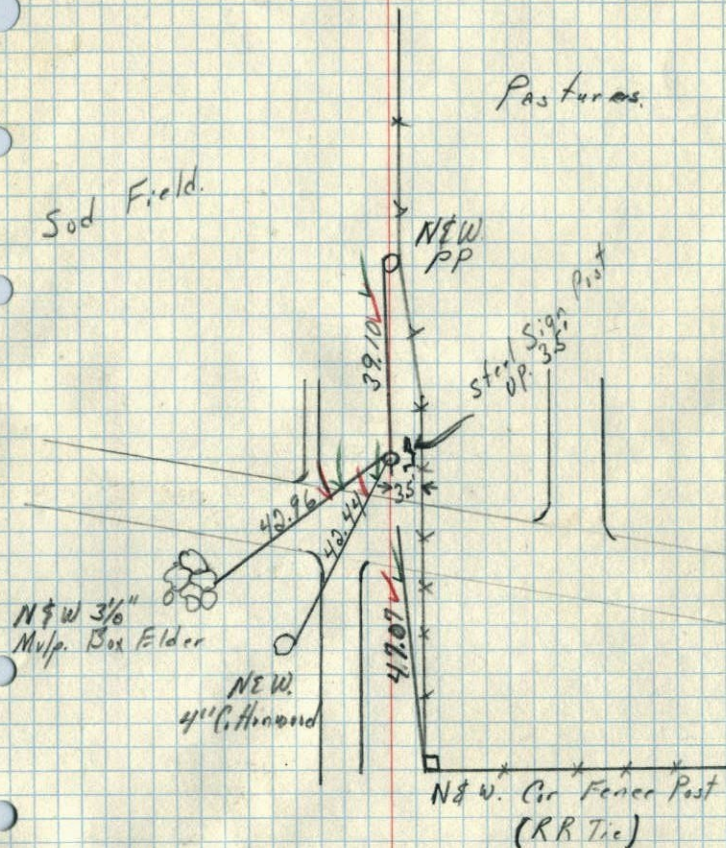
Sept. 26, 1972
 M.D. Anderson +
 H.J. Larson +
 temp. 48.0 #12

TEMPERATURE CORRECTED
 AND HORIZONTALLY
 TAPED MEASUREMENTS
 ROLAND W. ANDERSON
 COUNTY SURVEYOR
 ANOKA COUNTY, MINNESOTA

1969

E 1/4 Cor. Sec. 23 T 31 R 22

Circ. Min. up 0.4' ±



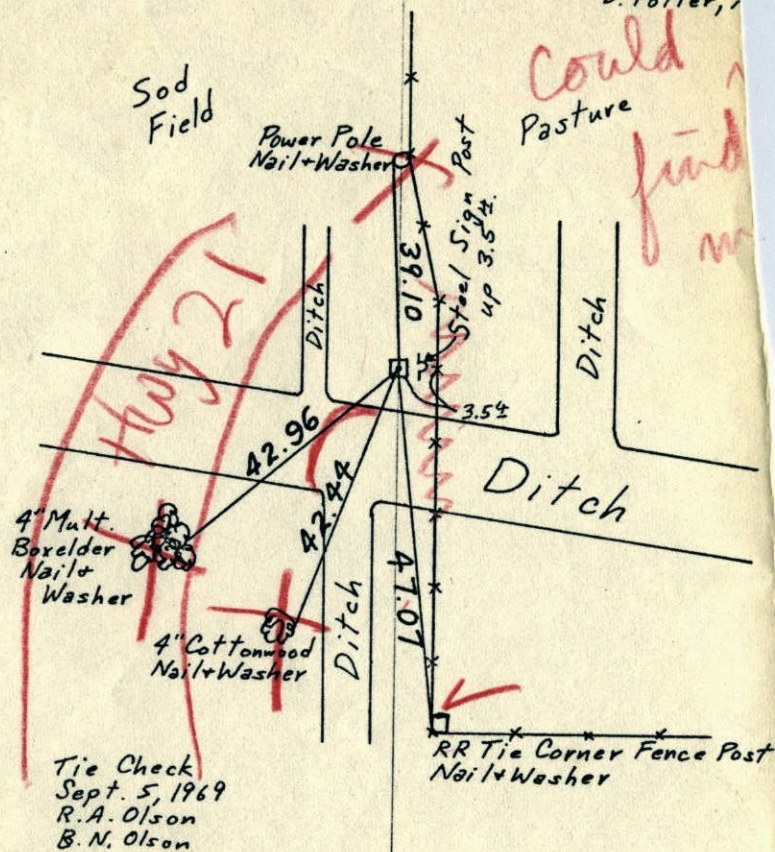
9-5-69
 Temp 75° ✓
 Tape # ? ✓ (New)
 R.A. Olson
 R.N. Olson

1969

E 1/4 Cor. Sec. 23 - T 31 - R 22

Concrete Monument up 0.4' ±

Oct. 1959
D. Potter, Jr.



TEMPERATURE CORRECTED
 AND HORIZONTALLY
 TAPED MEASUREMENTS

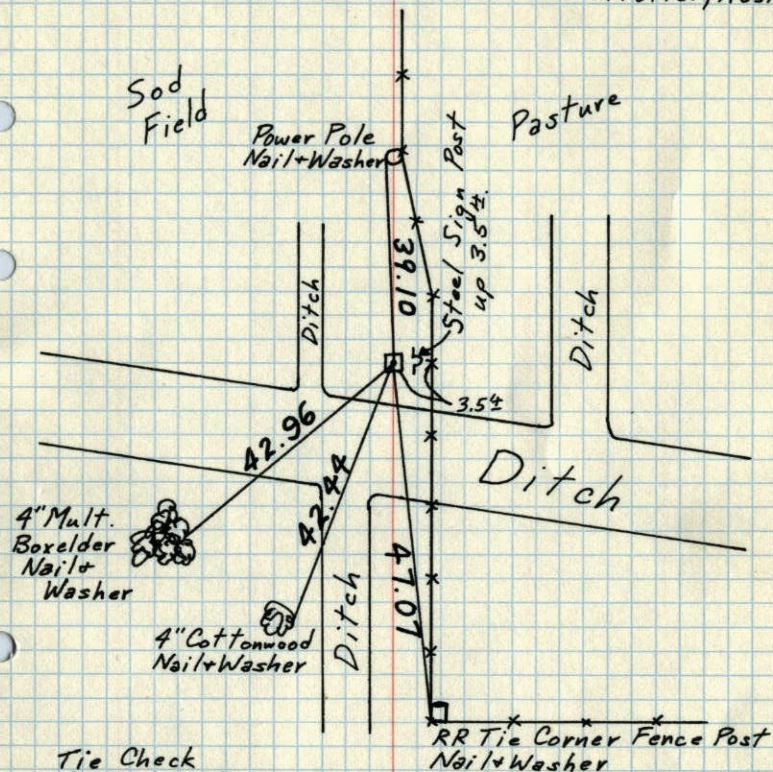
ROLAND W. ANDERSON
 COUNTY SURVEYOR
 ANOKA COUNTY, MINNESOTA

1969⁹⁰

E 1/4 Cor. Sec. 23 - T31 - R22

Concrete Monument up 0.4'

Oct., 1959
D. Potter, Assist.



Tie Check
Sept. 5, 1969
R.A. Olson
B.N. Olson

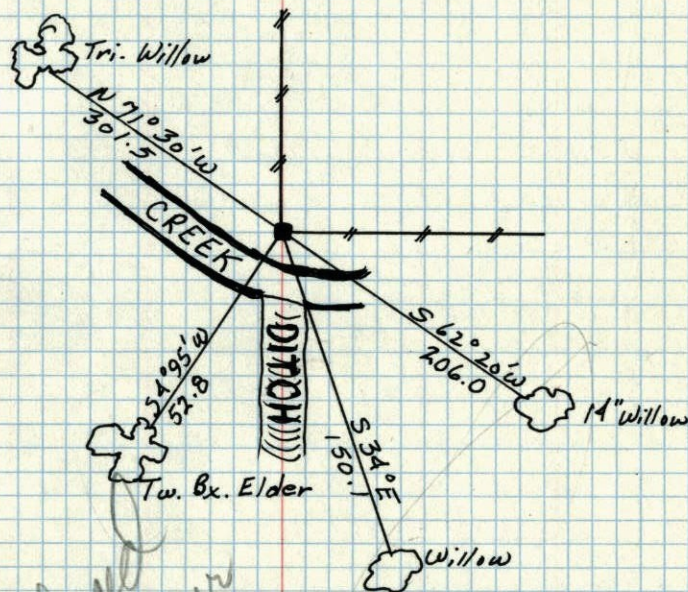
TEMPERATURE CORRECTED
AND HORIZONTALLY
TAPED MEASUREMENTS

ROLAND W. ANDERSON
COUNTY SURVEYOR
ANOKA COUNTY, MINNESOTA

1948²⁸

E 1/4 SEC. 23, T31, R22

CONC. MON. up .7 FT.



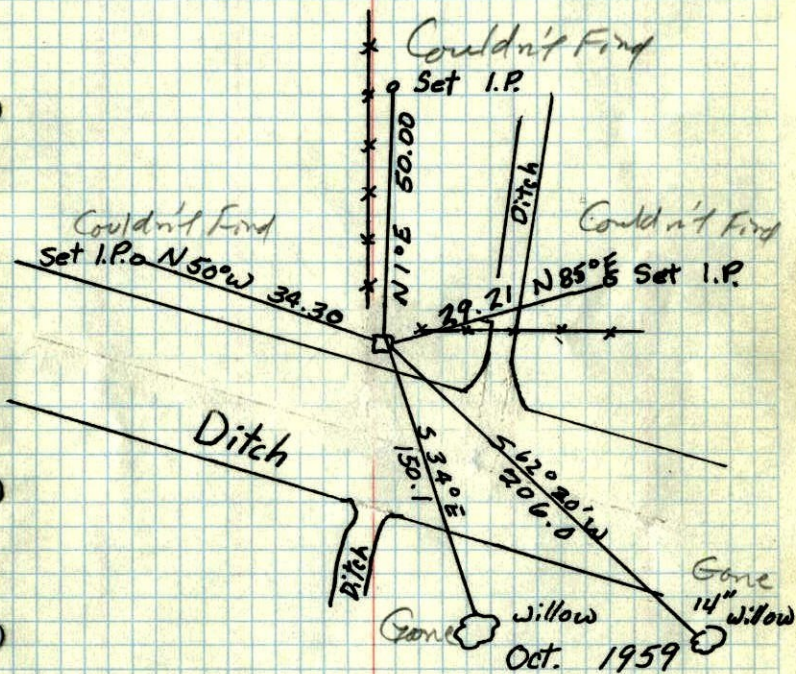
Replaced
by newer
12/2/59

April 20, 1948
CARTWRIGHT

1959 90

E 1/4 Corner Sec. 23, T31, R22

Conc. Mon.



Dennis Potten Assist.

ROLAND W. ANDERSON
COUNTY SURVEYOR
ANOKA COUNTY, MINNESOTA

NO DATE

E 1/4 Corn Sec. 23, T31, R22

