

CERTIFICATE OF LOCATION OF GOVERNMENT CORNER

County of Anoka

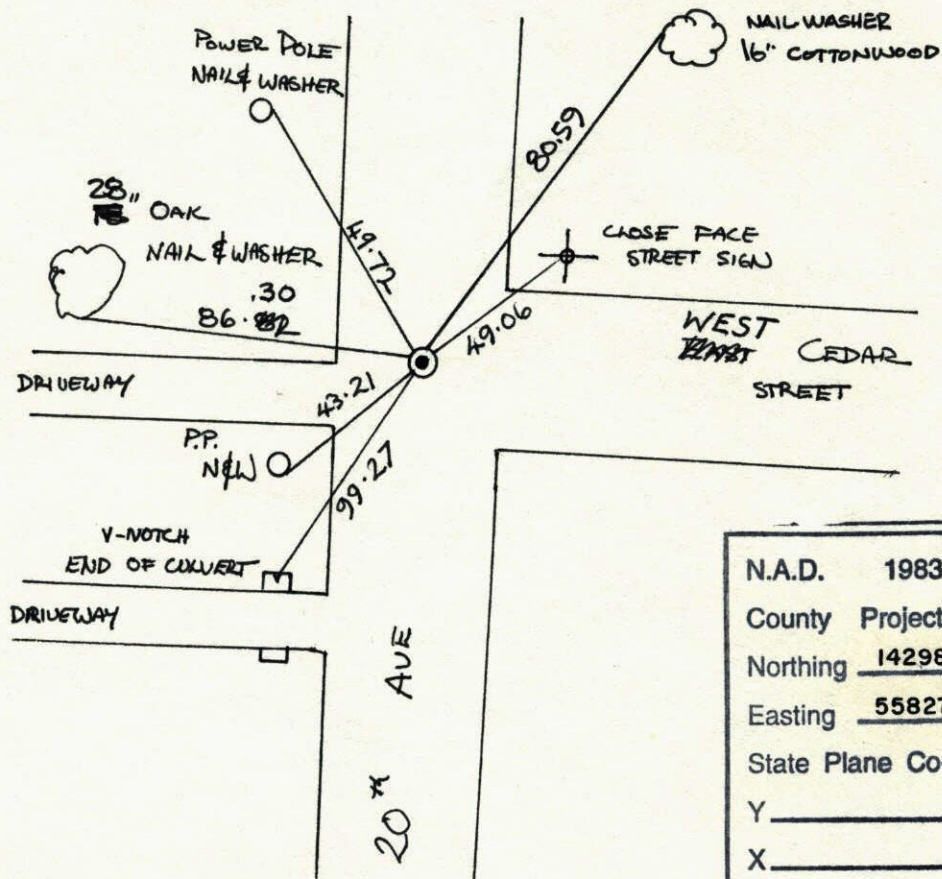
State of Minnesota

Southeast ~~Corner~~ Corner of Sec. 23 Township 31 Range 22

I hereby certify that on the 6th day of APRIL, 1962, I found the described corner which was evidenced by 4" x 6" BROKEN CONCRETE

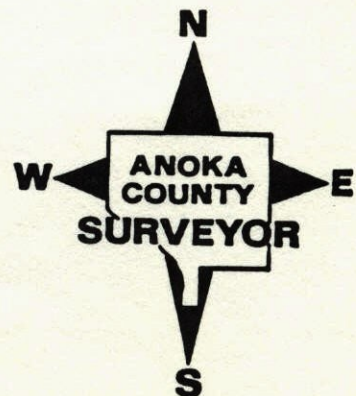
and I further certify that to perpetuate the location of said corner, I did, at the exact location thereof, place a permanent marker consisting of CAST IRON MONUMENT

which reference or witness monuments are located in the manner following:



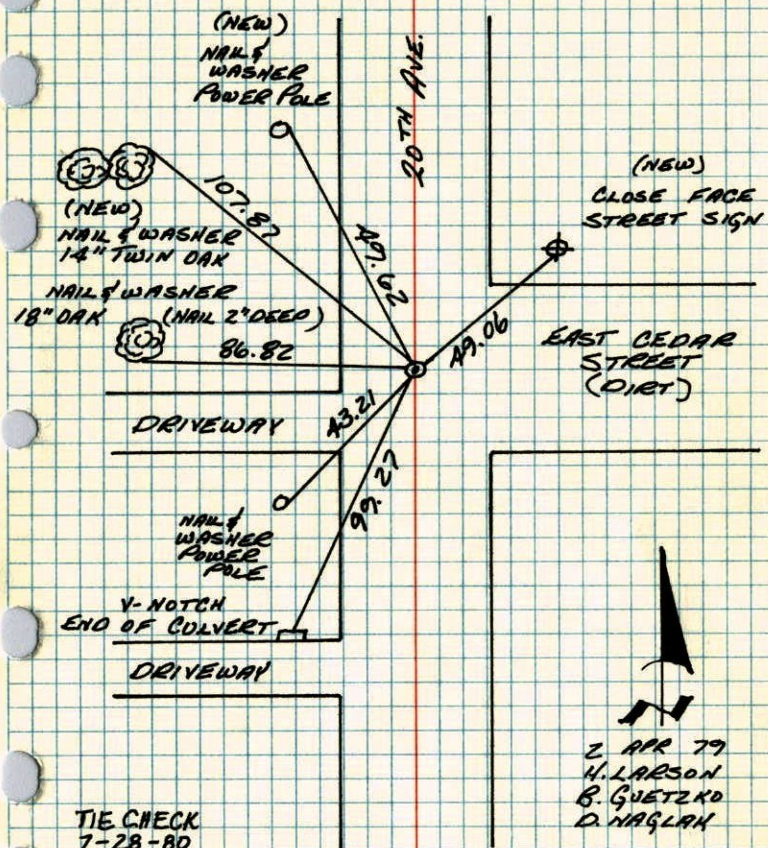
N.A.D.	1983	Co-ordinates
County	Project	Co-ordinates
Northing	<u>142982.7822</u>	<u>83</u>
Easting	<u>558279.2937</u>	<u>*</u>
State Plane Co-ordinates		
Y	_____	
X	_____	
Date	_____	

Revised date	Revised date	Revised date
<u>5-25-83</u>		
<u>7-7-86</u>		
<u>8-27-91</u>		
<u>6-24-96</u>		
<u>3-25-98</u>		



SE. CORNER SECTION 23 - T31 - R22

RAISED CAST IRON MONUMENT SET IN 1972 BY
M.D. ANDERSON AND CHECKED TIES



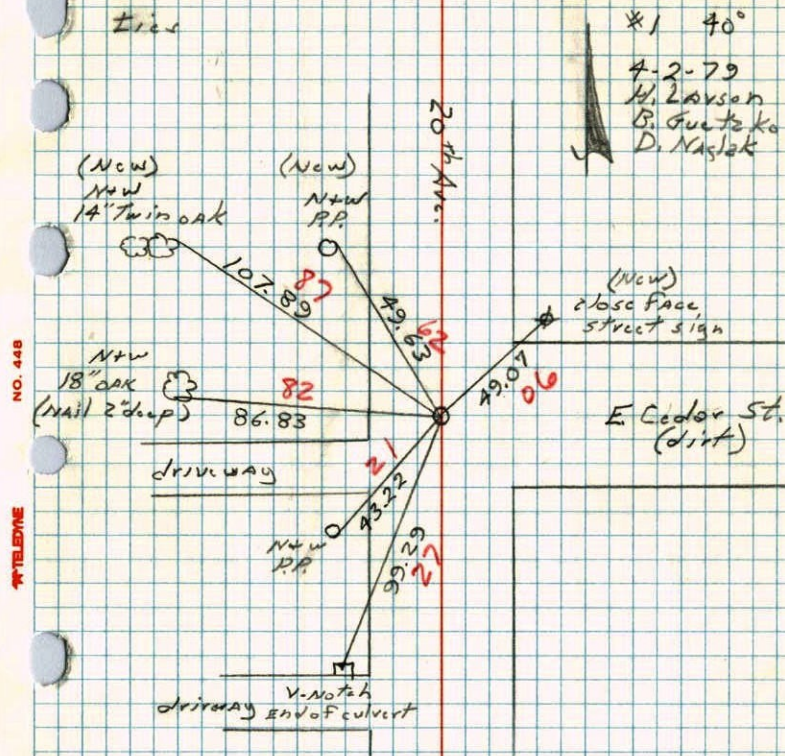
TIE CHECK
7-28-80
B. STEPHENS
P. ROSS
P. HORNBY

TEMPERATURE CORRECTED
AND HORIZONTALLY
TAPED MEASUREMENTS

ROLAND W. ANDERSON
COUNTY SURVEYOR
ANOKA COUNTY, MINNESOTA

SE Cor. Section 23 T31 R22

Raised cast iron monument set
in 1972 by M.D. Anderson, and checked
ties

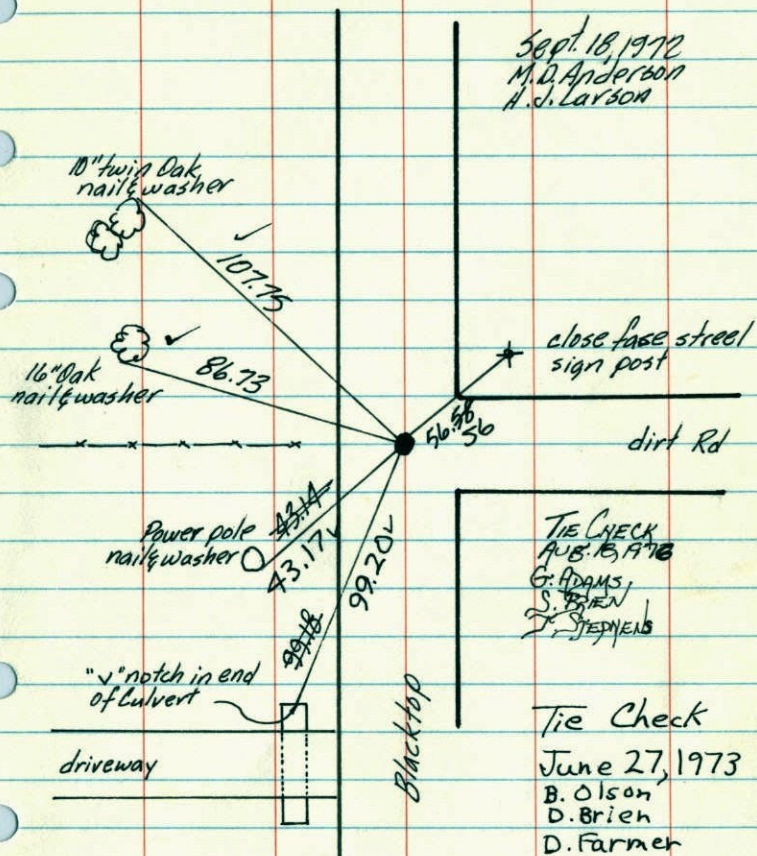


*1 40°
4-2-79
H. LARSON
B. GUETZKO
D. NAGLAK

NO. 448

TELEPHONE

S.E. Cor. Sec. 23-T31-R22
Cast Iron Monument flush in Blacktop



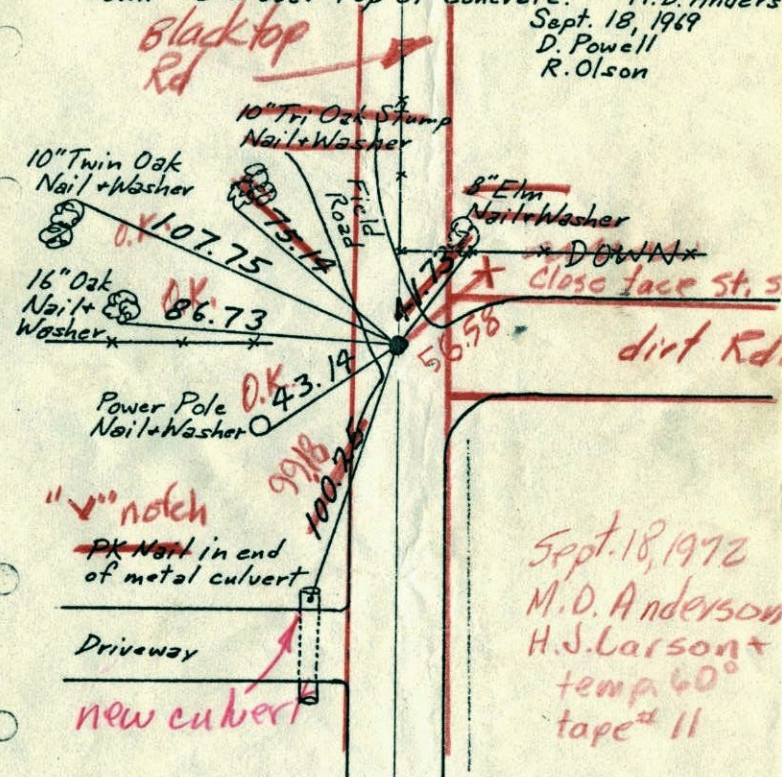
TEMPERATURE CORRECTED
AND HORIZONTALLY
TAPED MEASUREMENTS

ROLAND W. ANDERSON
COUNTY SURVEYOR
ANOKA COUNTY, MINNESOTA

SE Cor. Sec. 23-T31-R22

Found 4"x6" Broken Concrete Monument
down 2.7" with 1/2" Iron Bolt on North Side.
Sat Cast Iron Monument
down 0.5" over top of Concrete.

April 6, 1961
J. Oliver
M.D. Anders.
Sept. 18, 1969
D. Powell
R. Olson



TEMPERATURE CORRECTED
AND HORIZONTALLY
TAPED MEASUREMENTS

ROLAND W. ANDERSON
COUNTY SURVEYOR
ANOKA COUNTY, MINNESOTA

Sept. 18, 1972
M.D. Anderson
H.S. Larson
temp 60°
tape # 11

1969 94

SE Cor. Sec. 23-T31-R22

Found 4"x6" Broken Concrete Monument

down 2.7± with ½" Iron Bolt on North Side.

April 6, 1962

Set Cast Iron Monument

J. Oliver

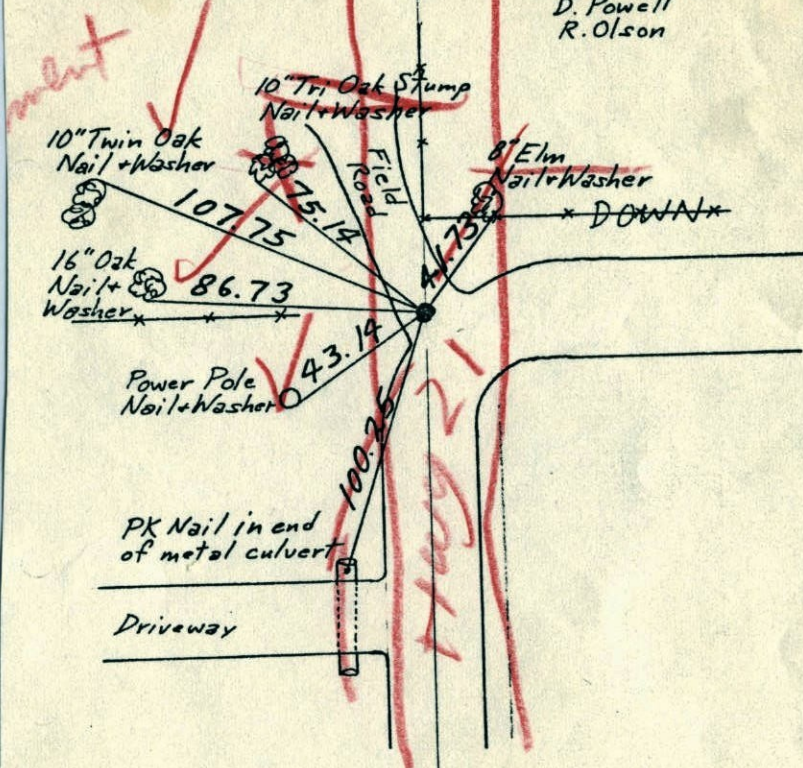
down 0.5± over top of Concrete.

M.D. Anderson

Sept. 18, 1969

D. Powell

R. Olson



TEMPERATURE CORRECTED
AND HORIZONTALLY
TAPED MEASUREMENTS

ROLAND W. ANDERSON
COUNTY SURVEYOR
ANOKA COUNTY, MINNESOTA

94
1969

SE Cor. Sec. 23-T31-R22

Found 4"x6" Broken Concrete Monument

down 2.7± with ½" Iron Bolt on North Side.

April 6, 1962

Set Cast Iron Monument

J. Oliver

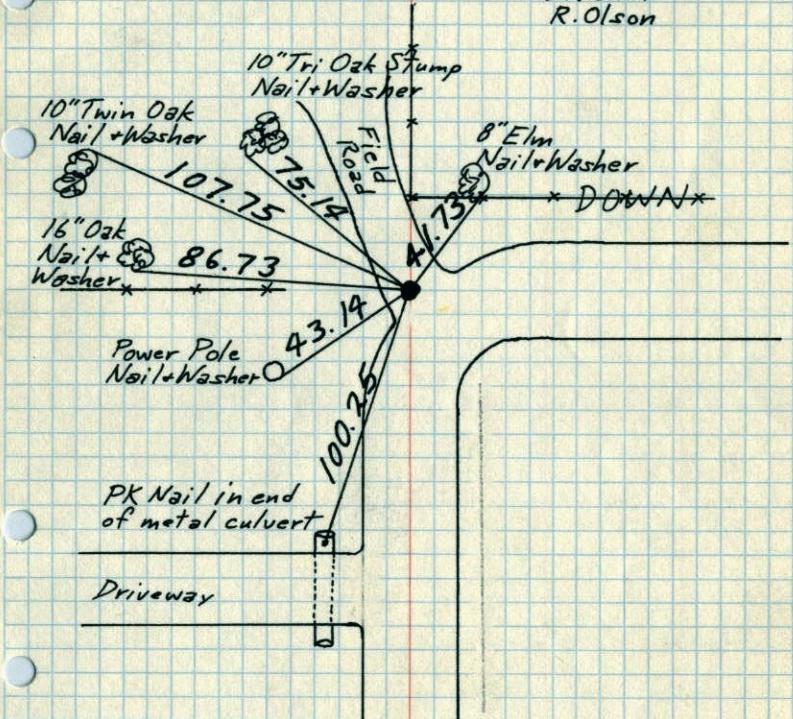
down 0.5± over top of Concrete.

M.D. Anderson

Sept. 18, 1969

D. Powell

R. Olson



TEMPERATURE CORRECTED
AND HORIZONTALLY
TAPED MEASUREMENTS

ROLAND W. ANDERSON
COUNTY SURVEYOR
ANOKA COUNTY, MINNESOTA

1969 94

SE Cor. Sec. 23, T31, R22

Found 4"X6" Concrete Monument down ~~0.5~~ ^{1.02}

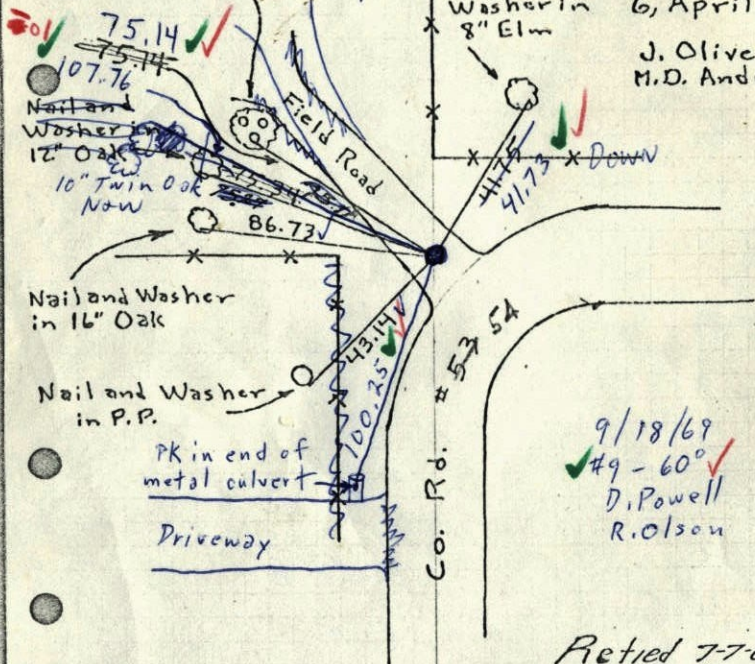
with 1/2" Iron Bolt on North Side
Set C.I. Mon. down 0.5'± over top of
Broken Concrete down 2.7'±.

Nail and Washer
in 10" Triple Oak. Stamp

Nail and
Washer in
8" Elm

6, April 62

J. Oliver
M.D. Anderson



9/18/69
#9 - 60°
D. Powell
R. Olson

Retied 7-7-65
M.D. Anderson
John Dunlap

ROLAND W. ANDERSON
COUNTY SURVEYOR
ANOKA COUNTY, MINNESOTA

TEMPERATURE CORRECTED
AND HORIZONTALLY
TAPED MEASUREMENTS

1965 94

SE Cor. Sec. 23, T31, R22

Found 4"X6" Concrete Monument down ~~0.5~~ ^{1.02}

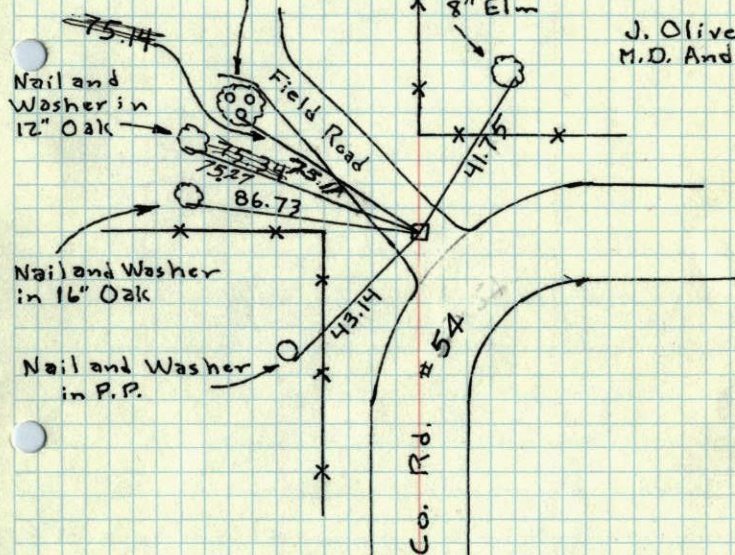
with 1/2" Iron Bolt on North Side

Nail and Washer
in 10" Triple Oak

Nail and
Washer in
8" Elm

6, April 62

J. Oliver
M.D. Anderson



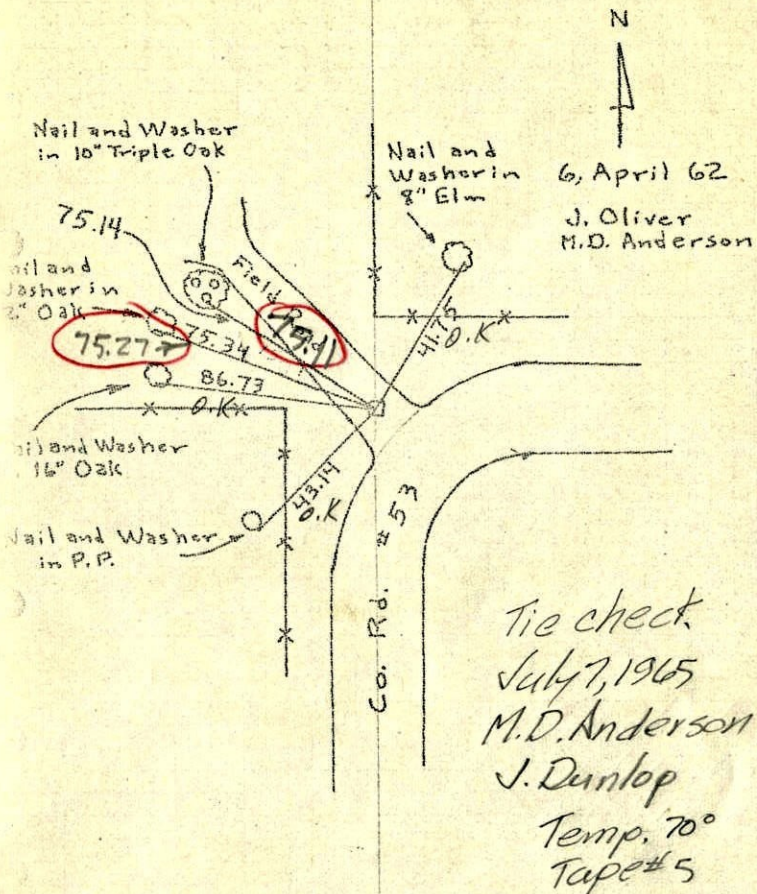
ROLAND W. ANDERSON
COUNTY SURVEYOR
ANOKA COUNTY, MINNESOTA

TEMPERATURE CORRECTED
AND HORIZONTALLY
TAPED MEASUREMENTS

1965
55

SE Cor. Sec. 23, T31, R22

Found 4"x6" Concrete Monument down 1.0' with 1/2" Iron Bolt on North Side



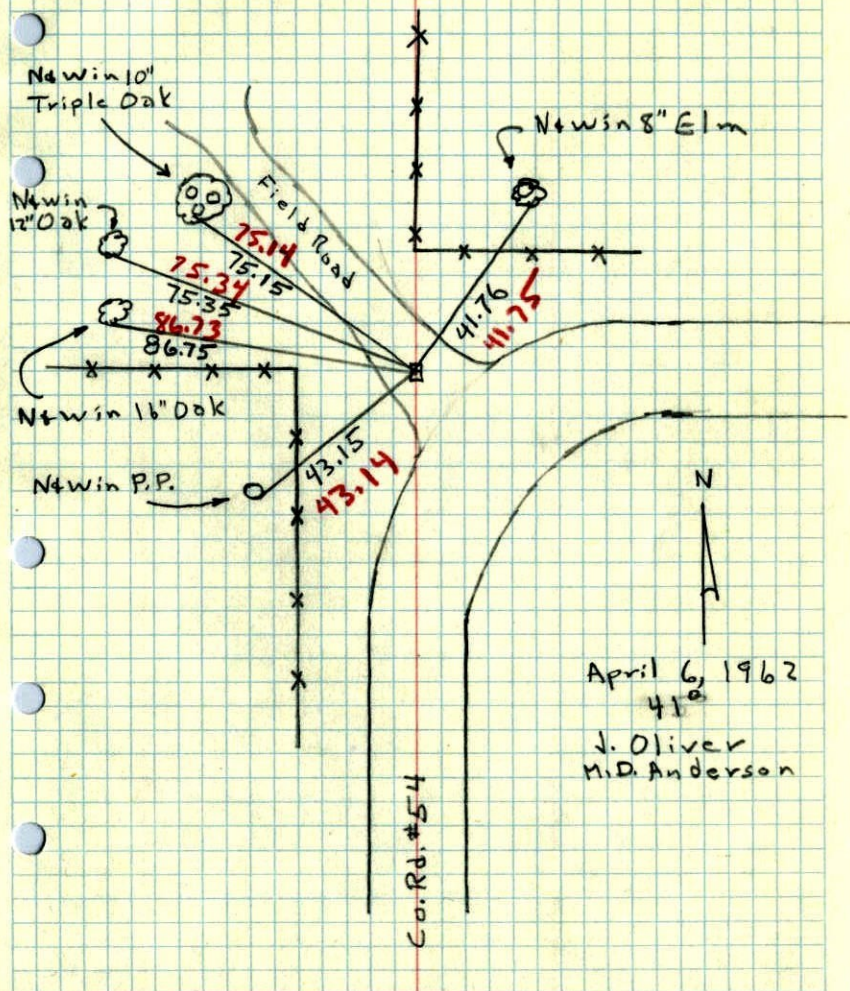
OLAND W. ANDERSON
COUNTY SURVEYOR
ANOKA COUNTY, MINNESOTA

TEMPERATURE CORRECTED
AND HORIZONTALLY
TAPED MEASUREMENTS

1962-34

SE Cor. Sec. 23, T31, R22

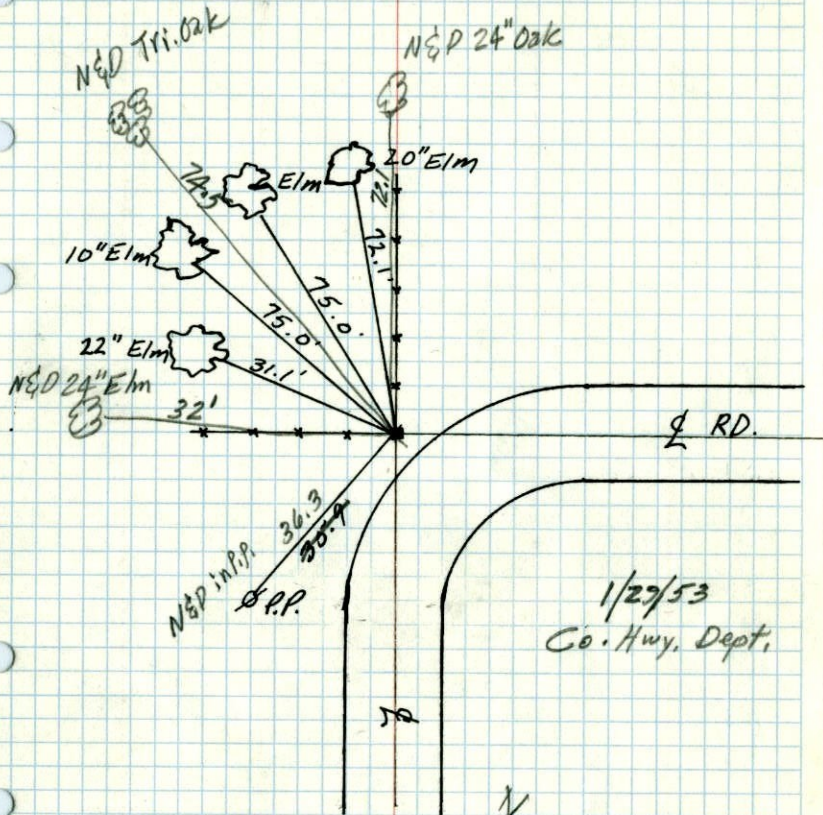
Found 4"x6" Conc. Mon. down 0.5' with 1/2" Iron Bolt on North Side.



April 6, 1962
41
J. Oliver
M.D. Anderson

1948 34

E. Sec. 23, T31, R22
CONC. MON. FLUSH



1/29/53
Co. Hwy. Dept.

New Ties in
New Tie Book

April 20, 1948
CARTWRIGHT

SE cor. sec. 23 T31 R22
uncovered con. Jan. 29, 1953

