

# CERTIFICATE OF LOCATION OF GOVERNMENT CORNER

County of Anoka

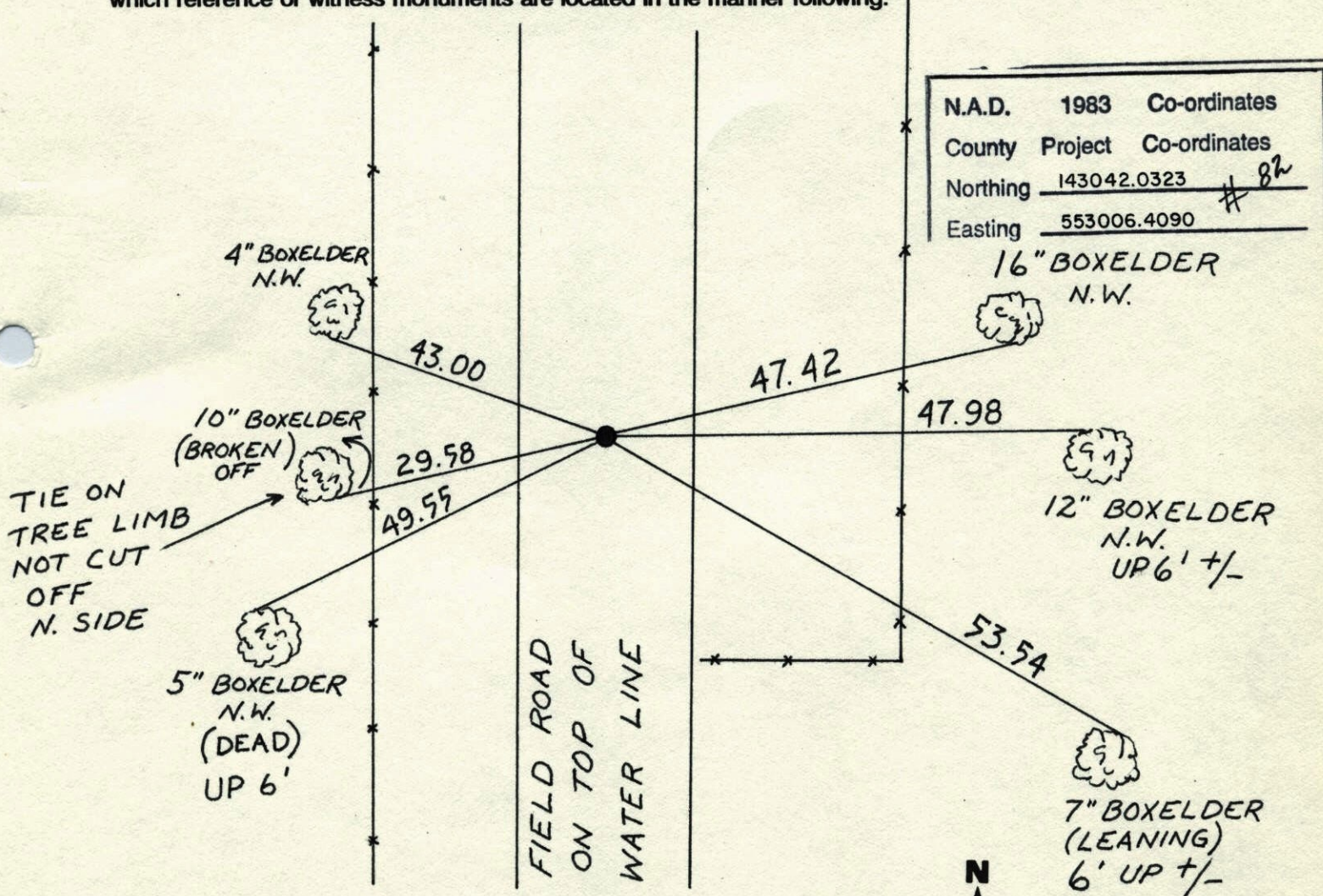
State of Minnesota

NORTHEAST Corner of Sec. 27 Township 31 Range 22

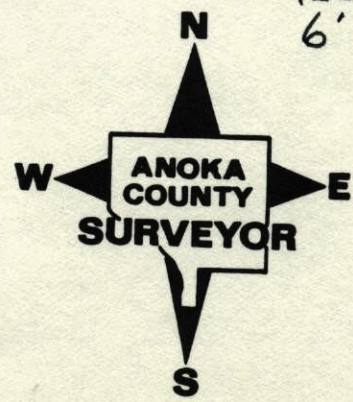
I hereby certify that on the 24 day of APRIL, 1969, I found the described corner which was evidenced by 2" I.P.

and I further certify that to perpetuate the location of said corner, I did, at the exact location thereof, place a permanent marker consisting of CAST IRON MON.

which reference or witness monuments are located in the manner following:



Revised date	Revised date	Revised date
10-24-91		
7-26-96		
3-5-98		

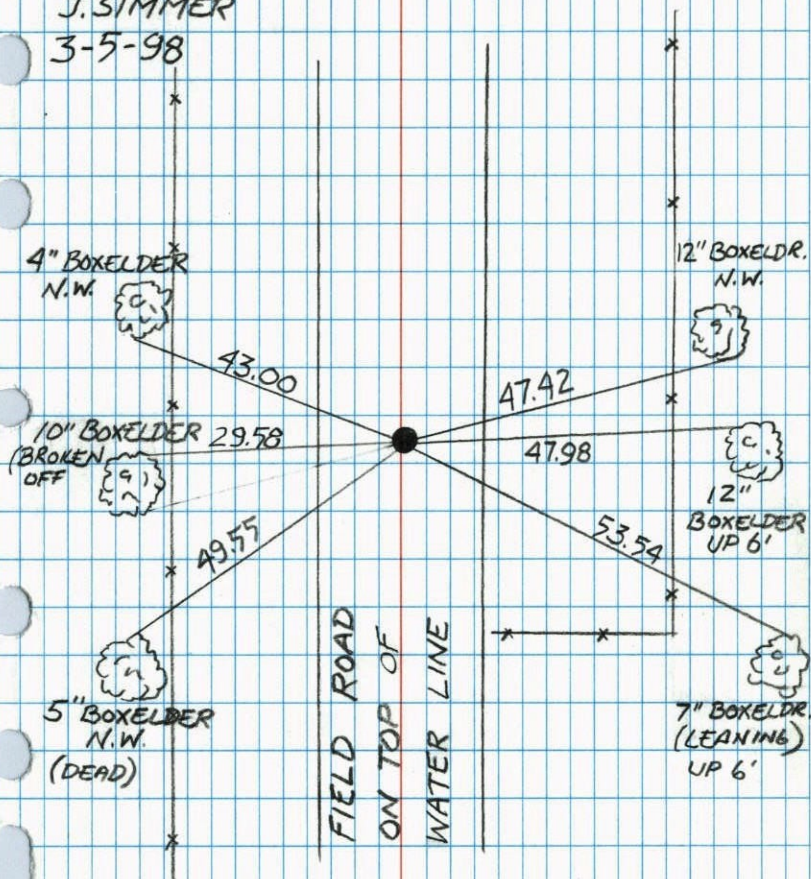


NORTHEAST S.27 T.31 R.22

RETIED CAST IRON MON.

H. LARSON  
B. KLEMM  
J. SIMMER

3-5-98

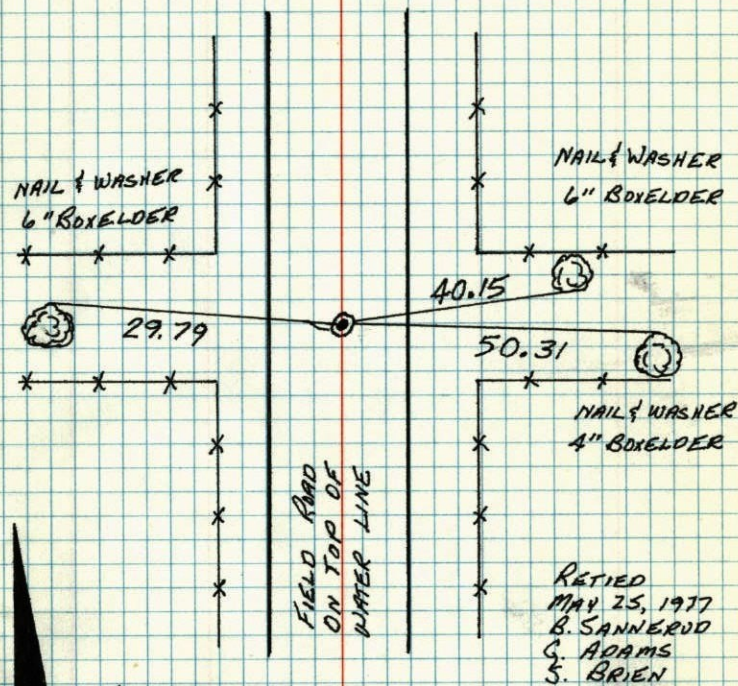


NO. 446

NATIONAL PRINTFAST

N.E. COR. SEC. 27-T31-R22

FOUND AND TIED 2" IRON PIPE, IRON PIPE UP  
1.5' AND OVER TOP OF ST. PAUL WATER LINE.  
SET CAST IRON MONUMENT IN PLACE OF PIPE.  
SET FLUSH 7-11-73 DOWN 0.3' 5-25-77

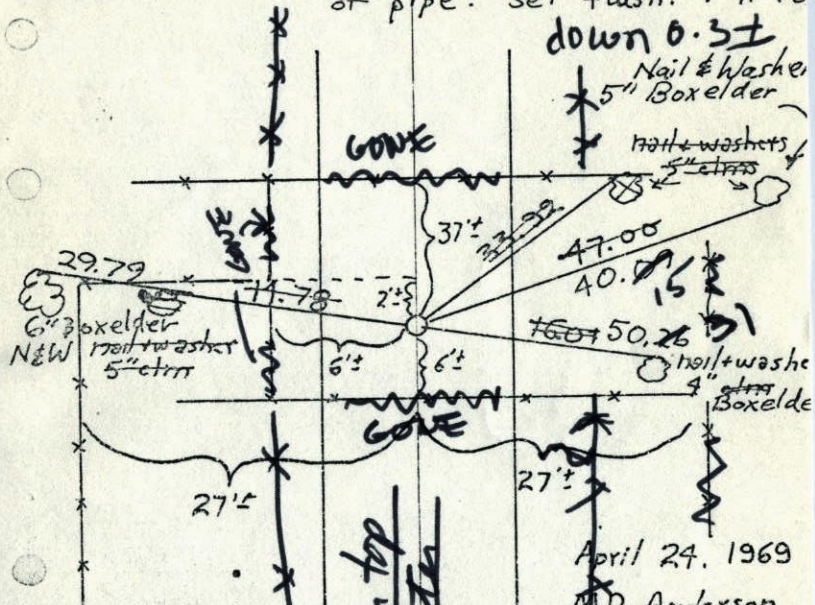


APRIL 24, 1977  
M. D. ANDERSON  
H. J. LARSON  
R. A. OLSON

TEMPERATURE CORRECTED ROLAND W. ANDERSON  
AND HORIZONTALLY COUNTY SURVEYOR  
TAPED MEASUREMENTS 'ANOKA COUNTY, MINNESOTA'

NE Cor. Sec. 27 T31 R22

Found and Tied 2" Iron pipe.  
I.P. up 1.5'± and over top of St. Paul  
water line. Set Cast Iron Mon. in place  
of pipe. Set flush. 7-11-73



April 24, 1969  
M.D. Anderson  
H. J. Larson  
R. A. Olson

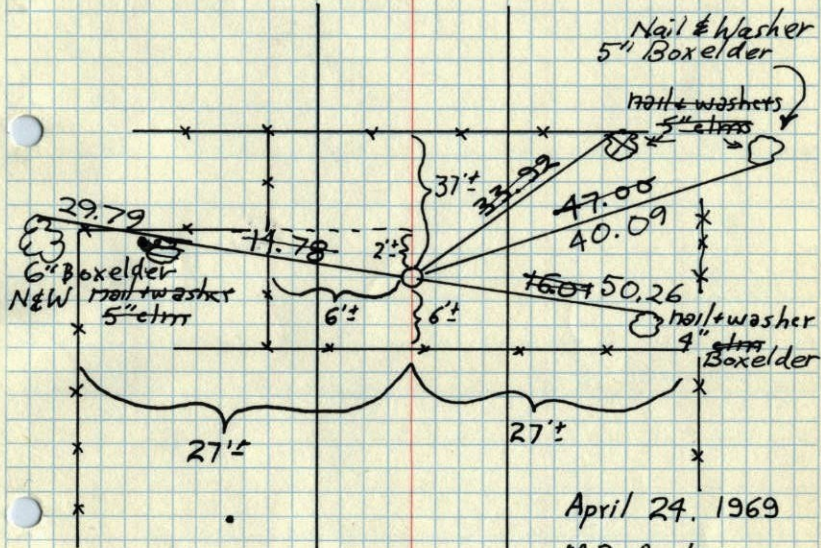
Tie Check  
July 11, 1973  
B. Olson  
D. Brien  
D. Farmer

TEMPERATURE CORRECTED  
AND HORIZONTALLY  
TAPED MEASUREMENTS

ROLAND W. ANDERSON  
COUNTY SURVEYOR  
ANOKA COUNTY, MINNESOTA

NE Cor. Sec. 27 T31 R22

Found and Tied 2" Iron pipe.  
I.P. up 1.5'± and over top of St. Paul  
water line. Set Cast Iron Mon. in place  
of pipe. Set flush. 7-11-73.



April 24, 1969  
M.D. Anderson  
H. J. Larson  
R. A. Olson

Tie Check  
July 11, 1973  
B. Olson  
D. Brien  
D. Farmer

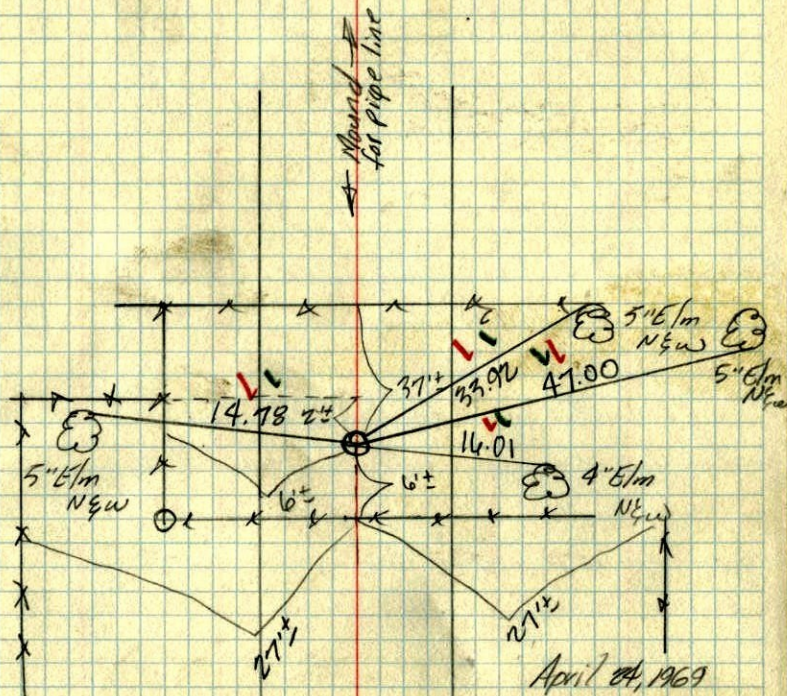
TEMPERATURE CORRECTED  
AND HORIZONTALLY  
TAPED MEASUREMENTS

ROLAND W. ANDERSON  
COUNTY SURVEYOR  
ANOKA COUNTY, MINNESOTA

N.E. Cor. Sec. 27-T 31-R 22

found 2" I.P. up 1.5'±  
over top to St. Paul water line

1969



April 24, 1969  
M.D. Anderson  
H.J. Larson  
R.A. Olson  
temp 65°  
tape 6