

CERTIFICATE OF LOCATION OF GOVERNMENT CORNER

County of Anoka

State of Minnesota

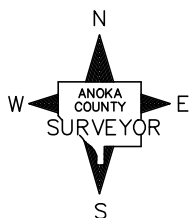
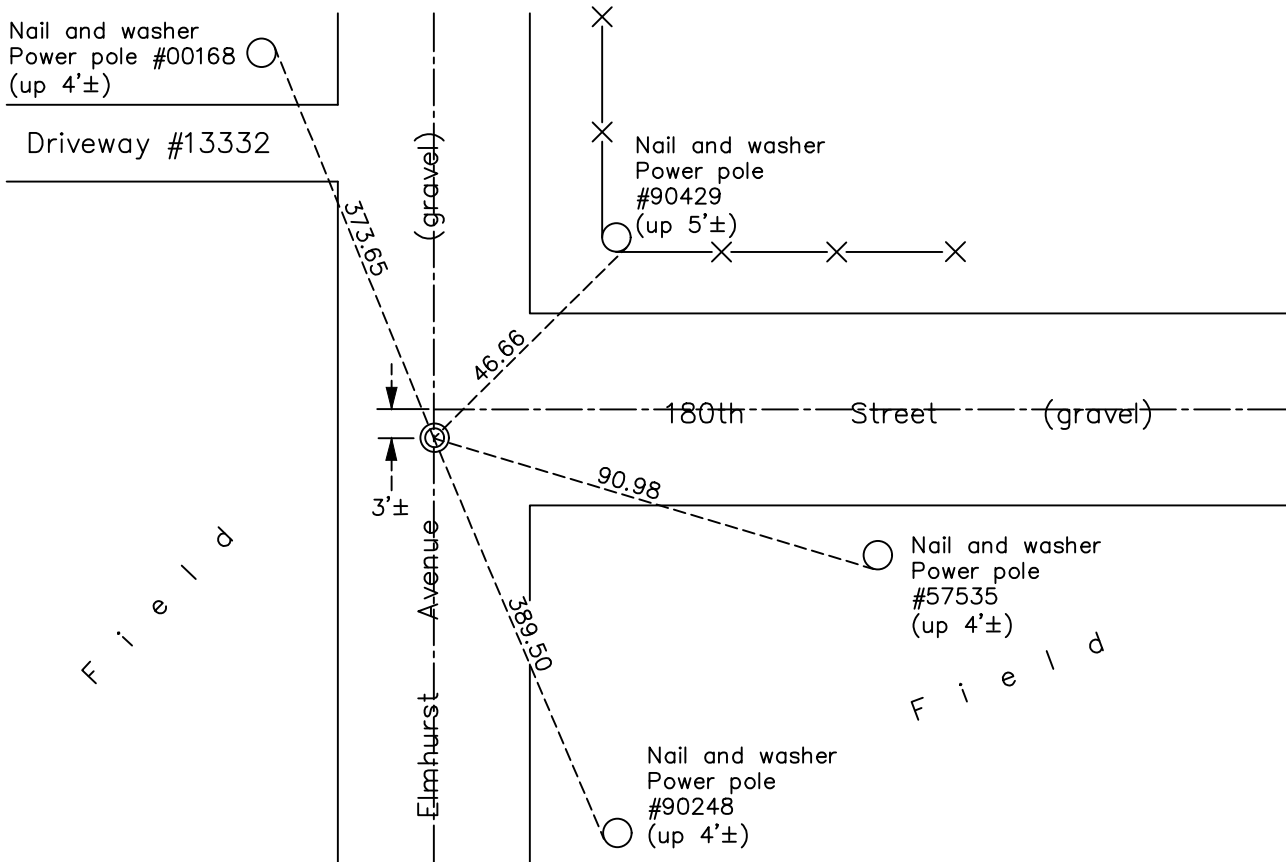
Northeast Corner of Sec. 1 Township 31 Range 22

On the 27th day of June, 1967, the described corner was evidenced by a granite monument

and to perpetuate the location of said corner, at the exact location thereof, a permanent marker was placed consisting of a cast iron monument set on top of the granite monument

AND on the 20th day of April, 2021, said permanent marker was found down 1'± and the ties were updated

Updated reference ties are as shown below.



Revision Date
7/14/21

N.A.D. 1983 Coordinates
 (1996 Adjustment)

County Project Coordinates	
Northing	<u>164129.2557</u>
Easting	<u>563644.8841</u>
Date	<u>2/25/98</u>

I hereby certify that this United States public land survey monument record is correct and complete to the best of my knowledge and belief.
David M. Zieglmeier Date 8/27/21
 David M. Zieglmeier, Anoka County Deputy Surveyor
 Minnesota License Number 46179

HISTORY OF GOVERNMENT CORNER

Page No. 1

County of Anoka

State of Minnesota

Northeast Corner of Sec. 1 Township 31 Range 22

CORNER HISTORY:

June 27, 1967 – Found township Granite Monument down 20"± in dirt road. Set 1/2" Iron Pipe over top center. Established ties to monument.

August 1, 1969 – Replaced 1/2" Iron Pipe with a Cast Iron Monument down 0.5'± over top center of Granite Monument. Updated ties.

June 21, 1973 – Found Cast Iron Monument and updated ties.

May 12, 1977 – Found Cast Iron Monument and updated ties.

July 24, 1980 – Found Cast Iron Monument and updated ties.

July 21, 1986 – Found Cast Iron Monument and updated ties.

October 17, 1991 – Found Cast Iron Monument and updated ties.

July 1, 1996 – Found Cast Iron Monument and updated ties.

February 25, 1998 – Found Cast Iron Monument and updated ties.

July 22, 2010 – Cast Iron Monument was not found. A 1" Iron Pipe with a nail in the center was found down 0.3'±. Updated ties using nail.

January 9, 2017 – Found Cast Iron Monument down 1'±. Verified location of corner by VRS GPS methods. Updated ties.

April 20, 2021 – Found Cast Iron Monument down 1'±. Verified location of corner by VRS GPS methods. Updated ties.