

CERTIFICATE OF LOCATION OF GOVERNMENT CORNER

County of Anoka

State of Minnesota

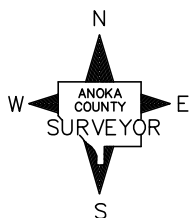
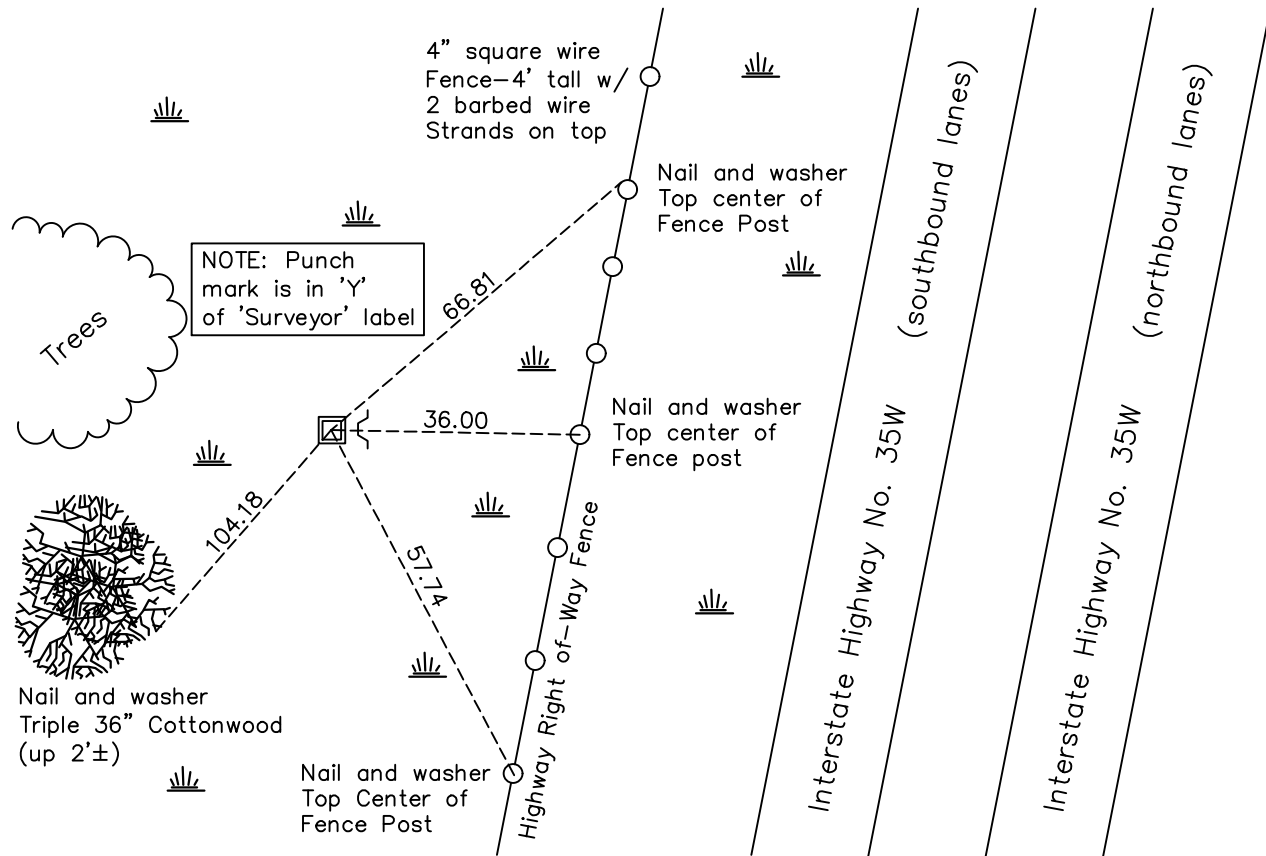
Northwest Corner of Sec. 1 Township 31 Range 22

On the 16th day of July, 1962, the described corner was evidenced by a 4" concrete monument

and to perpetuate the location of said corner, at the exact location thereof, a permanent marker was placed consisting of a red & white 2" square steel Telspar Monument up 1'± with a 'County Surveyor' cap and punchmark

AND on the 18th day of May, 2021, said permanent marker was found and the ties were updated

Updated reference ties are as shown below.



Revision Date
7/14/21

N.A.D. 1983 Coordinates
 (1996 Adjustment)

County Project Coordinates	
Northing	<u>164130.4048</u>
Easting	<u>558383.3469</u>
Date	<u>2/18/98</u>

I hereby certify that this United States public land survey monument record is correct and complete to the best of my knowledge and belief.

David M. Zieglmeier Date 8/27/21

David M. Zieglmeier Anoka County Deputy Surveyor
 Minnesota License Number 46179

HISTORY OF GOVERNMENT CORNER

Page No. 3

County of Anoka

State of Minnesota

Northwest Corner of Sec. 1 Township 31 Range 22

CORNER HISTORY:

September 7, 1948 – Cartwright found Concrete Monument. Established ties to monument.

July 16, 1962 – Found 4” square Concrete Monument up 0.5’± and set Iron fence post on north side of monument. Found 1.5 ” Iron Pipe on the north side and updated ties.

July 7, 1965 – Found Concrete Monument and updated ties.

March 17, 1966 – Found Concrete Monument and set sign and post on the southeast side. Updated ties.

August 29, 1966 – Set construction ties and added ties prior to road construction.

August 7, 1969 – Found Concrete Monument and updated ties.

July 18, 1973 – Found Concrete Monument and updated ties.

May 13, 1977 – Found Concrete Monument and updated ties.

August 1, 1980 – Found Concrete Monument and updated ties.

July 18, 1986 – Found Concrete Monument and updated ties.

October 21, 1991 – Found Concrete Monument and updated ties.

July 10, 1996 – Found Concrete Monument and updated ties.

February 18, 1998 – Found Concrete Monument with a sign and post on the south side of monument and established NAD 1983 (1996 Adjustment) Anoka County Project Coordinates by Static GPS methods. Updated ties.

March 17, 2011 – Replaced Concrete Monument with a red and white 2” square steel Telspar Monument up 1’± with a ‘County Surveyor’ cap and punch mark. Verified location of corner by VRS GPS methods. Updated ties.

January 27, 2017 – Found red and white 2” square steel Telspar Monument up 1’± with a ‘County Surveyor’ cap and punch mark. Updated ties.

May 18, 2021 – Found red and white 2” square steel Telspar Monument up 1’± with a ‘County Surveyor’ cap and punch mark. Verified position by VRS Methods. Updated ties.