

CERTIFICATE OF LOCATION OF GOVERNMENT CORNER

County of Anoka

State of Minnesota

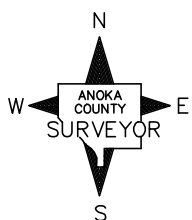
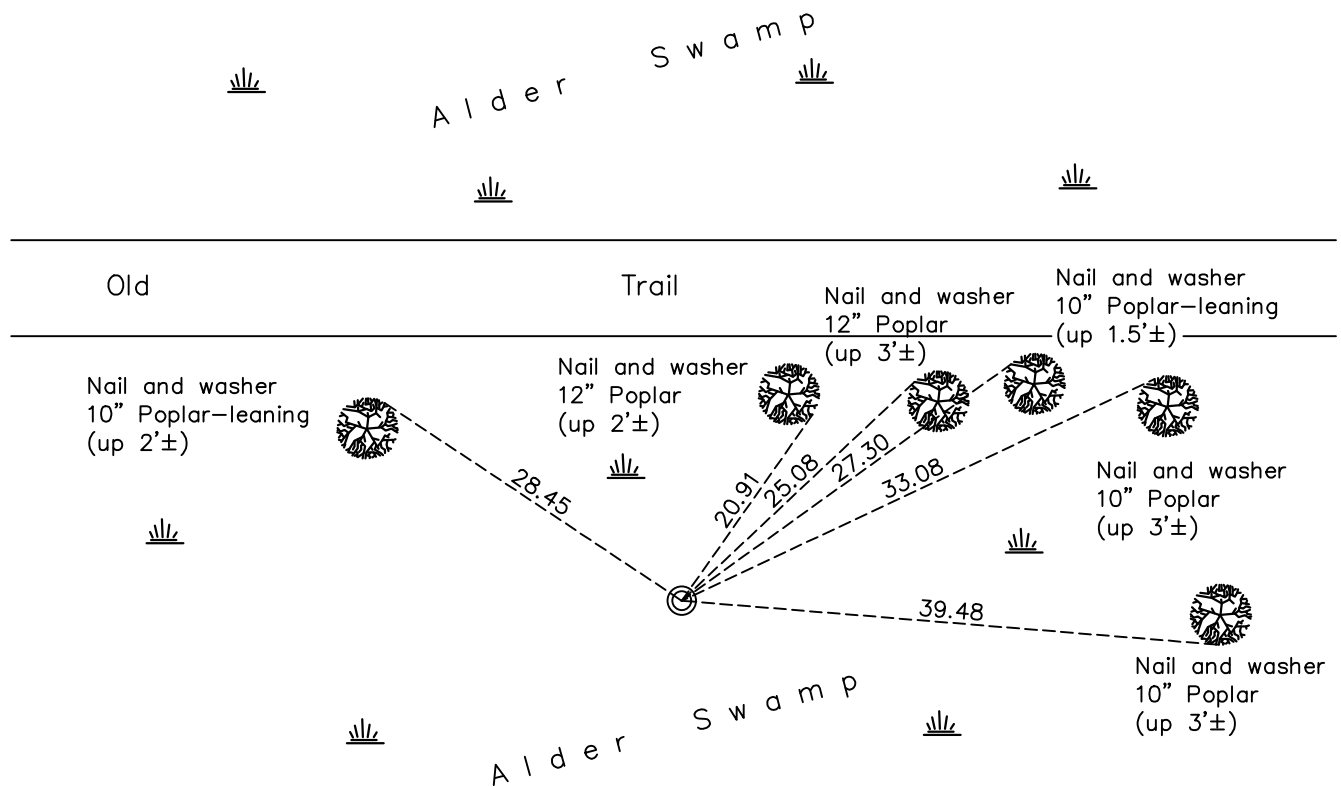
North 1/4 Corner of Sec. 2 Township 31 Range 22

On the 12th day of October, 1975, the described corner was evidenced by area resurvey

and to perpetuate the location of said corner, at the exact location thereof, a permanent marker was placed consisting of a red and white iron pipe with sign attached

AND on the 18th day of May, 2021, said permanent marker was found up 2.5"± leaning 0.1'± north and the ties were updated

Updated reference ties are as shown below.



Revision Date
7/16/21

N.A.D. 1983 Coordinates
 (1996 Adjustment)

County Project Coordinates	
Northing	<u>164142.8777</u>
Easting	<u>555750.9628</u>
Date	<u>4/09/98</u>

I hereby certify that this United States public land survey monument record is correct and complete to the best of my knowledge and belief.
David M Zieglsmeier Date 8/27/21
David M. Zieglsmeier, Anoka County Surveyor
 Minnesota License Number 46179

HISTORY OF GOVERNMENT CORNER

Page No. 4

County of Anoka

State of Minnesota

North 1/4 Corner of Sec. 2 Township 31 Range 22

CORNER HISTORY:

October 12, 1975 – Set red and white Iron Pipe using area resurvey and established ties to monument.

July 23, 1996 – Found Iron Pipe and updated ties.

April 9, 1998 – Found Iron Pipe and established NAD 1983 (1996 Adjustment) Anoka County Project Coordinates by Static GPS methods. Updated ties.

December 28, 2010 – Found Iron Pipe leaning $0.1'\pm$ north and updated ties.

February 6, 2017 – Found Iron Pipe up $2.5'\pm$ with sign attached leaning $0.1'\pm$ north and updated ties.

May 18, 2021 – Found Iron Pipe up $2.5'\pm$ with sign attached leaning $0.1'\pm$ north, Verified position by VRS method. updated ties.