

# CERTIFICATE OF LOCATION OF GOVERNMENT CORNER

County of Anoka

State of Minnesota

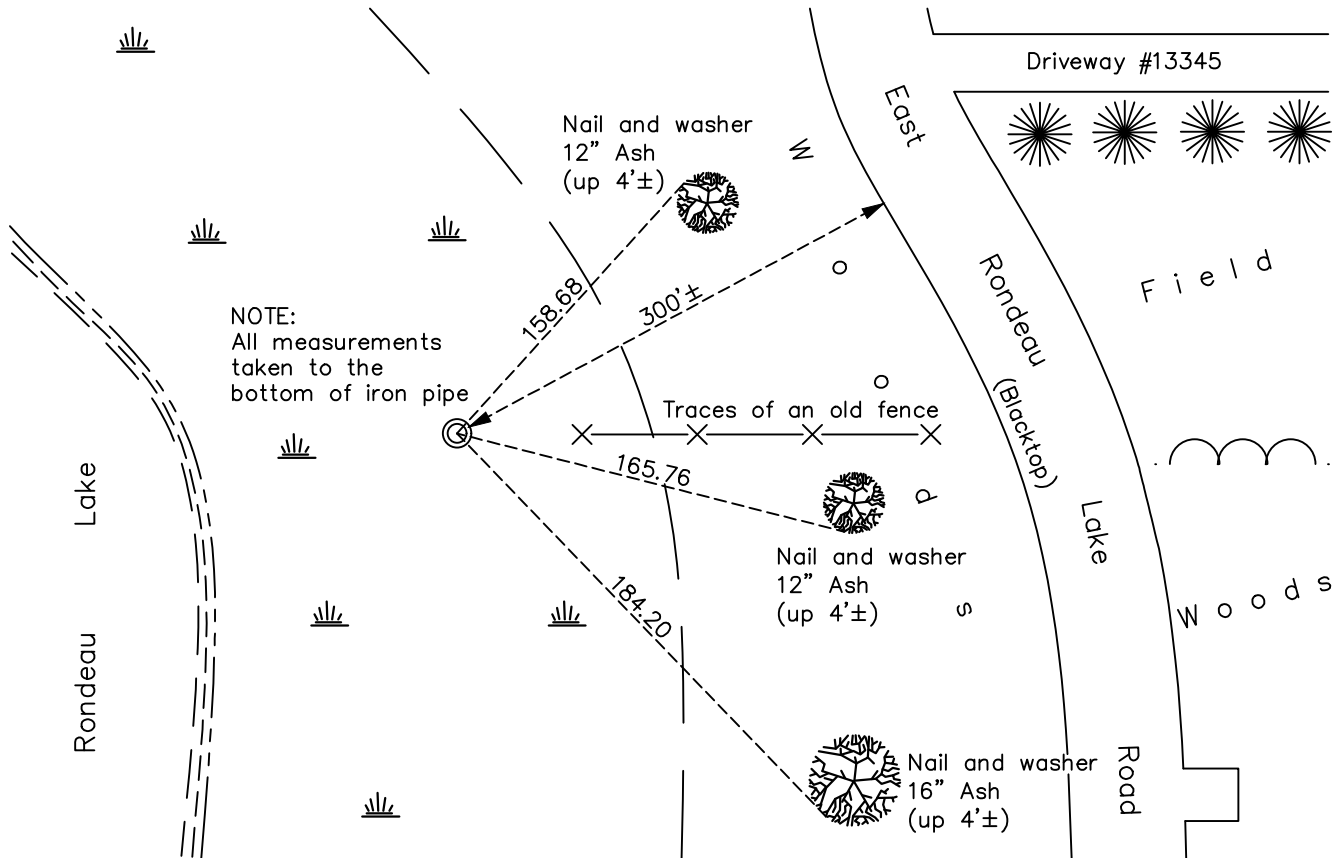
## Northeast Corner of Sec. 3 Township 31 Range 22

On the 30th day of September, 1975, the described corner was evidenced by a 6" iron pipe

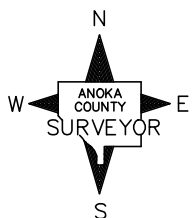
and to perpetuate the location of said corner, at the exact location thereof, a permanent marker was placed consisting of the same 6" iron pipe up 7'± leaning to the northeast

AND on the 12th day of January, 2017, said permanent marker was found and the ties were updated

Updated reference ties are as shown below.



NOTE:  
All measurements taken to the bottom of iron pipe



Revision Date  
6/22/17

N.A.D. 1983 Coordinates  
(1996 Adjustment)

County Project Coordinates	
Northing	<u>164154.1532</u>
Easting	<u>553117.4521</u>
Date	<u>2/18/98</u>

I hereby certify that this United States public land survey monument record is correct and complete to the best of my knowledge and belief.

*David M Zieglmeier* Date 8/27/21

David M. Zieglmeier, Anoka County Surveyor  
Minnesota License Number 46179

# HISTORY OF GOVERNMENT CORNER

Page No. 5

County of Anoka

State of Minnesota

## Northeast Corner of Sec. 3 Township 31 Range 22

### **CORNER HISTORY:**

September 30, 1975 – Found 6” Iron Pipe. Established ties to monument.

August 14, 1985 – Found Iron Pipe and updated ties.

May 8, 1989 – Found Iron Pipe and updated ties.

June 12, 1996 – Found Iron Pipe and updated ties.

February 18, 1998 – Found Iron Pipe and established NAD 1983 (1996 Adjustment) Anoka County Project Coordinates by Static GPS methods. Updated ties.

January 10, 2011 – Found 6” Iron Pipe up 7'± leaning to the northeast and updated ties.

January 12, 2017 – Found 6” Iron Pipe up 7'± leaning to the northeast and updated ties.