

CERTIFICATE OF LOCATION OF GOVERNMENT CORNER

County of Anoka

State of Minnesota

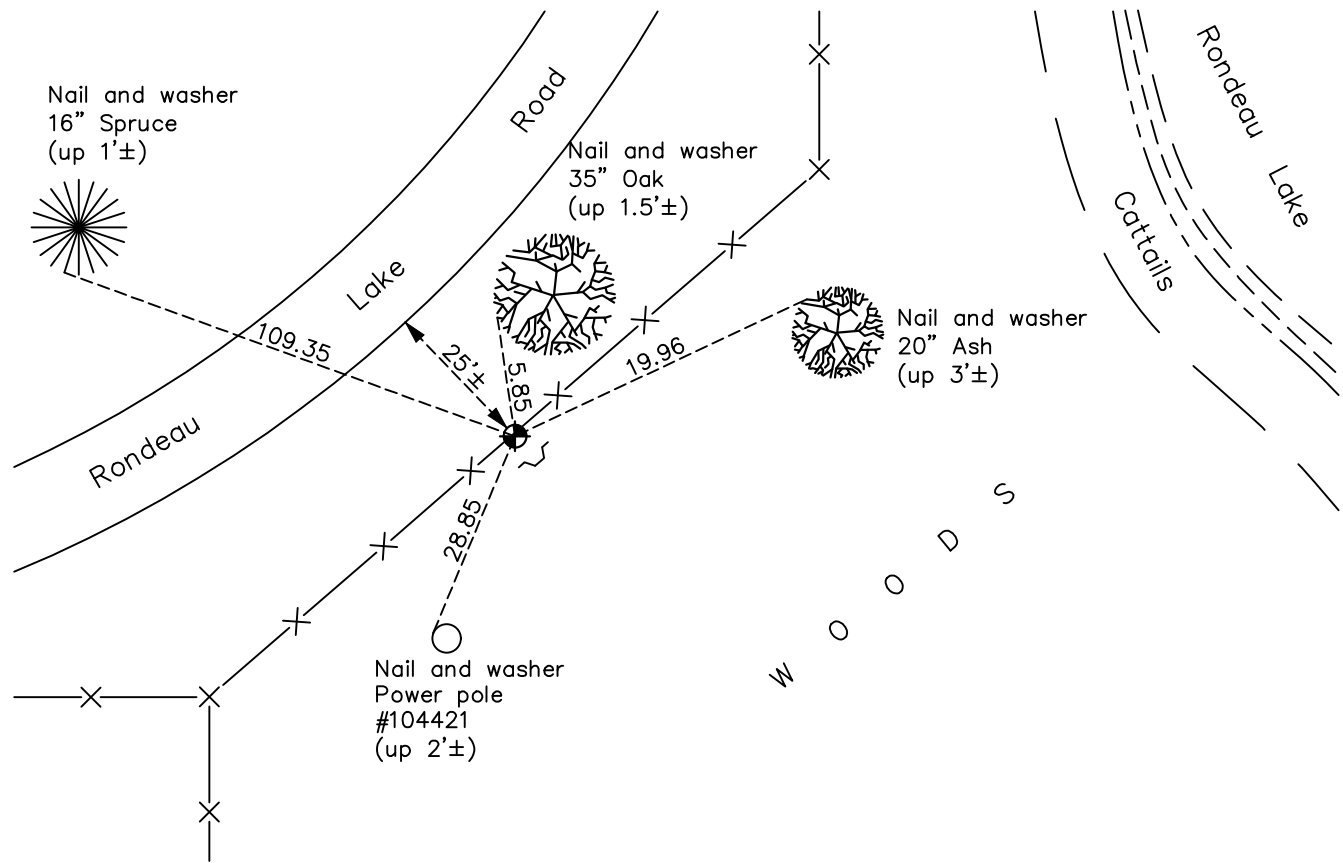
North 1/4 Corner of Sec. 3 Township 31 Range 22

On the 11th day of August, 1969, the described corner was evidenced by a 3/4" iron pipe inside of a 3" iron pipe

and to perpetuate the location of said corner, at the exact location thereof, a permanent marker was placed consisting of a cast iron monument

AND on the 26th day of January, 2023, said permanent marker was found flush with a sign and post on Southeast side, ties were updated and the Coordinates were updated by County RTK GPS

Updated reference ties are as shown below.



N

S

Revision Date

1/30/2023

N.A.D. 1983 Coordinates
(2011 Adjustment)

County Project Coordinates	
Northing	<u>164042.071</u>
Easting	<u>550541.619</u>
Date	<u>1/26/2023</u>

I hereby certify that this United States public land survey monument record is correct and complete to the best of my knowledge and belief.

David Zieglsmeier Date 12/11/23

David M. Zieglsmeier, Anoka County Surveyor
Minnesota License Number 46179

HISTORY OF GOVERNMENT CORNER

Page No. 7

County of Anoka

State of Minnesota

North 1/4 Corner of Sec. 3 Township 31 Range 22

CORNER HISTORY:

May 13, 1963– Found 3” Iron Pipe flush with the surface 4’± South of Oak Witness tree(Corner and tree described by occupant of farm just NW of corner as being used by many surveyors. Found 3/4” pinched Iron Pipe inside 3” Iron Pipe. Established ties to monument.

June 18, 1965 – Found 3” Iron Pipe down 0.5’± and updated ties.

August 11, 1969 – Replaced Iron Pipe with Cast Iron Monument set up 0.1’± under fence after road construction. Updated ties.

July 6, 1973 – Found Cast Iron Monument and updated ties.

May 13, 1977 – Found Cast Iron Monument and updated ties.

August 1, 1980 – Found Cast Iron Monument and updated ties.

July 18, 1986 – Found Cast Iron Monument and updated ties.

March 6, 1989 – Found Cast Iron Monument and updated ties.

June 27, 1991 – Found Cast Iron Monument and updated ties.

June 12, 1996 – Found Cast Iron Monument and updated ties.

February 5, 1998 – Found Cast Iron Monument with sign and post on southeast side and established NAD 1983 (1996 Adjustment) Anoka County Project Coordinates by Static GPS methods. Updated ties.

August 9, 2010 – Found Cast Iron Monument with a sign and post on the southeast side and updated ties.

August 3, 2016 – Found Cast Iron Monument with a sign and post on the southeast side and updated ties.

April 19, 2021 – Found Cast Iron Monument with a sign and post on the southeast side and updated ties.

January 26, 2023 – Found cast iron monument flush, position was verified by County RTK GPS method, ties were updated and reviewed. Position requires Coordinate update to 2011 adjustment. Previous Coordinates NAD 1983 (1996 adj) Northing 164042.2752; Easting 550541.6503