

# CERTIFICATE OF LOCATION OF GOVERNMENT CORNER

County of Anoka

State of Minnesota

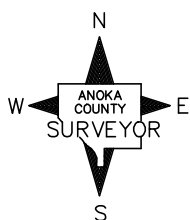
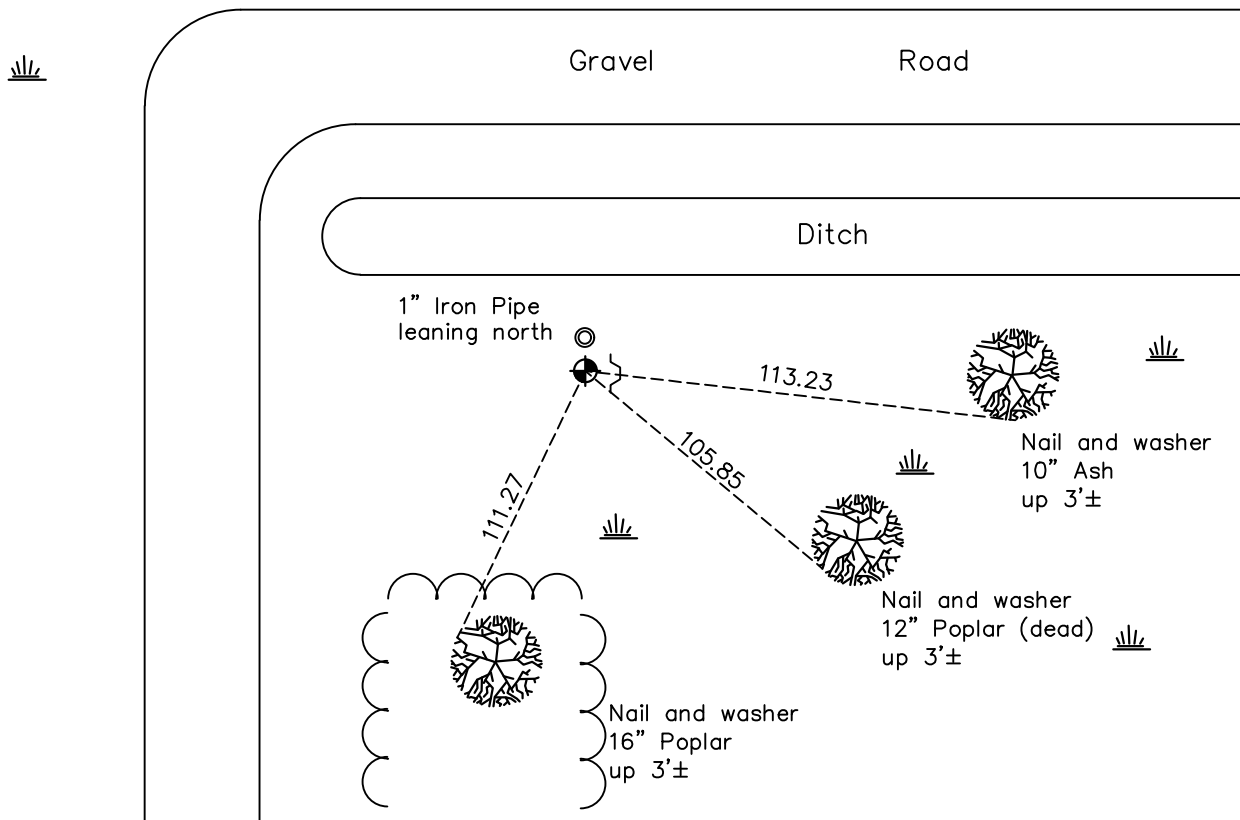
## Northwest Corner of Sec. 3 Township 31 Range 22

On the 3rd day of February, 1964, the described corner was evidenced by a 1/2" iron pipe

and to perpetuate the location of said corner, at the exact location thereof, a permanent marker was placed consisting of a cast iron monument with a sign and post on the east side

AND on the 8th day of June, 2021, said permanent marker was Set 2x2 Telspar w/cap and punchmark up 0.5'± sign and post on East side

Updated reference ties are as shown below.



Revision Date  
7/16/21

N.A.D. 1983 Coordinates  
(1996 Adjustment)

County Project Coordinates	
Northing	<u>164104.3334</u>
Easting	<u>547907.8227</u>
Date	<u>2/05/98</u>

I hereby certify that this United States public land survey monument record is correct and complete to the best of my knowledge and belief.

*David M. Zieglmeier* Date 8/27/21

David M. Zieglmeier, Anoka County Surveyor  
Minnesota License Number 46179

# HISTORY OF GOVERNMENT CORNER

Page No. 8

County of Anoka

State of Minnesota

## Northwest Corner of Sec. 3 Township 31 Range 22

### **CORNER HISTORY:**

February 3, 1964 – Found 3/4” pinched iron pipe down 0.1’ and updated ties.

August 12, 1969 – Set Cast iron monument with steel post up 4’± and updated ties.

July 17, 1973 – Found Cast iron monument with steel post up 4’± and updated ties.

May 13, 1977 – Found Cast iron monument with steel post up 4’± and updated ties.

January 3, 1980 – Found Cast iron monument flush with sign and post on SW side and updated ties.

August 18, 1980 – Found Cast iron monument flush with sign and post on SW side and updated ties.

November 17, 1992 – Found Cast iron monument flush with sign and post on east side and updated ties.

June 20, 1996 – Found Cast iron monument flush with sign and post on east side and updated ties.

February 5, 1998 – Found Cast iron monument flush with sign and post on east side and updated ties.

September 13, 2010 – Found Cast iron monument top broken off with sign and post on east side and updated ties.

June 8, 2021 – Set cast 2x2 Telspar w/cap and punchmark up 0.5± sign and post on East side, verified position with VRS methods. Updated ties.