

CERTIFICATE OF LOCATION OF GOVERNMENT CORNER

County of Anoka

State of Minnesota

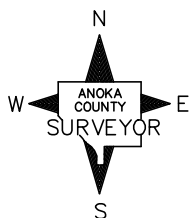
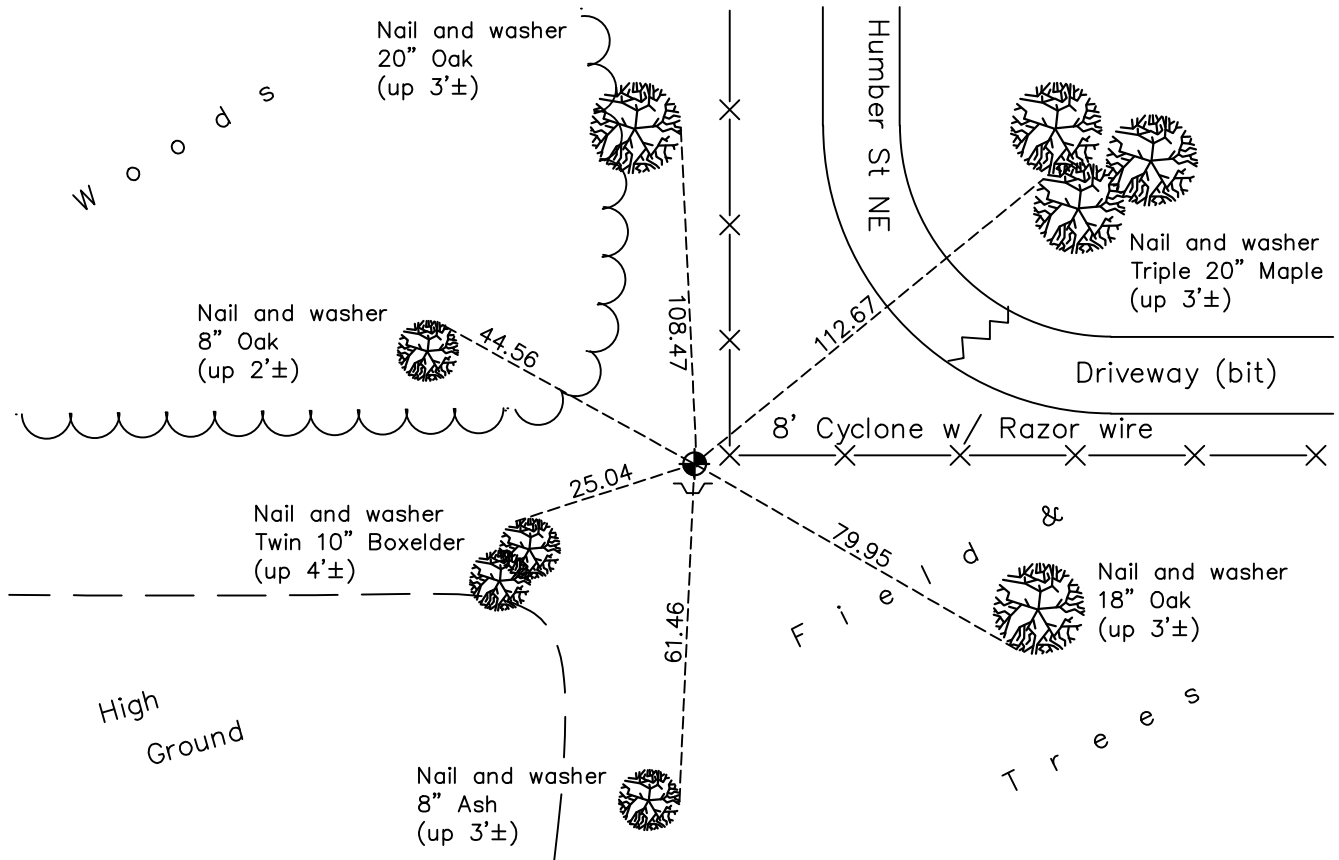
North $\frac{1}{4}$ Corner of Sec. 4 Township 31 Range 22

On the 14th day of May, 1963, the described corner was evidenced by a concrete monument

and to perpetuate the location of said corner, at the exact location thereof, a permanent marker was placed consisting of a cast iron monument with a sign and post on the south side

AND on the 19th day of April, 2021, said permanent marker was found down 0.3'± and the ties were updated

Updated reference ties are as shown below.



Revision Date
7/16/21

N.A.D. 1983 Coordinates
 (1996 Adjustment)

County Project Coordinates	
Northing	<u>164105.4391</u>
Easting	<u>545293.4806</u>
Date	<u>3/05/98</u>

I hereby certify that this United States public land survey monument record is correct and complete to the best of my knowledge and belief.
David M Zieglsmeier Date 8/27/21
David M. Zieglsmeier, Anoka County Surveyor
 Minnesota License Number 46179

HISTORY OF GOVERNMENT CORNER

Page No. 9

County of Anoka

State of Minnesota

North 1/4 Corner of Sec. 4 Township 31 Range 22

CORNER HISTORY:

June 15, 1949 – Baden – Spohn found Concrete Monument flush with the surface. Established ties to monument.

May 14, 1963 – Found Concrete Monument down $0.3'\pm$ with pinched iron pipe on the North side. Updated ties.

June 18, 1965 – Found Concrete Monument flush with the surface with pinched iron pipe on the North side. Updated ties.

August 12, 1969 – Found Concrete Monument flush with the surface with pinched iron pipe on the North side. Updated ties.

July 17, 1973 – Replaced Concrete Monument with Cast Iron Monument set flush with the surface and updated ties.

May 16, 1977 – Found Cast Iron Monument and updated ties.

July 29, 1986 – Found Cast Iron Monument and updated ties.

June 27, 1991 – Found Cast Iron Monument and updated ties.

June 20, 1996 – Found Cast Iron Monument with a steel post on north side and a sign and post on the south side. Updated ties.

March 5, 1998 – Found Cast Iron Monument with a steel post on the north side and a sign and post on the south side. Established NAD 1983 (1996 Adjustment) Anoka County Project Coordinates by Static GPS methods. Updated ties.

September 22, 2010 – Found Cast Iron Monument with a sign and post on the south side and a steel post on north side. Updated ties.

August 3, 2016 – Found Cast Iron Monument down $0.3'\pm$ with a sign and post on the south side and a steel "T" post on north side. Updated ties.

April 19, 2021 – Found Cast Iron Monument down $0.3'\pm$ with a sign and post on the south side, Updated ties.