

CERTIFICATE OF LOCATION OF GOVERNMENT CORNER

County of Anoka

State of Minnesota

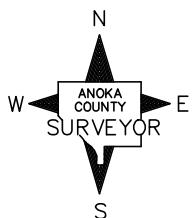
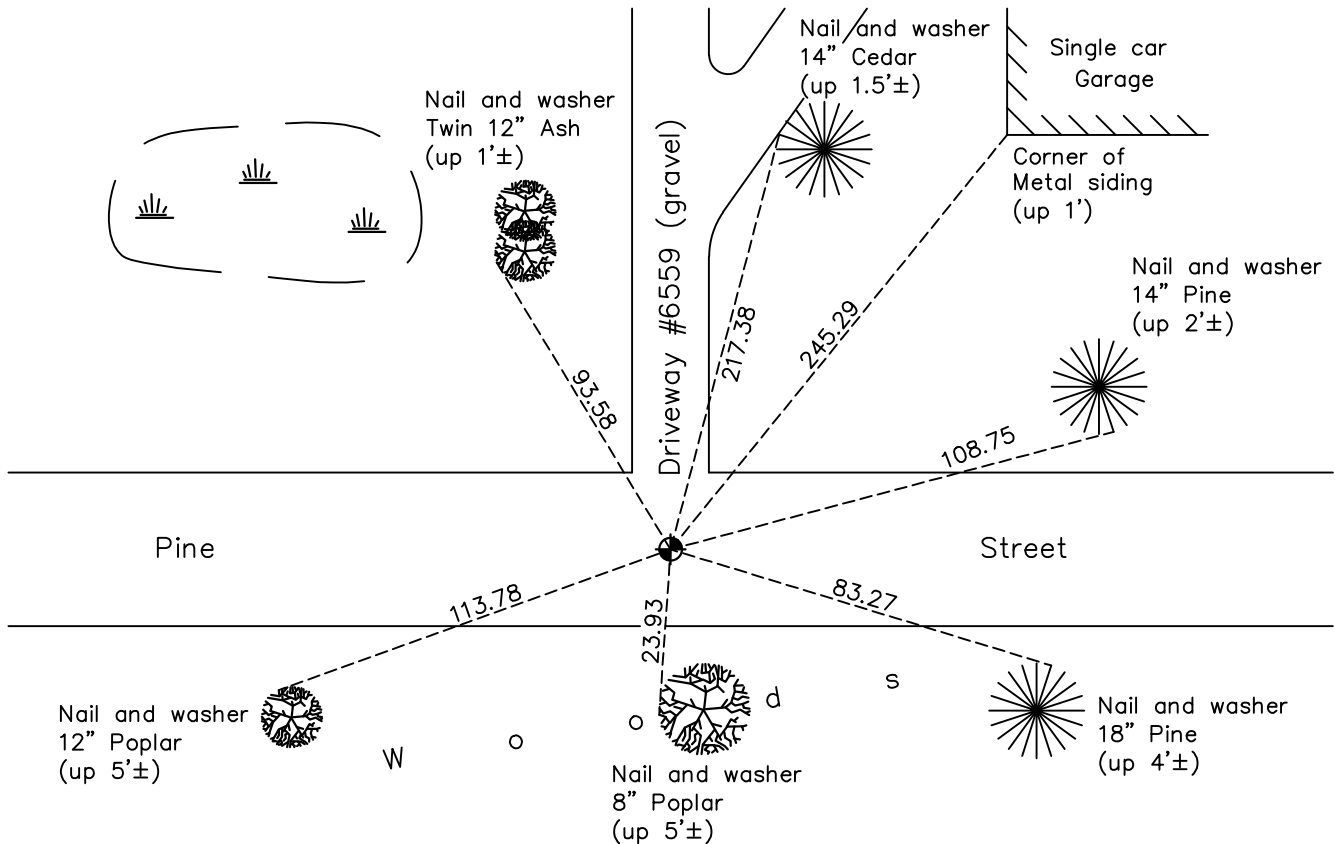
Northeast Corner of Sec. 5 Township 31 Range 22

On the 13th day of May, 1963, the described corner was evidenced by a concrete monument

and to perpetuate the location of said corner, at the exact location thereof, a permanent marker was placed consisting of a cast iron monument set on top of the concrete monument (down 1'±)

AND on the 19th day of April, 2021, said permanent marker was found flush with the surface on top of the existing CIM

Updated reference ties are as shown below.



Revision Date
7/16/21

N.A.D. 1983 Coordinates
 (1996 Adjustment)

County Project Coordinates	
Northing	<u>164099.8276</u>
Easting	<u>542645.5112</u>
Date	<u>3/02/98</u>

I hereby certify that this United States public land survey monument record is correct and complete to the best of my knowledge and belief.
David M Zieglermeier Date 8/27/21
 David M. Zieglermeier, Anoka County Surveyor
 Minnesota License Number 46179

HISTORY OF GOVERNMENT CORNER

County of Anoka

State of Minnesota

Northeast Corner of Sec. 5 Township 31 Range 22

CORNER HISTORY:

September 6, 1943 – Cartwright found concrete monument and established ties to monument.

May 13, 1963 – Found 4" square concrete monument down 17"± with an iron pipe on north side. Set iron pipe down 0.1'± and established ties to iron pipe. Monument is 0.72' west and 0.47' north of a hub set by Milner Carley Associates as the approximate section corner.

June 18, 1965 – Found concrete monument and updated ties to iron pipe.

August 13, 1969 – Found concrete monument down 17"± and set cast iron monument down 0.4'± on top of concrete monument. Updated ties.

June 14, 1973 – Found cast iron monument and updated ties.

May 17, 1976 – Found cast iron monument and updated ties.

April 17, 1979 – Found cast iron monument, lowered it and updated ties.

July 30, 1980 – Found cast iron monument and updated ties.

July 14, 1986 – Found cast iron monument and updated ties.

June 27, 1991 – Found cast iron monument and updated ties.

March 2, 1998– Found cast iron monument and established NAD 1983 (1996 Adjustment) Anoka County Project Coordinates by Static GPS methods. Updated ties.

July 29, 2010 – Found cast iron monument down 1.4'± and updated ties.

August 3, 2016 – Found cast iron monument down 1.4'± and updated ties.

August 7, 2017 – Found cast iron monument down 1.4'± and set a partial cast iron monument flush with the surface on top of existing CIM. Verified location of corner by VRS GPS methods. Updated ties.

April 19, 2021 – Found cast iron monument flush, verified location by VRS GPS Methods, and updated ties.