

CERTIFICATE OF LOCATION OF GOVERNMENT CORNER

County of Anoka

State of Minnesota

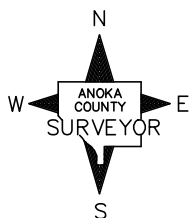
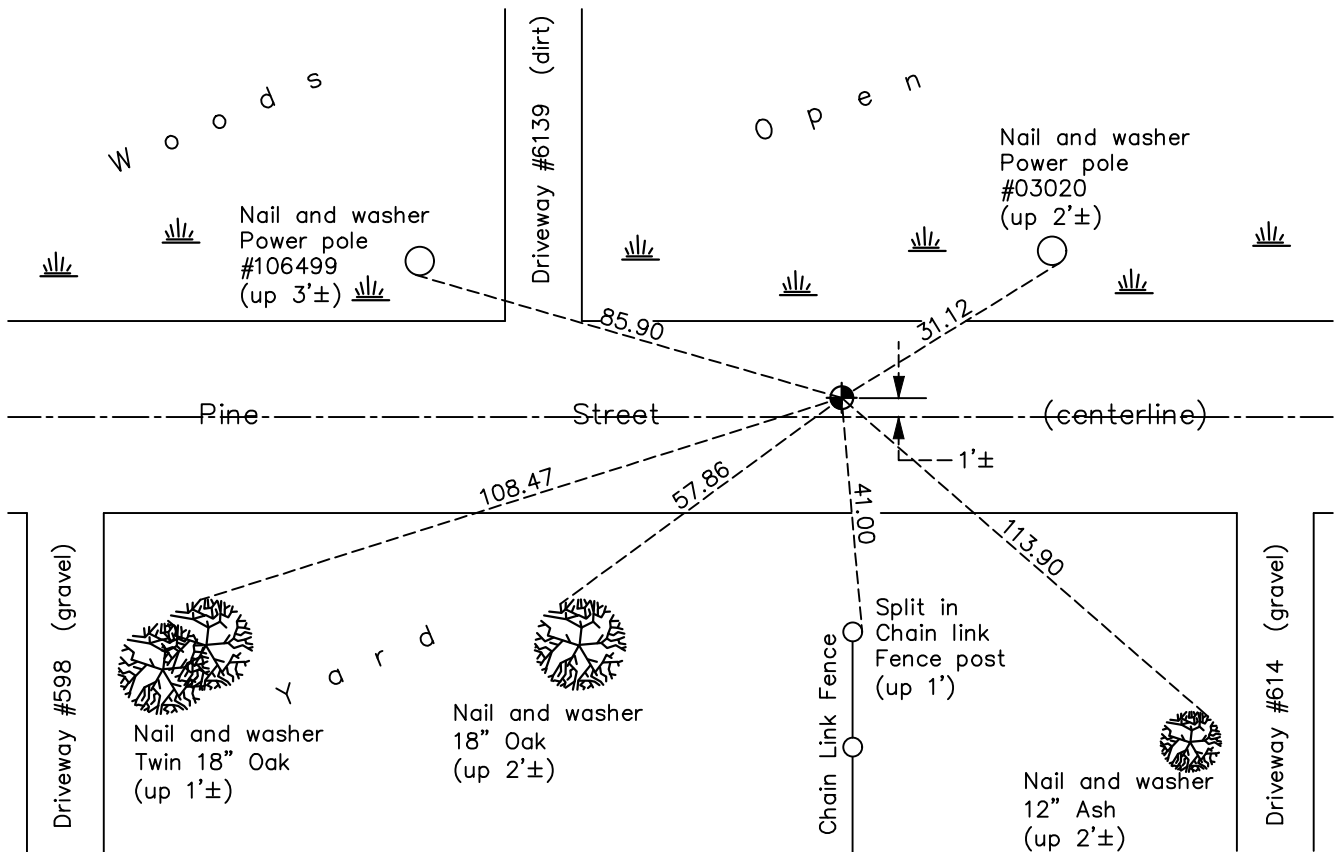
North 1/4 Corner of Sec. 5 Township 31 Range 22

On the 17th day of May, 1963, the described corner was evidenced by a concrete monument

and to perpetuate the location of said corner, at the exact location thereof, a permanent marker was placed consisting of a cast iron monument

AND on the 19th day of April, 2021, said permanent marker was found CIM flush with the surface on top of existing CIM and updated ties.

Updated reference ties are as shown below.



Revision Date
 7/16/21

N.A.D. 1983 Coordinates
 (1996 Adjustment)

County Project Coordinates	
Northing	164102.2607
Easting	540028.6503
Date	5/02/98

I hereby certify that this United States public land survey monument record is correct and complete to the best of my knowledge and belief.
David M Zieglermeier Date 8/27/21
 David M. Zieglermeier, Anoka County Surveyor
 Minnesota License Number 46179

HISTORY OF GOVERNMENT CORNER

Page No. 11

County of Anoka

State of Minnesota

North 1/4 Corner of Sec. 5 Township 31 Range 22

CORNER HISTORY:

September 6, 1943 – Cartwright found concrete monument and established ties to monument.

March 14, 1962 – Found all ties missing.

May 17, 1963 – Found 4" square concrete monument down 0.2'±. Set 3/4" iron pipe on north side of monument and updated ties.

June 18, 1965 – Found concrete monument down 0.5'± and updated ties.

August 12, 1969 – Found concrete monument down 0.2'± and updated ties.

June 14, 1973 – Replaced concrete monument with a cast iron monument set down 0.5'±. Updated ties.

August 17, 1976 – Found cast iron monument and updated ties.

April 18, 1979 – Replaced broken cast iron monument with a new cast iron monument and updated ties.

July 14, 1986 – Found cast iron monument and updated ties.

August 30, 1991 – Found cast iron monument and updated ties.

June 19, 1996 – Found cast iron monument down 1'± and updated ties.

May 2, 1998 – Found cast iron monument and established NAD 1983 (1996 Adjustment) Anoka County Project Coordinates by Static GPS methods. Updated ties.

July 26, 2010 – Found cast iron monument with a 1" iron pipe on top of the cast iron monument and updated ties.

September 13, 2016 – Found cast iron monument with a 1/2" iron pipe on top of the cast iron monument and updated ties.

August 7, 2017 – Found cast iron monument and set a partial cast iron monument flush with the surface on top of the existing cast iron monument. Verified location of corner by VRS GPS methods and updated ties.

April 19, 2021 – Found cast iron monument flush with the surface on top of the existing cast iron monument. Verified location of corner by VRS GPS methods and updated ties.