

CERTIFICATE OF LOCATION OF GOVERNMENT CORNER

County of Anoka

State of Minnesota

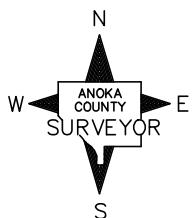
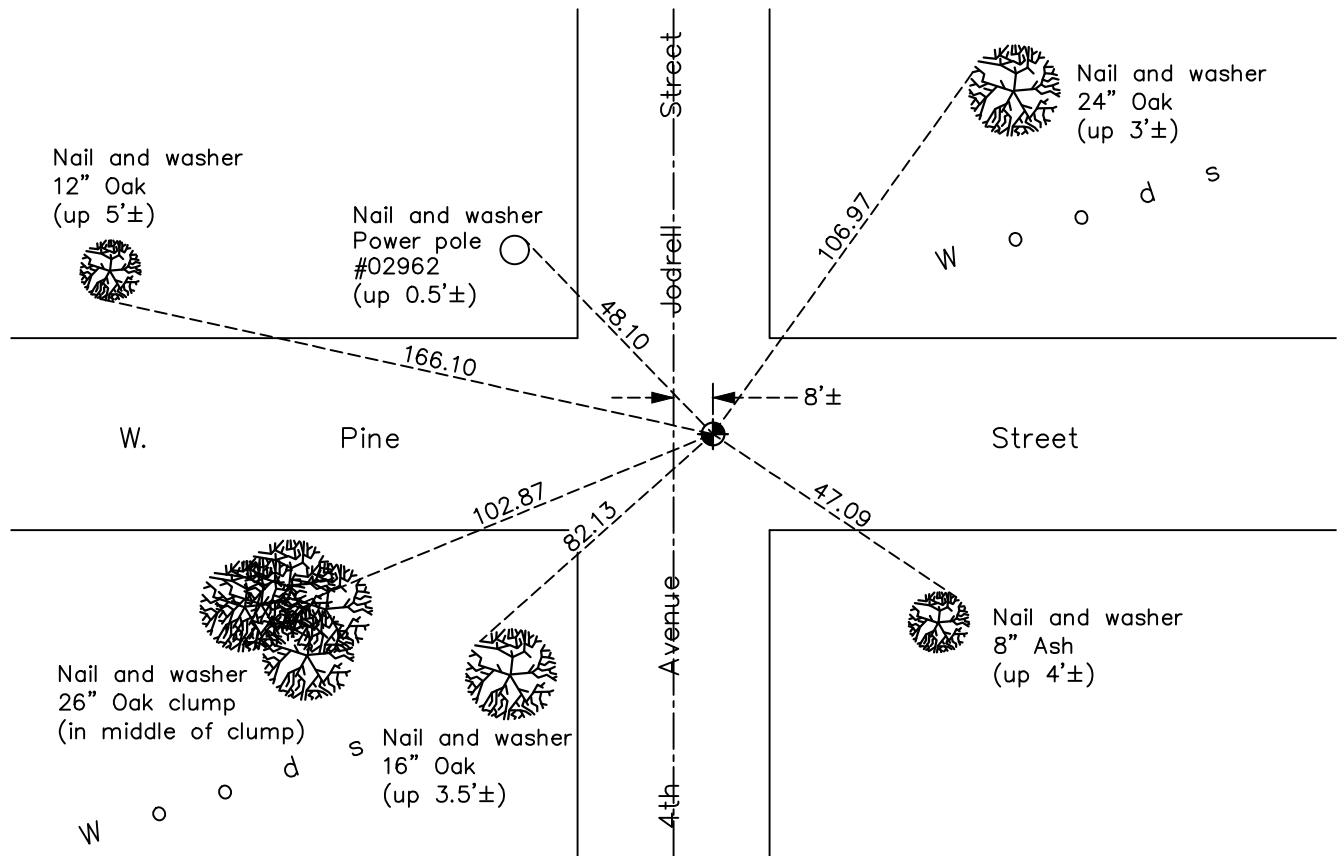
Northwest Corner of Sec. 5 Township 31 Range 22

On the 13th day of March, 1962, the described corner was evidenced by a concrete monument

and to perpetuate the location of said corner, at the exact location thereof, a permanent marker was placed consisting of a cast iron monument

AND on the 23rd day of April, 2021, said permanent marker was found CIM flush with surface on top of existing CIM and updated ties.

Updated reference ties are as shown below.



Revision Date
7/16/21

N.A.D. 1983 Coordinates
(1996 Adjustment)

County Project Coordinates	
Northing	<u>164105.2266</u>
Easting	<u>537412.0504</u>
Date	<u>3/02/98</u>

I hereby certify that this United States public land survey monument record is correct and complete to the best of my knowledge and belief.

David M Zieglermeier Date 8/27/21

David M. Zieglermeier, Anoka County Surveyor
Minnesota License Number 46179

HISTORY OF GOVERNMENT CORNER

Page No. 12

County of Anoka

State of Minnesota

Northwest Corner of Sec. 5 Township 31 Range 22

CORNER HISTORY:

September 6, 1943 – Cartwright found concrete monument and established ties to monument.

March 13, 1962 – Replaced broken concrete monument down 0.2'± with a cast iron monument set down 0.5'± and updated ties.

June 17, 1965 – Found cast iron monument and updated ties.

December 30, 1966 – Robert L. Smith said that corner always existed 12–15 feet north of centerline of road. He said that the corner was moved south.

August 13, 1969 – Found cast iron monument and updated ties.

June 14, 1973 – Found cast iron monument and updated ties.

August 17, 1976 – Found cast iron monument and updated ties.

June 27, 1991 – Found cast iron monument and updated ties.

June 19, 1996 – Found cast iron monument down 1.5'± and updated ties.

March 2, 1998 – Found cast iron monument and established NAD 1983 (1996 Adjustment) Anoka County Project Coordinates by Static GPS methods. Updated ties.

June 18, 2010 – Found cast iron monument with an iron pipe on top of the cast iron monument and updated ties.

September 21, 2016 – Found cast iron monument, needs to be raised, and updated ties. Set P.K. nails 2.00' north and east of monument. Verified location of corner by VRS GPS methods.

August 7, 2017 – Removed iron pipe, found cast iron monument and set a partial cast iron monument on top of existing cast iron monument. Verified location of corner by VRS GPS methods and updated ties.

April 23, 2021 – found cast iron monument flush with surface, Verified location of corner by VRS GPS methods and updated ties.