

# CERTIFICATE OF LOCATION OF GOVERNMENT CORNER

County of Anoka

State of Minnesota

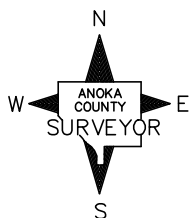
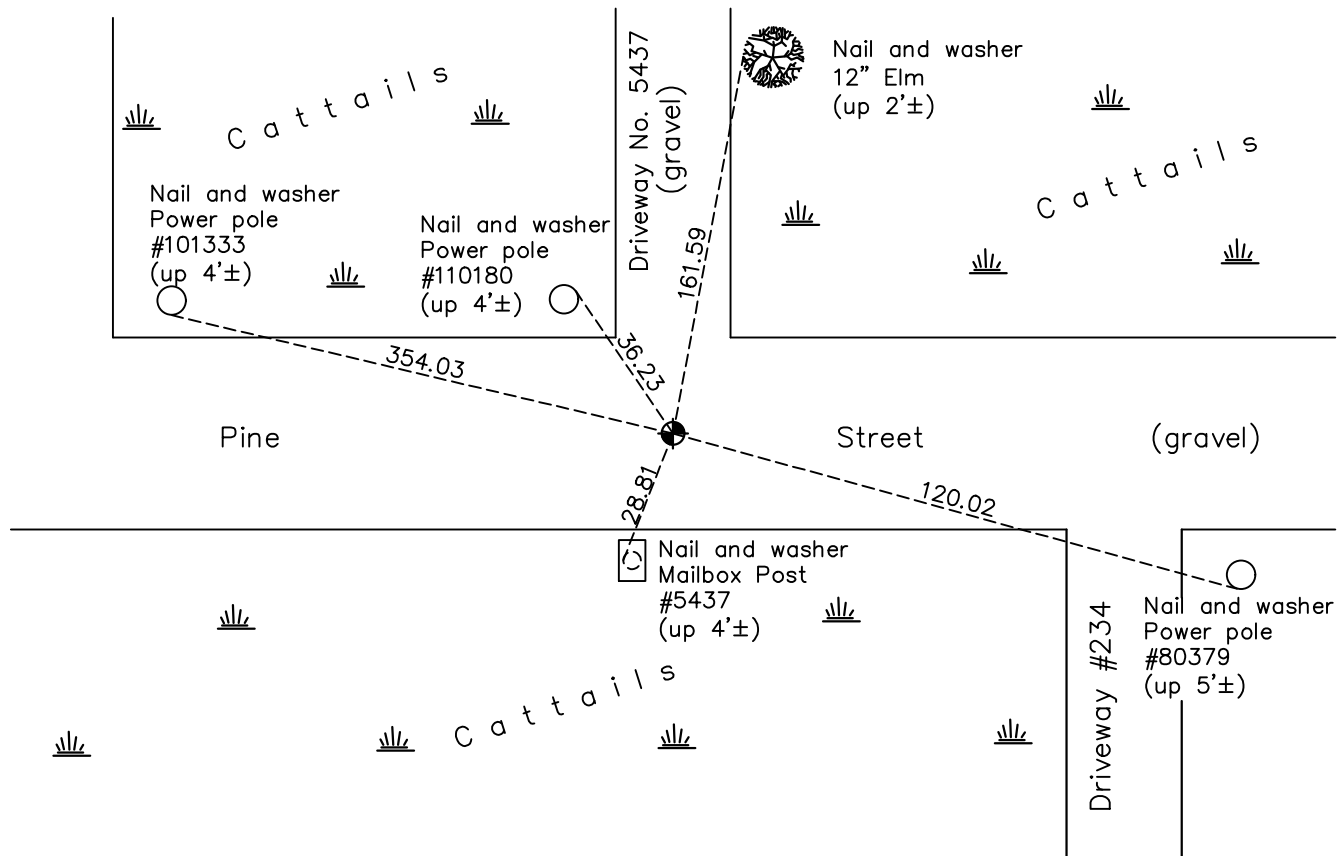
## North 1/4 Corner of Sec. 6 Township 31 Range 22

On the 21st day of July, 1969, the described corner was evidenced by a 3/4" iron pipe set by Jim Kurth

and to perpetuate the location of said corner, at the exact location thereof, a permanent marker was placed consisting of a cast iron monument

AND on the 19th day of April, 2021, said permanent marker was found down 0.1'± and ties were updated

Updated reference ties are as shown below.



Revision Date  
7/16/21

N.A.D. 1983 Coordinates  
 (1996 Adjustment)

County Project Coordinates	
Northing	<u>164108.4597</u>
Easting	<u>534780.0262</u>
Date	<u>3/02/98</u>

I hereby certify that this United States public land survey monument record is correct and complete to the best of my knowledge and belief.  
*David M Zieglmeier* Date 8/27/21  
David M. Zieglmeier, Anoka County Surveyor  
 Minnesota License Number 46179

# HISTORY OF GOVERNMENT CORNER

Page No. 13

County of Anoka

State of Minnesota

## North 1/4 Corner of Sec. 6 Township 31 Range 22

### **CORNER HISTORY:**

August 8, 1968 – Jim Kurth set 3/4" Iron Pipe down 0.4'. Established ties to monument.

July 21, 1969– Replaced Iron Pipe with Cast Iron Monument down 0.6'±. Updated ties.

August 17, 1976– Found Cast Iron Monument and updated ties.

June 27, 1991– Found Cast Iron Monument and updated ties.

May 1, 1992 – Replaced Cast Iron Monument, 1'± South of centerline, and updated ties.

June 19, 1996– Found Cast Iron Monument 1'± South of centerline and updated ties.

March 2, 1998– Found Cast Iron Monument 1'± South of centerline and established NAD 1983 (1996 Adjustment) Anoka County Project Coordinates by Static GPS methods. Updated ties.

July 26, 2010 – Found Cast Iron Monument down 0.2'± and leaning slightly south. Updated ties.

April 5, 2011 – Replaced cast iron monument with an extendible cast iron monument down 0.6'± and updated ties. Verified location of corner by VRS GPS methods.

September 21, 2016– Found Cast Iron Monument down 0.6'± and updated ties. Verified location of corner by VRS GPS methods. Updated ties.

April 19, 2021 – Found Cast Iron Monument down 0.1'± and updated ties. Verified location of corner by VRS GPS methods. Updated ties.