

CERTIFICATE OF LOCATION OF GOVERNMENT CORNER

County of Anoka

State of Minnesota

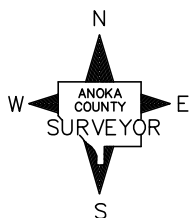
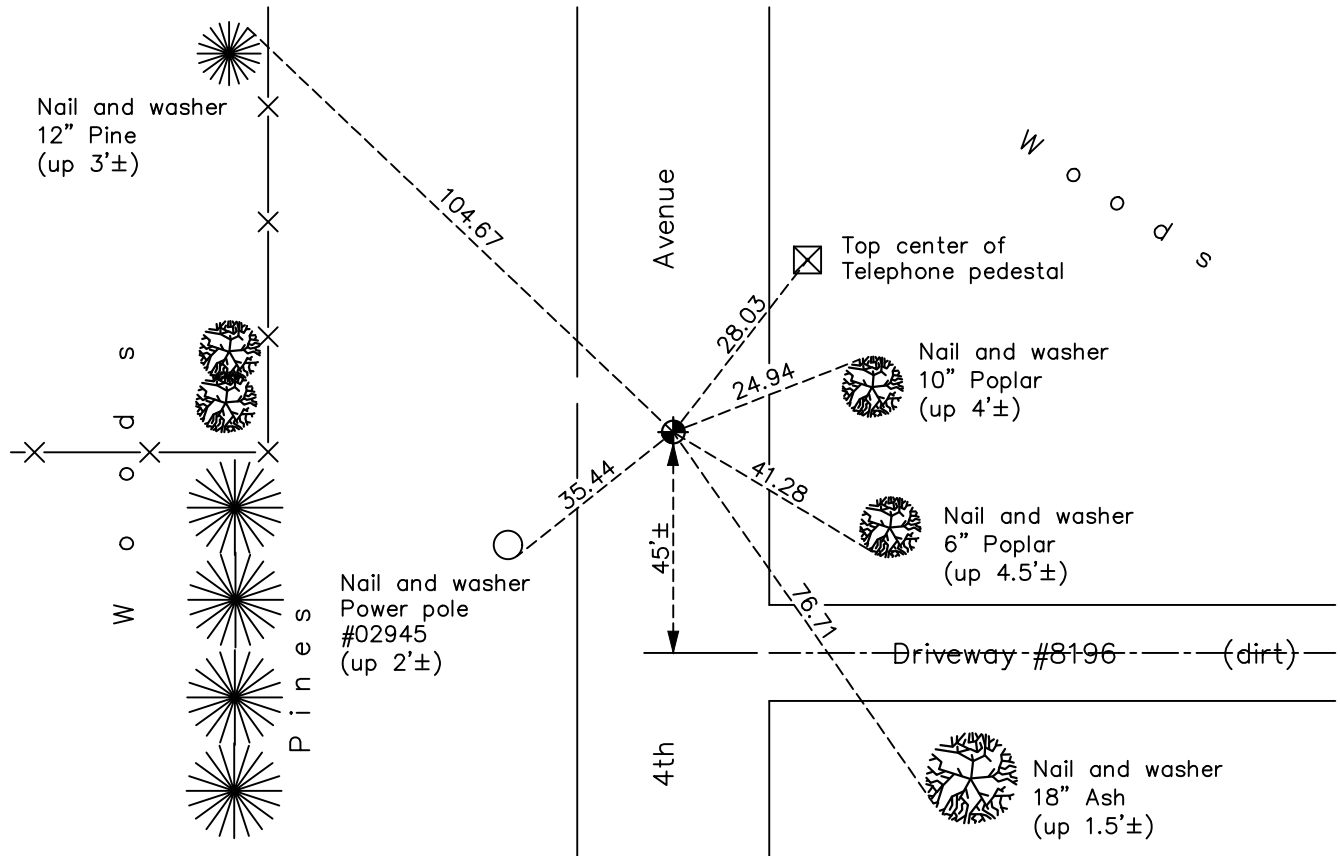
West 1/4 Corner of Sec. 5 Township 31 Range 22

On the 20th day of May, 1963, the described corner was evidenced by area resurvey

and to perpetuate the location of said corner, at the exact location thereof, a permanent marker was placed consisting of a cast iron monument

AND on the 23rd day of April, 2021, said permanent marker was Replaced CIM flush with surface, after construction and the ties were updated

Updated reference ties are as shown below.



N.A.D. 1983 Coordinates
(1996 Adjustment)

County Project Coordinates

Northing 161565.1302

Easting 537327.3189

Date 1/26/98

Revision Date

7/16/21

I hereby certify that this United States public land survey monument record is correct and complete to the best of my knowledge and belief.

David M Zieglermeier Date 8/27/21

David M. Zieglermeier, Anoka County Surveyor

Minnesota License Number 46179

HISTORY OF GOVERNMENT CORNER

Page No. 16

County of Anoka

State of Minnesota

West 1/4 Corner of Sec. 5 Township 31 Range 22

CORNER HISTORY:

May 20, 1963 – Set Cast Iron monument down 0.6'± using area resurvey and established ties to monument.

June 17, 1965 – Found Cast Iron Monument and updated ties.

August 13, 1969 – Found Cast Iron Monument and updated ties.

June 14, 1973 – Replaced Cast Iron Monument with extendible Cast Iron Monument and updated ties.

August 17, 1976 – Found Cast Iron Monument and updated ties.

July 30, 1980 – Found Cast Iron Monument and updated ties.

June 2, 1983 – Found Cast Iron Monument and updated ties.

July 18, 1986 – Found Cast Iron Monument and updated ties.

March 6, 1989 – Found Cast Iron Monument and updated ties.

June 28, 1991 – Found Cast Iron Monument and updated ties.

January 26, 1998 – Found Cast Iron Monument and established NAD 1983 (1996 Adjustment) Anoka County Project Coordinates by Static GPS methods. Updated ties.

June 17, 2010 – Found Cast Iron Monument flush with the surface and updated ties.

September 21, 2016 – Found Cast Iron Monument flush with the surface and updated ties. Verified location of corner by VRS GPS methods.

April 23, 2021 – Replaced Cast Iron Monument flush with the surface after construction and updated ties. Verified location of corner by VRS GPS methods.