

CERTIFICATE OF LOCATION OF GOVERNMENT CORNER

County of Anoka

State of Minnesota

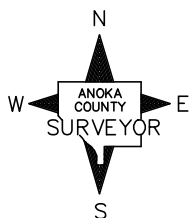
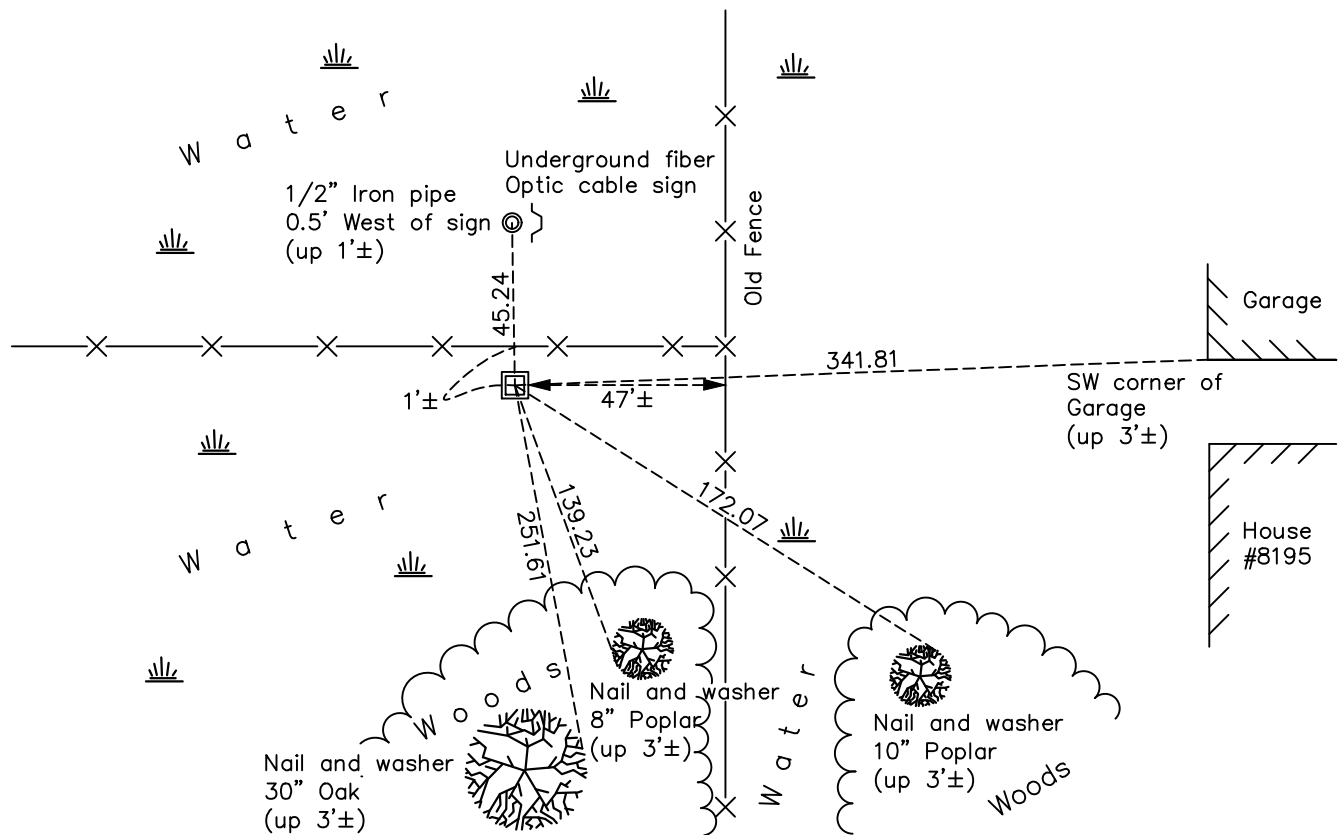
East 1/4 Corner of Sec. 5 Township 31 Range 22

On the 10th day of August, 1961, the described corner was evidenced by a 1/2" iron pipe

and to perpetuate the location of said corner, at the exact location thereof, a permanent marker was placed consisting of a red and white 2" square steel Telspar monument up 3'± with a sign attached

AND on the 12th day of January, 2016, said permanent marker was found and the ties were updated

Updated reference ties are as shown below.



Revision Date
6/22/17

N.A.D. 1983 Coordinates
(1996 Adjustment)

County Project Coordinates	
Northing	<u>161506.7037</u>
Easting	<u>542561.2795</u>
Date	<u>3/02/98</u>

I hereby certify that this United States public land survey monument record is correct and complete to the best of my knowledge and belief.

David M Zieglsmeier Date 8/27/21

David M. Zieglsmeier, Anoka County Surveyor
Minnesota License Number 46179

HISTORY OF GOVERNMENT CORNER

Page No. 17

County of Anoka

State of Minnesota

East 1/4 Corner of Sec. 5 Township 31 Range 22

CORNER HISTORY:

August 10, 1961 – R. N. Knudsen found Iron Pipe 0.5'± north of east–west fence. Established ties to monument.

June 18, 1965 – Found Iron Pipe and updated ties.

January 14, 1974 – Found Iron Pipe and updated ties.

June 15, 1978 – Found Iron Pipe and updated ties.

June 28, 1991 – Found Iron Pipe and updated ties.

June 13, 1996 – Found Iron Pipe and updated ties.

March 2, 1998 – Found red and white Iron Pipe up 3'± and established NAD 1983 (1996 Adjustment) Anoka County Project Coordinates by Static GPS methods. Updated ties.

January 10, 2011 – Found red and white 2" square steel Telspar monument up 3'± with a sign attached. Updated ties.

January 12, 2016 – Found red and white 2" square steel Telspar monument up 3'± with a sign attached. Updated ties.