

CERTIFICATE OF LOCATION OF GOVERNMENT CORNER

County of Anoka

State of Minnesota

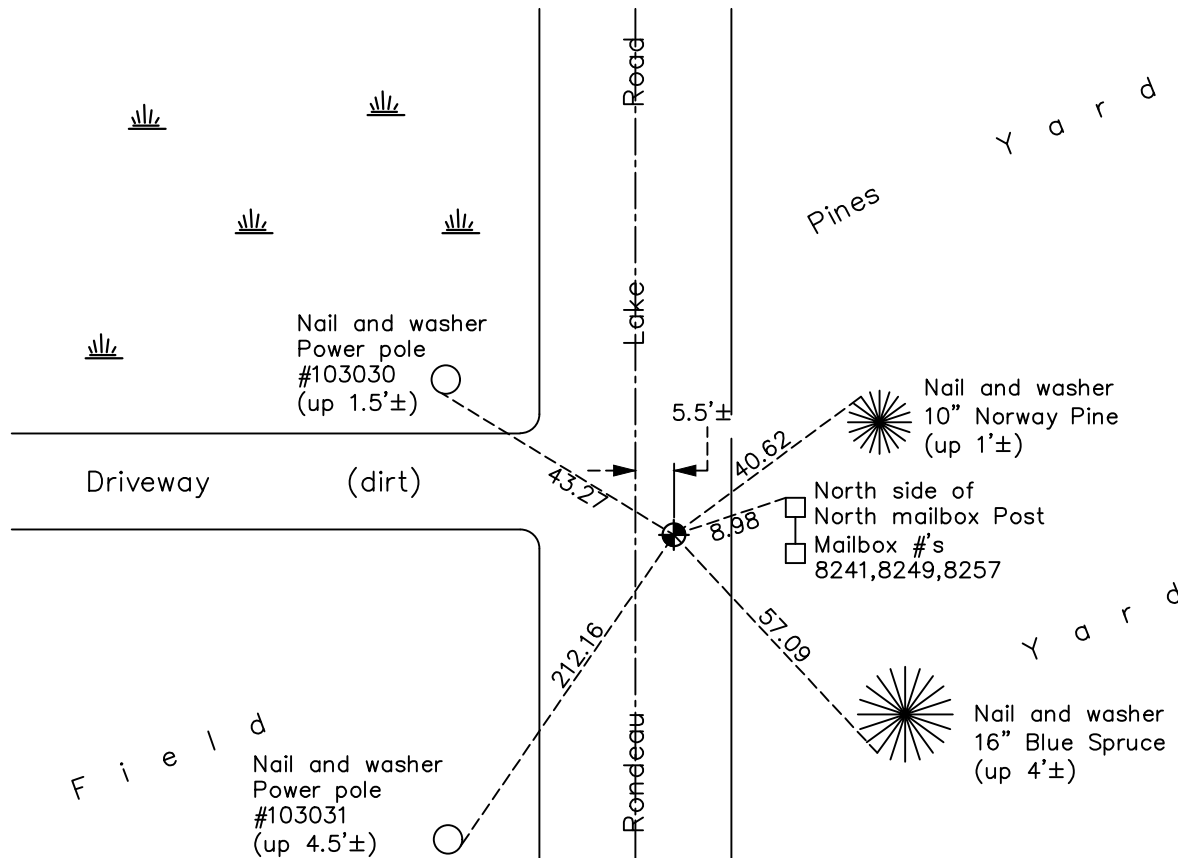
West 1/4 Corner of Sec. 3 Township 31 Range 22

On the 18th day of June, 1965, the described corner was evidenced by a 1/2" iron pipe

and to perpetuate the location of said corner, at the exact location thereof, a permanent marker was placed consisting of a cast iron monument

AND on the 5th day of October, 2022, said permanent marker was Raised CIM top to the surface after road overlay. Verified position by RTK GPS method.

Updated reference ties are as shown below.



N.A.D. 1983 Coordinates
(1996 Adjustment)

County Project Coordinates	
Northing	<u>161463.6889</u>
Easting	<u>547823.6269</u>
Date	<u>2/05/98</u>

Revision Date
3/9/2023

I hereby certify that this United States public land survey monument record is correct and complete to the best of my knowledge and belief.

David Zieglermeier Date 12/11/23

David M. Zieglermeier, Anoka County Surveyor
 Minnesota License Number 46179

HISTORY OF GOVERNMENT CORNER

Page No. 18

County of Anoka

State of Minnesota

West 1/4 Corner of Sec. 3 Township 31 Range 22

CORNER HISTORY:

March 10, 1950 - Jackson found Iron Pipe. Established ties to monument.

May 11, 1961- Monument not found. Updated ties.

June 18, 1965 - Found 1/2" Iron Pipe down 0.5'± using Jackson's ties. Pipe does not appear to be as old as ties.

August 11, 1969 - Replaced 1/2" Iron Pipe down 0.8'± with Cast Iron Monument set flush with the surface and 5.5'± east of centerline. Updated ties.

May 16, 1977 - Set Cast Iron Monument flush with the surface using ties and updated ties. Set P.K. nails 2.00' north and east of monument.

August 1, 1980 - Found Cast Iron Monument and updated ties.

November 17, 1992 - Found Cast Iron Monument and updated ties.

June 12, 1996 - Found Cast Iron Monument and updated ties.

February 5, 1998 - Found Cast Iron Monument and established NAD 1983 (1996 Adjustment) Anoka County Project Coordinates by Static GPS methods. Updated ties.

June 15, 2010 - Found Cast Iron Monument flush with the surface and updated ties.

September 22, 2016 - Found cast iron monument flush. Verified position by VRS GPS methods. Updated ties.

April 19, 2021 - Found cast iron monument flush. Verified position by VRS GPS methods. Updated ties.

May 20, 2022 - Found cast iron monument. Verified position by VRS GPS method. Removed top for construction overlay.

October 5, 2022 - Raised cast iron monument to surface after overlay. Verified position by VRS GPS method.