

CERTIFICATE OF LOCATION OF GOVERNMENT CORNER

County of Anoka

State of Minnesota

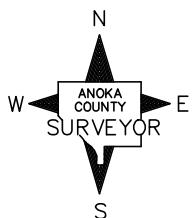
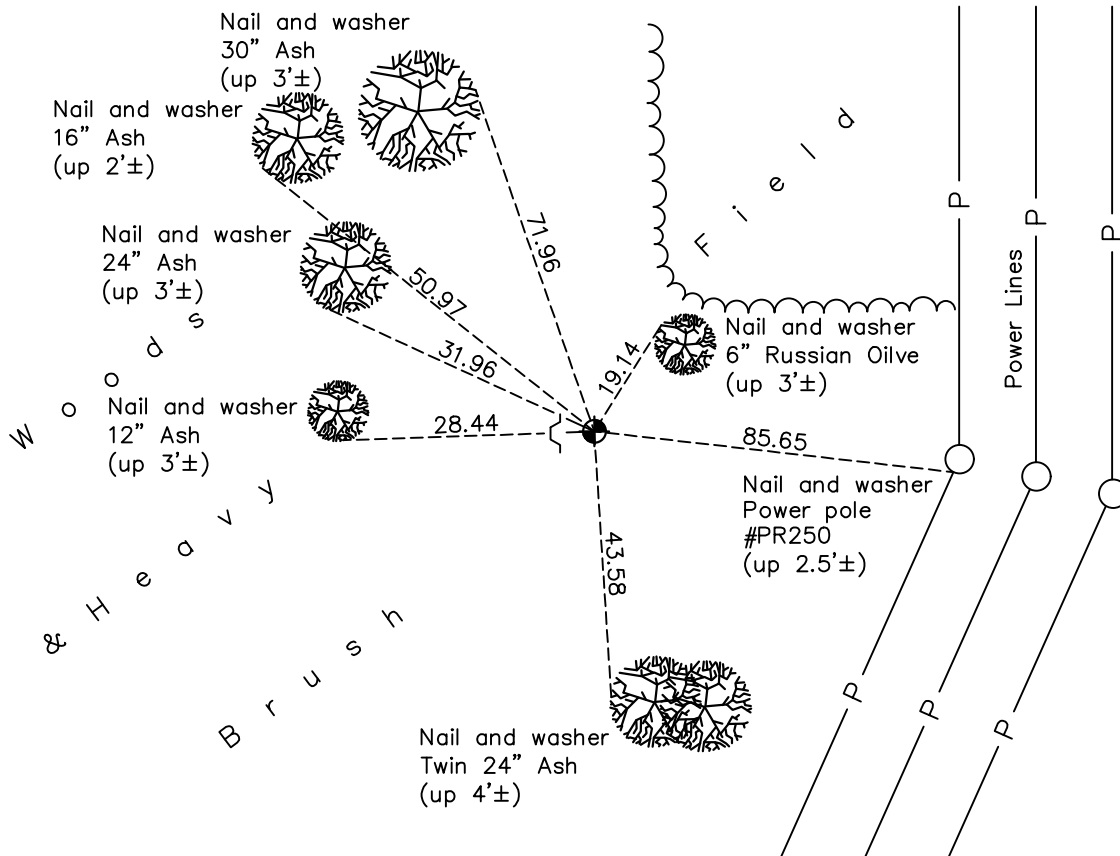
East 1/4 Corner of Sec. 2 Township 31 Range 22

On the 12th day of June, 1962, the described corner was evidenced by a 4" square concrete monument

and to perpetuate the location of said corner, at the exact location thereof, a permanent marker was placed consisting of a cast iron monument with a sign and post on the west side

AND on the 17th day of May, 2021, said permanent marker was found flush with the surface and the ties were updated

Updated reference ties are as shown below.



Revision Date
7/23/21

N.A.D. 1983 Coordinates
 (1996 Adjustment)

| County Project Coordinates | |
|----------------------------|--------------------|
| Northing | <u>161507.3183</u> |
| Easting | <u>558325.1321</u> |
| Date | <u>4/10/98</u> |

I hereby certify that this United States public land survey monument record is correct and complete to the best of my knowledge and belief.
David M Zieglermeier Date 7/28/21
David M. Zieglermeier, Anoka County Surveyor
 Minnesota License Number 46179

HISTORY OF GOVERNMENT CORNER

Page No. 20

County of Anoka

State of Minnesota

East 1/4 Corner of Sec. 2 Township 31 Range 22

CORNER HISTORY:

September 7, 1948 – Cartwright found Concrete monument. Established ties to monument.

June 12, 1962 – Found 4” Square Concrete monument leaning. Straightened and checked ties. 1.25” Iron Pipe on north side. Updated ties.

August 4, 1969 – Replaced leaning Concrete monument with a Cast Iron monument up 0.1’±. 1.25” Iron Pipe on south side up 1.5’± Updated ties.

July 2, 1973 – Found Cast Iron monument and updated ties.

May 16, 1977 – Found Cast Iron monument and updated ties.

August 5, 1980 – Found Cast Iron monument and updated ties.

December 25, 1990 – Found Cast Iron monument and updated ties.

November 13, 1991 – Found Cast Iron monument with a sign and post on the west side and updated ties.

April 10, 1998 – Found Cast Iron monument with a sign and post on the west side and established NAD 1983 (1996 Adjustment) Anoka County Project Coordinates by Static GPS methods. Updated ties.

September 29, 2010 – Found Cast Iron monument flush with the surface and updated ties.

October 10, 2016 – Found Cast Iron monument flush with the surface and updated ties. Found sign and post on west side.

May 17, 2021 – Found Cast Iron monument flush with the surface and updated ties. Verified location of corner by VRS GPS methods