

# CERTIFICATE OF LOCATION OF GOVERNMENT CORNER

County of Anoka

State of Minnesota

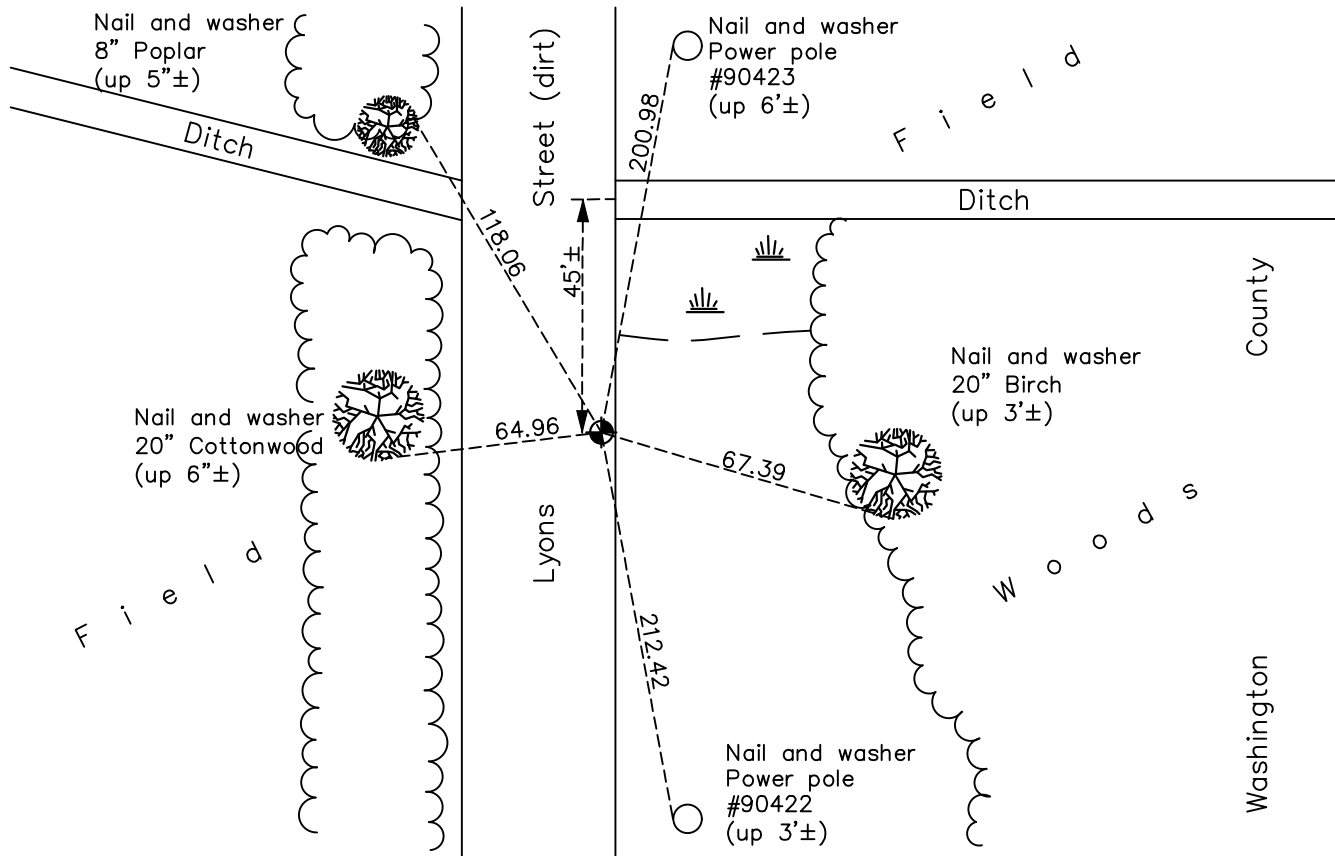
## East 1/4 Corner of Sec. 1 Township 31 Range 22

On the 15th day of August, 1979, the described corner was evidenced by a Washington County monument

and to perpetuate the location of said corner, at the exact location thereof, a permanent marker was placed consisting of the same Washington County monument

AND on the 26th day of May, 2023, said permanent marker was found (down 1.5'±), leaning, and broken. Set new CIM (down 0.70'±) using ACS RTK GPS method, then updated ties.

Updated reference ties are as shown below.



Revision Date

5/30/2023

N.A.D. 1983 Coordinates  
(1996 Adjustment)

County Project Coordinates	
Northing	<u>161466.5995</u>
Easting	<u>563618.4567</u>
Date	<u>2/25/98</u>

I hereby certify that this United States public land survey monument record is correct and complete to the best of my knowledge and belief.

*David Zieglmeier* Date 12/11/23

David M. Zieglmeier, Anoka County Surveyor  
Minnesota License Number 46179

# HISTORY OF GOVERNMENT CORNER

Page No. 21

County of Anoka

State of Minnesota

## East 1/4 Corner of Sec. 1 Township 31 Range 22

### **CORNER HISTORY:**

April 9, 1974– Found Washington County Cast Iron monument. Established ties to monument.

August 3, 1979 – Corner and ties missing.

August 15, 1979 – Paul A. Johnson, Washington Co Surveyor set Washington County Cast Iron Monument flush with the surface using NW and SW corners and proportionate distances. Established ties to monument.

March 16, 1987– Found Washington County Cast Iron monument down 0.5'± and leaning. Straightened and updated ties. Sign and post on the east side.

October 17, 1996– Found Washington County Cast Iron monument and updated ties.

May 12, 1997– Found Washington County Cast Iron monument and updated ties.

February 25, 1998– Found Washington County Cast Iron monument and established NAD 1983 (1996 Adjustment) Anoka County Project Coordinates by Static GPS methods. Updated ties.

July 21, 2010 – Found Washington County Cast Iron monument near east edge of road down 1.0'± and updated ties.

September 23, 2016 – Found Washington County Cast Iron monument leaning easterly on east side of road down 1.5'±. Verified location of corner by VRS GPS methods. Updated ties.

April 20, 2021 – Found Washington County Cast Iron monument leaning easterly on east side of road down 1.5'±. Verified location of corner by VRS GPS methods. Updated ties.

May 26, 2023 – Removed leaning Cast Iron Monument and replaced with new CIM using ACS RTK GPS method. Updated and verified historical ties after replacement.