

CERTIFICATE OF LOCATION OF GOVERNMENT CORNER

County of Anoka

State of Minnesota

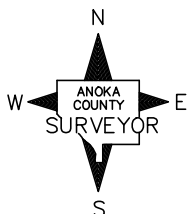
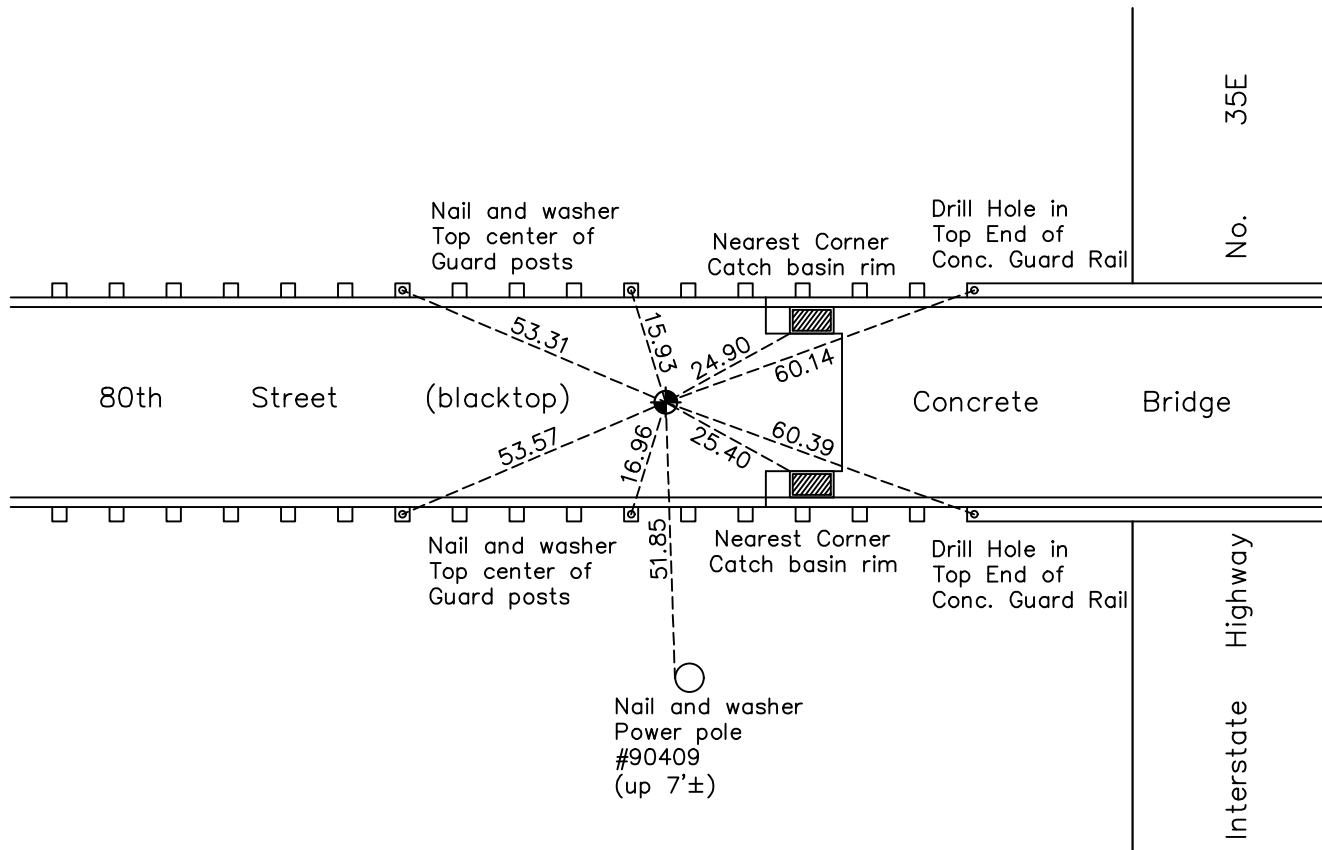
South 1/4 Corner of Sec. 1 Township 31 Range 22

On the 18th day of October, 1973, the described corner was evidenced by area resurvey

and to perpetuate the location of said corner, at the exact location thereof, a permanent marker was placed consisting of a cast iron monument

AND on the 10th day of May, 2021, said permanent marker was found flush and on centerline. The ties were updated

Updated reference ties are as shown below.



Revision Date

6/14/19

N.A.D. 1983 Coordinates
(1996 Adjustment)

County Project Coordinates	
Northing	<u>158860.8346</u>
Easting	<u>560900.5089</u>
Date	<u>2/03/98</u>

I hereby certify that this United States public land survey monument record is correct and complete to the best of my knowledge and belief.

David M Zieglmeier Date 8/27/21

David M. Zieglmeier, Anoka County Surveyor
Minnesota License Number 46179

HISTORY OF GOVERNMENT CORNER

Page No. 23

County of Anoka

State of Minnesota

South 1/4 Corner of Sec. 1 Township 31 Range 22

CORNER HISTORY:

May 11, 1961- Corner could not be located based on Hoium ties.

August 7, 1964 - Corner could not be located based on Hoium ties.

October 18, 1973 - Set cast iron monument flush using area resurvey. Established ties to monument.

August 18, 1976 - Found cast iron monument and updated ties.

July 25, 1980 - Found cast iron monument and updated ties.

July 7, 1986 - Found cast iron monument and updated ties.

April 11, 1989 - Set construction ties and removed cast iron monument prior to road construction.

July 31, 1989 - Found cast iron monument (date set is unknown) and updated ties.

August 30, 1991 - Found cast iron monument and updated ties.

June 20, 1996 - Found cast iron monument and updated ties.

February 3, 1998 - Found cast iron monument, established NAD 1983 (1996 adj.) Anoka County project coordinates by static GPS methods and updated ties.

July 2010 - Found cast iron monument flush and updated ties.

September 23, 2016 - Found cast iron monument flush and on center line, verified position by VRS GPS methods and updated ties.

June 25, 2018 - Found cast iron monument flush and on center line and updated ties. Removed for road construction.

October 31, 2018 - Set cast iron monument flush after road construction. Verified position by VRS and static GPS methods. Updated ties.

May 10, 2021 - Found cast iron monument flush. Verified position by VRS GPS methods. Updated ties.