

# CERTIFICATE OF LOCATION OF GOVERNMENT CORNER

County of Anoka

State of Minnesota

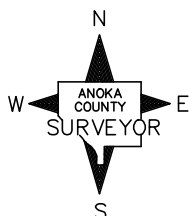
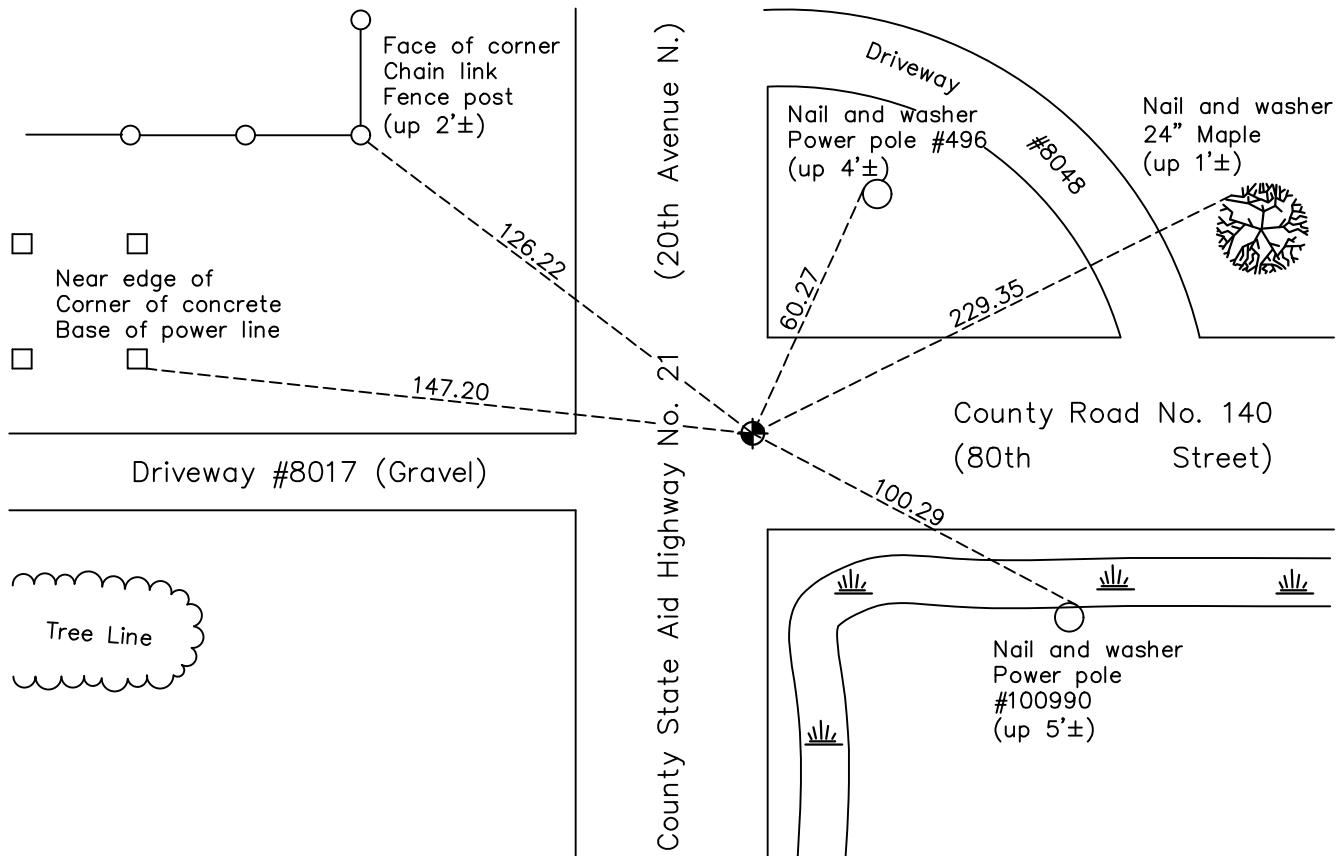
## Southwest Corner of Sec. 1 Township 31 Range 22

On the 17th day of October, 1973, the described corner was evidenced by area resurvey

and to perpetuate the location of said corner, at the exact location thereof, a permanent marker was placed consisting of a cast iron monument

AND on the 10th day of May, 2021, said permanent marker was found flush with the surface and the ties were updated. Monument is 3'± west of northbound white line.

Updated reference ties are as shown below.



Revision Date  
7/23/21

N.A.D. 1983 Coordinates  
 (1996 Adjustment)

County Project Coordinates	
Northing	<u>158868.5699</u>
Easting	<u>558266.7203</u>
Date	<u>2/03/98</u>

I hereby certify that this United States public land survey monument record is correct and complete to the best of my knowledge and belief.

*David M Zieglsmeier* Date 8/27/21

David M. Zieglsmeier, Anoka County Surveyor  
 Minnesota License Number 46179

# HISTORY OF GOVERNMENT CORNER

Page No. 24

County of Anoka

State of Minnesota

## Southwest Corner of Sec. 1 Township 31 Range 22

### **CORNER HISTORY:**

September 7, 1948 – Cartwright found Concrete monument. Established ties to monument.

August 25, 1962 – F. R. Kvidera found R. R. Spike in bent 1” pipe. Set 1/2” pinched iron pipe and updated ties.

November 12, 1962 – Found 1/2” iron pipe set by F.R. Kvidera, over RR spike in 1” pipe and updated ties.

June 22, 1965– Found 1/2” iron pipe and updated ties.

August 1, 1969 – Replaced 1/2” iron pipe with Cast Iron monument flush with the surface and updated ties. Set P.K. nails 2.00’ north and east of monument.

July 9, 1970 – Removed cast iron monument prior to road construction.

September 13, 1972 – Found all ties missing.

October 17, 1973 – Set Cast Iron Monument flush with the surface using area resurvey and updated ties.

August 18, 1976 – Found Cast Iron Monument and updated ties.

July 25, 1980 – Found Cast Iron Monument and updated ties.

June 18, 1996 – Found Cast Iron Monument and updated ties.

February 3, 1998 – Found Cast Iron Monument and established NAD 1983 (1996 Adjustment Anoka County Project Coordinates by Static GPS methods. Updated ties.

July 20, 1998 – Replaced Cast Iron Monument and updated ties.

July 2010 – Found Cast Iron Monument flush with the surface and updated ties.

September 23, 2016 – Found Cast Iron Monument flush with the surface. Verified location of corner by VRS GPS methods and updated ties.

May 10, 2021 – Found Cast Iron Monument flush with the surface. Verified location of corner by VRS GPS methods and updated ties.