

CERTIFICATE OF LOCATION OF GOVERNMENT CORNER

County of Anoka

State of Minnesota

Witness Corner of Sec. 11 Township 31 Range 22

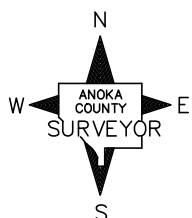
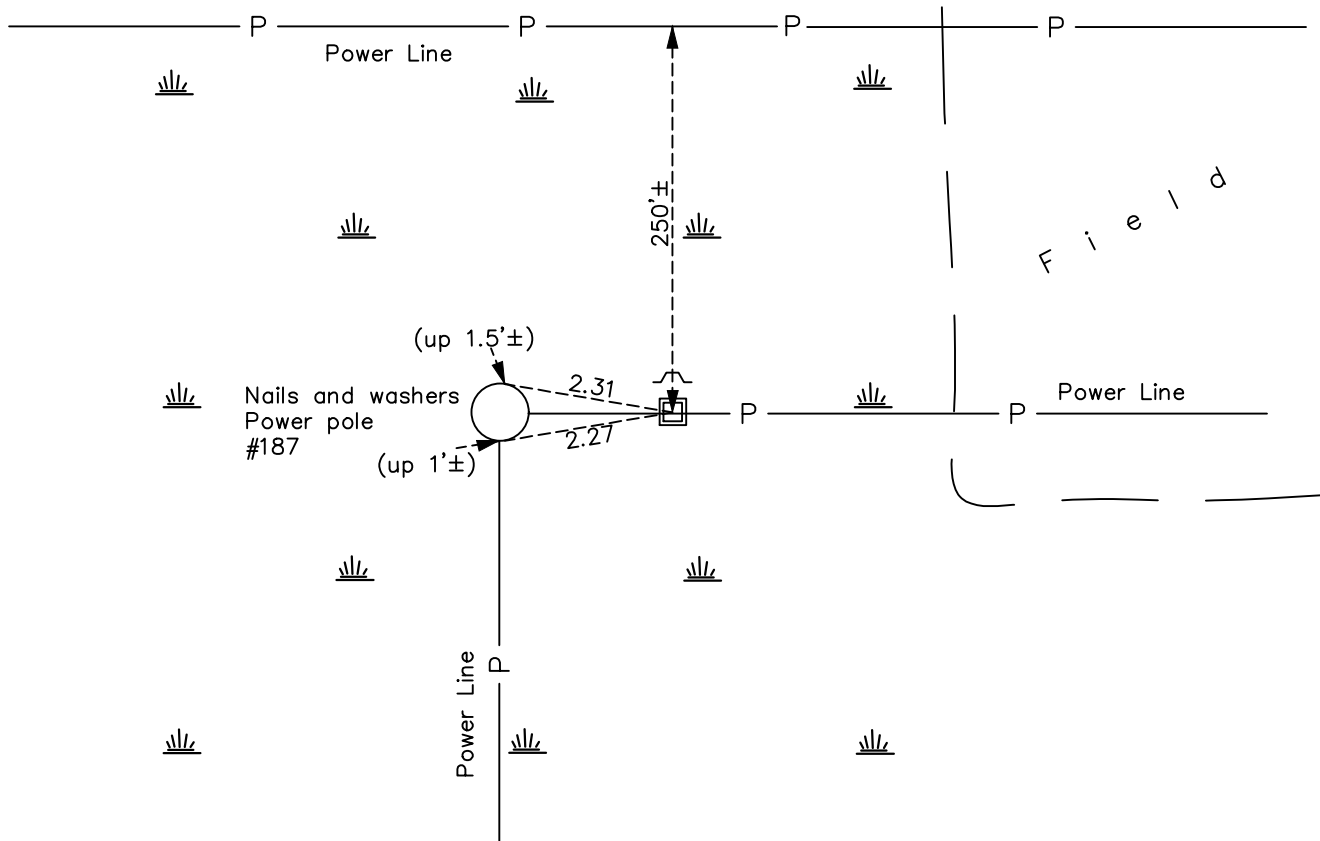
(On the north line of the NE 1/4)

On the 20th day of October, 1975, the described corner was evidenced by area resurvey

and to perpetuate the location of said corner, at the exact location thereof, a permanent marker was placed consisting of 2" square steel Telespar monument with 'County Surveyor' cap with a sign and post on the north side

AND on the 26th day of January, 2023, said permanent marker was found up 1'± and the Coordinates were verified using County RTK GPS method

Updated reference ties are as shown below.



Revision Date
1/30/2023

N.A.D. 1983 Coordinates
 (1996 Adjustment)

County Project Coordinates	
Northing	<u>158878.7446</u>
Easting	<u>557005.4297</u>
Date	<u>4/10/98</u>

I hereby certify that this United States public land survey monument record is correct and complete to the best of my knowledge and belief.

David Zieglmeier Date 2/28/23

David M. Zieglmeier, Anoka County Surveyor
 Minnesota License Number 46179

HISTORY OF GOVERNMENT CORNER

Page No. 24A

County of Anoka

State of Minnesota

Witness Corner of Sec. 11 Township 31 Range 22
(On the north line of the NE 1/4)

CORNER HISTORY:

October 20, 1975– Set Cast Iron Monument with a sign and post on the north side using area resurvey and established ties to monument.

June 9, 1977 – Found Cast Iron Monument and updated ties.

August 6, 1980 – Found Cast Iron Monument and updated ties.

February 28, 1991 – Found Cast Iron Monument and updated ties.

October 30, 1991 – Found Cast Iron Monument and updated ties.

July 24, 1996 – Found Cast Iron Monument and updated ties.

April 10, 1998 – Found Cast Iron Monument with sign and post on the north side and established NAD 1983 (1996 Adjustment) Anoka County Project Coordinates by Static GPS methods. Updated ties.

September 1, 2010 – Found Cast Iron Monument up 0.4'± leaning west and updated ties.

April 19, 2011 – Reset Cast Iron Monument and updated ties. Verified location of corner by Static GPS methods.

May 24, 2011 – Replaced Cast Iron Monument with a 2" square steel Telespar monument with 'County Surveyor' cap and updated ties.

February 1, 2017 – Found 2" square steel Telespar monument with 'County Surveyor' cap up 1'± and a sign and post on the north side. Updated ties.

June 3, 2021 – Found 2" square steel Telespar monument with 'County Surveyor' cap up 1'± and a sign and post on the north side. Updated ties.

January 26, 2023 – Found 2" square steel Telspar monument with Cap, up 1'±, verified position by County RTK GPS method and the ties were reviewed.