

CERTIFICATE OF LOCATION OF GOVERNMENT CORNER

County of Anoka

State of Minnesota

Witness Corner of Sec. 11 Township 31 Range 22

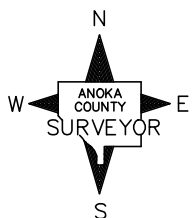
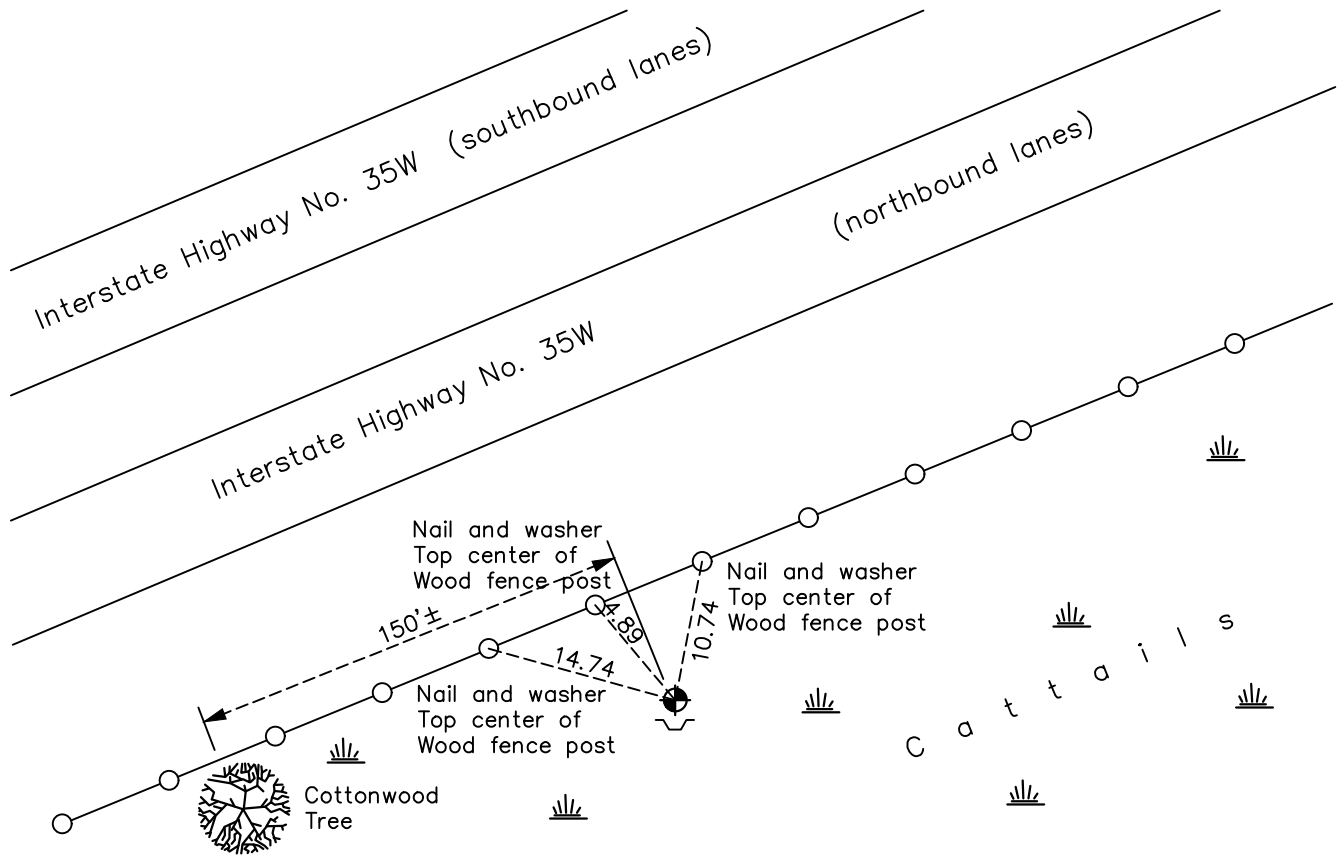
(On the north line of the NW 1/4)

On the 21st day of October, 1975, the described corner was evidenced by area resurvey

and to perpetuate the location of said corner, at the exact location thereof, a permanent marker was placed consisting of a cast iron monument located 756.97' east of the Northwest corner of Section 11, with a sign and post on the south side

AND on the 1st day of June, 2021, said permanent marker was found up 0.1'± and the ties were updated

Updated reference ties are as shown below.



Revision Date
7/23/21

N.A.D. 1983 Coordinates
 (1996 Adjustment)

County Project Coordinates	
Northing	158905.2524
Easting	553767.0704
Date	2/18/98

I hereby certify that this United States public land survey monument record is correct and complete to the best of my knowledge and belief.

David M Zieglermeier Date 8/30/21

David M. Zieglermeier, Anoka County Surveyor
 Minnesota License Number 46179

HISTORY OF GOVERNMENT CORNER

County of Anoka

State of Minnesota

Witness Corner of Sec. 11 Township 31 Range 22
(On the north line of the NW 1/4)

CORNER HISTORY:

October 21, 1975 – Set Cast Iron Monument using area resurvey with sign and post on the south side. Established ties to monument. Monument is located 756.97' east of Northwest corner of Section 11.

May 16, 1977 – Found Cast Iron Monument and updated ties.

August 5, 1980 – Found Cast Iron Monument and updated ties.

December 24, 1990 – Found Cast Iron Monument and updated ties.

October 21, 1991 – Found Cast Iron Monument and updated ties.

July 11, 1996 – Found Cast Iron Monument and updated ties.

February 18, 1998 – Found Cast Iron Monument and established NAD 1983 (1996 Adjustment) Anoka County Project Coordinates by Static GPS methods. Updated ties.

August 31, 2010 – Found Cast Iron Monument up 0.1'± and updated ties.

January 27, 2017 – Found Cast Iron Monument up 0.1'± and updated ties.

June 1, 2021 – Found Cast Iron Monument up 0.1'± and updated ties. Verified position by VRS GPS methods.