

# CERTIFICATE OF LOCATION OF GOVERNMENT CORNER

County of Anoka

State of Minnesota

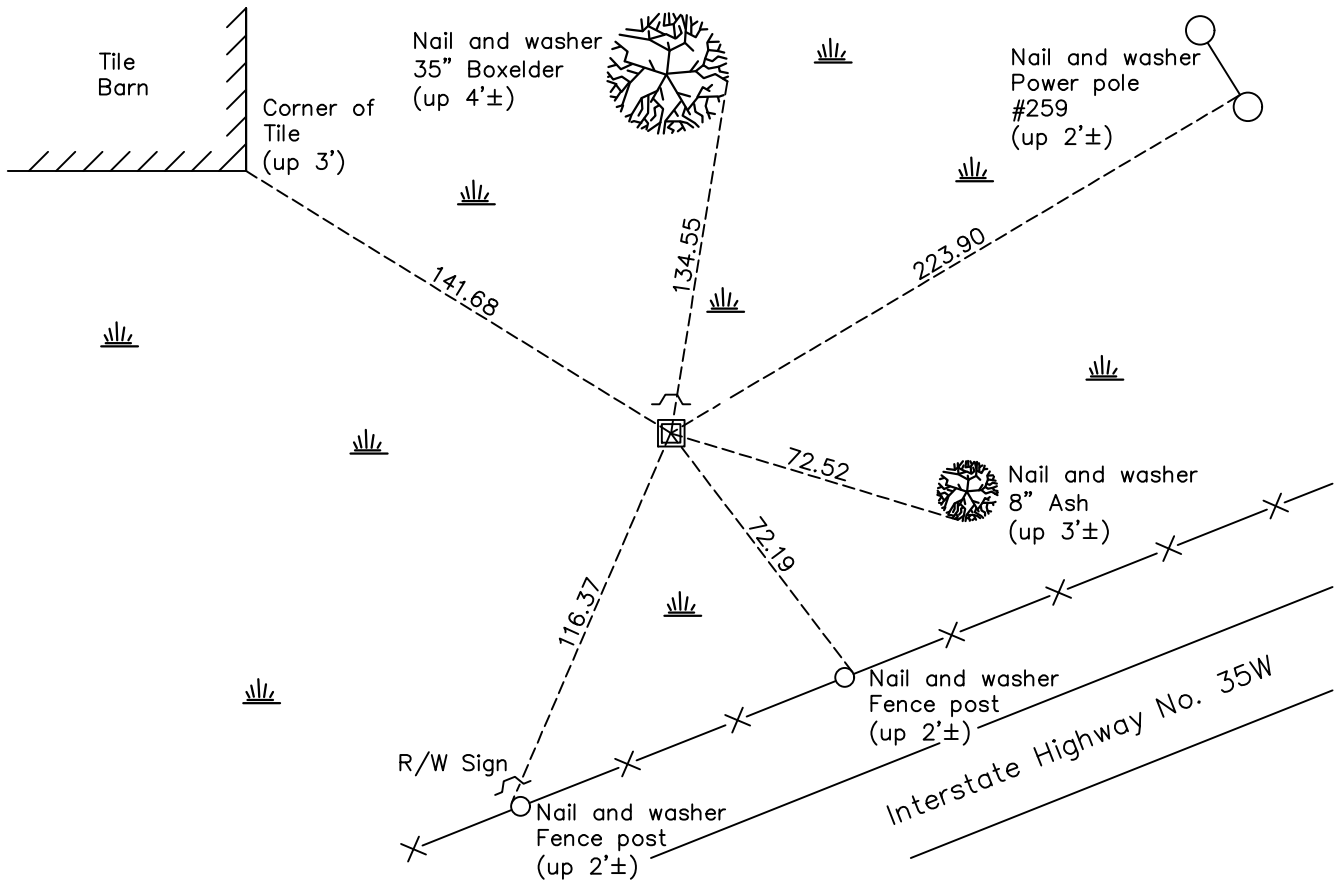
## Southwest Corner of Sec. 2 Township 31 Range 22

On the 7th day of August, 1969, the described corner was evidenced by a 6" X 4" oval stone

and to perpetuate the location of said corner, at the exact location thereof, a permanent marker was placed consisting of a red and white 2" square steel Telespar monument up 2'± with a 'County Surveyor' cap and punch mark

AND on the 2nd day of December, 2022, said permanent marker was found up 2'± and the ties were updated

Updated reference ties are as shown below.



Revision Date

01/03/2023

N.A.D. 1983 Coordinates  
(1996 Adjustment)

County Project Coordinates	
Northing	<u>158911.1346</u>
Easting	<u>553010.1196</u>
Date	<u>3/29/06</u>

I hereby certify that this United States public land survey monument record is correct and complete to the best of my knowledge and belief.

*David Zieglermeier* Date 6/28/23

David M. Zieglermeier, Anoka County Surveyor  
Minnesota License Number 46179

# HISTORY OF GOVERNMENT CORNER

Page No. 26

County of Anoka

State of Minnesota

## Southwest Corner of Sec. 2 Township 31 Range 22

### **CORNER HISTORY:**

August 25, 1948 – Cartwright found Granite Monument. Established ties to monument.

January 5, 1962 – Found Iron Pipe up 1.0'±, Granite Monument was not located due to frozen ground. Updated ties.

March 16, 1966 – Found Iron Pipe and set sign an post on the southeast side. Updated ties.

August 7, 1969 – Found 6"X4" Oval Stone south of Iron Pipe with "X" on the top. Sign and post on the north side of iron pipe up 6'±. Updated ties.

August 5, 1980 – Found Oval Stone and updated ties.

July 30, 1986 – Found Oval Stone and updated ties.

July 11, 1996 – Found Oval Stone and updated ties.

October 9, 1998 – Found Oval Stone and updated ties.

March 29, 2006 – Found Oval Stone and established NAD 1983 (1996 Adjustment) Anoka County Project Coordinates by Static GPS methods.

January 10, 2011 – Found Oval Stone and updated ties.

March 15, 2011 – Replaced Oval Stone with a red and white 2" square steel Telespar Monument up 1'± with a 'County Surveyor' cap and punch mark. Verified location of corner by VRS GPS methods. Updated ties.

January 31, 2017 – Found a red and white 2" square steel Telespar Monument up 1'± with a 'County Surveyor' cap and punch mark. Verified location of corner by VRS GPS methods. Updated ties.

December 2, 2022 – Found red and white 2" sq steel Telspar Monument up 2'± with a "County Surveyor' cap and punch mark. Verified location of corner by VRS GPS method and updated the ties.