

CERTIFICATE OF LOCATION OF GOVERNMENT CORNER

County of Anoka

State of Minnesota

Witness Corner of Sec. 10 Township 31 Range 22

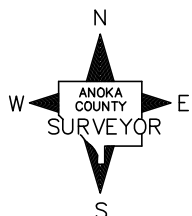
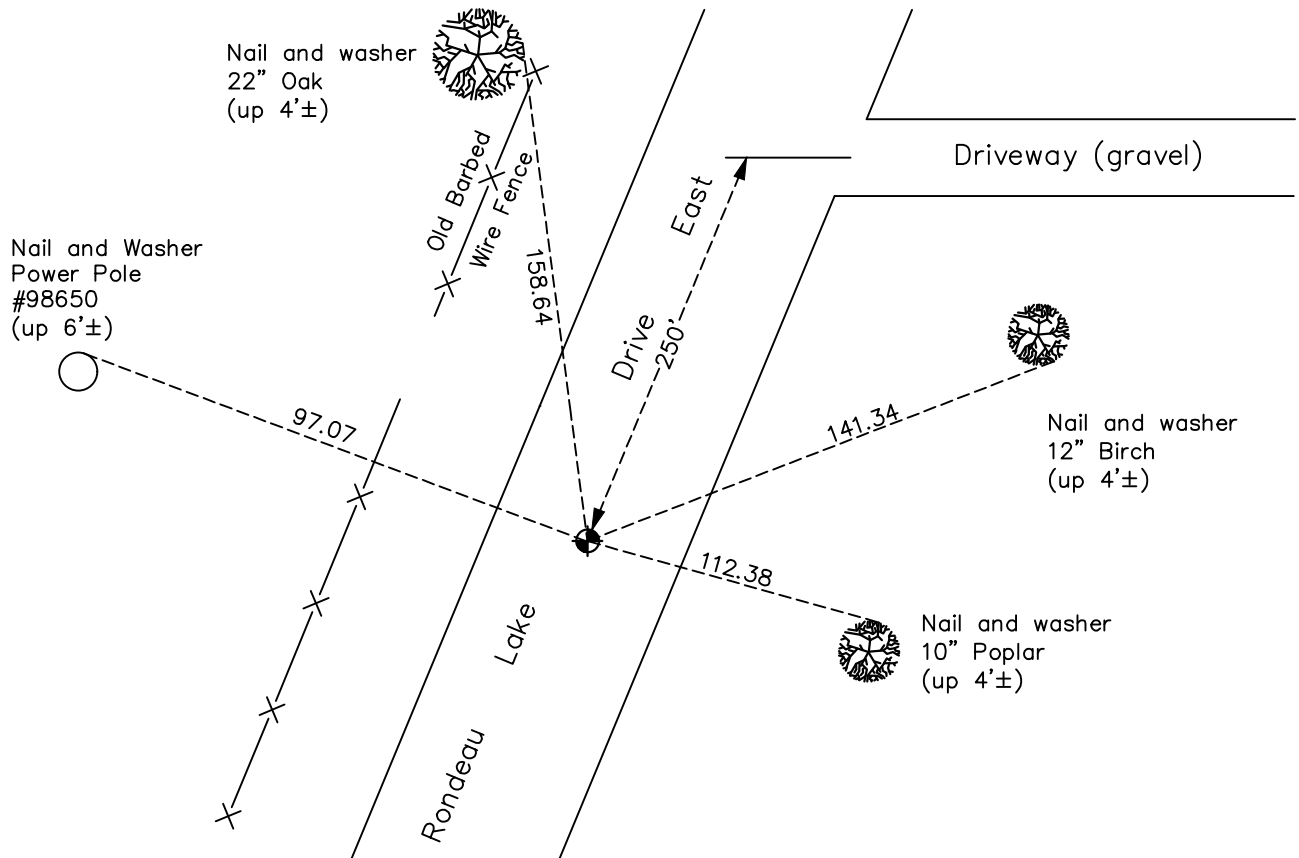
(on north line of NE 1/4)

On the 28th day of June, 1979, the described corner was evidenced by area resurvey

and to perpetuate the location of said corner, at the exact location thereof, a permanent marker was placed consisting of a cast iron monument

AND on the 13th day of October, 2022, said permanent marker was Raised CIM top to the surface after road overlay. Verified position by RTK GPS method.

Updated reference ties are as shown below.



Revision Date
3/9/2023

N.A.D. 1983 Coordinates
(1996 Adjustment)

County Project Coordinates	
Northing	<u>158900.3474</u>
Easting	<u>552351.0845</u>
Date	<u>2/06/98</u>

I hereby certify that this United States public land survey monument record is correct and complete to the best of my knowledge and belief.

David Zieglermeier Date 12/11/23

David M. Zieglermeier, Anoka County Surveyor
Minnesota License Number 46179

HISTORY OF GOVERNMENT CORNER

Page No. 27A

County of Anoka

State of Minnesota

Witness Corner of Sec. 10 Township 31 Range 22
(on north line of NE 1/4)

CORNER HISTORY:

June 28, 1979 - Set Cast Iron Monument flush using area resurvey with PK nails north and east. Established ties to monument.

August 1, 1980 - Found Cast Iron Monument and updated ties.

October 23, 1991 - Raised Cast Iron Monument to flush with the surface and updated ties.

June 12, 1996 - Found Cast Iron Monument and updated ties.

February 6, 1998 - Found Cast Iron Monument and established NAD 1983 (1996 Adjustment) Anoka County Project Coordinates by Static GPS methods. Updated ties.

June 16, 2010 - Found Cast Iron Monument flush with the surface and updated ties.

September 22, 2016 - Found Cast Iron Monument flush with the surface and updated ties. Verified location of corner by VRS GPS methods.

April 20, 2021 - Found Cast Iron Monument flush with the surface and updated ties. Verified location of corner by VRS GPS methods.

May 20, 2022 - Found cast iron monument. Verified position by VRS GPS method. Removed top for construction overlay.

October 13, 2022 - Raised cast iron monument to surface after overlay. Verified position by VRS GPS method.