

# CERTIFICATE OF LOCATION OF GOVERNMENT CORNER

County of Anoka

State of Minnesota

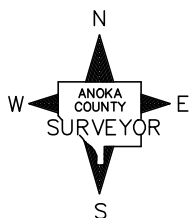
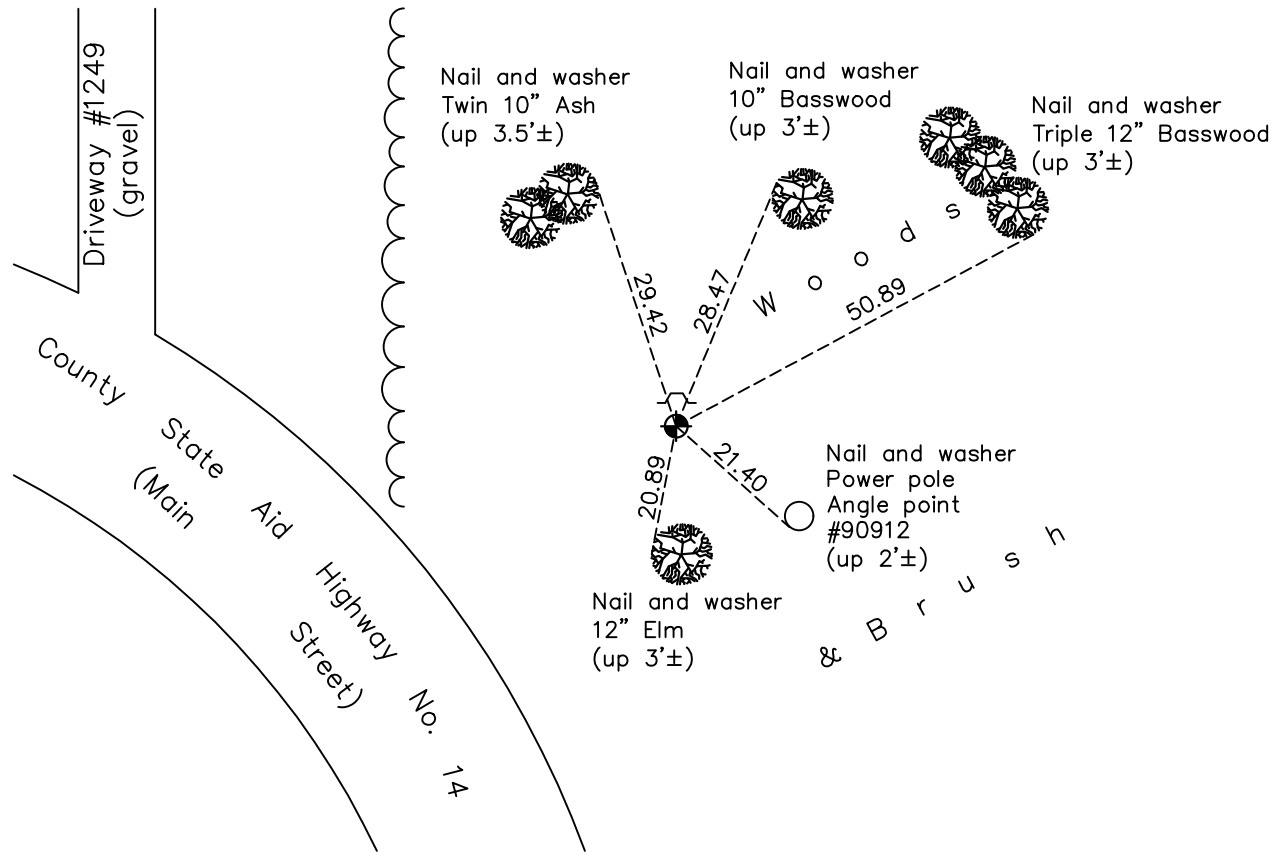
Witness Corner of Sec. 10 Township 31 Range 22  
(on north line of NW 1/4)

On the 28th day of January, 1979, the described corner was evidenced by area resurvey

and to perpetuate the location of said corner, at the exact location thereof, a permanent marker was placed consisting of a cast iron monument with a sign and post on north side

AND on the 20th day of April, 2021, said permanent marker was found down 0.1'± and the ties were updated.

Updated reference ties are as shown below.



Revision Date  
7/23/21

N.A.D. 1983 Coordinates  
 (1996 Adjustment)

County Project Coordinates	
Northing	<u>158840.2006</u>
Easting	<u>548682.6334</u>
Date	<u>6/24/96</u>

I hereby certify that this United States public land survey monument record is correct and complete to the best of my knowledge and belief.

\_\_\_\_\_ Date \_\_\_\_\_

David M. Zieglmeier, Anoka County Surveyor  
 Minnesota License Number 46179

# HISTORY OF GOVERNMENT CORNER

Page No. 27B

County of Anoka

State of Minnesota

Witness Corner of Sec. 10 Township 31 Range 22  
(on north line of NW 1/4)

## **CORNER HISTORY:**

June 28, 1979 – Set Cast Iron Monument flush with the surface using area resurvey. Set sign and post on the north side. Established ties to monument.

December 24, 1990 – Found Cast Iron Monument and updated ties.

October 23, 1991 – Found Cast Iron Monument with sign and post on the north side. Updated ties.

June 24, 1996 – Found Cast Iron Monument and established NAD 1983 (1996 Adjustment) Anoka County Project Coordinates by Static GPS methods. Updated ties.

June, 2010 – Found Cast Iron Monument with sign and post on the north side of monument. Updated ties.

October 10, 2016 – Found Cast Iron Monument with sign and post on the north side. Updated ties.

April 20, 2021 – Found Cast Iron Monument down 0.1'± with sign and post on the north side. Updated ties. Verified location of corner by VRS GPS methods.