

CERTIFICATE OF LOCATION OF GOVERNMENT CORNER

County of Anoka

State of Minnesota

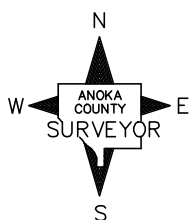
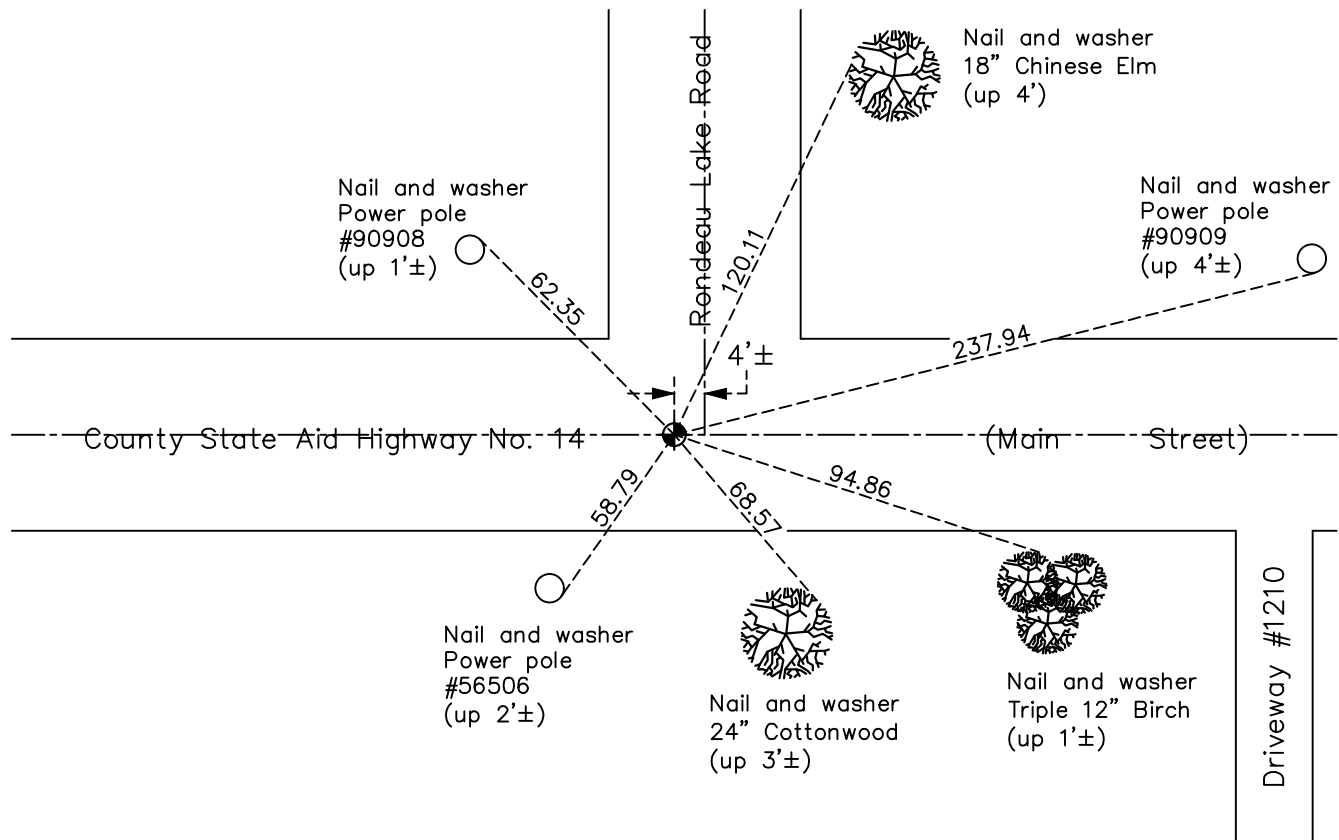
Southeast Corner of Sec. 4 Township 31 Range 22

On the 11th day of August, 1969, the described corner was evidenced by a concrete monument

and to perpetuate the location of said corner, at the exact location thereof, a permanent marker was placed consisting of a cast iron monument with P.K. nails 2.00' North and East

AND on the 25th day of May, 2021, said permanent marker was found flush and the ties were updated

Updated reference ties are as shown below.



Revision Date
7/26/21

N.A.D. 1983 Coordinates
(1996 Adjustment)

County Project Coordinates	
Northing	<u>158825.0922</u>
Easting	<u>547738.4513</u>
Date	<u>1/21/98</u>

I hereby certify that this United States public land survey monument record is correct and complete to the best of my knowledge and belief.

David M. Zieglermeier Date 8/30/21

David M. Zieglermeier, Anoka County Surveyor
Minnesota License Number 46179

HISTORY OF GOVERNMENT CORNER

Page No. 28

County of Anoka

State of Minnesota

Southeast Corner of Sec. 4 Township 31 Range 22

CORNER HISTORY:

September 6, 1943 – Cartwright found Concrete Monument. Established ties to monument.

February 4, 1953 – Found Concrete Monument and updated ties.

May 11, 1961 – Found Concrete Monument and updated ties. Set Iron Pipe on north side of monument.

August 11, 1969 – Set Cast Iron Monument on top of broken Concrete Monument flush with the surface. P.K. nails 2.00' north and east of monument. Monument is 1'± south of center line and 4.5'± west of the center line. Updated ties.

June 14, 1973 – Found Cast Iron Monument and updated ties.

October 15, 1975 – Raised Cast Iron Monument and updated ties.

August 18, 1976 – Found Cast Iron Monument and updated ties.

August 1, 1980 – Found Cast Iron Monument and updated ties.

September 15, 1987 – Set Cast Iron Monument flush with the surface after road construction and updated ties. P.K. nails 2.00' north and east of monument.

June 27, 1991 – Found Cast Iron Monument and updated ties.

June 17, 1996 – Found Cast Iron Monument and updated ties.

January 21, 1998 – Found Cast Iron Monument and established NAD 1983 (1996 Adjustment) Anoka County Project Coordinates by Static GPS methods. Updated ties.

June 15, 2010 – Found Cast Iron Monument flush with the surface and updated ties.

July 9, 2015 – Found Cast Iron Monument and verified location of corner by VRS GPS methods. Unable to update or set construction ties due to road construction.

August 28, 2015 – Reset Cast Iron Monument after road construction and updated ties.

January 9, 2017 – Found Cast Iron Monument with P.K. nails 2.00' north and east. Verified location of corner by VRS GPS methods. Updated ties.

May 25, 2021 – Found Cast Iron Monument flush with P.K. nails 2.00' north and east. Verified location of corner by VRS GPS methods. Updated ties.