

CERTIFICATE OF LOCATION OF GOVERNMENT CORNER

County of Anoka

State of Minnesota

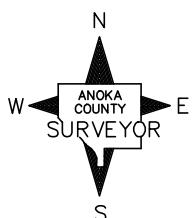
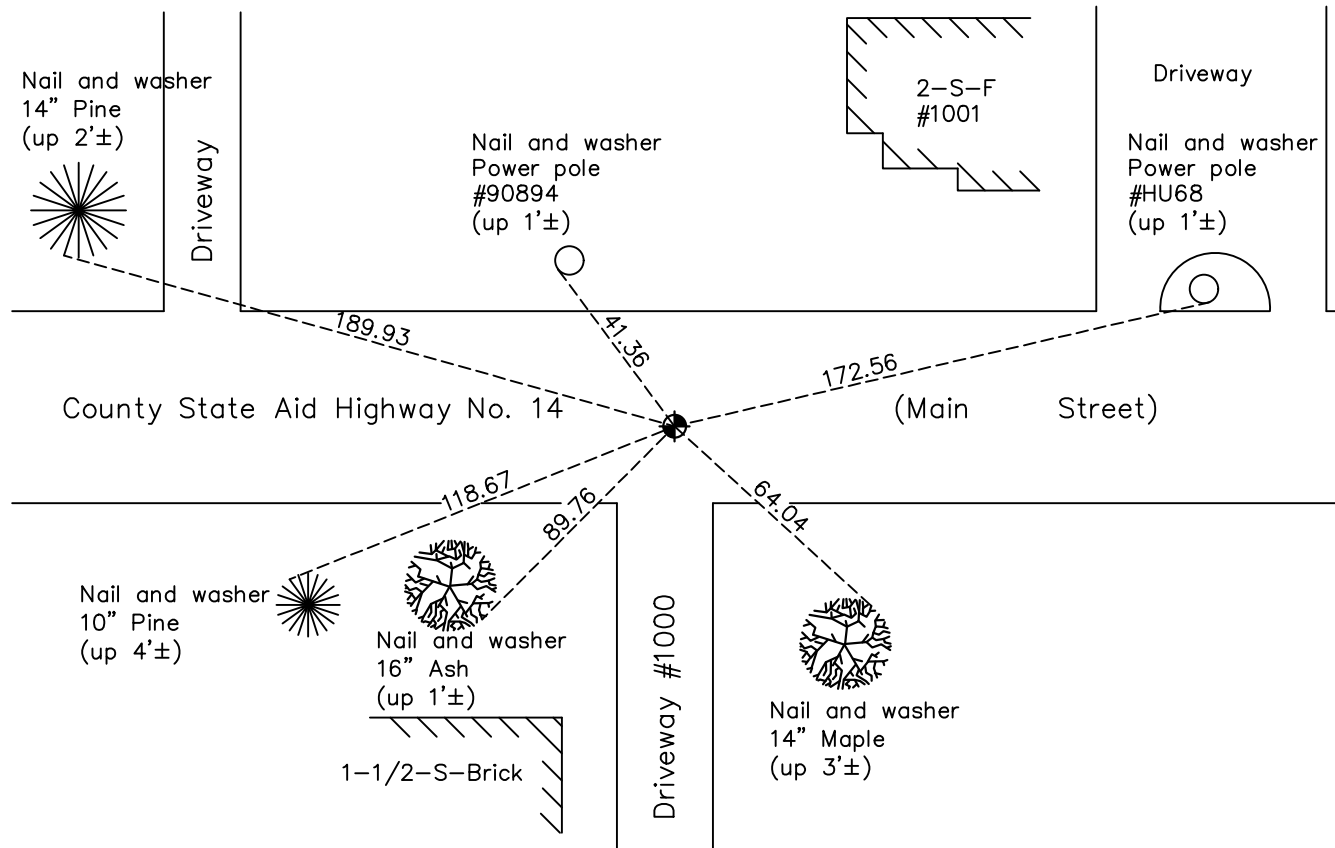
South 1/4 Corner of Sec. 4 Township 31 Range 22

On the 5th day of February, 1964, the described corner was evidenced by area resurvey

and to perpetuate the location of said corner, at the exact location thereof, a permanent marker was placed consisting of a cast iron monument

AND on the 25th day of May, 2021, said permanent marker was found flush with the surface and the ties were updated

Updated reference ties are as shown below.



Revision Date
7/26/21

N.A.D. 1983 Coordinates
(1996 Adjustment)

County Project Coordinates	
Northing	<u>158848.9753</u>
Easting	<u>545106.5359</u>
Date	<u>1/21/98</u>

I hereby certify that this United States public land survey monument record is correct and complete to the best of my knowledge and belief.

David M. Zieglmeier Date 8/30/21

David M. Zieglmeier, Anoka County Surveyor
Minnesota License Number 46179

HISTORY OF GOVERNMENT CORNER

Page No. 29

County of Anoka

State of Minnesota

South 1/4 Corner of Sec. 4 Township 31 Range 22

CORNER HISTORY:

February 5, 1964 – Set P.K. nail half way and on line between section corners using area resurvey. Established ties to monument.

July 31, 1964 – Set Cast Iron Monument flush with the surface and P.K. nails 2.00' north and east of monument. Updated ties.

June 16, 1965 – Found Cast Iron Monument and updated ties.

August 11, 1969 – Found Cast Iron Monument and updated ties.

June 19, 1973 – Found Cast Iron Monument and updated ties.

August 18, 1976 – Found Cast Iron Monument and updated ties.

August 6, 1980 – Found Cast Iron Monument and updated ties.

September 1, 1987– Replaced Cast Iron Monument after road construction and updated ties. Set P.K. nails 2.00' north and east of monument.

June 28, 1991 – Found Cast Iron Monument and updated ties.

June 17, 1996 – Found Cast Iron Monument and updated ties.

January 21, 1998 – Found Cast Iron Monument and established NAD 1983 (1996 Adjustment) Anoka County Project Coordinates by Static GPS methods. Updated ties.

July 9, 2015 – Updated ties and removed Cast Iron Monument prior to road construction. Verified location of corner by VRS GPS methods.

August 28, 2015 – Replaced Cast Iron Monument after road construction and updated ties. Verified location of corner by VRS GPS methods.

January 10, 2017– Found Cast Iron Monument flush with the surface. Verified location of corner by VRS GPS methods. Updated ties.

May 25, 2021– Found Cast Iron Monument flush with the surface. Verified location of corner by VRS GPS methods. Updated ties.