

# CERTIFICATE OF LOCATION OF GOVERNMENT CORNER

County of Anoka

State of Minnesota

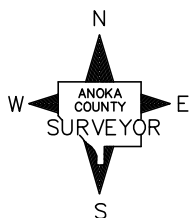
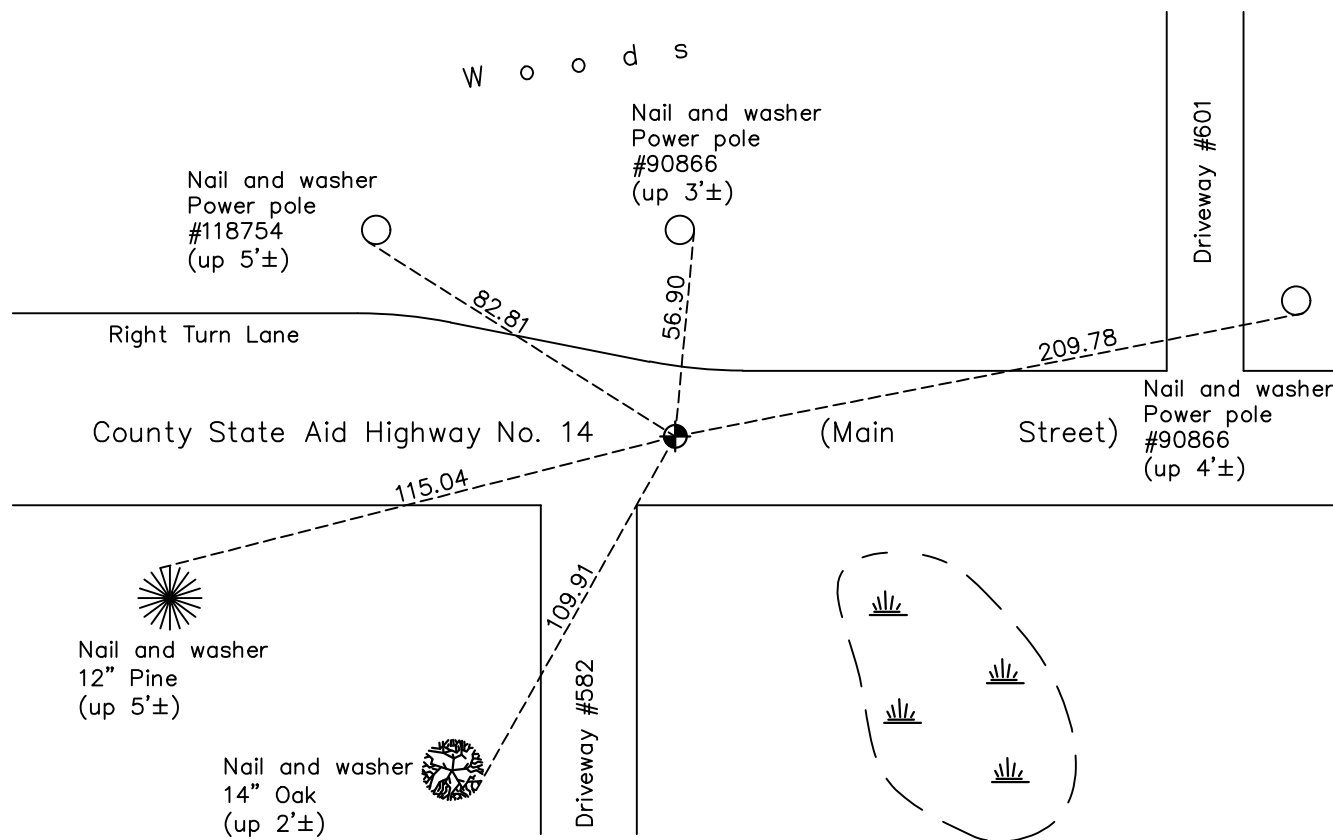
## South 1/4 Corner of Sec. 5 Township 31 Range 22

On the 15th day of March, 1962, the described corner was evidenced by a 1" iron pipe

and to perpetuate the location of said corner, at the exact location thereof, a permanent marker was placed consisting of a cast iron monument

AND on the 28th day of May, 2021, said permanent marker was found flush with the surface and the ties were updated

Updated reference ties are as shown below.



N.A.D. 1983 Coordinates  
(1996 Adjustment)

County Project Coordinates	
Northing	158892.8490
Easting	539854.5036
Date	1/21/98

Revision Date  
7/26/21

I hereby certify that this United States public land survey monument record is correct and complete to the best of my knowledge and belief.  
*David M Zieglermeier* Date 8/30/21  
 David M. Zieglermeier, Anoka County Surveyor  
 Minnesota License Number 46179

# HISTORY OF GOVERNMENT CORNER

Page No. 31

County of Anoka

State of Minnesota

## South 1/4 Corner of Sec. 5 Township 31 Range 22

### **CORNER HISTORY:**

June 9, 1949 – Jackson found corner (type of monument unknown). Established ties to monument.

March 15, 1962– Found 2' X 1" Iron Pipe down 0.5'±. Updated ties and then removed iron pipe to dig down another 2'± but found nothing. Replaced iron pipe with a Cast Iron Monument.

June 16, 1965 – Found Cast Iron Monument and updated ties. Set P.K. nails 2.00' north and east of monument.

August 11, 1969 – Found Cast Iron Monument and updated ties.

June 15, 1973 – Found Cast Iron Monument and updated ties.

August 18, 1976 – Found Cast Iron Monument and updated ties.

August 6, 1980 – Found Cast Iron Monument and updated ties.

August 27, 1984 – Raised Cast Iron Monument and updated ties.

September 1, 1987 – Reset Cast Iron Monument flush with the surface after road construction with P.K. nails north and east. Updated ties.

June 1, 1989 – Found Cast Iron Monument and updated ties.

June 28, 1991 – Found Cast Iron Monument and updated ties.

June 17, 1996 – Found Cast Iron Monument and updated ties.

January 21, 1998 – Found Cast Iron Monument and established NAD 1983 (1996 Adjustment) Anoka County Project Coordinates by Static GPS methods. Updated ties.

May 7, 2001 – Set construction ties and removed Cast Iron Monument prior to road construction. Date reset is unknown.

June 28, 2012 – Set construction ties and removed Cast Iron Monument prior to road construction. Updated ties and verified location of corner by VRS GPS methods.

August 29, 2012 – Reset Cast Iron Monument after road construction and updated ties.

January 10, 2017 – Found Cast Iron Monument flush with the surface and updated ties. Verified location of corner by VRS GPS methods.

May 28, 2021 – Found Cast Iron Monument flush with the surface and updated ties. Verified location of corner by VRS GPS methods.