

CERTIFICATE OF LOCATION OF GOVERNMENT CORNER

County of Anoka

State of Minnesota

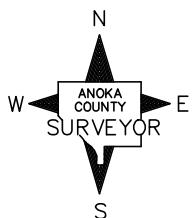
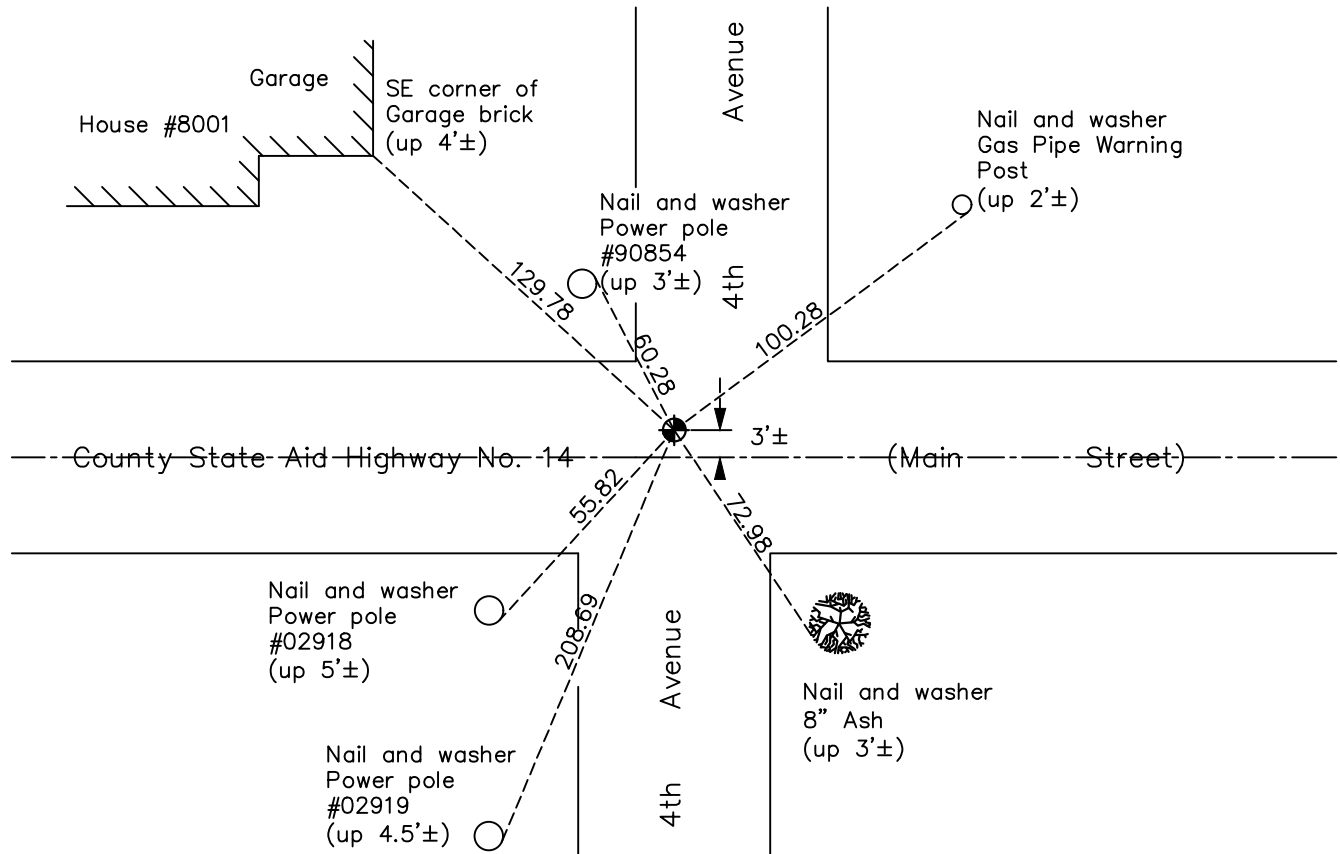
Southwest Corner of Sec. 5 Township 31 Range 22

On the 20th day of May, 1963, the described corner was evidenced by area resurvey

and to perpetuate the location of said corner, at the exact location thereof, a permanent marker was placed consisting of a cast iron monument

AND on the 28th day of May, 2021, said permanent marker was found flush with the surface and the ties were updated

Updated reference ties are as shown below.



Revision Date
7/26/21

N.A.D. 1983 Coordinates
 (1996 Adjustment)

County Project Coordinates	
Northing	158917.0585
Easting	537208.3552
Date	1/21/98

I hereby certify that this United States public land survey monument record is correct and complete to the best of my knowledge and belief.

David M Zieglmeier Date 8/30/21

David M. Zieglmeier, Anoka County Surveyor
 Minnesota License Number 46179

HISTORY OF GOVERNMENT CORNER

County of Anoka

State of Minnesota

Southwest Corner of Sec. 5 Township 31 Range 22

CORNER HISTORY:

May 20, 1963 – Set Cast Iron Monument using area resurvey. Set P.K. nails 2.00' north and east of monument. Established ties to monument.

June 16, 1965 – Found Cast Iron Monument and updated ties.

August 12, 1969 – Found Cast Iron Monument broken. Replaced with new Cast Iron Monument set flush with the surface using ties and P.K. nails 2.00' north and east. Updated ties.

June 15, 1973 – Found Cast Iron Monument and updated ties.

August 17, 1976 – Found Cast Iron Monument and updated tie

August 5, 1980– Found Cast Iron Monument and updated ties.

September 2, 1987 – Set Cast Iron Monument flush with the surface after road construction and updated ties. Set P.K. nails 2.00' north and east of monument.

June 28, 1991 – Found Cast Iron Monument and updated ties.

June 17, 1996 – Found Cast Iron Monument and updated ties.

January 21, 1998 – Found Cast Iron Monument and established NAD 1983 (1996 Adjustment) Anoka County Project Coordinates by Static GPS methods. Updated ties.

July 2010 – Found Cast Iron Monument flush with the surface and updated ties.

July 2, 2012 – Set construction ties and removed Cast Iron Monument prior to road construction. Verified location of corner by VRS GPS methods.

September 17, 2012 – Set Cast Iron Monument flush with surface after road construction using construction ties. Updated ties.

January 19, 2017 – Found Cast Iron Monument flush with the surface and updated ties. Verified location of corner by VRS GPS methods.

May 28, 2021 – Found Cast Iron Monument flush with the surface and updated ties. Verified location of corner by VRS GPS methods.