

CERTIFICATE OF LOCATION OF GOVERNMENT CORNER

County of Anoka

State of Minnesota

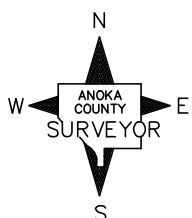
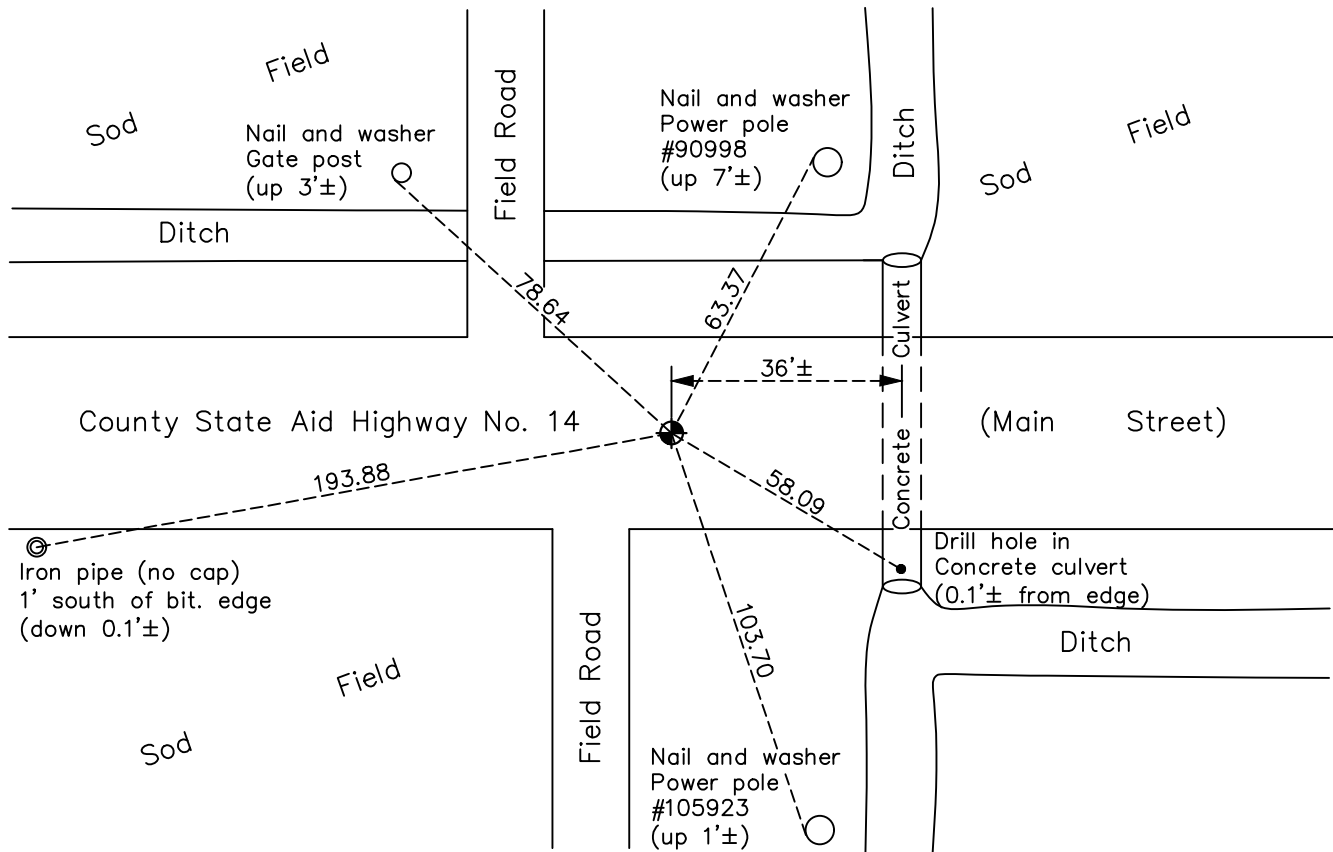
South 1/4 Corner of Sec. 6 Township 31 Range 22

On the 20th day of May, 1963, the described corner was evidenced by area resurvey

and to perpetuate the location of said corner, at the exact location thereof, a permanent marker was placed consisting of a cast iron monument

AND on the 21st day of June, 2021, said permanent marker was found flush with the surface and the ties were updated. Monument is on centerline.

Updated reference ties are as shown below.



Revision Date
7/26/21

N.A.D. 1983 Coordinates
 (1996 Adjustment)

| County Project Coordinates | |
|----------------------------|-------------|
| Northing | 158834.1162 |
| Easting | 534593.8690 |
| Date | 1/21/98 |

I hereby certify that this United States public land survey monument record is correct and complete to the best of my knowledge and belief.

David M Zieglmeier Date 8/30/21

David M. Zieglmeier, Anoka County Surveyor
 Minnesota License Number 46179

HISTORY OF GOVERNMENT CORNER

County of Anoka

State of Minnesota

South 1/4 Corner of Sec. 6 Township 31 Range 22

CORNER HISTORY:

May 20, 1963 – Set Cast Iron Monument flush with the surface with P.K. nails 2.00 north and east using area resurvey. Established ties to monument.

August 12, 1969 – Found Cast Iron Monument and updated ties.

June 15, 1973 – Found Cast Iron Monument and updated ties.

August 18, 1976 – Found Cast Iron Monument and updated ties.

August 5, 1980 – Found Cast Iron Monument and updated ties.

July 11, 1986 – Found Cast Iron Monument and updated ties.

June 28, 1991 – Found Cast Iron Monument and updated ties.

June 27, 1994 – Found Cast Iron Monument and set construction ties prior to road construction.

July 21, 1995 – Reset Cast Iron Monument after road construction and updated ties.

June 17, 1996 – Found Cast Iron Monument and updated ties.

January 21, 1998 – Found Cast Iron Monument and established NAD 1983 (1996 Adjustment) Anoka County Project Coordinates by Static GPS methods. Updated ties.

July 2010 – Found Cast Iron Monument flush with the surface and updated ties.

January 19, 2017 – Found Cast Iron Monument flush with the surface and verified location of corner by VRS GPS methods. Updated ties.

June 14, 2021 – Reset Cast Iron Monument after road construction and updated ties.

June 21, 2021 – Found Cast Iron Monument flush with the surface and verified location of corner by VRS GPS methods. Updated ties.