

# CERTIFICATE OF LOCATION OF GOVERNMENT CORNER

County of Anoka

State of Minnesota

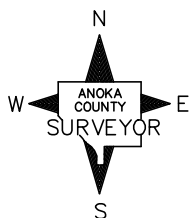
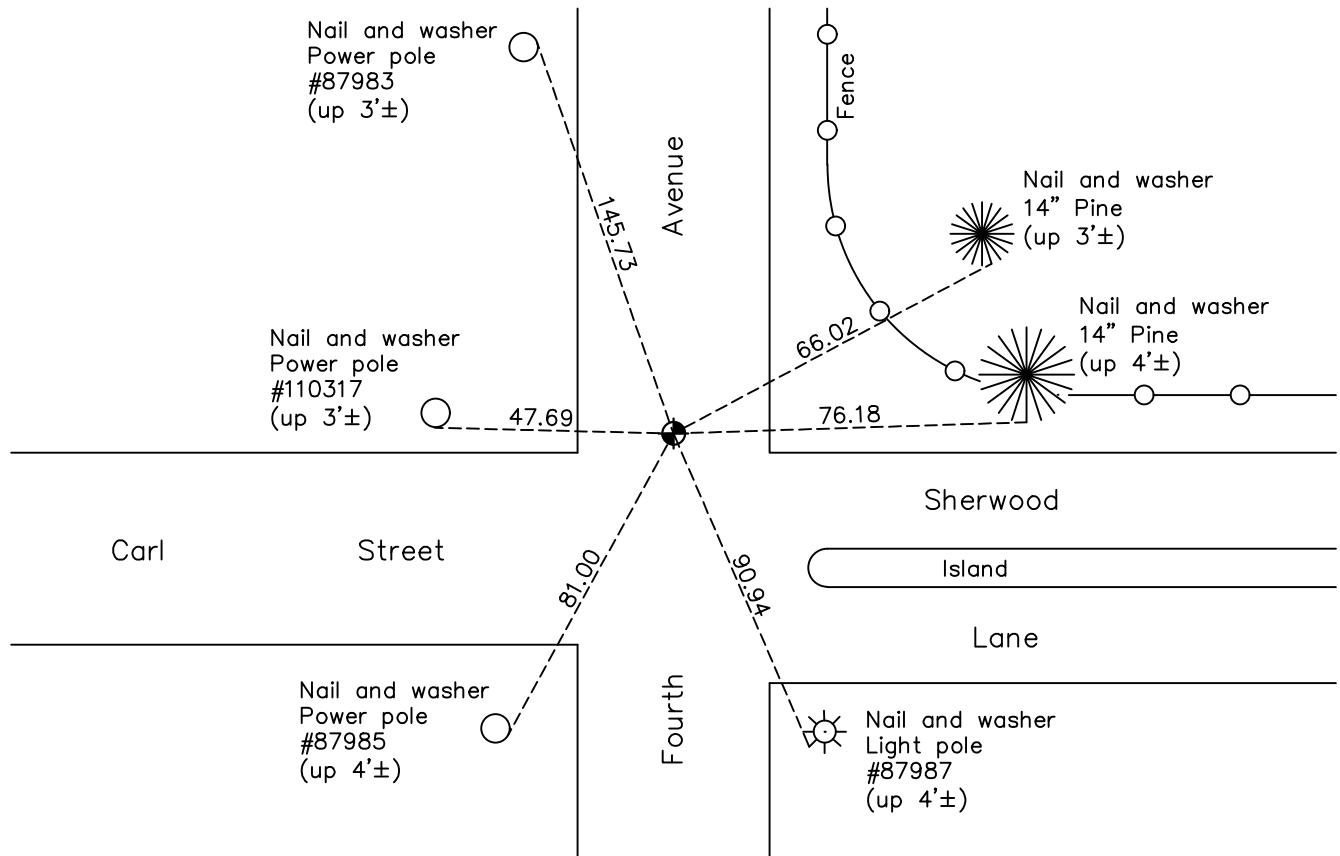
## West 1/4 Corner of Sec. 8 Township 31 Range 22

On the 20th day of May, 1963, the described corner was evidenced by area resurvey

and to perpetuate the location of said corner, at the exact location thereof, a permanent marker was placed consisting of a cast iron monument

AND on the 23rd day of April, 2021, said permanent marker was found down 0.2'± and the ties were updated

Updated reference ties are as shown below.



N.A.D. 1983 Coordinates  
(1996 Adjustment)

County Project Coordinates	
Northing	<u>156273.9486</u>
Easting	<u>537186.7792</u>
Date	<u>1/21/98</u>

Revision Date  
7/26/21

I hereby certify that this United States public land survey monument record is correct and complete to the best of my knowledge and belief.  
*David M Zieglsmeier* Date 8/30/21  
David M. Zieglsmeier, Anoka County Surveyor  
 Minnesota License Number 46179

# HISTORY OF GOVERNMENT CORNER

County of Anoka

State of Minnesota

## West 1/4 Corner of Sec. 8 Township 31 Range 22

### **CORNER HISTORY:**

May 20, 1963 – Set Cast Iron Monument down  $0.5' \pm$  using area resurvey. Established ties to monument.

May 13, 1964 – Updated ties and removed Cast Iron Monument prior to road construction.

June 14, 1965 – Reset Cast Iron Monument down  $0.3' \pm$  after road construction and updated ties.

August 18, 1969 – Found Cast Iron Monument down  $0.3' \pm$  and updated ties.

June 19, 1973 – Found Cast Iron Monument and updated ties.

May 16, 1977– Found Cast Iron Monument and updated ties.

August 6, 1980 – Found Cast Iron Monument and updated ties.

October 10, 1986 – Found Cast Iron Monument flush with the surface and updated ties.

September 16, 1987 – Found Cast Iron Monument and updated ties.

August 29, 1991 – Found Cast Iron Monument and updated ties.

June 12, 1996 – Found Cast Iron Monument and updated ties.

January 21, 1998– Found Cast Iron Monument and established NAD 1983 (1996 Adjustment) Anoka County Project Coordinates by Static GPS methods. Updated ties.

June 17, 2010 – Found Cast Iron Monument and updated ties.

October 27, 2016 – Found Cast Iron Monument under bituminous.

January 10, 2017 – Found Cast Iron Monument and verified location of corner by VRS GPS methods. Updated ties.

April 23, 2021 – Found Cast Iron Monument down  $0.2' \pm$  verified location of corner by VRS GPS methods. Updated ties.