

CERTIFICATE OF LOCATION OF GOVERNMENT CORNER

County of Anoka

State of Minnesota

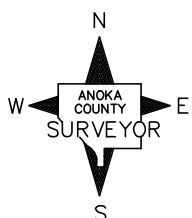
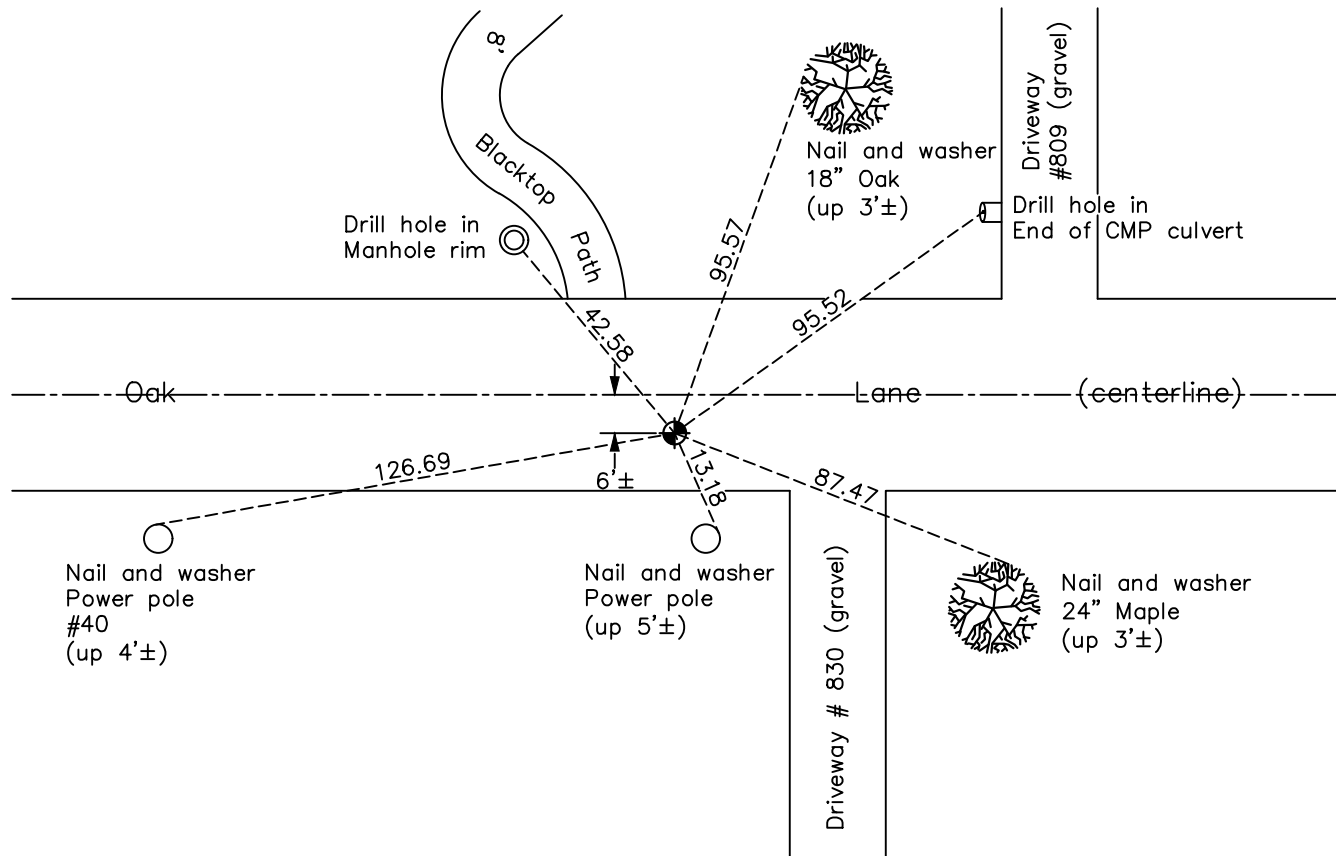
East 1/4 Corner of Sec. 8 Township 31 Range 22

On the 15th day of March, 1962, the described corner was evidenced by a 1-1/2" iron pipe

and to perpetuate the location of said corner, at the exact location thereof, a permanent marker was placed consisting of a cast iron monument

AND on the 28th day of May, 2021, said permanent marker was found and the ties were updated

Updated reference ties are as shown below.



Revision Date
7/26/21

N.A.D. 1983 Coordinates
 (1996 Adjustment)

County Project Coordinates	
Northing	<u>156222.3391</u>
Easting	<u>542443.7135</u>
Date	<u>2/13/98</u>

I hereby certify that this United States public land survey monument record is correct and complete to the best of my knowledge and belief.

David M Zieglmeier Date 8/30/21

David M. Zieglmeier, Anoka County Surveyor
 Minnesota License Number 46179

HISTORY OF GOVERNMENT CORNER

Page No. 37

County of Anoka

State of Minnesota

East 1/4 Corner of Sec. 8 Township 31 Range 22

CORNER HISTORY:

June 8, 1949 – Jackson found 1.5” Iron Pipe. Established ties to monument.

March 15, 1962 – Replaced bent 1.5” Iron Pipe with Cast Iron Monument down 0.5'± and updated ties.

July 9, 1965 – Found Cast Iron Monument and updated ties.

June 26, 1967 – Replaced Cast Iron Monument down 0.6'± and updated ties.

August 18, 1969 – Found Cast Iron Monument down 0.6'± and 6'± south of centerline. Updated ties.

June 19, 1973 – Found Cast Iron Monument and updated ties.

September, 1977 – Found Cast Iron Monument 6'± south of centerline of Oak Lane and updated ties.

August 7, 1980 – Found Cast Iron Monument and updated ties.

December 24, 1990 – Found Cast Iron Monument 6'± south of centerline and updated ties.

May 26, 1992 – Raised Cast Iron Monument and updated ties.

June 25, 1996 – Found Cast Iron Monument and updated ties.

February 13, 1998 – Found Cast Iron Monument and established NAD 1983 (1996 Adjustment) Anoka County Project Coordinates by Static GPS methods. Updated ties.

June 16, 2010 – Found Cast Iron Monument and updated ties.

September 22, 2016 – Found Cast Iron Monument and updated ties. Verified location of corner by VRS GPS methods.

May 28, 2021 – Found Cast Iron Monument and updated ties. Verified location of corner by VRS GPS methods.