

CERTIFICATE OF LOCATION OF GOVERNMENT CORNER

County of Anoka

State of Minnesota

Center Corner of Sec. 9 Township 31 Range 22

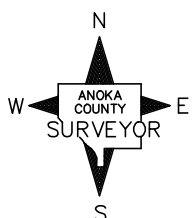
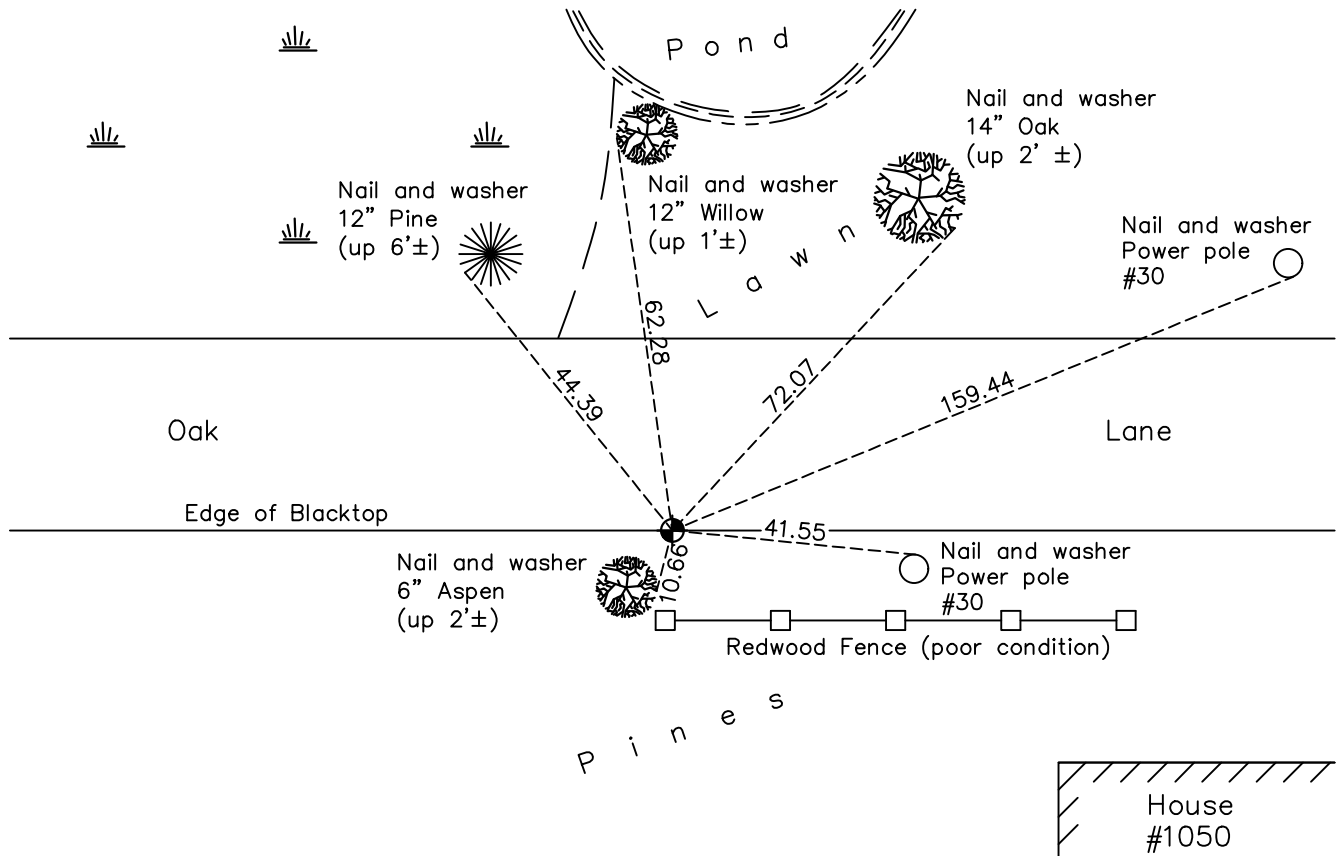
On the 26th day of June, 1967, the described corner was evidenced by area resurvey

and to perpetuate the location of said corner, at the exact location thereof, a permanent marker was placed consisting of a cast iron monument at the south edge of blacktop

(For Reference Only)

AND on the 28th day of May, 2021, said permanent marker was found down 1.2'± and the ties were updated

Updated reference ties are as shown below.



Revision Date
7/26/21

N.A.D. 1983 Coordinates
 (1996 Adjustment)

County Project Coordinates	
Northing	<u>156208.4569</u>
Easting	<u>545088.6898</u>
Date	<u>2/18/98</u>

I hereby certify that this United States public land survey monument record is correct and complete to the best of my knowledge and belief.

David M. Zieglmeier Date 8/30/21

David M. Zieglmeier, Anoka County Surveyor
 Minnesota License Number 46179

HISTORY OF GOVERNMENT CORNER

County of Anoka

State of Minnesota

Center Corner of Sec. 9 Township 31 Range 22

CORNER HISTORY:

June 26, 1967 - Set cast iron monument down 0.6'± using area resurvey. Established ties to monument.

August 18, 1969 - Found cast iron monument down 1.0'± and updated ties.

June 20, 1973 - Found cast iron monument and updated ties.

May 17, 1977 - Found cast iron monument and updated ties.

August 7, 1980 - Found cast iron monument and updated ties.

July 17, 1986 - Found cast iron monument and updated ties.

October 23, 1991 - Found cast iron monument and updated ties.

February 18, 1998 - Found cast iron monument and updated ties. Established NAD 1983 (1996 adj.) Anoka County project coordinates by static GPS methods.

June 16, 2010 - Found cast iron monument down 1.2'± and updated ties.

April 5, 2021 - Found cast iron monument down 1.2'± and checked position by static GPS methods.

May 28, 2021 - Found cast iron monument down 1.2'± and updated ties.