

CERTIFICATE OF LOCATION OF GOVERNMENT CORNER

County of Anoka

State of Minnesota

Witness Corner of Sec. 11 Township 31 Range 22

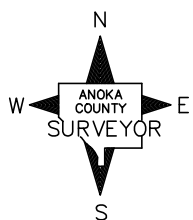
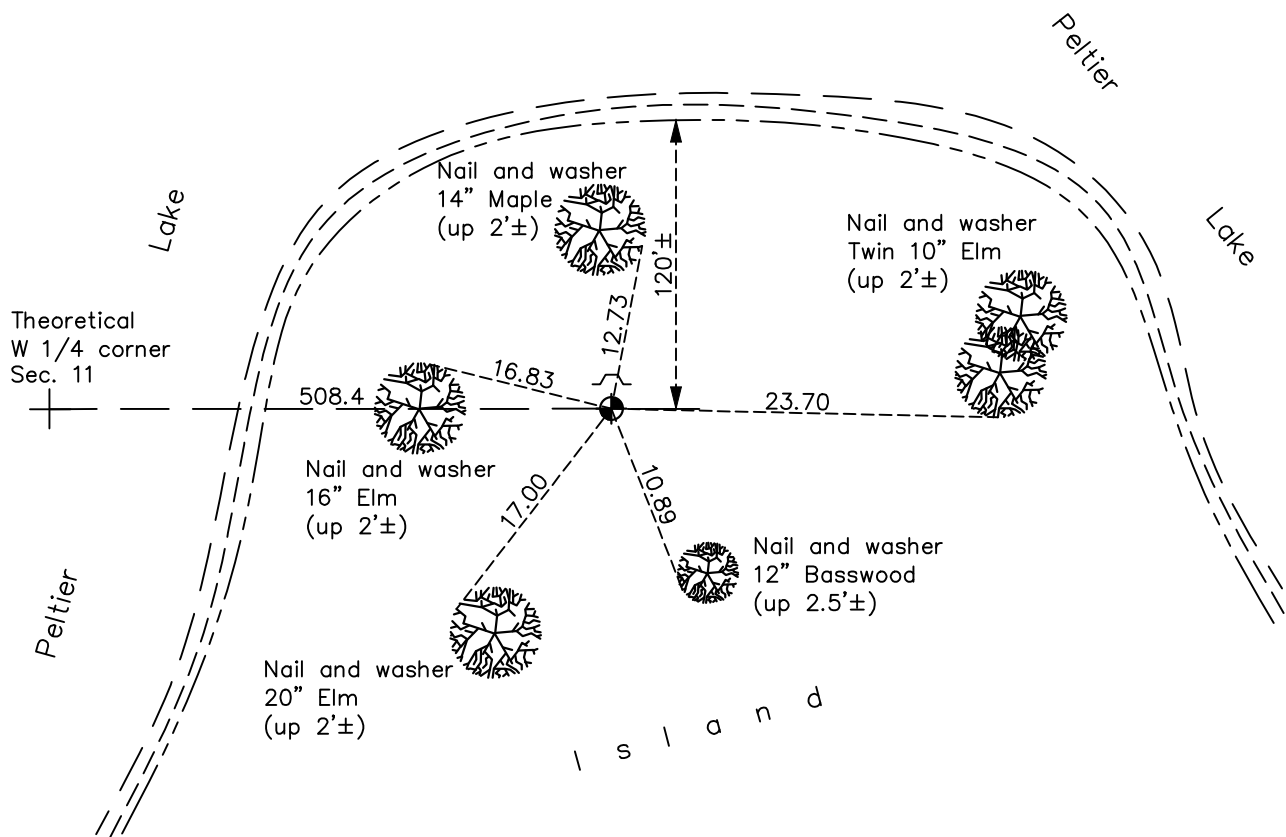
(Witness corner to W 1/4—on east—west 1/4 line)

On the 5th day of January, 1976, the described corner was evidenced by area resurvey

and to perpetuate the location of said corner, at the exact location thereof, a permanent marker was placed consisting of a cast iron monument with a sign and post on the north side

AND on the 30th day of December, 2022, said permanent marker was found up 0.2'± and the ties were updated

Updated reference ties are as shown below.



Revision Date
 01/03/2023

N.A.D. 1983 Coordinates
 (1996 Adjustment)

County Project Coordinates	
Northing	156217.7946
Easting	553495.0448
Date	3/28/06

I hereby certify that this United States public land survey monument record is correct and complete to the best of my knowledge and belief.

David Zieglmeier Date 6/28/23

David M. Zieglmeier, Anoka County Surveyor
 Minnesota License Number 46179

HISTORY OF GOVERNMENT CORNER

County of Anoka

State of Minnesota

Witness Corner of Sec. 11 Township 31 Range 22
(Witness corner to W 1/4—on east—west 1/4 line)

CORNER HISTORY:

January 5, 1976 – Set Cast Iron Monument using area resurvey with a sign and post on the north side. Established ties to monument.

January 6, 1978 – Found Cast Iron Monument and updated ties.

March 28, 2006 – Found Cast Iron Monument and established NAD 1983 (1996 Adjustment) Anoka County Project Coordinates by Static GPS methods.

January 12, 2011 – Found Cast Iron Monument flush with the surface and updated ties.

February 6, 2017 – Found Cast Iron Monument up 0.2'± with a sign and post on the north side of monument. Updated ties.

December 30, 2022 – Found Cast Iron Monument up 0.2'±, verified position by RTK GPS Method and updated the ties.