

CERTIFICATE OF LOCATION OF GOVERNMENT CORNER

County of Anoka

State of Minnesota

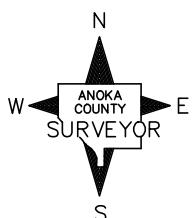
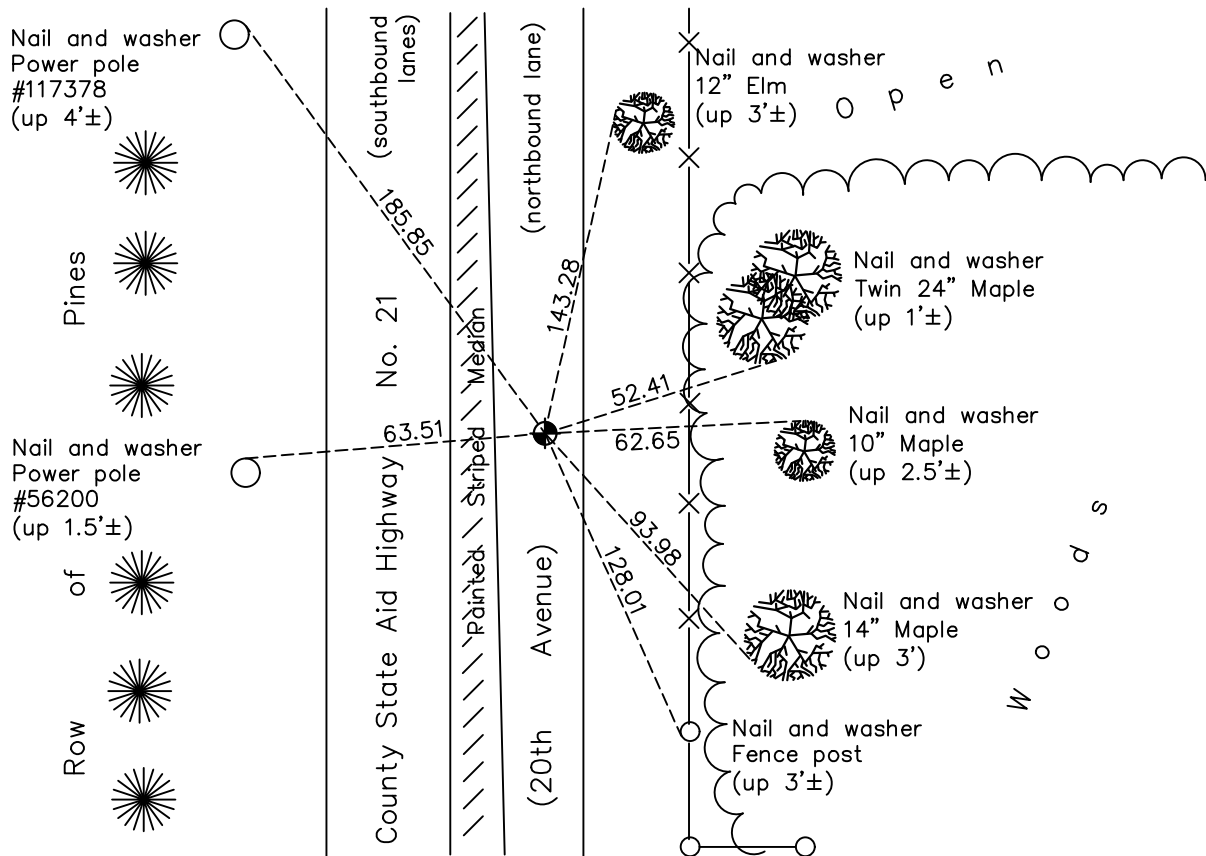
West 1/4 Corner of Sec. 12 Township 31 Range 22

On the 14th day of August, 1974, the described corner was evidenced by a 1/2" iron pipe set by Don Hult

and to perpetuate the location of said corner, at the exact location thereof, a permanent marker was placed consisting of a cast iron monument located 14'± east of centerline

AND on the 11th day of May, 2021, said permanent marker was found flush with the surface and the ties were updated.

Updated reference ties are as shown below.



Revision Date
7/26/21

N.A.D. 1983 Coordinates
(1996 Adjustment)

County Project Coordinates	
Northing	156209.0692
Easting	558241.6954
Date	7/21/98

I hereby certify that this United States public land survey monument record is correct and complete to the best of my knowledge and belief.

David M. Zieglermeier Date 8/30/21

David M. Zieglermeier, Anoka County Surveyor
Minnesota License Number 46179

HISTORY OF GOVERNMENT CORNER

Page No. 41

County of Anoka

State of Minnesota

West 1/4 Corner of Sec. 12 Township 31 Range 22

CORNER HISTORY:

August 14, 1974 – Found 1/2 " Iron Pipe set by D. Hult. Established ties to monument.

July 9, 1975 – Replaced Iron Pipe with a Cast Iron Monument flush with the surface. Set P.K. nails 2.00' north and east of monument and updated ties.

May 17, 1977 – Found Cast Iron Monument and updated ties.

August 30, 1991 – Found Cast Iron Monument 14'± east of centerline and updated ties.

June 18, 1996 – Found Cast Iron Monument and updated ties.

July 21, 1998 – Found Cast Iron Monument and established NAD 1983 (1996 Adjustment) Anoka County Project Coordinates by Static GPS methods. Updated ties.

July 20, 2010 – Found Cast Iron Monument with no top and updated ties. Monument will be lowered and top added at a later date.

September 26, 2016 – Found Cast Iron Monument flush with the surface and updated ties. Verified location of corner by VRS GPS methods.

May 11, 2021 – Found Cast Iron Monument flush with the surface and updated ties. Verified location of corner by VRS GPS methods.