

CERTIFICATE OF LOCATION OF GOVERNMENT CORNER

County of Anoka

State of Minnesota

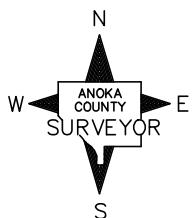
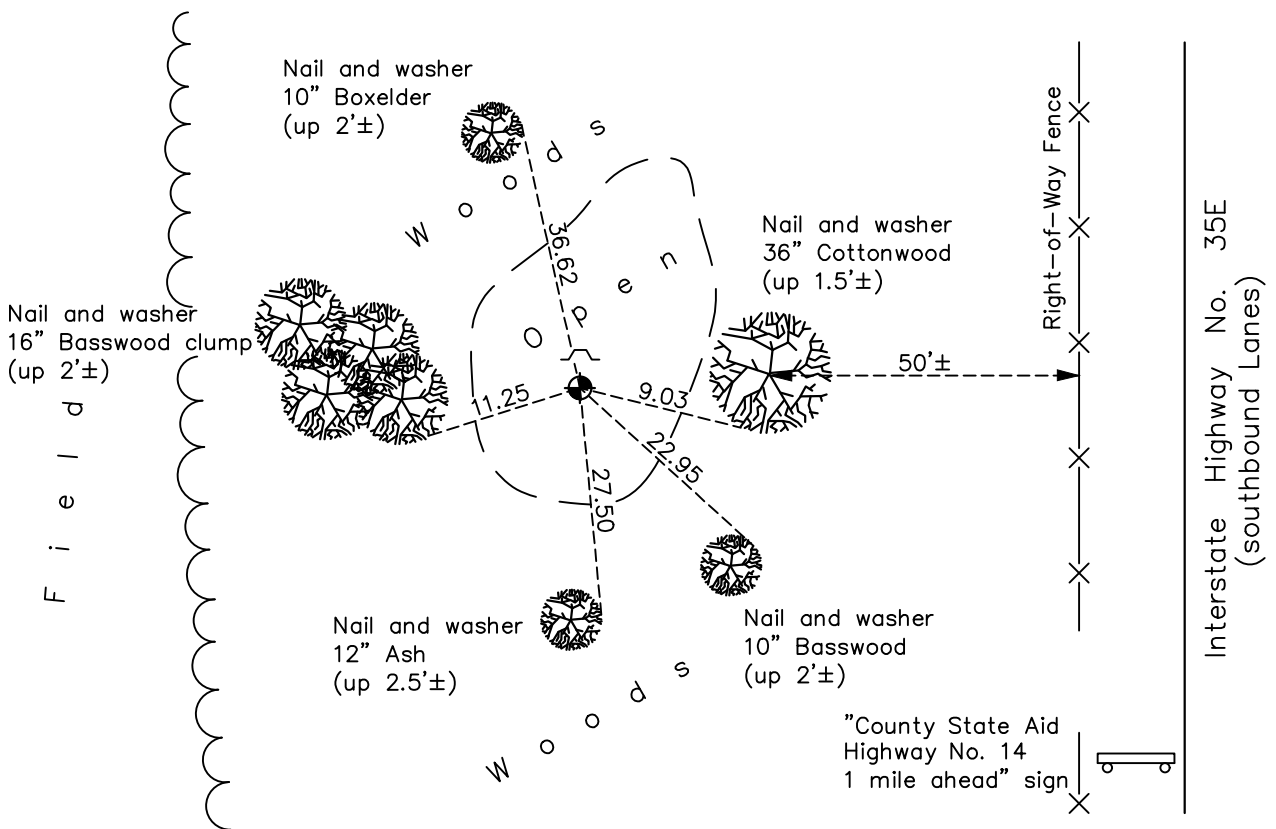
South 1/4 Corner of Sec. 12 Township 31 Range 22

On the 9th day of September, 1974, the described corner was evidenced by a 1/2" iron pipe set by Don Hult

and to perpetuate the location of said corner, at the exact location thereof, a permanent marker was placed consisting of a cast iron monument with a sign and post on the north side

AND on the 3rd day of June, 2021, said permanent marker was found flush with the surface and the ties were updated

Updated reference ties are as shown below.



Revision Date
7/26/21

N.A.D. 1983 Coordinates
 (1996 Adjustment)

County Project Coordinates	
Northing	<u>153595.6369</u>
Easting	<u>560881.7238</u>
Date	<u>2/25/98</u>

I hereby certify that this United States public land survey monument record is correct and complete to the best of my knowledge and belief.
David M Zieglermeier Date 8/30/21
David M. Zieglermeier, Anoka County Surveyor
 Minnesota License Number 46179

HISTORY OF GOVERNMENT CORNER

County of Anoka

State of Minnesota

South 1/4 Corner of Sec. 12 Township 31 Range 22

CORNER HISTORY:

September 9, 1974 – Found 1/2” Iron Pipe set by Don Hult. Established ties to monument.

September 23, 1975 – Replaced Iron Pipe with Cast Iron Monument and a sign and post on the the north side. Updated ties.

May 17, 1977 – Found Cast Iron Monument and updated ties.

July 28, 1980 – Found Cast Iron Monument and updated ties.

July 21, 1986 – Found Cast Iron Monument and updated ties.

October 23, 1991 – Found Cast Iron Monument with a sign and post on the north side. Updated ties.

July 15, 1996 – Found Cast Iron Monument and updated ties.

February 25, 1998 – Found Cast Iron Monument with a sign and post on the north side and established NAD 1983 (1996 Adjustment) Anoka County Project Coordinates by Static GPS methods. Updated ties.

August 31, 2010 – Found Cast Iron Monument flush with the surface and updated ties.

January 23, 2017 – Found Cast Iron Monument flush with the surface and updated ties.

June 3, 2021 – Found Cast Iron Monument flush with the surface and updated ties.