

CERTIFICATE OF LOCATION OF GOVERNMENT CORNER

County of Anoka

State of Minnesota

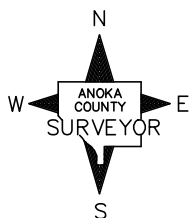
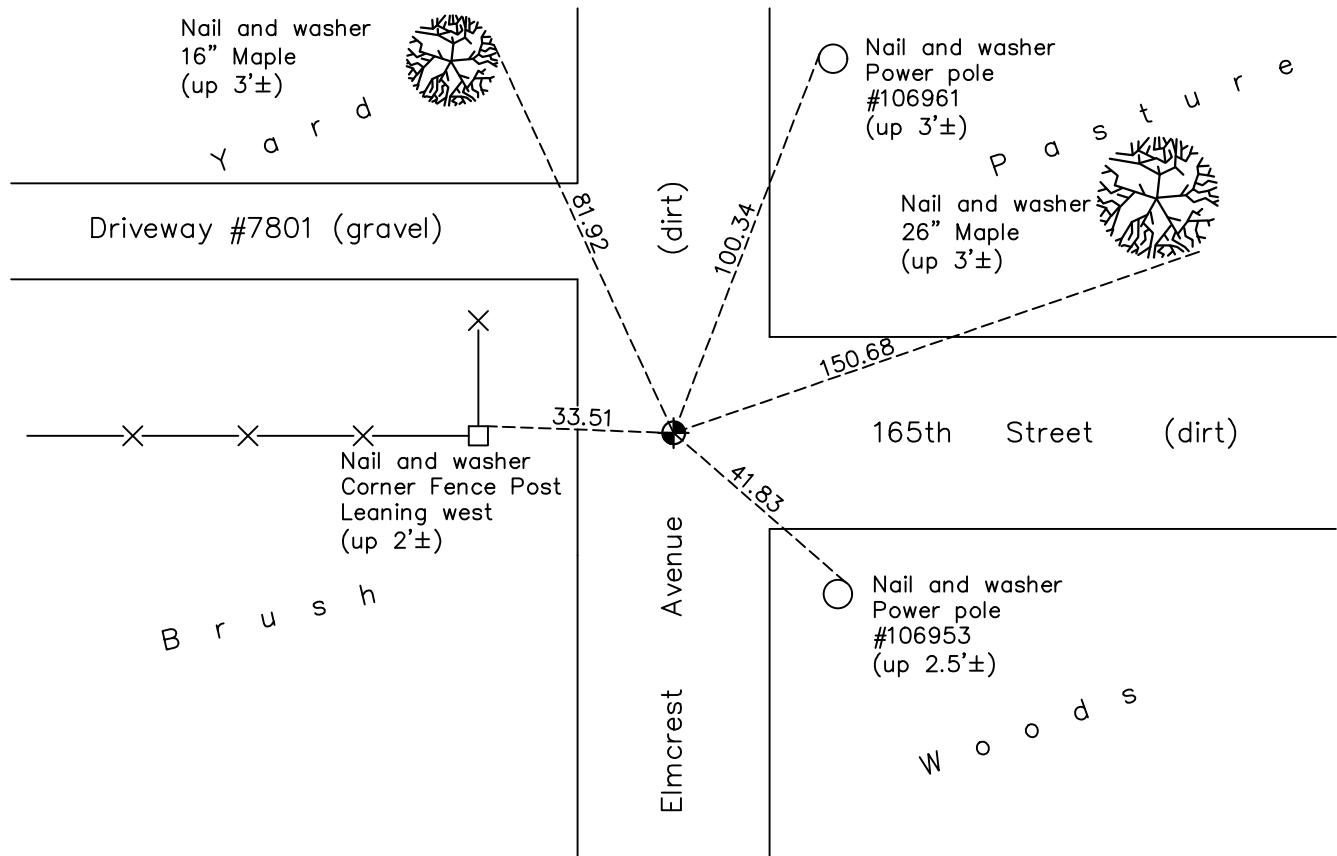
East 1/4 Corner of Sec. 12 Township 31 Range 22

On the 9th day of April, 1974, the described corner was evidenced by a Washington County cast iron monument

and to perpetuate the location of said corner, at the exact location thereof, a permanent marker was placed consisting of a cast iron monument

AND on the 21st day of April, 2021, said permanent marker was found down 1.7'± and the ties were updated

Updated reference ties are as shown below.



Revision Date
7/26/21

N.A.D. 1983 Coordinates
 (1996 Adjustment)

County Project Coordinates	
Northing	<u>156244.0619</u>
Easting	<u>563593.2814</u>
Date	<u>2/25/98</u>

I hereby certify that this United States public land survey monument record is correct and complete to the best of my knowledge and belief.
David M Zieglsmeier Date 8/30/21
David M. Zieglsmeier, Anoka County Surveyor
 Minnesota License Number 46179

HISTORY OF GOVERNMENT CORNER

County of Anoka

State of Minnesota

East 1/4 Corner of Sec. 12 Township 31 Range 22

CORNER HISTORY:

April 9, 1974 – Found Washington County Cast Iron Monument down $.4'\pm$.
Established ties to monument.

May 17, 1977 – Found Cast Iron Monument and updated ties.

October 17, 1991 – Found Cast Iron Monument and updated ties.

June 28, 1996 – Found Cast Iron Monument and updated ties.

February 25, 1998 – Found Cast Iron Monument and established NAD 1983 (1996 Adjustment) Anoka County Project Coordinates by Static GPS methods. Updated ties.

July 22, 2010 – Found Cast Iron Monument down $1.5'\pm$ and updated ties.

September 26, 2016 – Found Cast Iron Monument down $1.7'\pm$. Verified location of corner by VRS GPS methods. Updated ties.

April 21, 2021 – Found Cast Iron Monument down $1.7'\pm$. Verified location of corner by VRS GPS methods. Updated ties.