

CERTIFICATE OF LOCATION OF GOVERNMENT CORNER

County of Anoka

State of Minnesota

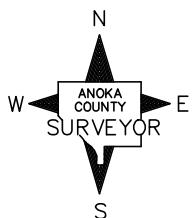
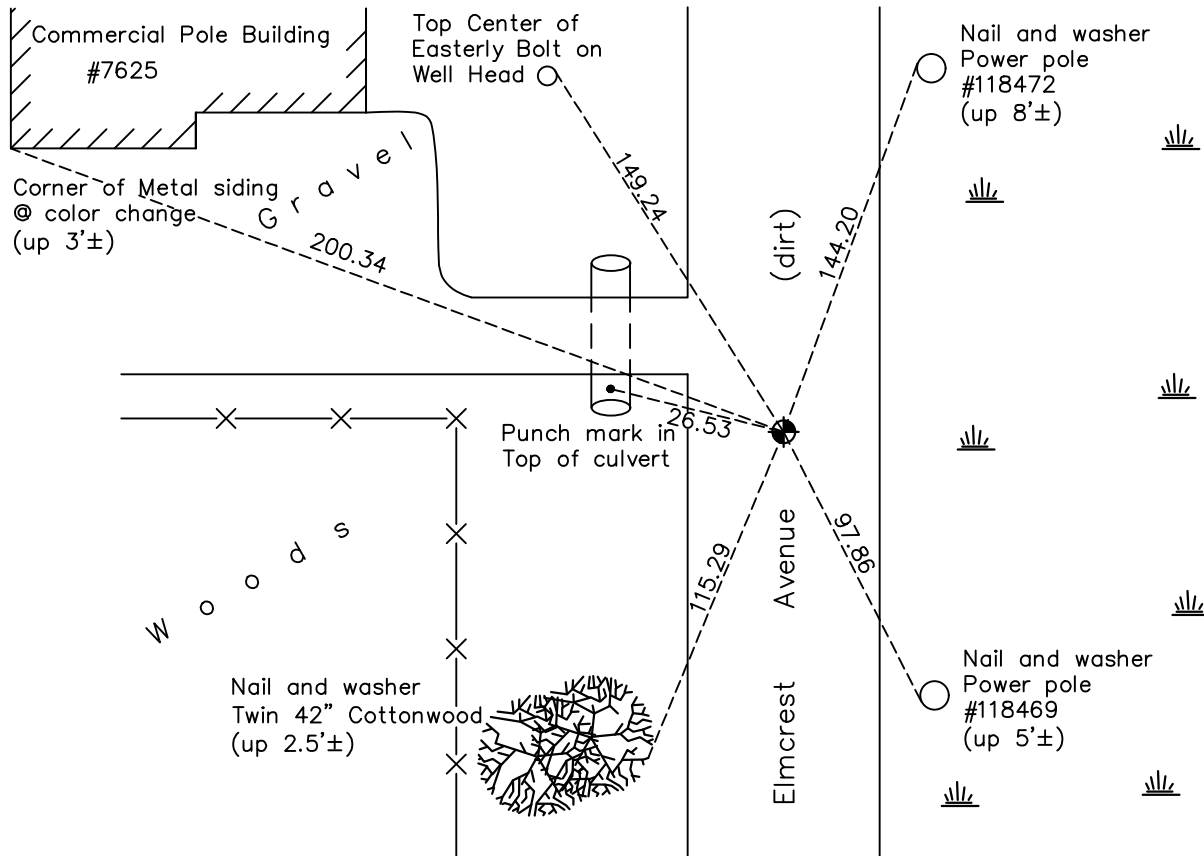
Southeast Corner of Sec. 12 Township 31 Range 22

On the 10th day of April, 1974, the described corner was evidenced by a Washington County cast iron monument

and to perpetuate the location of said corner, at the exact location thereof, a permanent marker was placed consisting of a cast iron monument

AND on the 21st day of April, 2021, said permanent marker was found down 1.3'± and the ties were updated

Updated reference ties are as shown below.



N.A.D. 1983 Coordinates
(1996 Adjustment)

County Project Coordinates

Northing 153621.8068

Easting 563578.6212

Date 2/25/98

Revision Date

7/27/21

I hereby certify that this United States public land survey monument record is correct and complete to the best of my knowledge and belief.

David M Zieglmeier Date 8/30/21

David M. Zieglmeier, Anoka County Surveyor

Minnesota License Number 46179

HISTORY OF GOVERNMENT CORNER

Page No. 43

County of Anoka

State of Minnesota

Southeast Corner of Sec. 12 Township 31 Range 22

CORNER HISTORY:

April 10, 1974 – Found Washington County Cast Iron Monument down 0.2'±.
Established ties to monument.

May 17, 1977 – Found Cast Iron Monument and updated ties.

July 25, 1980 – Found Cast Iron Monument and updated ties.

July 7, 1986 – Found Cast Iron Monument and updated ties.

July 1, 1996 – Found Cast Iron Monument and updated ties.

February 25, 1998 – Found Cast Iron Monument and established NAD 1983 (1996 Adjustment) Anoka County Project Coordinates by Static GPS methods. Updated ties.

July 22, 2010 – Found Cast Iron Monument down 1.3'± and updated ties.

September 26, 2016 – Found Cast Iron Monument down 1.3'±. Verified location of corner by VRS GPS methods. Updated ties.

April 21, 2021 – Found Cast Iron Monument down 1.3'±. Verified location of corner by VRS GPS methods. Updated ties.