

CERTIFICATE OF LOCATION OF GOVERNMENT CORNER

County of Anoka

State of Minnesota

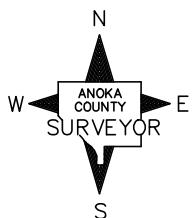
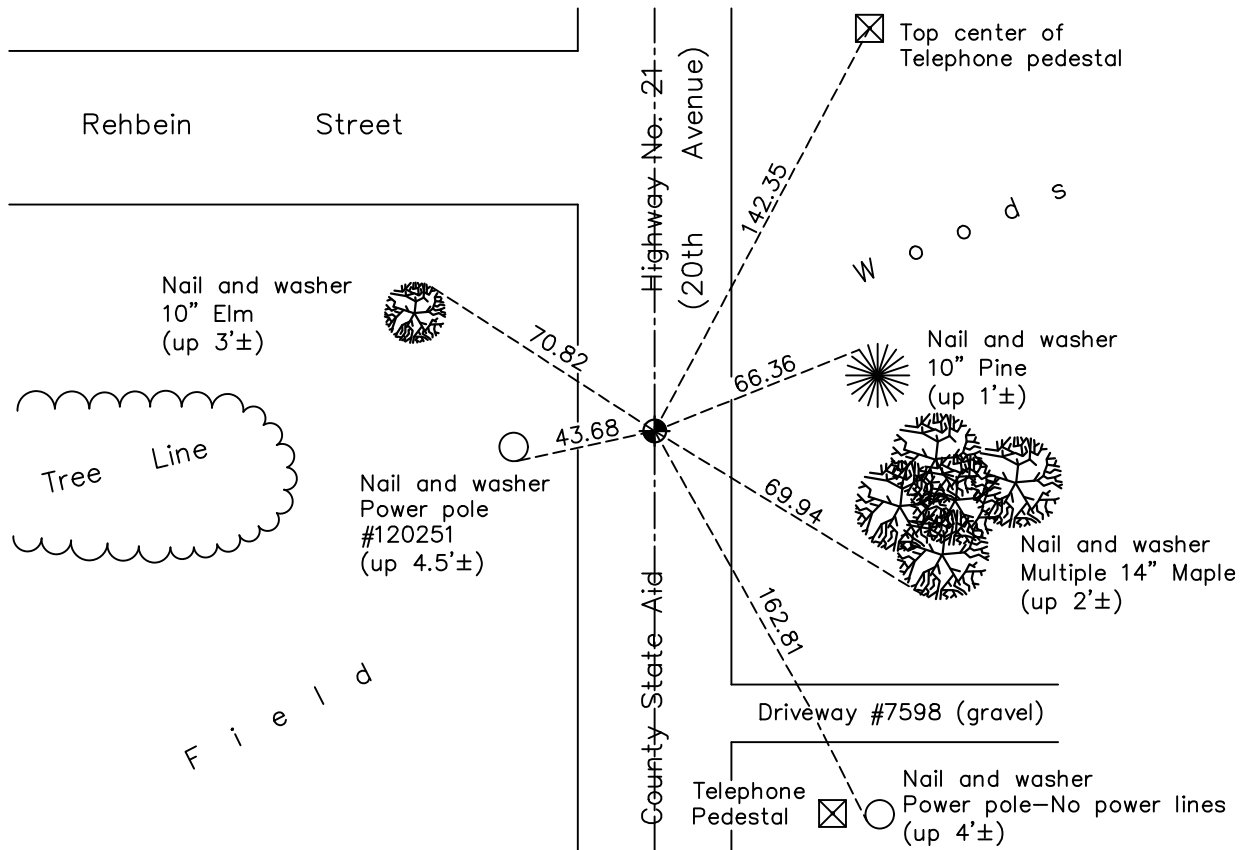
Northeast Corner of Sec. 14 Township 31 Range 22

On the 23rd day of March, 1962, the described corner was evidenced by a concrete monument

and to perpetuate the location of said corner, at the exact location thereof, a permanent marker was placed consisting of a cast iron monument

AND on the 11th day of May, 2021, said permanent marker was found on centerline the ties were updated

Updated reference ties are as shown below.



Revision Date
7/27/21

N.A.D. 1983 Coordinates
 (1996 Adjustment)

County Project Coordinates	
Northing	<u>153578.4844</u>
Easting	<u>558216.8146</u>
Date	<u>7/20/98</u>

I hereby certify that this United States public land survey monument record is correct and complete to the best of my knowledge and belief.
David M Zieglermeier Date 8/30/21
David M. Zieglermeier, Anoka County Surveyor
 Minnesota License Number 46179

HISTORY OF GOVERNMENT CORNER

Page No. 45

County of Anoka

State of Minnesota

Northeast Corner of Sec. 14 Township 31 Range 22

CORNER HISTORY:

October 9, 1945 – Cartwright found Concrete Monument down 6". Established ties to monument.

March 23, 1962 – Found Concrete Monument down 0.5'±. Set 3/4" Iron Pipe on North Side of monument. Updated ties.

June 22, 1965 – Found Concrete Monument and updated ties.

August 4, 1969 – Set Cast Iron Monument flush with the surface on top of broken concrete monument. Set P.K. nails 2.00' South and West. Updated ties.

July 9, 1970 – Updated ties and removed Cast Iron Monument prior to road construction.

September 13, 1972 – Found P.K. nail and updated ties.

June 18, 1973 – Found unknown type of monument, date monument was reset after construction is unknown, and updated ties.

August 18, 1976 – Found unknown type of monument and updated ties.

August 30, 1991 – Found Cast Iron Monument and updated ties.

June 18, 1996 – Found Cast Iron Monument and updated ties.

February 3, 1998 – Found Cast Iron Monument and updated ties.

June 8, 1998 – Set construction ties and removed cast iron monument prior to road construction. Updated ties.

July 20, 1998 – Replaced Cast Iron Monument and established NAD 1983 (1996 Adjustment) Anoka County Project Coordinates by Static GPS methods. Updated ties.

July 20, 2010 – Found Cast Iron Monument up 0.05'± and updated ties.

October 10, 2016 – Found Cast Iron Monument on centerline and updated ties.

May 11, 2021 – Found Cast Iron Monument on centerline. Verified location of corner by VRS GPS methods. Updated ties.